

# ELECTRIC PRODUCTS



**Vulcan**  
RADIATOR

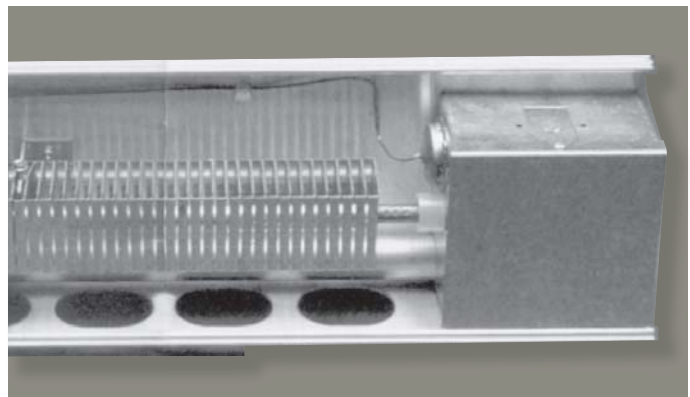
# ELECTRIC PRODUCTS

## MODEL SB STANDARD



SBF

SBT



### SB FEATURES

SBST - Bottom intake, slope discharge

SBSTF - Front intake, slope discharge

SBT - Bottom intake, top discharge

SBF - Front intake, top discharge

Two piece all aluminum, 14 gauge front and back.

Extended backs and fronts available.

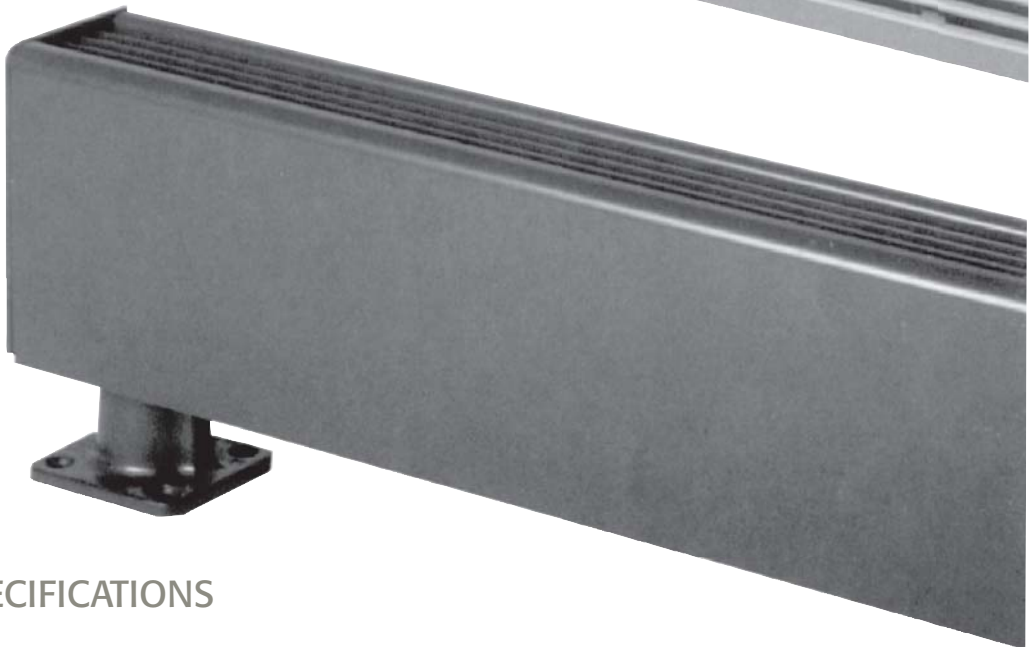
- 4" junction boxes at each end.
- 3/4" EMT raceway standard.
- 1/2" and 3/4" knockouts.
- Control packages available.
- Multiple heater sections on one common back.
- C/UL Listed.
- Full length thermal limit switch.
- There are 5 painted finishes available.

- Custom finishes specified by the architect are available.
  - Available with optional 2" pedestals and finished back.
  - 1/4" pencil proof discharge grill.
  - Accessories include: end caps, walltrims, splice plates, corners and blank sections.
  - Cabinet size is 3"W x 5"H. (3"W x 6"H SBST/F)
  - Available with built in thermostat or disconnect.
  - Wattages from 100 to 250 watts per foot.
- Control sections include 6" or 12" with:  
disconnect, thermostat, pneumatic relay, transformer relay,  
power relay, fused disconnect or duplex receptacle. Optional  
built-in controls shall include thermostats (single and double  
pole) and disconnect switches.

SBF-PD



SBT-PD



### SB ENGINEERING SPECIFICATIONS

Design Draft Barriers shall be 5" high and 3" wide. The front cover shall be one piece 14 gauge aluminum construction suitable for architectural, Commercial and industrial use, with 1/4" pencil proof top discharge.

The one piece cover shall be extruded aluminum for maximum strength and shall be available in lengths to 15'. The front cover shall snap fit to the 14 gauge back cover with no screw heads or assembly fasteners. The 14 gauge back cover shall be suitable for mullion to mullion mounting.

Standard painted finish shall be provided.

Heat sections from 2' through 10' shall be available. All heaters shall contain a 3/4" EMT built-in raceway with factory wiring 1/2" and 3/4" knockouts shall be provided on the side and rear of the heater junction box to allow end to end wiring. All blank sections shall be fully enclosed to allow branch circuit wiring. All heaters shall contain a full length linear thermal overheat protector with automatic reset. Wattages shall be available from 100 to 250 WPF.

Heating elements shall consist of a steel sheath and mechanically bonded aluminum fins to assure efficient heat transfer. Element fin temperature shall not exceed 350°F to ensure long element life. Element shall be center anchored and free floating at each end on nylon bushings.

Optional controls shall include:

Thermostats (single or double pole) and disconnect switches. Controls shall be tamper-proof and adjustable with a blade screwdriver through the discharge grill.

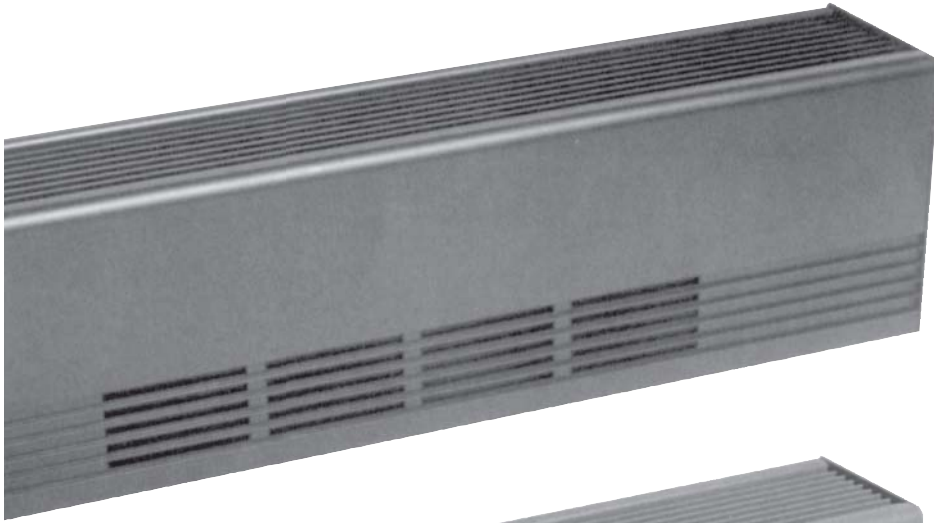
Optional control sections – see page 6.

Accessories – see page 6.

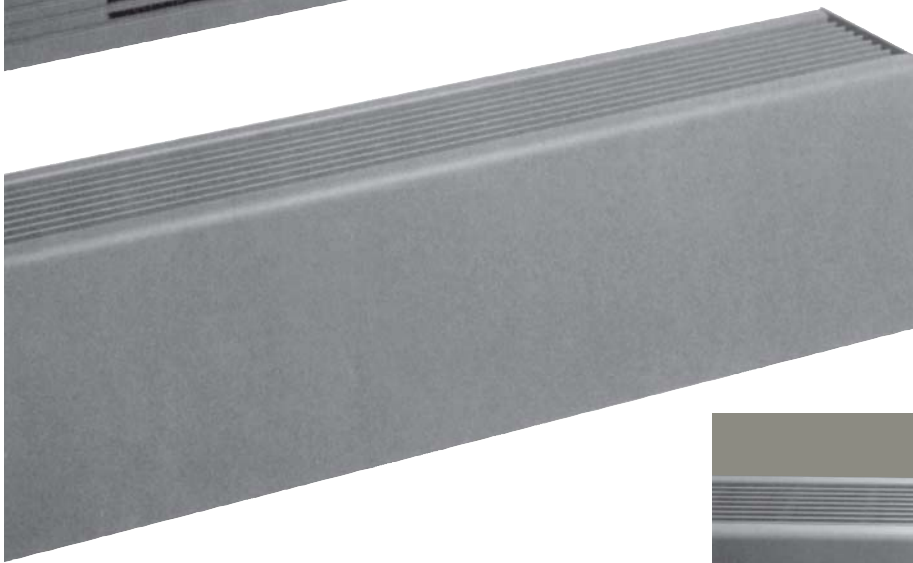
All heaters are labeled by Underwriters' Laboratories, Inc.

# ELECTRIC PRODUCTS

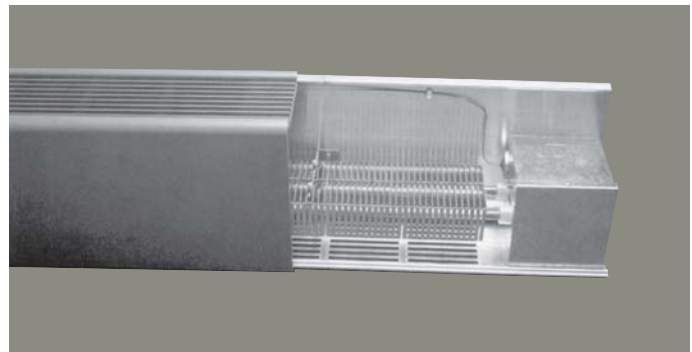
## MODEL LB STANDARD



LBF



LBT



### LB FEATURES

LBT - Bottom intake, top discharge

LBF - Front intake, top discharge

Two piece all aluminum, 12 gauge front and back.

- Extended backs and fronts available.
- 4" junction boxes at each end.
- 3/4" EMT raceway standard.
- 1/2" and 3/4" knockouts.
- Control packages available.
- Multiple heater sections on one common back.
- C/UL Listed.
- Full length thermal limit switch.
- There are 5 painted finishes available.
- Custom finishes specified by the architect are available.

- Available with optional 2" pedestals and finished back.
- 1/4" pencil proof discharge grill.
- Accessories include: end caps, walltrims, splice plates, corners and blank sections.
- Cabinet size is 5"W x 7"H.
- Available with built in thermostat or disconnect.
- Wattages from 100 to 500 watts per foot.  
Control sections include 6" or 12" with:  
disconnect, thermostat, pneumatic relay, transformer relay, relay, fused disconnect or duplex receptacle. Optional built-in controls shall include thermostats (single and double pole) and disconnect switches.

LBF-PD



LBT-PD



## LB ENGINEERING SPECIFICATIONS

Design Draft Barriers shall be 7" high and 5" wide. The front cover shall be one piece 12 gauge aluminum construction suitable for architectural, Commercial and industrial use, with 1/4" pencil proof top discharge.

The one piece cover shall be extruded aluminum for maximum strength and shall be available in lengths to 12'. The front cover shall snap fit to the 12 gauge back cover with no screw heads or assembly fasteners. The 12 gauge back cover shall be suitable for mullion to mullion mounting.

Standard painted finish shall be provided.

Heat sections from 2' through 10' shall be available. All heaters shall contain a 3/4" EMT built-in raceway with factory wiring 1/2" and 3/4" knockouts shall be provided on the side and rear of the heater junction box to allow end to end wiring. All blank sections shall be fully enclosed to allow branch circuit wiring. All heaters shall contain a full length linear thermal overheat protector with automatic reset. Wattages shall be available from 100 to 500 WPF.

Heating elements shall consist of a steel sheath and mechanically bonded aluminum fins to assure efficient heat transfer. Element fin temperature shall not exceed 350°F to ensure long element life. Element shall be center anchored and free floating at each end on nylon bushings.

Optional controls shall include:

Thermostats (single or double pole) and disconnect switches. Controls shall be tamper-proof and adjustable with a blade screwdriver through the discharge grill.

Optional control sections – see page 7.

Accessories – see page 7.

All heaters are labeled by Underwriters' Laboratories, Inc.

# SB ACCESSORIES

DUE TO THE SIZE OF THE CABINET, CONTROLS OTHER THAN THERMOSTATS AND DISCONNECTS MUST BE MOUNTED IN A CONTROL SECTION. SEE BELOW.

## CONTROL SECTIONS:

12" Control Sections:

12" long and can be attached to the enclosure. Contains 1, 2, or 3 items. right or left side mounting. (6" CS for 1 or 2 items).

## TRANSFORMER RELAY:

Single pole, rated 25 amp 120 - 277 volt. Contact rated up to 277 volt (specify). Coils are 24 to 277 volt (specify).

## POWER RELAY, CONTACTORS, PE RELAYS,

## MERCURY RELAY:

Single or double pole (specify). 20 amp rated 120 - 277 volt. Low or line volts coils (specify).

## DUPLEX RECEPTACLE:

Mounted on front cover. 15 amp rated 120 volt.

## FUSED DISCONNECT:

Fuse block with 20 amp fuse and disconnect switch.

## THERMOSTATS:

Single or double pole rated 25 amp 120 - 277 volt adjustable through discharge grill.

## DISCONNECT SWITCH:

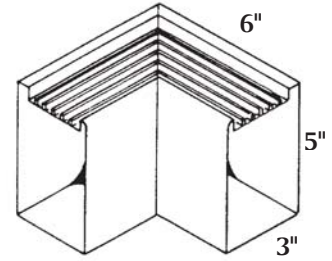
Double pole rated 20 amp 120 - 277 volt.

# ACCESSORIES

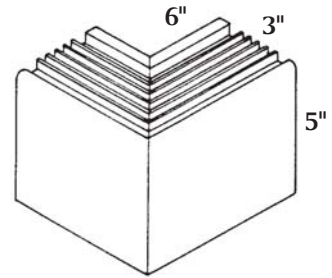
* CAT NO.	DESCRIPTION
SB-WT	Wall Trim (specify 4" or 6")
SB-SP	Splice Plate
SB-EC	End Cap (specify right or left)
SB-IC	Inside Corner (specify miter degree)
SB-OC	Outside Corner (specify miter degree)
SB-BS	Blank Section (specify length 6" - 15')
SBT	Bottom Intake, Top Discharge
SBF	Front Intake, Top Discharge

LENGTH	NOMINAL WATTS/FT.	HEAT WATTS	CAT NO.	VOLTS
2'	150	300	2150	
	200	400	2200	
	250	500	2250	
3'	100	300	3100	
	150	450	3150	
	200	600	3200	
4'	100	400	4100	
	150	600	4150	
	200	800	4200	
5'	100	500	5100	
	150	750	5150	
	200	1000	5200	
6'	100	600	6100	120 to 277
	150	900	6150	
	200	1200	6200	
7'	100	700	7100	
	150	1050	7150	
	200	1400	7200	
8'	100	800	8100	
	150	1200	8150	
	200	1600	8200	
9'	100	900	9100	
	150	1350	9150	
	200	1800	9200	
10'	100	1000	10100	
	150	1500	10150	
	200	2000	10200	
	250	2500	10250	

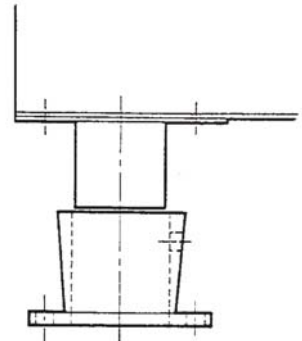
NOTE: Consult factory for 120 volt applications.



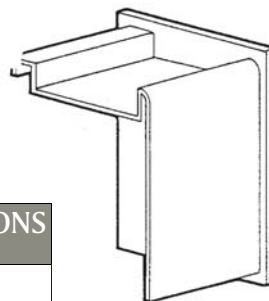
INSIDE CORNER



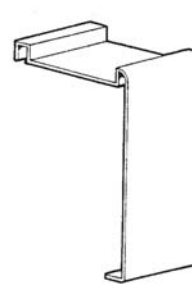
OUTSIDE CORNER



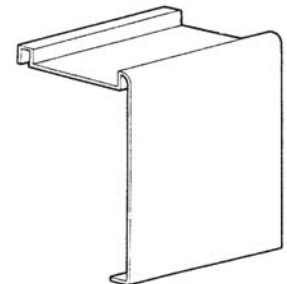
CAST PEDESTAL



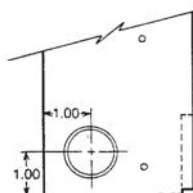
END CAP



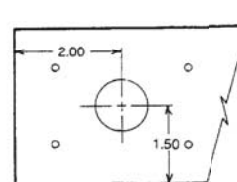
SPLICE PLATE



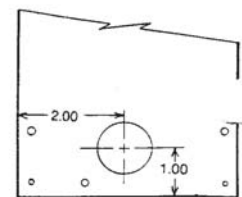
WALL TRIM



SIDE VIEW



BOTTOM VIEW  
Pedestal Unit Only



BACK VIEW

# ACCESSORIES

DESCRIPTION	SERIES SBT OR SBF CATALOG NUMBER	DIMENSIONS D/H/L	
BLANKS	SBT or SBF 100BS	3"x5"x1'	
	SBT or SBF 200BS	3"x5"x2'	
	SBT or SBF 300BS	3"x5"x3'	
	SBT or SBF 400BS	3"x5"x4'	
	SBT or SBF 500BS	3"x5"x5'	
	SBT or SBF 600BS	3"x5"x6'	
	SBT or SBF 700BS	3"x5"x7'	
	SBT or SBF 800BS	3"x5"x8'	
	SBT or SBF 900BS	3"x5"x9'	
	SBT or SBF 1000BS	3"x5"x10'	
	Wall Trim	SBT or SBF - WT	3"x5"x2"
	Splice Plate	SBT or SBF - SP	3"x5"x1-1/2"
	Inside Corner	SBT or SBF - IC	3"x5"x6"
Outside Corner	SBT or SBF - OC	3"x5"x6"	
End Caps	SBT or SBF - EC	3"x5"x1/8"	

NOTE: Use suffix SBST for Slope Models.

# LB ACCESSORIES

DUE TO THE SIZE OF THE CABINET, CONTROLS OTHER THAN THERMOSTATS AND DISCONNECTS MUST BE MOUNTED IN A CONTROL SECTION. SEE BELOW.

## CONTROL SECTIONS:

12" Control Sections:

12" long and can be attached to the enclosure. Contains 1, 2, or 3 items. right or left side mounting. (6" CS for 1 or 2 items).

## TRANSFORMER RELAY:

Single pole, rated 25 amp 120 - 277 volt. Contact rated up to 277 volt (specify). Coils are 24 to 277 volt (specify).

## POWER RELAY, CONTACTORS, PE RELAYS, MERCURY RELAY:

Single or double pole (specify). 20 amp rated 120 - 277 volt. Low or line volts coils (specify).

## DUPLEX RECEPTACLE:

Mounted on front cover. 15 amp rated 120 volt.

## FUSED DISCONNECT:

Fuse block with 20 amp fuse and disconnect switch.

## THERMOSTATS:

Single or double pole rated 25 amp 120 - 277 volt adjustable through discharge grill.

## DISCONNECT SWITCH:

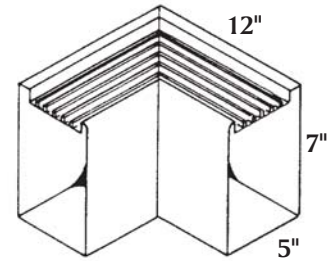
Double pole rated 20 amp 120 - 277 volt.

# ACCESSORIES

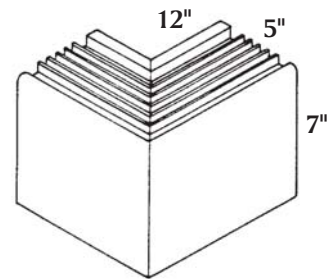
* CAT NO.	DESCRIPTION
LB-WT	Wall Trim (specify 4" or 6")
LB-SP	Splice Plate
LB-EC	End Cap (specify right or left)
LB-IC	Inside Corner (specify miter degree)
LB-OC	Outside Corner (specify miter degree)
LB-BS	Blank Section (specify length 6" - 15")
LBT	Bottom Intake, Top Discharge
LBF	Front Intake, Top Discharge

LENGTH	NOMINAL WATTS/FT.	HEAT WATTS	CAT NO.	VOLTS
2'	150	300	2150	
	188	376	2188	
	250	500	2250	
	375	750	2375	
	500	1000	2500	
3'	100	300	3100	
	125	375	3125	
	188	564	3188	
	250	750	3250	
	375	1125	3375	
4'	100	400	4100	120
	125	500	4125	
	188	750	4188	
	250	1000	4250	
	375	1500	4375	
5'	500	2000	4500	208
	100	500	5100	
	125	625	5125	
	188	940	5188	
	250	1250	5250	
6'	375	1875	5375	240
	500	2500	5500	
	100	600	6100	
	125	750	6125	
	188	1125	6188	
7'	250	1500	6250	or 277
	375	2250	6375	
	500	3000	6500	
	100	700	7100	
	125	875	7125	
8'	188	1316	7188	
	250	1750	7250	
	375	2625	7375	
	500	3500	7500	
	100	800	8100	
9'	125	1200	8150	
	188	1600	8200	
	250	2000	8250	
	375	3000	8375	
	500	4000	8500	
10'	100	900	9100	
	125	1125	9125	
	188	1692	9188	
	250	2250	9250	
	375	3375	9375	
500	4500	9500	10100	
	100	1000	10250	
	125	1250	10188	
	188	1875	10188	
	250	2500	10250	
500	375	3750	10375	
	500	5000	10500	

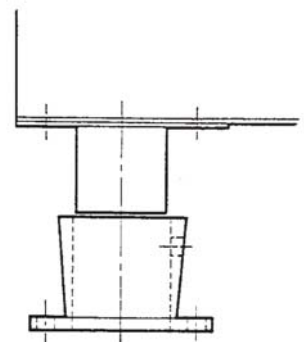
NOTE: Consult factory for 120 volt applications.



INSIDE CORNER



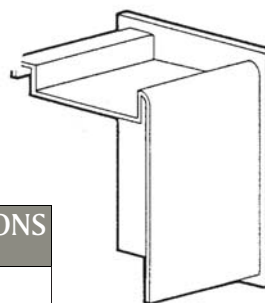
OUTSIDE CORNER



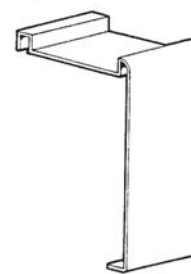
CAST PEDESTAL

# ACCESSORIES

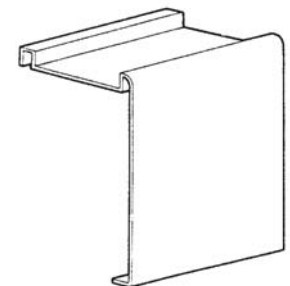
DESCRIPTION	SERIES LBT OR LBF CATALOG NUMBER	DIMENSIONS D/H/L	
BLANKS	LBT or LBF 100BS	5"x7"x1'	
	LBT or LBF 200BS	5"x7"x2'	
	LBT or LBF 300BS	5"x7"x3'	
	LBT or LBF 400BS	5"x7"x4'	
	LBT or LBF 500BS	5"x7"x5'	
	LBT or LBF 600BS	5"x7"x6'	
	LBT or LBF 700BS	5"x7"x7'	
	LBT or LBF 800BS	5"x7"x8'	
	LBT or LBF 900BS	5"x7"x9'	
	LBT or LBF 1000BS	5"x7"x10'	
	Wall Trim	LBT or LBF - WT	5"x7"x2"
	Splice Plate	LBT or LBF - SP	5"x7"x1-1/2"
	Inside Corner	LBT or LBF - IC	5"x7"x6"
Outside Corner	LBT or LBF - OC	5"x7"x6"	
End Caps	LBT or LBF - EC	5"x7"x1/8"	



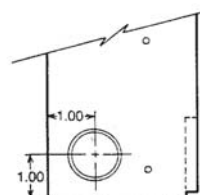
END CAP



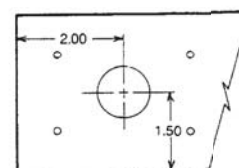
SPLICE PLATE



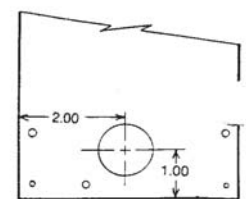
WALL TRIM



SIDE VIEW



BOTTOM VIEW  
Pedestal Unit Only



BACK VIEW

# ELECTRIC PRODUCTS

## COLOR CHART PAINTED FINISHES

