

LINOVECTOR II

VCE
Column Enclosure Kit
Horizontal

Submittal

Specification

VCE COLUMN ENCLOSURE:

- STYLE: Horizontal Column Enclosure
(No Slip Joints)
- OUTLET: No Louvers, Flat Top
Closed Bottom, Return to Wall
- SIZE: Columns up to 25" Wide
- MAT'L: 18 Ga. CRS (Std)
 16 Ga. CRS (Opt'l)
 14 Ga. CRS (Opt'l)
 16 Ga. Stainless Steel (Opt'l)
 14 Ga. Aluminum (Opt'l)
- HEIGHTS: 4"
 5"
 11"
 17"
- FINISH: Baked Powder (Std)
 Baked Metallic (Opt'l)

SCE KIT INCLUDES:

COLUMN ENCLOSURE

- TYPE: VCE Half Qty. of 2
MAT'L: 18 Ga. CRS (Std)

BACKPLATE:

- TYPE: V610 Mounting Strip
LENGTHS: 4'0" Piece Qty. of 1
MAT'L: 18 Ga. Galvannealed (Std)

2-1/2" SPLICE PLATE:

- Qty. of 1
MAT'L: 18 Ga. Galvannealed (Std)

U-CHANNEL:

- MAT'L: Rubber Trim

PIPE HANGERS:

- TYPE: RPH (Opt'l)
MAT'L: 1/8" Galvannealed (Std)

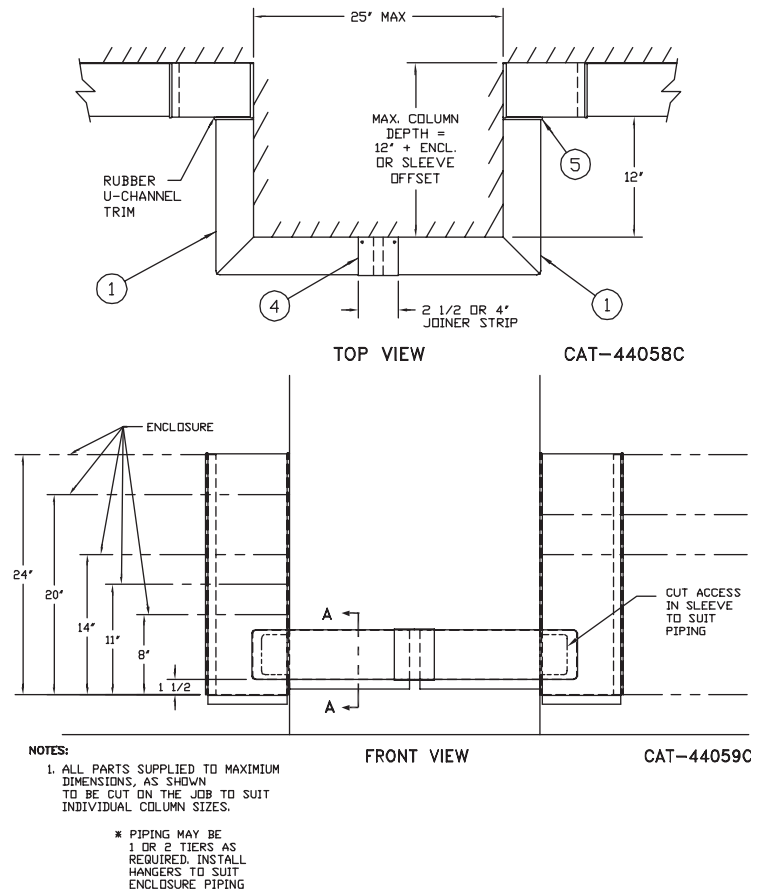
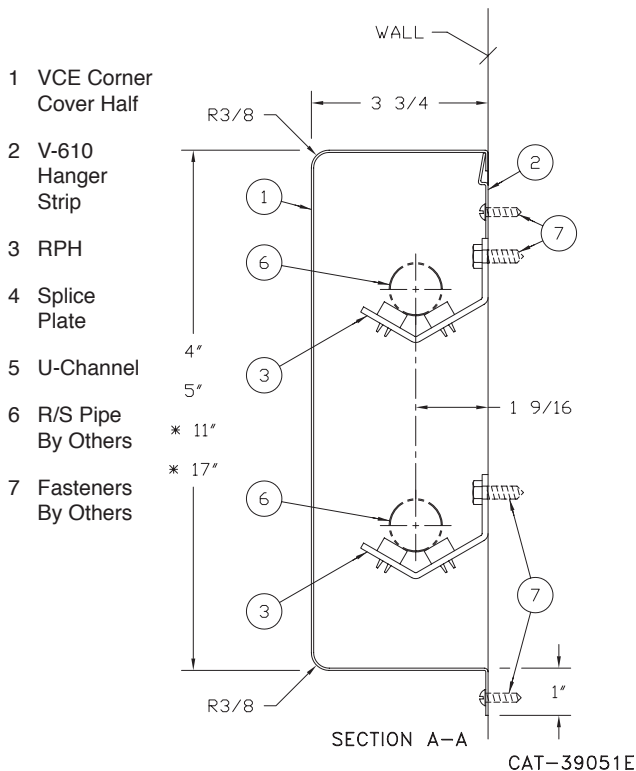
VCE COLUMN ENCLOSURE KIT

VCE-4

VCE-5

VCE-11

VCE-17



Vulcan
RADIATOR

260 North Elm St., Westfield, MA 01085
(413) 568-9571 Fax: (413) 564-5661
www.vulcanrad.com

PROJECT: _____ DATE: _____
LOCATION: _____
ARCHITECT: _____
ENGINEER: _____
CONTRACTOR: _____
PO NUMBER: _____