

LINOVECTOR II

VCE
Column Enclosure Kit
Horizontal

Submittal

Specification

VCE COLUMN ENCLOSURE:

- STYLE: Horizontal Column Enclosure
(No Slip Joints)
- OUTLET: No Louvers, Flat Top
Closed Bottom, Return to Wall
- SIZE: Columns up to 25" Wide
- MAT'L: 18 Ga. CRS Std.
 16 Ga. CRS (Opt'l)
 14 Ga. CRS (Opt'l)
- FINISH: Baked Primer Std.
 Baked Enamel (Opt'l).
 16 Ga. Stainless Steel (Opt'l)
 14 Ga. Aluminum Clear Anod (Opt'l)

VCE KIT INCLUDES:

COLUMN ENCLOSURE

- TYPE: VCE Half Qty. of 2
MAT'L: 18 Ga. CRS Std.

BACKPLATE:

- TYPE: V610 Mounting Strip
LENGTHS: 4'0" Piece Qty. of 1
MAT'L: 18 Ga. Galvannealed Std.

2-1/2" SPLICE PLATE

- Qty. of 1
18 Ga. CRS Std.

U-CHANNEL

- MAT'L: Rubber Trim

PIPE HANGERS:

- TYPE: RPH-2 (Opt'l)
MAT'L: 1/8" Galvannealed Std.

VCE COLUMN ENCLOSURE KIT

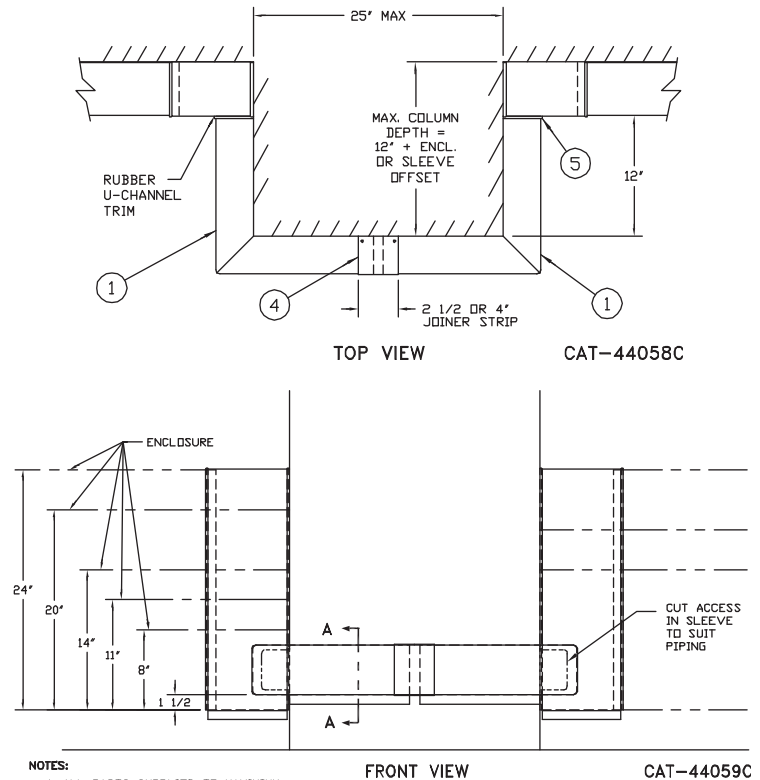
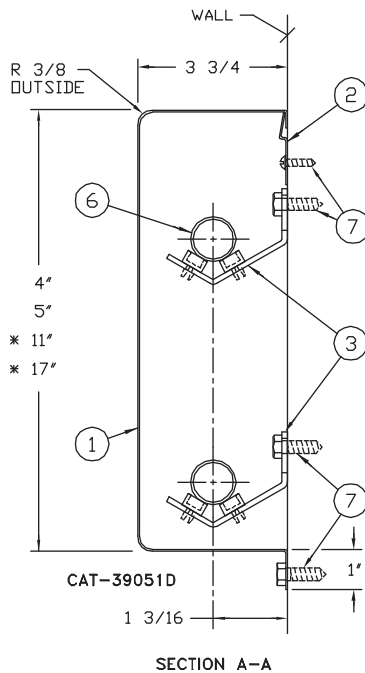
VCE-4

VCE-5

VCE-11

VCE-17

- 1 VCE Corner Cover Half
- 2 V-610 Hanger Strip
- 3 RPH - 2
- 4 Splice Plate
- 5 U-Channel
- 6 R/S Pipe By Others
- 7 Fasteners By Others



NOTES:

1. ALL PARTS SUPPLIED TO MAXIMUM DIMENSIONS, AS SHOWN TO BE CUT ON THE JOB TO SUIT INDIVIDUAL COLUMN SIZES.

* PIPING MAY BE 1 OR 2 TIERS AS REQUIRED. INSTALL HANGERS TO SUIT ENCLOSURE PIPING

Vulcan
RADIATOR

260 North Elm St., Westfield, MA 01085
(413) 568-9571 Fax: (413) 564-5661
www.vulcanrad.com



01/13

PROJECT: _____ DATE: _____
LOCATION: _____
ARCHITECT: _____
ENGINEER: _____
CONTRACTOR: _____
PO NUMBER: _____