

LINOVECTOR II

Submittal

LV3-C / LV4-C
Flat Top Enclosures
Copper/Aluminum
Steel Elements

Specification

LV3-C Flat Top Enclosure

ENCLOSURE:

STYLE: Flat Top
OUTLET: Louvered
Pencil Proof

LENGTHS: 2' thru 8' in 6" Increments

MAT'L: 18 Ga. CRS Std.
 16 Ga. CRS (Opt'l.)
 14 Ga. CRS (Opt'l.)

FINISH: Baked Primer
 Baked Enamel (Opt'l.)
 16 Ga. Stainless Steel (Opt'l.)
 14 Ga. Aluminum (Opt'l.)

ACCESSORIES:

All overlapping type.

ELEMENT:

TYPE: Cu/Al (Mechanically Expanded)
LENGTHS: 2'0" thru 12'6" in 1" Increments for 1" & 1-1/4" Cu.

One End Flared, Std.

TYPE: IPS Steel (Mechanically Expanded)

LENGTHS: 2'0" thru 12'6" in 1" Increments.
 N.P.T. Thread Both Ends

Std.

Beveled Ends For Field Weld.
See Catalog for Working Pressures

LV4-C Flat Top Enclosure

BACKPLATE:

TYPE: N/A

BRACKETS:

B.B. Hanger Wall Mtd.

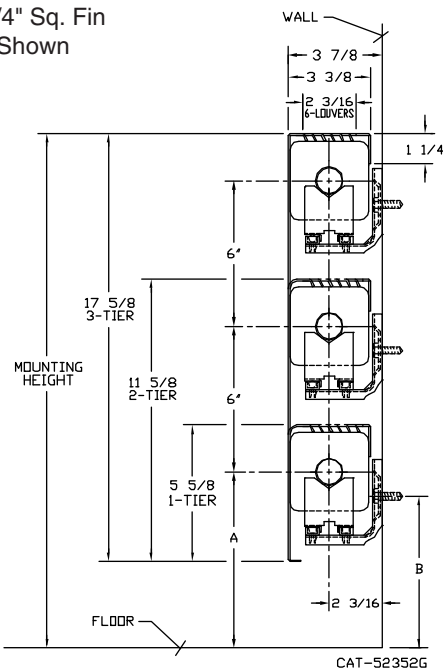
LV3-C

ELEMENT TUBE SIZE	CRADLE NO.	A	B
3/4" COPPER	2	7-1/4	6-7/16
1" COPPER	2	7-1/4	6-1/4
1-1/4" COPPER	1	7-1/4	6-13/16
1-1/4" STEEL	1	7-1/4	6-5/8

LV4-C

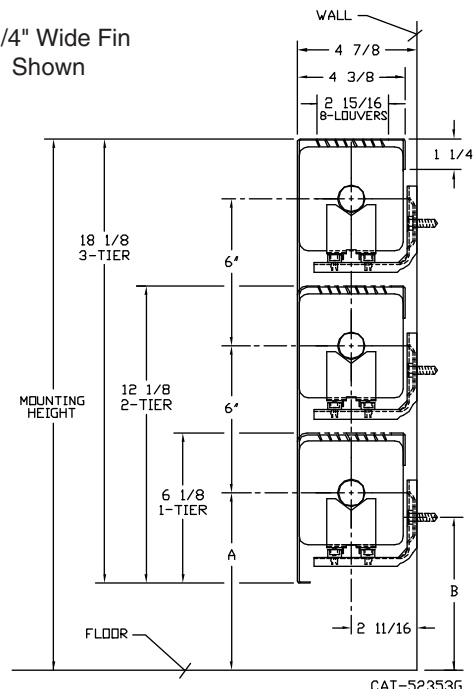
ELEMENT TUBE SIZE	CRADLE NO.	FIN HEIGHT			
		3-5/8		4-1/4	
		A	B	A	B
3/4" COPPER	2	7-9/16	6-3/4	N/A	N/A
1" COPPER	2	7-9/16	6-9/16	7-1/4	6-1/4
1-1/4" COPPER	2	7-9/16	6-3/8	7-1/4	6-1/8
1-1/4" STEEL	2	N/A	N/A	7-1/4	5-15/16
2" STEEL	1	N/A	N/A	7-1/4	6-3/16

3-1/4" Sq. Fin Shown



CAT-52352G

4-1/4" Wide Fin Shown



CAT-52353G



260 North Elm St., Westfield, MA 01085
(413) 568-9571 Fax: (413) 564-5661
www.vulcanrad.com

PROJECT: _____ DATE: _____
 LOCATION: _____
 ARCHITECT: _____
 ENGINEER: _____
 CONTRACTOR: _____
 PO NUMBER: _____

STYLE "LV3 / LV4"

STEEL ELEMENTS

I.P.S. SIZE	CATALOG DESIGNATION	FIN SIZE HEIGHT X WIDTH	FIN PER. FT.	FIN THICKNESS IN INCHES	ENCL DEPTH AND HEIGHT IN INCHES	TIERS AND CENTERS IN INCHES	MTG. HEIGHT IN INCHES	STEAM 215° FACTOR	HOT WATER (AVG.)					
									200°	190°	180°	170°	160°	150°
									FACTOR					
							1.00	0.86	0.78	0.69	0.61	0.53	0.45	
1-1/4"	VS133	3-1/4" SQ.	32	.032	5-5/8 3	1	8-7/16"	810	700	640	560	500	430	370
					11-5/8 3	2 @ 6 CL	14-7/16"	1390	1200	1090	960	850	740	630
					17-5/8 3	3 @ 6 CL	20-7/16"	1740	1500	1360	1210	1070	930	790
1-1/4"	VS134	3-1/4" SQ.	40	.032	5-5/8 3	1	8-7/16"	900	780	710	620	550	480	410
					11-5/8 3	2 @ 6 CL	14-7/16"	1460	1260	1140	1010	900	780	660
					17-5/8 3	3 @ 6 CL	20-7/16"	1810	1560	1420	1260	1110	970	820
1-1/4"	VS143	4-1/4" SQ.	32	.032	6-1/8 4	1	9-5/8"	1180	1020	930	820	720	630	540
					12-1/8 4	2 @ 6 CL	15-5/8"	1960	1690	1540	1360	1200	1050	890
					18-1/8 4	3 @ 6 CL	21-5/8"	2420	2090	1900	1680	1490	1290	1100
1-1/4"	VS144	4-1/4" SQ.	40	.032	6-1/8 4	1	9-5/8"	1330	1150	1040	920	820	710	600
					12-1/8 4	2 @ 6 CL	15-5/8"	2070	1790	1620	1440	1270	1110	940
					18-1/8 4	3 @ 6 CL	21-5/8"	2540	2190	1990	1760	1560	1360	1150
2"	VS242	4-1/4" SQ.	25	.032	6-1/8 4	1	9-3/8"	1030	890	810	710	630	550	470
					12-1/8 4	2 @ 6 CL	15-3/8"	1730	1490	1360	1200	1060	920	790
					18-1/8 4	3 @ 6 CL	21-3/8"	2160	1870	1690	1500	1330	1150	980
2"	VS243	4-1/4" SQ.	32	.032	6-1/8 4	1	9-3/8"	1190	1030	930	830	730	640	540
					12-1/8 4	2 @ 6 CL	15-3/8"	1900	1640	1490	1320	1170	1010	860
					18-1/8 4	3 @ 6 CL	21-3/8"	2330	2010	1830	1620	1430	1240	1060


- Notes: 1) Steel fins furnished as .032 thick painted black
 2) NPT threads furnished on steel elements. Please use domestic fittings for proper installation.
 3) The ends can be provided chamfered for field welded fittings when specified.

COPPER/ALUMINUM ELEMENTS

TUBE SIZE	CATALOG DESIGNATION	FIN SIZE HEIGHT X WIDTH	FIN PER. FT.	FIN THICKNESS IN INCHES	ENCL DEPTH AND HEIGHT IN INCHES	TIERS AND CENTERS IN INCHES	MTG. HEIGHT IN INCHES	STEAM 215° FACTOR	HOT WATER (AVG.)					
									200°	190°	180°	170°	160°	150°
									FACTOR					
								1.00	0.86	0.78	0.69	0.61	0.53	0.45
3/4"	VC3/4-33	3-1/4" SQ.	32	.020	5-5/8 3	1	8-7/8"	870	750	680	600	530	460	390
					11-5/8 3	2 @ 6 CL	14-7/8"	1380	1190	1080	960	850	740	630
					17-5/8 3	3 @ 6 CL	20-7/8"	1710	1480	1340	1190	1050	910	780
3/4"	VC3/4-34	3-1/4" SQ.	40	.020	5-5/8 3	1	8-7/8"	1030	890	810	710	630	550	470
					11-5/8 3	2 @ 6 CL	14-7/8"	1620	1400	1270	1120	990	870	740
					17-5/8 3	3 @ 6 CL	20-7/8"	2010	1740	1580	1390	1230	1070	910
3/4"	VC3/4-35	3-1/4" SQ.	50	.020	5-5/8 3	1	8-7/8"	1130	980	890	780	690	600	510
					11-5/8 3	2 @ 6 CL	14-7/8"	1720	1490	1350	1190	1060	920	780
					17-5/8 3	3 @ 6 CL	20-7/8"	2120	1830	1660	1470	1300	1130	960
1"	VC33	3-1/4" SQ.	32	.020	5-5/8 3	1	8-7/8"	870	750	680	600	530	460	390
					11-5/8 3	2 @ 6 CL	14-7/8"	1490	1290	1170	1030	910	800	680
					17-5/8 3	3 @ 6 CL	20-7/8"	1930	1670	1510	1340	1190	1030	880
1"	VC34	3-1/4" SQ.	40	.020	5-5/8 3	1	8-7/8"	970	840	760	670	600	520	440
					11-5/8 3	2 @ 6 CL	14-7/8"	1560	1350	1220	1080	960	830	710
					17-5/8 3	3 @ 6 CL	20-7/8"	1960	1690	1540	1360	1200	1050	890
1"	VC35	3-1/4" SQ.	50	.020	5-5/8 3	1	8-7/8"	1090	940	850	760	670	580	490
					11-5/8 3	2 @ 6 CL	14-7/8"	1560	1350	1220	1080	960	830	710
					17-5/8 3	3 @ 6 CL	20-7/8"	1980	1710	1550	1370	1220	1060	900
1-1/4"	VC133	3-1/4" SQ.	32	.020	5-5/8 3	1	8-7/8"	870	750	680	600	530	460	390
					11-5/8 3	2 @ 6 CL	14-7/8"	1500	1300	1180	1040	920	800	680
					17-5/8 3	3 @ 6 CL	20-7/8"	1900	1640	1490	1320	1170	1010	860
1-1/4"	VC134	3-1/4" SQ.	40	.020	5-5/8 3	1	8-7/8"	950	820	740	660	580	510	430
					11-5/8 3	2 @ 6 CL	14-7/8"	1530	1320	1200	1060	940	820	690
					17-5/8 3	3 @ 6 CL	20-7/8"	1890	1630	1480	1310	1160	1010	860
1-1/4"	VC135	3-1/4" SQ.	50	.020	5-5/8 3	1	8-7/8"	1050	910	820	730	640	560	480
					11-5/8 3	2 @ 6 CL	14-7/8"	1670	1440	1310	1160	1030	890	760
					17-5/8 3	3 @ 6 CL	20-7/8"	1920	1660	1510	1330	1180	1030	870
3/4"	VC3/4-433	3-5/8" X 4-1/4"	32	.020	6-1/8 4	1	9-3/8"	1090	940	850	760	670	580	490
					12-1/8 4	2 @ 6 CL	15-3/8"	1840	1590	1440	1280	1130	980	840
					18-1/8 4	3 @ 6 CL	21-3/8"	2340	2020	1830	1620	1440	1250	1060
3/4"	VC3/4-434	3-5/8" X 4-1/4"	40	.020	6-1/8 4	1	9-3/8"	1310	1130	1030	910	800	700	590
					12-1/8 4	2 @ 6 CL	15-3/8"	2030	1750	1590	1410	1250	1080	920
					18-1/8 4	3 @ 6 CL	21-3/8"	2580	2230	2020	1790	1580	1380	1170
3/4"	VC3/4-435	3-5/8" X 4-1/4"	50	.020	6-1/8 4	1	9-3/8"	1440	1240	1130	1000	880	770	650
					12-1/8 4	2 @ 6 CL	15-3/8"	2280	1970	1790	1580	1400	1220	1040
					18-1/8 4	3 @ 6 CL	21-3/8"	2880	2490	2260	2000	1770	1540	1310

TUBE SIZE	CATALOG DESIGNATION	FIN SIZE HEIGHT X WIDTH	FIN PER. FT.	FIN THICKNESS IN INCHES	ENCL DEPTH AND HEIGHT IN INCHES	TIERS AND CENTERS IN INCHES	MTG. HEIGHT IN INCHES	STEAM 215° FACTOR	HOT WATER (AVG.)					
									200°	190°	180°	170°	160°	150°
									FACTOR					
1"	VC433	3-5/8" X 4-1/4"	▶ 32	<i>.020</i>	6-1/8 4	1	9-3/8	1.00	0.86	0.78	0.69	0.61	0.53	0.45
					12-1/8 4	2 @ 6 CL	15-3/8	870	750	680	600	530	460	390
					18-1/8 4	3 @ 6 CL	21-3/8	1380	1190	1080	960	850	740	630
1"	VC434	3-5/8" X 4-1/4"	▶ 40	<i>.020</i>	6-1/8 4	1	9-3/8	880	760	690	610	540	470	400
					12-1/8 4	2 @ 6 CL	15-3/8	1570	1360	1230	1090	960	840	710
					18-1/8 4	3 @ 6 CL	21-3/8	2140	1850	1680	1490	1310	1140	970
1"	VC435	3-5/8" X 4-1/4"	▶ 50	<i>.020</i>	6-1/8 4	1	9-3/8	1100	950	860	760	680	590	500
					12-1/8 4	2 @ 6 CL	15-3/8	1570	1360	1230	1090	960	840	710
					18-1/8 4	3 @ 6 CL	21-3/8	1980	1710	1550	1370	1220	1060	900
1-1/4"	VC1433	3-5/8" X 4-1/4"	▶ 32	<i>.020</i>	6-1/8 4	1	9-3/8	870	750	680	600	530	460	390
					12-1/8 4	2 @ 6 CL	15-3/8	1390	1200	1090	960	850	740	630
					18-1/8 4	3 @ 6 CL	21-3/8	1790	1550	1400	1240	1100	960	810
1-1/4"	VC1434	3-5/8" X 4-1/4"	▶ 40	<i>.020</i>	6-1/8 4	1	9-3/8	960	830	750	670	590	510	440
					12-1/8 4	2 @ 6 CL	15-3/8	1560	1350	1220	1080	960	830	710
					18-1/8 4	3 @ 6 CL	21-3/8	1900	1640	1490	1320	1170	1010	860
1-1/4"	VC1435	3-5/8" X 4-1/4"	▶ 50	<i>.020</i>	6-1/8 4	1	9-3/8	1050	910	820	730	640	560	480
					12-1/8 4	2 @ 6 CL	15-3/8	1580	1370	1240	1100	970	840	720
					18-1/8 4	3 @ 6 CL	21-3/8	1990	1720	1560	1380	1220	1060	900
1"	VC43	4-1/4" SQ.	▶ 32	<i>.020</i>	6-1/8 4	1	9-3/8	880	760	690	610	540	470	400
					12-1/8 4	2 @ 6 CL	15-3/8	1500	1300	1180	1040	920	800	680
					18-1/8 4	3 @ 6 CL	21-3/8	1900	1640	1490	1320	1170	1010	860
1"	VC44	4-1/4" SQ.	▶ 40	<i>.020</i>	6-1/8 4	1	9-3/8	1030	890	810	710	630	550	470
					12-1/8 4	2 @ 6 CL	15-3/8	1600	1380	1250	1110	980	850	730
					18-1/8 4	3 @ 6 CL	21-3/8	2150	1860	1690	1490	1320	1150	980
1"	VC45	4-1/4" SQ.	▶ 50	<i>.020</i>	6-1/8 4	1	9-3/8	1130	980	890	780	690	600	510
					12-1/8 4	2 @ 6 CL	15-3/8	1720	1490	1350	1190	1060	920	780
					18-1/8 4	3 @ 6 CL	21-3/8	2120	1830	1660	1470	1300	1130	960
1-1/4"	VC143	4-1/4" SQ.	▶ 32	<i>.020</i>	6-1/8 4	1	9-3/8	870	750	680	600	530	460	390
					12-1/8 4	2 @ 6 CL	15-3/8	1380	1190	1080	960	850	740	630
					18-1/8 4	3 @ 6 CL	21-3/8	2010	1740	1580	1390	1230	1070	910
1-1/4"	VC144	4-1/4" SQ.	▶ 40	<i>.020</i>	6-1/8 4	1	9-3/8	880	760	690	610	540	470	400
					12-1/8 4	2 @ 6 CL	15-3/8	1570	1360	1230	1090	960	840	710
					18-1/8 4	3 @ 6 CL	21-3/8	2140	1850	1680	1490	1310	1140	970
1-1/4"	VC145	4-1/4" SQ.	▶ 50	<i>.020</i>	6-1/8 4	1	9-3/8	1100	950	860	760	680	590	500
					12-1/8 4	2 @ 6 CL	15-3/8	1570	1360	1230	1090	960	840	710
					18-1/8 4	3 @ 6 CL	21-3/8	1980	1710	1550	1370	1220	1060	900

Note: Copper tube furnished flared one end standard.

▶ Bold, italicized units are  rated ◀