

CLASSIC

Submittal

JV4-ARDS19, 25 & 29
Classic Architectural
Copper/Aluminum and
Steel Elements

JV4 Slip Jointed Enclosure

Specification

ENCLOSURE:

STYLE: Classic Double Slope
OUTLET: Extruded Aluminum
Pencil Proof

LENGTHS: 2'0" thru 8'0" in 6" Increments

MAT'L: 16 Ga. CRS (Std)
 14 Ga. CRS (Opt'l)
 16 Ga. Stainless Steel (Opt'l)
 14 Ga. Stainless Steel (Opt'l)
 14 Ga. Aluminum (Opt'l)
 12 Ga. Aluminum (Opt'l)

HEIGHT: 19-1/2"
 25-1/2"
 29-1/2"

FINISH: Baked Powder (Std)
 Baked Metallic

ACCESSORIES:

All Accessories are Overlapping type

All accessories return to the wall at the bottom and have pre-punched holes for fastening to the wall.

ELEMENT:

TYPE: Cu/Al (Mechanically Expanded)

LENGTHS: 2'0" thru 12'6" in 1" Increments for 1" & 1-1/4" Cu.
2'0" thru 8'0" in 1" Increments or 3/4" Cu

One End Flared, (Std)

TYPE: IPS Steel (Mechanically Expanded)

LENGTHS: 2'0" Thru 12'0" in 1" Increments
 NPT Thread both Ends (Std)
 Beveled Ends for Field Weld

See Catalog for Working Pressures

BACKPLATE:

TYPE: Partial B/P

LENGTHS: 8'0" Only

MAT'L: 20 Ga. Prepainted (Std)
 18 Ga. Galvannealed (Opt'l)

TYPE: Full Ht. B/P (Opt'l)

LENGTHS: 2'0" thru 8'0" in 6" Increments

MAT'L: 20 Ga. Galvannealed (Opt'l)
 20 Ga. Painted (Opt'l)
 18 Ga. Painted (Opt'l)

AIRSEAL:

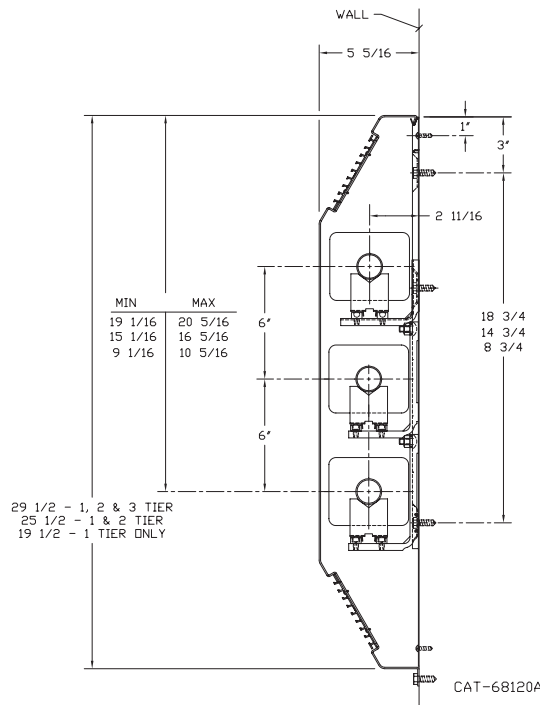
1/8" x 3/8" Closed Cell (Opt'l)

BRACKETS:

Vertical Wall Brkt w/B.B. Hgr
 Wall Bkt w/B.B. Hgr (For 3rd Tier)

DAMPER: Not Available

JV4-ARDS19, 25 & 29



Vulcan
RADIATOR

260 North Elm St., Westfield, MA 01085
(413) 568-9571 Fax: (413) 564-5661
www.vulcanrad.com



PROJECT: _____ DATE: _____

LOCATION: _____

ARCHITECT: _____

ENGINEER: _____

CONTRACTOR: _____

PO NUMBER: _____

STYLE JV4-ARDS19, 25 & 29

COPPER/ALUMINUM ELEMENT RATINGS

ALL RATINGS ARE BASED ON 3 FPS WATER VELOCITY, 65° EAT.

TUBE SIZE	CATALOG DESIGNATION	FIN SIZE HEIGHT X WIDTH	FIN PER FT.	FIN THICKNESS	ENCL. HEIGHT	TIERS AND CENTERS	STEAM RATING 215°F, 65°F E.A.T. BTU/FT/HR	HOT WATER RATINGS BTU/FT/HR AWT						
								180°	170°	160°	150°	140°	130°	120°
								0.69	0.61	0.53	0.45	.40	.33	.26
3/4"	VC3/4-433	3-5/8" x 4-1/4"	32	.020	19 1/2	1	1220	840	740	650	550	490	400	320
					25 1/2	1	1305	900	800	690	590	520	430	340
					25 1/2	2-6CL	1985	1370	1210	1050	890	790	660	520
					29 1/2	1	1370	950	840	730	620	550	450	360
					29 1/2	2-6CL	2080	1440	1270	1100	940	830	690	540
3/4"	VC3/4-434	3-5/8" x 4-1/4"	40	.020	19 1/2	1	1470	1010	900	780	660	590	490	380
					25 1/2	1	1570	1080	960	830	710	630	520	410
					25 1/2	2-6 CL	2230	1540	1360	1180	1000	890	740	580
					29 1/2	1	1650	1140	1010	870	740	660	540	430
					29 1/2	2-6 CL	2330	1610	1420	1230	1050	930	770	610
3/4"	VC3/4-435	3-5/8" x 4-1/4"	50	.020	19 1/2	1	1590	1100	970	840	720	640	520	410
					25 1/2	1	1805	1250	1100	960	810	720	600	470
					25 1/2	2-6 CL	2435	1680	1490	1290	1100	970	800	630
					29 1/2	1	1950	1350	1190	1030	880	780	640	510
					29 1/2	2-6 CL	2685	1850	1640	1420	1210	1070	890	700
1"	VC433	3-5/8" x 4-1/4"	32	.020	19 1/2	1	1330	920	810	700	600	530	440	350
					25 1/2	1	1400	970	850	740	630	560	460	360
					25 1/2	2-6 CL	2160	1490	1320	1140	970	860	710	560
					29 1/2	1	1460	1010	890	770	660	580	480	380
					29 1/2	2-6 CL	2235	1540	1360	1180	1010	890	740	580
1"	VC434	3-5/8" x 4-1/4"	40	.020	19 1/2	1	1535	1060	940	810	690	610	510	400
					25 1/2	1	1640	1130	1000	870	740	660	540	430
					25 1/2	2-6 CL	2300	1590	1400	1220	1040	920	760	600
					29 1/2	1	1720	1190	1050	910	770	690	570	450
					29 1/2	2-6 CL	2390	1650	1460	1270	1080	960	790	620
1"	VC435	3-5/8" x 4-1/4"	50	.020	19 1/2	1	1665	1150	1020	880	750	670	550	430
					25 1/2	1	1880	1300	1150	1000	850	750	620	490
					25 1/2	2-6 CL	2280	1570	1390	1210	1030	910	750	590
					29 1/2	1	2040	1410	1240	1080	920	820	670	530
					29 1/2	2-6 CL	2510	1730	1530	1330	1130	1000	830	650
1-1/4"	VC1433	3-5/8" x 4-1/4"	32	.020	19 1/2	1	1250	860	760	660	560	500	410	330
					25 1/2	1	1320	910	810	700	590	530	440	340
					25 1/2	2-6 CL	2040	1410	1240	1080	920	820	670	530
					29 1/2	1	1375	950	840	730	620	550	450	360
					29 1/2	2-6 CL	2115	1460	1290	1120	950	850	700	550
1-1/4"	VC1434	3-5/8" x 4-1/4"	40	.020	19 1/2	1	1500	1040	920	800	680	600	500	390
					25 1/2	1	1625	1120	990	860	730	650	540	420
					25 1/2	2-6 CL	2255	1560	1380	1200	1010	900	740	590
					29 1/2	1	1685	1160	1030	890	760	670	560	440
					29 1/2	2-6 CL	2340	1610	1430	1240	1050	940	770	610
1-1/4"	VC1435	3-5/8" x 4-1/4"	50	.020	19 1/2	1	1610	1110	980	850	720	640	530	420
					25 1/2	1	1840	1270	1120	980	830	740	610	480
					25 1/2	2-6 CL	2165	1490	1320	1150	970	870	710	560
					29 1/2	1	1960	1350	1200	1040	880	780	650	510
					29 1/2	2-6 CL	2425	1670	1480	1290	1090	970	800	630
29 1/2	3-6 CL	2740	1890	1670	1450	1230	1100	900	710					

STYLE JV4-ARDS19, 25 & 29

COPPER/ALUMINUM ELEMENT RATINGS

ALL RATINGS ARE BASED ON 3 FPS WATER VELOCITY, 65° EAT.

TUBE SIZE	CATALOG DESIGNATION	FIN SIZE HEIGHT X WIDTH	FIN PER FT.	FIN THICKNESS	ENCL. HEIGHT	TIERS AND CENTERS	STEAM RATING 215°F, 65°F E. A. T. BTU/FT/HR	HOT WATER RATINGS BTU/FT/HR AWT						
								180°	170°	160°	150°	140°	130°	120°
								0.69	0.61	0.53	0.45	.40	.33	.26
3/4"	VC3/4-43	4-1/4" SQ.	32	.020	19 1/2	1	1320	910	810	700	590	530	440	340
					25 1/2	1	1415	980	860	750	640	570	470	370
					25 1/2	2-6 CL	2180	1500	1330	1160	980	870	720	570
					29 1/2	1	1480	1020	900	780	670	590	490	380
					29 1/2	2-6 CL	2280	1570	1390	1210	1030	910	750	590
					29 1/2	3-6 CL	2620	1810	1600	1390	1180	1050	860	680
3/4"	VC3/4-44	4-1/4" SQ.	40	.020	19 1/2	1	1610	1110	980	850	720	640	530	420
					25 1/2	1	1730	1190	1060	920	780	690	570	450
					25 1/2	2-6 CL	2430	1680	1480	1290	1090	970	800	630
					29 1/2	1	1800	1240	1100	950	810	720	590	470
					29 1/2	2-6 CL	2540	1750	1550	1350	1140	1020	840	660
					29 1/2	3-6 CL	2900	2000	1770	1540	1310	1160	960	750
3/4"	VC3/4-45	4-1/4" SQ.	50	.020	19 1/2	1	1650	1140	1010	870	740	660	540	430
					25 1/2	1	1770	1220	1080	940	800	710	580	460
					25 1/2	2-6 CL	2440	1680	1490	1290	1100	980	810	630
					29 1/2	1	1990	1370	1210	1050	900	800	660	520
					29 1/2	2-6 CL	2550	1760	1560	1350	1150	1020	840	660
					29 1/2	3-6 CL	2880	1990	1760	1530	1300	1150	950	750
1"	VC43	4-1/4" SQ.	32	.020	19 1/2	1	1425	980	870	760	640	570	470	370
					25 1/2	1	1500	1040	920	800	680	600	500	390
					25 1/2	2-6 CL	2235	1540	1360	1180	1010	890	740	580
					29 1/2	1	1565	1080	950	830	700	630	520	410
					29 1/2	2-6 CL	2445	1690	1490	1300	1100	980	810	640
					29 1/2	3-6 CL	2810	1940	1710	1490	1260	1120	930	730
1"	VC44	4-1/4" SQ.	40	.020	19 1/2	1	1625	1120	990	860	730	650	540	420
					25 1/2	1	1760	1210	1070	930	790	700	580	460
					25 1/2	2-6 CL	2325	1600	1420	1230	1050	930	770	600
					29 1/2	1	1850	1280	1130	980	830	740	610	480
					29 1/2	2-6 CL	2520	1740	1540	1340	1130	1010	830	660
					29 1/2	3-6 CL	2870	1980	1750	1520	1290	1150	950	750
1"	VC45	4-1/4" SQ.	50	.020	19 1/2	1	1780	1230	1090	940	800	710	590	460
					25 1/2	1	2020	1390	1230	1070	910	810	670	530
					25 1/2	2-6 CL	2315	1600	1410	1230	1040	930	760	600
					29 1/2	1	2165	1490	1320	1150	970	870	710	560
					29 1/2	2-6 CL	2590	1790	1580	1370	1170	1040	850	670
					29 1/2	3-6 CL	2930	2020	1790	1550	1320	1170	970	760
1-1/4"	VC143	4-1/4" SQ.	32	.020	19 1/2	1	1400	970	850	740	630	560	460	360
					25 1/2	1	1475	1020	900	780	660	590	490	380
					25 1/2	2-6 CL	2195	1510	1340	1160	990	880	720	570
					29 1/2	1	1530	1060	930	810	690	610	500	400
					29 1/2	2-6 CL	2400	1660	1460	1270	1080	960	790	620
					29 1/2	3-6 CL	2760	1900	1680	1460	1240	1100	910	720
1-1/4"	VC144	4-1/4" SQ.	40	.020	19 1/2	1	1600	1100	980	850	720	640	530	420
					25 1/2	1	1725	1190	1050	910	780	690	570	450
					25 1/2	2-6 CL	2280	1570	1390	1210	1030	910	750	590
					29 1/2	1	1815	1250	1110	960	820	730	600	470
					29 1/2	2-6 CL	2480	1710	1510	1310	1120	990	820	640
					29 1/2	3-6 CL	2830	1950	1730	1500	1270	1130	930	740
1-1/4"	VC145	4-1/4" SQ.	50	.020	19 1/2	1	1745	1200	1060	920	790	700	580	450
					25 1/2	1	1985	1370	1210	1050	890	790	660	520
					25 1/2	2-6 CL	2270	1570	1380	1200	1020	910	750	590
					29 1/2	1	2135	1470	1300	1130	960	850	700	560
					29 1/2	2-6 CL	2545	1760	1550	1350	1150	1020	840	660
					29 1/2	3-6 CL	2880	1990	1760	1530	1300	1150	950	750

STYLE JV4-ARDS19, 25 & 29

STEEL ELEMENT RATINGS*

ALL RATINGS ARE BASED ON 3 FPS WATER VELOCITY, 65° EAT.

TUBE SIZE	CATALOG DESIGNATION	FIN SIZE HEIGHT X WIDTH	FIN PER FT.	FIN THICKNESS	ENCL. HEIGHT	TIERS AND CENTERS	STEAM RATING 215°F, 65°F E. A. T. BTU/FT/HR	HOT WATER RATINGS BTU/FT/HR AWT						
								180°	170°	160°	150°	140°	130°	120°
								0.69	0.61	0.53	0.45	.40	.33	.26
1"	VS43	4-1/4" SQ.	32	.032	19 1/2	1	1215	840	740	640	550	490	400	320
					25 1/2	1	1255	870	770	670	560	500	410	330
					25 1/2	2-6 CL	1980	1370	1210	1050	890	790	650	510
					29 1/2	1	1290	890	790	680	580	520	430	340
					29 1/2	2-6 CL	2045	1410	1250	1080	920	820	670	530
					29 1/2	3-6 CL	2350	1620	1430	1250	1060	940	780	610
1"	VS44	4-1/4" SQ.	40	.032	19 1/2	1	1360	940	830	720	610	540	450	350
					25 1/2	1	1445	1000	880	770	650	580	480	380
					25 1/2	2-6 CL	2140	1480	1310	1130	960	860	710	560
					29 1/2	1	1495	1030	910	790	670	600	490	390
					29 1/2	2-6 CL	2240	1550	1370	1190	1010	900	740	580
					29 1/2	3-6 CL	2550	1760	1560	1350	1150	1020	840	660
1"	VS45	4-1/4" SQ.	50	.032	19 1/2	1	1425	980	870	760	640	570	470	370
					25 1/2	1	1515	1050	920	800	680	610	500	390
					25 1/2	2-6 CL	2190	1510	1340	1160	990	880	720	570
					29 1/2	1	1570	1080	960	830	710	630	520	410
					29 1/2	2-6 CL	2295	1580	1400	1220	1030	920	760	600
					29 1/2	3-6 CL	2590	1790	1580	1370	1170	1040	850	670
1-1/4"	VS143	4-1/4" SQ.	32	.032	19 1/2	1	1210	830	740	640	540	480	400	310
					25 1/2	1	1280	880	780	680	580	510	420	330
					25 1/2	2-6 CL	1920	1320	1170	1020	860	770	630	500
					29 1/2	1	1350	930	820	720	610	540	450	350
					29 1/2	2-6 CL	2030	1400	1240	1080	910	810	670	530
					29 1/2	3-6 CL	2330	1610	1420	1230	1050	930	770	610
1-1/4"	VS144	4-1/4" SQ.	40	.032	19 1/2	1	1360	940	830	720	610	540	450	350
					25 1/2	1	1470	1010	900	780	660	590	490	380
					25 1/2	2-6 CL	2090	1440	1270	1110	940	840	690	540
					29 1/2	1	1560	1080	950	830	700	620	510	410
					29 1/2	2-6 CL	2240	1550	1370	1190	1010	900	740	580
					29 1/2	3-6 CL	2550	1760	1560	1350	1150	1020	840	660
1-1/4"	VS145	4-1/4" SQ.	50	.032	19 1/2	1	1415	980	860	750	640	570	470	370
					25 1/2	1	1505	1040	920	800	680	600	500	390
					25 1/2	2-6 CL	2150	1480	1310	1140	970	860	710	560
					29 1/2	1	1555	1070	950	820	700	620	510	400
					29 1/2	2-6 CL	2250	1550	1370	1190	1010	900	740	590
					29 1/2	3-6 CL	2540	1750	1550	1350	1140	1020	840	660
2"	VS242	4-1/4" SQ.	25	.032	19 1/2	1	1050	720	640	560	470	420	350	270
					25 1/2	1	1110	770	680	590	500	440	370	290
					25 1/2	2-6 CL	1670	1150	1020	890	750	670	550	430
					29 1/2	1	1170	810	710	620	530	470	390	300
					29 1/2	2-6 CL	1770	1220	1080	940	800	710	580	460
					29 1/2	3-6 CL	2040	1410	1240	1080	920	820	670	530
2"	VS243	4-1/4" SQ.	32	.032	19 1/2	1	1220	840	740	650	550	490	400	320
					25 1/2	1	1290	890	790	680	580	520	430	340
					25 1/2	2-6 CL	1930	1330	1180	1020	870	770	640	500
					29 1/2	1	1360	940	830	720	610	540	450	350
					29 1/2	2-6 CL	2040	1410	1240	1080	920	820	670	530
					29 1/2	3-6 CL	2350	1620	1430	1250	1060	940	780	610

*NPT threads furnished on steel elements. Please use domestic fittings for proper installation.