

CLASSIC

Submittal

JV3/V3-AR10LI
Classic Architectural
Copper/Aluminum and
Steel Elements

Specification

JV3 Slip Jointed Enclosure

ENCLOSURE:

STYLE: Classic Louvered Inlet
OUTLET: Extruded Aluminum
Pencil Proof

LENGTHS: 2'0" thru 8'0" in 6" Increments

MAT'L: 16 Ga. CRS (Std)
 14 Ga. CRS (Opt'l)
 16 Ga. Stainless Steel (Opt'l)*
 14 Ga. Stainless Steel (Opt'l)*
 14 Ga. Aluminum (Opt'l)
 12 Ga. Aluminum (Opt'l)
*Available on "J" Style Only

FINISH: Baked Powder (Std)
 Baked Metallic

FLOOR ANGLE:

Ext. Al (Clear Anodized)
 1" x 1" CRS Painted

ACCESSORIES:

JV3 Overlapping Type
 V3 Underlapping Type

ELEMENT:

TYPE: Cu/Al (Mechanically Expanded)

LENGTHS: 2'0" thru 12'6" in 1" Increments for 1" & 1-1/4" Cu.
2'0" thru 8'0" in 1" Increments for 3/4" Cu.

One End Flared, (Std)

TYPE: IPS Steel (Mechanically Expanded)

LENGTHS: 2'0" Thru 12'0" in 1" Increments
 NPT Thread both Ends (Std)
 Beveled Ends for Field Weld

See Catalog for Working Pressures

V3 Wiped Edge Enclosure

BACKPLATE:

TYPE: Partial B/P

LENGTHS: 8'0" Only

MAT'L: 20 Ga. Prepainted (Std)
 18 Ga. Galvannealed (Opt'l)

TYPE: Full Ht. B/P (Opt'l)

LENGTHS: 2'0" thru 8'0" in 6" Increments

MAT'L: 20 Ga. Galvannealed (Opt'l)
 20 Ga. Painted (Opt'l)
 18 Ga. Painted (Opt'l)

AIRSEAL:

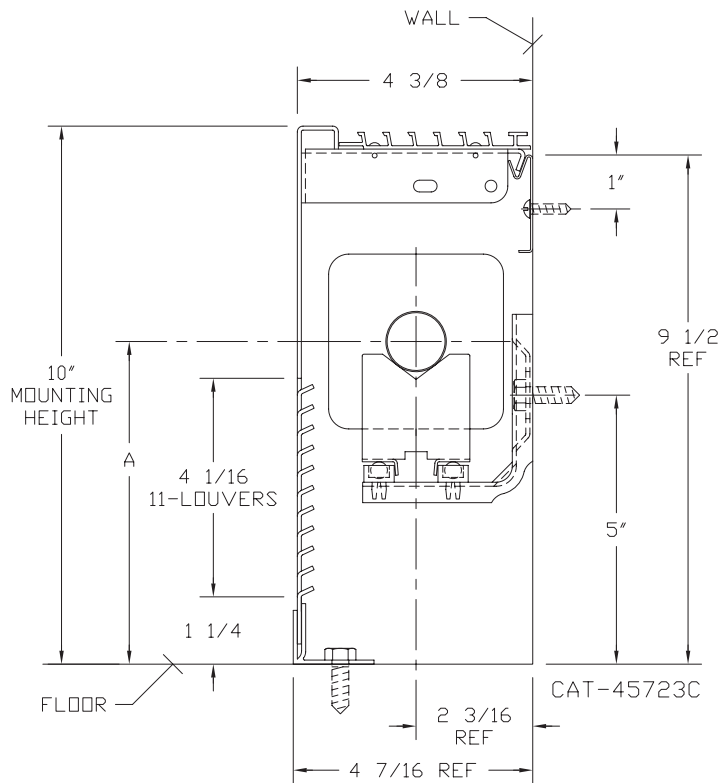
1/8" x 3/8" Closed Cell (Opt'l)

BRACKETS:

B.B. Hgr Wall Mtd. 3

DAMPER: Not Available

JV3/V3-AR10LI
(JV3 Shown)



| ELEMENT TUBE SIZE | FIN SIZE HEIGHT x WIDTH | CRADLE NUMBER | A |
|-------------------|-------------------------|---------------|---------|
| 3/4 COPPER | 3 1/4 x 3 1/4 | 2 | 5 13/16 |
| 1" COPPER | 3 1/4 x 3 1/4 | 2 | 6" |
| 1 1/4 COPPER | 3 1/4 x 3 1/4 | 1 | 5 7/16 |
| 1" STEEL | 3 1/4 x 3 1/4 | 2 | 6 1/8 |
| 1 1/4 STEEL | 3 1/4 x 3 1/4 | 1 | 5 5/8 |

Vulcan
R A D I A T O R

260 North Elm St., Westfield, MA 01085
(413) 568-9571 Fax: (413) 564-5661
www.vulcanrad.com



PROJECT: _____ DATE: _____
LOCATION: _____
ARCHITECT: _____
ENGINEER: _____
CONTRACTOR: _____
PO NUMBER: _____

STYLE JV3/V3-AR10LI

COPPER/ALUMINUM ELEMENT RATINGS

ALL RATINGS ARE BASED ON 3 FPS WATER VELOCITY, 65° EAT.

| TUBE SIZE | VCATALOG DESIGNATION | FIN SIZE HEIGHT X WIDTH | FIN PER FT. | FIN THICKNESS | ENVCL. HEIGHT | TIERS OF ELEMENT | MTG. HEIGHT | STEAM RATING 215°F, 65°F E.A.T. BTU/FT/HR | HOT WATER RATINGS BTU/FT/HR AWT | | | | | | |
|-----------|----------------------|-------------------------|-------------|---------------|---------------|------------------|-------------|---|---------------------------------|------|------|------|------|------|------|
| | | | | | | | | | 180° | 170° | 160° | 150° | 140° | 130° | 120° |
| | | | | | | | | | 0.69 | 0.61 | 0.53 | 0.45 | .40 | .33 | .26 |
| 3/4" | VC3/4-33 | 3-1/4" SQ. | 32 | .020 | 10" | 1 | 10" | 780 | 540 | 480 | 410 | 350 | 310 | 260 | 200 |
| 3/4" | VC3/4-34 | 3-1/4" SQ. | 40 | .020 | 10" | 1 | 10" | 950 | 660 | 580 | 500 | 430 | 380 | 310 | 250 |
| 3/4" | VC3/4-35 | 3-1/4" SQ. | 50 | .020 | 10" | 1 | 10" | 960 | 660 | 590 | 510 | 430 | 380 | 320 | 250 |
| 1" | VC33 | 3-1/4" SQ. | 32 | .020 | 10" | 1 | 10" | 800 | 550 | 490 | 420 | 360 | 320 | 260 | 210 |
| 1" | VC34 | 3-1/4" SQ. | 40 | .020 | 10" | 1 | 10" | 920 | 630 | 560 | 490 | 410 | 370 | 300 | 240 |
| 1" | VC35 | 3-1/4" SQ. | 50 | .020 | 10" | 1 | 10" | 930 | 640 | 570 | 490 | 420 | 370 | 310 | 240 |
| 1 1/4" | VC133 | 3-1/4" SQ. | 32 | .020 | 10" | 1 | 10" | 770 | 530 | 470 | 410 | 350 | 310 | 250 | 200 |
| 1 1/4" | VC134 | 3-1/4" SQ. | 40 | .020 | 10" | 1 | 10" | 880 | 610 | 540 | 470 | 400 | 350 | 290 | 230 |
| 1 1/4" | VC135 | 3-1/4" SQ. | 50 | .020 | 10" | 1 | 10" | 890 | 610 | 540 | 470 | 400 | 360 | 290 | 230 |

STEEL ELEMENT RATINGS*

ALL RATINGS ARE BASED ON 3 FPS WATER VELOCITY, 65° EAT.

| I.P.S. SIZE | CATALOG DESIGNATION | FIN SIZE HEIGHT X WIDTH | FIN PER FT. | FIN THICKNESS | ENCL. HEIGHT | TIERS OF ELEMENT | MTG. HEIGHT | STEAM RATING 215°F, 65°F E.A.T. BTU/FT/HR | HOT WATER RATINGS BTU/FT/HR AWT | | | | | | |
|-------------|---------------------|-------------------------|-------------|---------------|--------------|------------------|-------------|---|---------------------------------|------|------|------|------|------|------|
| | | | | | | | | | 180° | 170° | 160° | 150° | 140° | 130° | 120° |
| | | | | | | | | | 0.69 | 0.61 | 0.53 | 0.45 | .40 | .33 | .26 |
| 1" | VS33 | 3-1/4" SQ. | 32 | .032 | 10" | 1 | 10" | 740 | 510 | 450 | 390 | 330 | 300 | 240 | 190 |
| 1" | VS34 | 3-1/4" SQ. | 40 | .032 | 10" | 1 | 10" | 815 | 560 | 500 | 430 | 370 | 330 | 270 | 210 |
| 1" | VS35 | 3-1/4" SQ. | 50 | .032 | 10" | 1 | 10" | 855 | 590 | 520 | 450 | 380 | 340 | 280 | 220 |
| 1-1/4" | VS133 | 3-1/4" SQ. | 32 | .032 | 10" | 1 | 10" | 730 | 500 | 450 | 390 | 330 | 290 | 240 | 190 |
| 1-1/4" | VS134 | 3-1/4" SQ. | 40 | .032 | 10" | 1 | 10" | 825 | 570 | 500 | 440 | 370 | 330 | 270 | 210 |
| 1-1/4" | VS135 | 3-1/4" SQ. | 50 | .032 | 10" | 1 | 10" | 840 | 580 | 510 | 450 | 380 | 340 | 280 | 220 |

* Male NPT threads furnished on steel elements. Please use domestic fittings for proper installation.