

# LINOVECTOR II

Bare Element "SP"  
Copper/Aluminum and  
Steel Elements

## Submittal

# Specification

### ELEMENT:

TYPE:  Cu/Al (Mechanically Expanded)  
LENGTHS: 2'-0" thru 12'-6" in 1" Increments  
One end Flared Std.  
See Catalog for Working Pressures

### BRACKETS:

B.B. Hanger Wall Mounted

### Bare Element

3-3/4" Wide B.B HGR Wall 4  
 5" Wide B.B HGR Wall SP

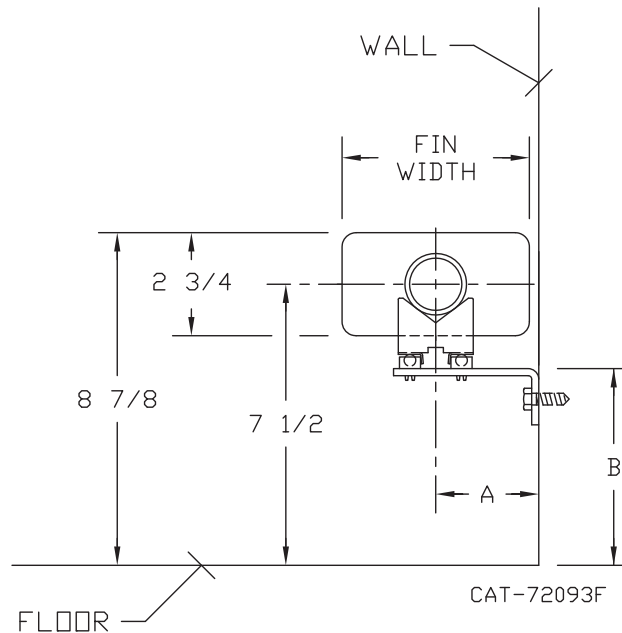
### ELEMENT:

TYPE:  Steel (Mechanically Expanded)  
LENGTHS: 2'-0" thru 12'-6" in 1" Increments  
 N.P.T. Threads Both Ends Std.  
 Beveled Ends for Field Welded Fittings  
See Catalog for Working Pressures

### BRACKETS:

B.B. Hanger Wall Mounted

TUBE SIZE	FIN WIDTH	A	B	CRADLE NUMBER
3/4 COPPER	3 3/4	2 1/8	5 1/16	2
1" COPPER	3 3/4	2 1/8	5 9/16	1
	5"	2 3/4		
1 1/4 COPPER	3 3/4	2 1/8	5 7/16	1
	5"	2 3/4		
1" STEEL	3 3/4	2 1/8	5 7/16	1
	5"	2 3/4		
1 1/4 STEEL	5"	2 3/4	5 1/4	1



### NOTE:

- ELEMENT SUPPORT ASS'Y  
3 3/4 WIDE FIN 76369-001  
5" WIDE FIN 76369-002

# Vulcan

RADIATOR

260 North Elm St., Westfield, MA 01085  
(413) 568-9571 Fax: (413) 564-5661  
www.vulcanrad.com

PROJECT: \_\_\_\_\_ DATE: \_\_\_\_\_

LOCATION: \_\_\_\_\_

ARCHITECT: \_\_\_\_\_

ENGINEER: \_\_\_\_\_

CONTRACTOR: \_\_\_\_\_

PO NUMBER: \_\_\_\_\_

# BARE ELEMENT "SP"

## COPPER/ALUMINUM ELEMENT RATINGS

TUBE SIZE	CATALOG DESIGNATION	FIN SIZE HEIGHT X WIDTH	FIN PER FT.	FIN THICKNESS IN INCHES	TIERS AND CENTERS IN INCHES	MTG. HEIGHT IN INCHES	STEAM 215° FACTOR	HOT WATER (AVG.)											
								200°	190°	180°	170°	160°	150°	140°	130°	120°	110°	100°	
								CORRECTION FACTORS FOR AVERAGE WATER TEMPERATURES											
								1.00	.86	.78	.69	.61	.53	.45	.40	.33	.26	.20	.15
3/4"	VR04R	2-3/4" x 3-3/4"	50	<i>.0135</i>	1	8-7/8	1280	1100	1000	880	780	680	580	510	420	330	260	190	
						2	2190	1880	1710	1510	1340	1160	990	880	720	570	440	330	
						3	3000	2580	2340	2070	1830	1590	1350	1200	990	780	600	450	
1"	VR05R	2-3/4" x 3-3/4"	50	<i>.011</i>	1	8-7/8	1270	1090	990	880	770	670	570	510	420	330	250	190	
						2	2180	1870	1700	1500	1330	1160	980	870	720	570	440	330	
						3	2980	2560	2320	2060	1820	1580	1340	1190	980	770	600	450	
1"	VR07R	2-3/4" x 5"	50	<i>.020</i>	1	8-7/8	1610	1380	1260	1110	980	850	720	640	530	420	320	240	
						2	2540	2180	1980	1750	1550	1350	1140	1020	840	660	510	380	
						3	3310	2850	2580	2280	2020	1750	1490	1320	1090	860	660	500	
1-1/4"	VR08R	2-3/4" x 3-3/4"	50	<i>.020</i>	1	8-7/8	1250	1080	980	860	760	660	560	500	410	330	250	190	
						2	1980	1700	1540	1370	1210	1050	890	790	650	510	400	300	
						3	2620	2250	2040	1810	1600	1390	1180	1050	860	680	520	390	
1-1/4"	VR10R	2-3/4" x 5"	50	<i>.020</i>	1	8-7/8	1600	1380	1250	1100	980	850	720	640	530	420	320	240	
						2	2530	2180	1970	1750	1540	1340	1140	1010	830	660	510	380	
						3	3310	2850	2580	2280	2020	1750	1490	1320	1090	860	660	500	

Note: Copper tube furnished flared one end standard.

## STEEL ELEMENT RATINGS

I.P.S. SIZE	CATALOG DESIGNATION	FIN SIZE HEIGHT X WIDTH	FIN PER FT.	FIN THICKNESS IN INCHES	TIERS AND CENTERS IN INCHES	MTG. HEIGHT IN INCHES	STEAM 215° FACTOR	HOT WATER (AVG.)										
								200°	190°	180°	170°	160°	150°	140°	130°	120°	110°	100°
								CORRECTION FACTORS FOR AVERAGE WATER TEMPERATURES										
							1.00	.86	.78	.69	.61	.53	.45	.40	.33	.26	.20	.15
1"	VR15R	2-3/4" x 5"	50	<i>0.024</i>	1	8-7/8	1140	980	890	790	700	600	510	460	380	300	230	170
						2	2010	1730	1570	1390	1230	1070	900	800	660	520	400	300
						3	2810	2420	2190	1940	1710	1490	1260	1120	930	730	560	420
1-1/4"	VR16R	2-3/4" x 5"	50	<i>0.024</i>	1	8-7/8	1170	1010	910	810	710	620	530	470	390	300	230	180
						2	2040	1750	1590	1410	1240	1080	920	820	670	530	410	310
						3	2830	2430	2210	1950	1730	1500	1270	1130	930	740	570	420

- Notes: 1) Steel fins furnished as .024 thick, painted black.  
 2) NPT threads furnished on steel elements. Please use domestic fittings for proper installation.  
 3) The ends can be provided chamfered for field welded fittings when specified.

► **Bold, italicized units are**  **rated** ◀