

LINOVECTOR II

Bare Element "3"
Copper/Aluminum and
Steel Elements

Submittal

Specification

Bare Element "3"

ELEMENT:

TYPE: Cu/Al (Mechanically Expanded)

LENGTHS: 2'-0" thru 12'-6" in 1" Increments
3/4" Cu Tube Available up to 8'-0" MAX.
One end Flared Std.
See Catalog for Working Pressures

BRACKETS:

B.B. Hanger Wall Mounted

ELEMENT:

TYPE: Steel (Mechanically Expanded)

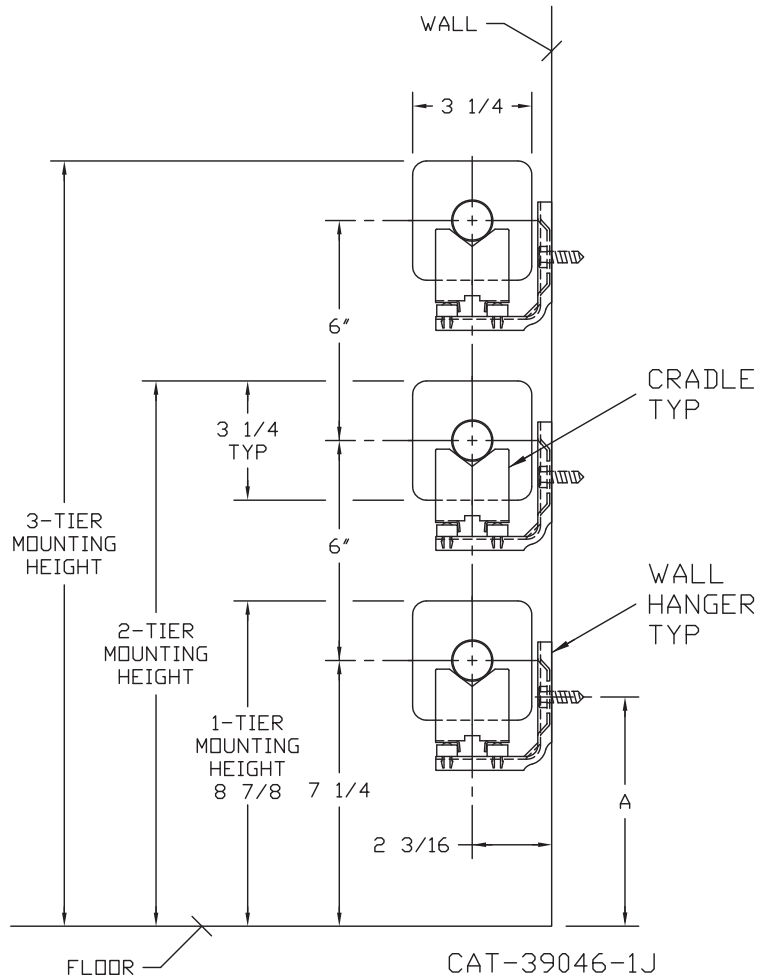
LENGTHS: 2'-0" thru 12'-6" in 1" Increments
 N.P.T. Threads Both Ends Std.
 Beveled Ends for Field Welded Fittings
See Catalog for Working Pressures

BRACKETS:

B.B. Hanger Wall Mounted

Bare Element "3" – 3-1/4" Wide Fin B.B. Hanger Wall "3"

ELEMENT TUBE SIZE	CRADLE NUMBER	A
3/4" COPPER	2	6 3/8
1" COPPER	2	6 1/4
1 1/4" COPPER	1	6 3/4
1" STEEL	2	6 1/8
1 1/4" STEEL	1	6 5/8



260 North Elm St., Westfield, MA 01085
(413) 568-9571 Fax: (413) 564-5661
www.vulcanrad.com

PROJECT: _____ DATE: _____
 LOCATION: _____
 ARCHITECT: _____
 ENGINEER: _____
 CONTRACTOR: _____
 PO NUMBER: _____

STYLE "3" BARE ELEMENT

COPPER/ALUMINUM ELEMENT RATINGS

All ratings are based on 3 FPS velocity

I.P.S. SIZE	CATALOG DESIGNATION	FIN SIZE HEIGHT X WIDTH	FIN PER FT.	FIN THICKNESS IN INCHES	TIERS AND CENTERS IN INCHES	MTG. HEIGHT IN INCHES	STEAM 215° FACTOR	HOT WATER (AVG.)											
								200°	190°	180°	170°	160°	150°	140°	130°	120°	110°	100°	
								CORRECTION FACTORS FOR AVERAGE WATER TEMPERATURES											
								1.00	.86	.78	.69	.61	.53	.45	.40	.33	.26	.20	.15
3/4"	VC3/4-33	3-1/4" SQ.	32	.020	1 2 @ 6 CL 3 @ 6 CL	8-7/8 14-7/8 20-7/8	970	830	760	670	590	510	440	390	320	250	190	150	
							1720	1480	1340	1190	1050	910	770	690	570	450	340	260	
3/4"	VC3/4-34	3-1/4" SQ.	40	.020	1 2 @ 6 CL 3 @ 6 CL	8-7/8 14-7/8 20-7/8	1140	980	890	790	700	600	510	460	380	300	230	170	
							1880	1620	1470	1300	1150	1000	850	750	620	490	380	280	
3/4"	VC3/4-35	3-1/4" SQ.	50	.020	1 2 @ 6 CL 3 @ 6 CL	8-7/8 14-7/8 20-7/8	1260	1080	980	870	770	670	570	500	420	330	250	190	
							2010	1730	1570	1390	1230	1070	900	800	660	520	400	300	
1"	VC33	3-1/4" SQ.	32	.020	1 2 @ 6 CL 3 @ 6 CL	8-7/8 14-7/8 20-7/8	970	830	760	670	590	510	440	390	320	250	190	150	
							1720	1480	1340	1190	1050	910	770	690	570	450	340	260	
1"	VC34	3-1/4" SQ.	40	.020	1 2 @ 6 CL 3 @ 6 CL	8-7/8 14-7/8 20-7/8	1080	930	840	750	660	570	490	430	360	280	220	160	
							1850	1590	1440	1280	1130	980	830	740	610	480	370	280	
1"	VC35	3-1/4" SQ.	50	.020	1 2 @ 6 CL 3 @ 6 CL	8-7/8 14-7/8 20-7/8	1210	1040	940	830	740	640	540	480	400	310	240	180	
							1940	1670	1510	1340	1180	1030	870	780	640	500	390	290	
1-1/4"	VC133	3-1/4" SQ.	32	.020	1 2 @ 6 CL 3 @ 6 CL	8-7/8 14-7/8 20-7/8	970	830	760	670	590	510	440	390	320	250	190	150	
							1680	1440	1310	1160	1020	890	760	670	550	440	340	250	
1-1/4"	VC134	3-1/4" SQ.	40	.020	1 2 @ 6 CL 3 @ 6 CL	8-7/8 14-7/8 20-7/8	1060	910	830	730	650	560	480	420	350	280	210	160	
							1840	1580	1440	1270	1120	980	830	740	610	480	370	280	
1-1/4"	VC135	3-1/4" SQ.	50	.020	1 2 @ 6 CL 3 @ 6 CL	8-7/8 14-7/8 20-7/8	1170	1010	910	810	710	620	530	470	390	300	230	180	
							1900	1630	1480	1310	1160	1010	860	760	630	490	380	290	

Note: Copper tube furnished flared one end standard.

STEEL ELEMENT RATINGS

All ratings are based on 3 FPS velocity

I.P.S. SIZE	CATALOG DESIGNATION	FIN SIZE HEIGHT X WIDTH	FIN PER FT.	FIN THICKNESS IN INCHES	TIERS AND CENTERS IN INCHES	MTG. HEIGHT IN INCHES	STEAM 215° FACTOR	HOT WATER (AVG.)											
								200°	190°	180°	170°	160°	150°	140°	130°	120°	110°	100°	
								CORRECTION FACTORS FOR AVERAGE WATER TEMPERATURES											
								1.00	.86	.78	.69	.61	.53	.45	.40	.33	.26	.20	.15
1"	VS33	3-1/4" SQ.	32	.032	1	8-7/8"	910	780	710	630	560	480	410	360	300	240	180	140	
					2 @ 6 CL	14-7/8"	1580	1360	1230	1090	960	840	710	630	520	410	320	240	
					3 @ 6 CL	20-7/8"	2200	1890	1720	1520	1340	1170	990	880	730	570	440	330	
1"	VS34	3-1/4" SQ.	40	.032	1	8-7/8"	990	850	770	680	600	520	450	400	330	260	200	150	
					2 @ 6 CL	14-7/8"	1700	1460	1330	1170	1040	900	770	680	560	440	340	260	
					3 @ 6 CL	20-7/8"	2350	2020	1830	1620	1430	1250	1060	940	780	610	470	350	
1"	VS35	3-1/4" SQ.	50	.032	1	8-7/8"	1060	910	830	730	650	560	480	420	350	280	210	160	
					2 @ 6 CL	14-7/8"	1790	1540	1400	1240	1090	950	810	720	590	470	360	270	
					3 @ 6 CL	20-7/8"	2450	2110	1910	1690	1490	1300	1100	980	810	640	490	370	
1-1/4"	VS133	3-1/4" SQ.	32	.032	1	8-7/8"	900	770	700	620	550	480	410	360	300	230	180	140	
					2 @ 6 CL	14-7/8"	1620	1390	1260	1120	990	860	730	650	530	420	320	240	
					3 @ 6 CL	20-7/8"	2240	1930	1750	1550	1370	1190	1010	900	740	580	450	340	
1-1/4"	VS134	3-1/4" SQ.	40	.032	1	8-7/8"	1000	860	780	690	610	530	450	400	330	260	200	150	
					2 @ 6 CL	14-7/8"	1700	1460	1330	1170	1040	900	770	680	560	440	340	260	
					3 @ 6 CL	20-7/8"	2250	1940	1760	1550	1370	1190	1010	900	740	590	450	340	
1-1/4"	VS135	3-1/4" SQ.	50	.032	1	8-7/8"	1030	890	800	710	630	550	460	410	340	270	210	150	
					2 @ 6 CL	14-7/8"	1750	1510	1370	1210	1070	930	790	700	580	460	350	260	
					3 @ 6 CL	20-7/8"	2280	1960	1780	1570	1390	1210	1030	910	750	590	460	340	

- Notes: 1) Steel fins furnished as .032 thick, painted black.
 2) NPT threads furnished on steel elements. Please use domestic fittings for proper installation.
 3) The ends can be provided chamfered for field welded fittings when specified.