

# LINOVECTOR II

Bare Element "2"  
Copper/Aluminum and  
Steel Elements

## Submittal

# Specification

### □ Bare Element "2"

#### ELEMENT:

TYPE:  Cu/Al (Mechanically Expanded)  
LENGTHS: 2'-0" thru 8'-0" in 12" Increments  
One end Flared Std.  
See Catalog for Working Pressures

#### BRACKETS:

B.B. Hanger Wall Mounted

#### ELEMENT:

TYPE:  Steel (Mechanically Expanded)  
LENGTHS: 2'-0" thru 12'-6" in 1" Increments  
 N.P.T. Threads Both Ends Std.  
 Beveled Ends for Field Welded Fittings  
See Catalog for Working Pressures

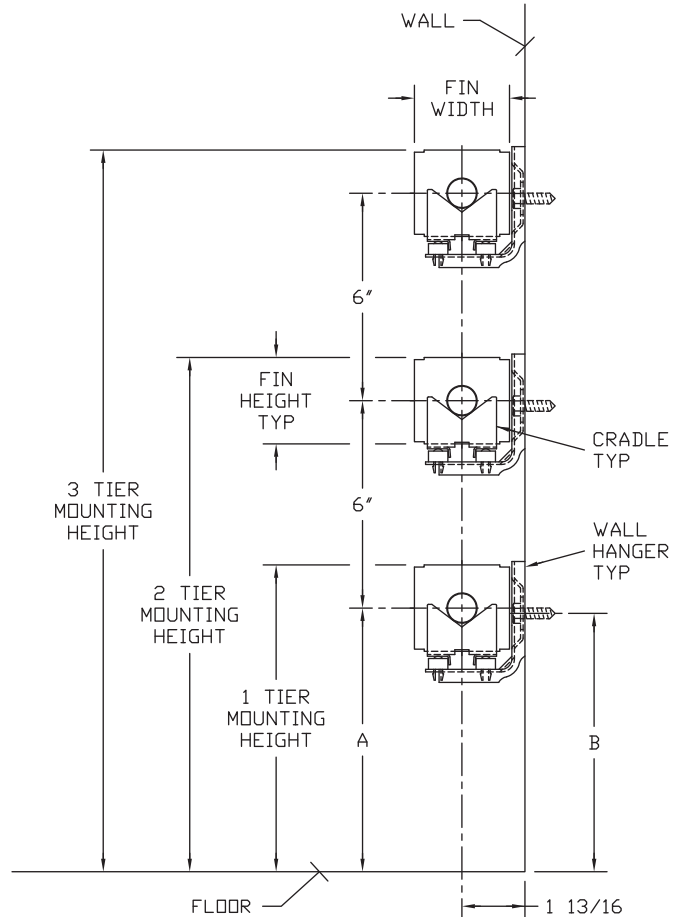
#### BRACKETS:

B.B. Hanger Wall Mounted

### Bare Element "2"

- 2-1/4" Wide Fin B.B. Hanger Wall "2"
- 2-3/4" Wide Fin B.B. Hanger Wall "2"

TUBE SIZE	FIN SIZE HEIGHT x WIDTH	CRADLE NUMBER	A	B	1 TIER MOUNTING HEIGHT
3/4 COPPER	2 1/2 x 2 1/4	1	7 5/8	7 1/2	8 7/8
	2 1/2 x 2 3/4	1			
	3 3/4 x 2 3/4	2	7"	6 3/16	
1" COPPER	2 1/2 x 2 3/4	1	7 5/8	7 5/16	10"
	3 3/4 x 2 3/4	2	7"	6"	
	5" x 2 3/4	3A	7 1/2	6 1/8	
1 1/4 COPPER	3 3/4 x 2 3/4	2	7"	5 7/8	8 7/8
	5" x 2 3/4	3A	7 1/2	5 15/16	10"
1" STEEL	3 3/4 x 2 3/4	2	7"	5 7/8	8 7/8
	5" x 2 3/4	3A	7 1/2	6"	10"
1 1/4 STEEL	3 3/4 x 2 3/4	2	7"	5 11/16	8 7/8
	5" x 2 3/4	3A	7 1/2	5 3/4	10"



CAT-69647-1B

# Vulcan

RADIATOR

260 North Elm St., Westfield, MA 01085  
(413) 568-9571 Fax: (413) 564-5661  
www.vulcanrad.com

PROJECT: \_\_\_\_\_ DATE: \_\_\_\_\_  
LOCATION: \_\_\_\_\_  
ARCHITECT: \_\_\_\_\_  
ENGINEER: \_\_\_\_\_  
CONTRACTOR: \_\_\_\_\_  
PO NUMBER: \_\_\_\_\_

# STYLE "2" BARE ELEMENT

## COPPER/ALUMINUM ELEMENTS

I.P.S. SIZE	CATALOG DESIGNATION	FIN SIZE HEIGHT X WIDTH	FIN PER FT.	FIN THICKNESS IN INCHES	TIERS AND CENTERS IN INCHES	MTG. HEIGHT IN INCHES	STEAM 215° FACTOR	HOT WATER (AVG.)											
								200°	190°	180°	170°	160°	150°	140°	130°	120°	110°	100°	
								CORRECTION FACTORS FOR AVERAGE WATER TEMPERATURES											
1.00	.86	.78	.69	.61	.53	.45	.40	.33	.26	.20	.15								
3/4"	VR01	2-1/2" x 2-1/4"	50	.011	1 2 @ 6 CL 3 @ 6 CL	8-7/8" 14-7/8" 20-7/8"	800	690	620	550	490	420	360	320	260	210	160	120	
							1370	1180	1070	950	840	730	620	550	450	360	270	210	
3/4"	VR02	2-1/2" x 2-3/4"	60	.010	1 2 @ 6 CL 3 @ 6 CL	8-7/8" 14-7/8" 20-7/8"	950	820	740	660	580	500	430	380	310	250	190	140	
							1630	1400	1270	1120	990	860	730	650	540	420	330	240	
3/4"	VR04	3-3/4" x 2-3/4"	50	.0135	1 2 @ 6 CL 3 @ 6 CL	8-7/8" 14-7/8" 20-7/8"	1130	970	880	780	690	600	510	450	370	290	230	170	
							1930	1660	1510	1330	1180	1020	870	770	640	500	390	290	
1"	VR03	2-1/2" x 2-3/4"	55	.011	1 2 @ 6 CL 3 @ 6 CL	8-7/8" 14-7/8" 20-7/8"	930	800	730	640	570	490	420	370	310	240	190	140	
							1610	1380	1260	1110	980	850	720	640	530	420	320	240	
1"	VR05	3-3/4" x 2-3/4"	50	.0135	1 2 @ 6 CL 3 @ 6 CL	8-7/8" 14-7/8" 20-7/8"	1120	960	870	770	680	590	500	450	370	290	220	170	
							1910	1640	1490	1320	1170	1010	860	760	630	500	380	290	
1"	VR07	5" x 2-3/4"	50	.020	1 2 @ 6 CL 3 @ 6 CL	10" 16" 22"	1260	1080	980	870	770	670	570	500	420	330	250	190	
							2100	1810	1640	1450	1280	1110	950	840	690	550	420	320	
1-1/4"	VR08	3-3/4" x 2-3/4"	50	.020	1 2 @ 6 CL 3 @ 6 CL	8-7/8" 14-7/8" 20-7/8"	1070	920	830	740	650	570	480	430	350	280	210	160	
							1830	1570	1430	1260	1120	970	820	730	600	480	370	270	
1-1/4"	VR10	5" x 2-3/4"	50	.020	1 2 @ 6 CL 3 @ 6 CL	10" 16" 22"	1230	1060	960	850	750	650	550	490	410	320	250	180	
							2070	1780	1610	1430	1260	1100	930	830	680	540	410	310	
							2850	2450	2220	1970	1740	1510	1280	1140	940	740	570	430	

Note: Copper tube furnished flared one end standard.

## STEEL ELEMENTS

I.P.S. SIZE	CATALOG DESIGNATION	FIN SIZE HEIGHT X WIDTH	FIN PER FT.	FIN THICKNESS IN INCHES	TIERS AND CENTERS IN INCHES	MTG. HEIGHT IN INCHES	STEAM 215° FACTOR	HOT WATER (AVG.)											
								200°	190°	180°	170°	160°	150°	140°	130°	120°	110°	100°	
								CORRECTION FACTORS FOR AVERAGE WATER TEMPERATURES											
1.00	.86	.78	.69	.61	.53	.45	.40	.33	.26	.20	.15								
1"	VR11	3-3/4" x 2-3/4"	40	.024	1 2 @ 6 CL 3 @ 6 CL	8-7/8" 14-7/8" 20-7/8"	880	760	690	610	540	470	400	350	290	230	180	130	
							1540	1320	1200	1060	940	820	690	620	510	400	310	230	
1"	VR15	5" x 2-3/4"	50	.024	1 2 @ 6 CL 3 @ 6 CL	10" 16" 22"	940	810	730	650	570	500	420	380	310	240	190	140	
							1630	1400	1270	1120	990	860	730	650	540	420	330	240	
1-1/4"	VR16	5" x 2-3/4"	50	.024	1 2 @ 6 CL 3 @ 6 CL	10" 16" 22"	960	830	750	660	590	510	430	380	320	250	190	140	
							1650	1420	1290	1140	1010	870	740	660	540	430	330	250	
							2280	1960	1780	1570	1390	1210	1030	910	750	590	460	340	

- Notes: 1) Steel fins furnished as .024 thick painted black  
 2) NPT threads furnished on steel elements. Please use domestic fittings for proper installation.  
 3) The ends can be provided chamfered for field welded fittings when specified.