

ENGINEERED PRODUCTS

Model - MS(12) (A, B)† G

Unit Type (UT) - MS, Separated Combustion Indoor Unit
Capacity (CA) - (12) (1,200 mBTU)
Furnace Type (FT) - A, B Standard Temperature Rise (30-80)F°
Indoor Arrangement (IA) - G, High CFM Blower Unit

Performance Table

Model Digits 3, 4, & 5 CA, FT	TR (°F)	CFM	Input BTU/Hr.		Max. Output BTU/Hr.	TOTAL STATIC PRESSURE (INCHES OF WATER)											
			Max.	Min.		0.4		0.8		1		1.4		1.8		2	
						RPM	BHP	RPM	BHP	RPM	BHP	RPM	BHP	RPM	BHP	RPM	BHP
	197	4,500				660	1.26	785	1.75	840	2.01	945	2.55	1035	3.12	1080	3.43
	177	5,000				700	1.60	820	2.14	875	2.42	975	2.99	1065	3.60	1105	3.91
	147	6,000				790	2.46	895	3.10	945	3.43	1035	4.09	1120	4.77	1160	5.12
12A/B	126	7,000	1,200,000	480,000	960,000	885	3.63	980	4.36	1025	4.74	1110	5.49	1185	6.26	1225	6.65
	111	8,000				985	5.15	1065	5.95	1105	6.38	1185	7.24	1260	8.10	1295	8.54
	98	9,000				1080	7.07	1160	7.94	1195	8.40	1265	9.36	1335	10.33	1370	10.81
	90	9,800				1165	8.93	1235	9.85	1265	10.34	1335	11.36	1400	12.41	1430	12.94

NOTES: The pressure drop for Accessories from the following table, must be allowed for when using the above Performance table.
Unless otherwise specified, the following conversions may be used for calculating SI units.
1 Cu. Ft. = 0.028m³, 1 ft. = 0.305m, 1 in. = 25.4mm, 1 psig = 6.894 kPa, 1000 Btu per hr. = 0.293 kW,
1 in. water column = 0.249 kPa, 1 gallon = 3.785 L, 1000 Btu/Cu. Ft. = 37.5 MJ/m³, 1 lb. = 0.453 kg.

Accessories Pressure Drop Table

CAPACITY	CFM	PRESSURE LOSS (INCHES OF WATER)								OUTSIDE OR RETURN DAMPER
		RAINHOOD WITH		THROWAWAY	FILTERS			PLEATED		
		SCREEN	MSTR. ELIM		2"	1"	2"		1"	
	4,500	.06	.09	.05	<.01	<.01	.05	.03	.08	
	5,000	.08	.11	.05	<.01	.01	.06	.03	.10	
	6,000	.11	.15	.07	.01	.02	.08	.04	.15	
12	7,000	.16	.21	.08	.02	.02	.10	.06	.20	
	8,000	.20	.27	.10	.02	.03	.13	.07	.26	
	9,000	.26	.35	.12	.03	.04	.16	.09	.33	
	9,800	.31	.41	.13	.03	.05	.18	.11	.39	

Project: _____

Unit Tag: _____



260 NORTH ELM ST. WESTFIELD, MA 01085
(413) 564-5540 • FAX: (413) 562-5311

www.sterlinghvac.com A MESTEK COMPANY

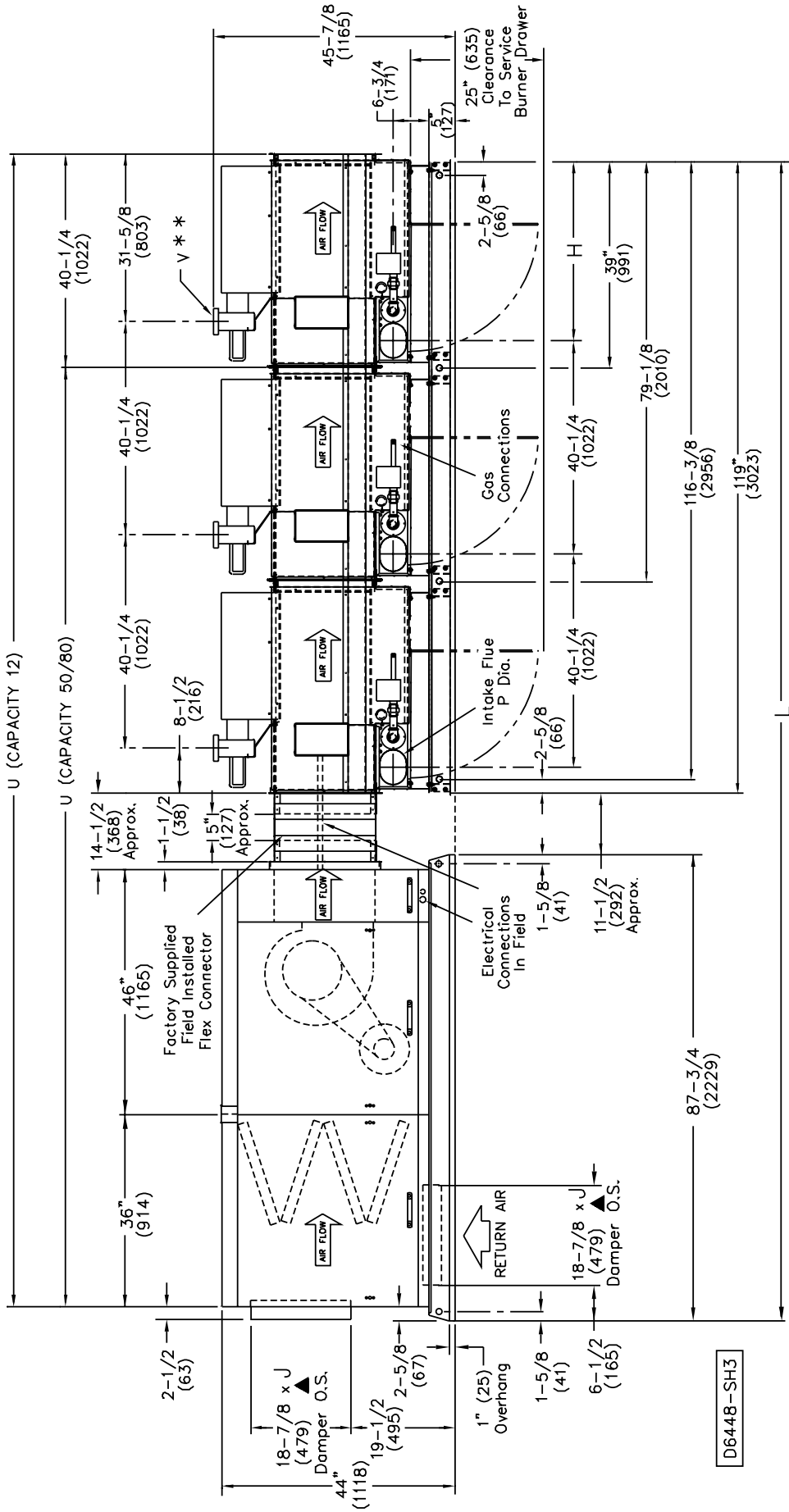
The above dimensional drawing includes options that might not pertain to the unit being submitted for approval. Please note that the following items checked below are **not included** with the unit being submitted:

- Outside Air Opening / Dampers
- Return Air Openings / Dampers

ENGINEERED PRODUCTS

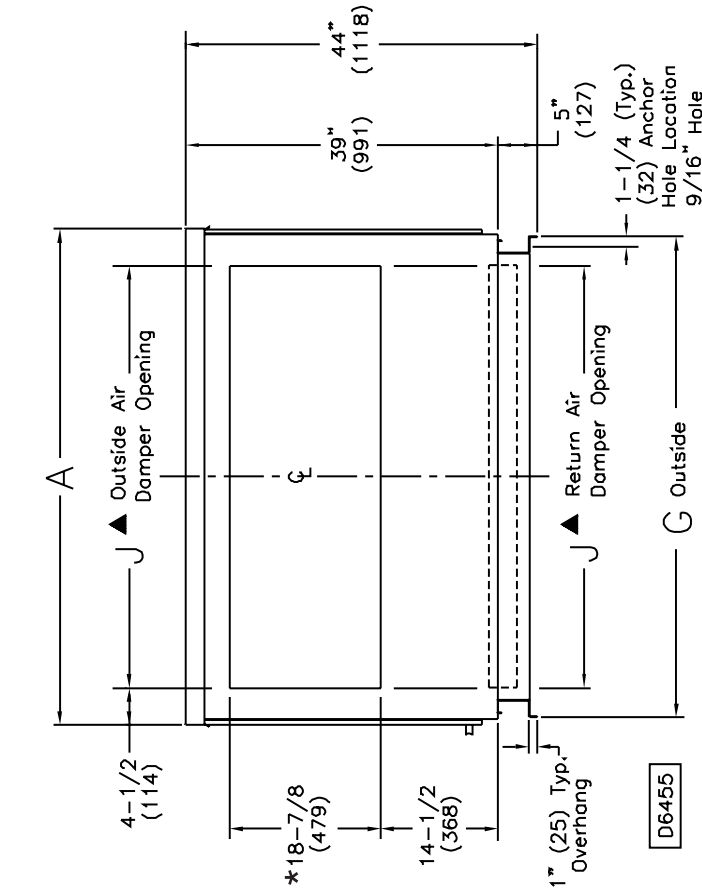
Model - MS(12) (A, B)† G

Unit Type (UT) - MS, Separated Combustion Indoor Unit
 Capacity (CA) - (50-80) (500-800 mBTU)
 Furnace Type (FT) - A, B Standard Temperature Rise (30-80)F°
 Indoor Arrangement (IA) - G, High CFM Blower Unit

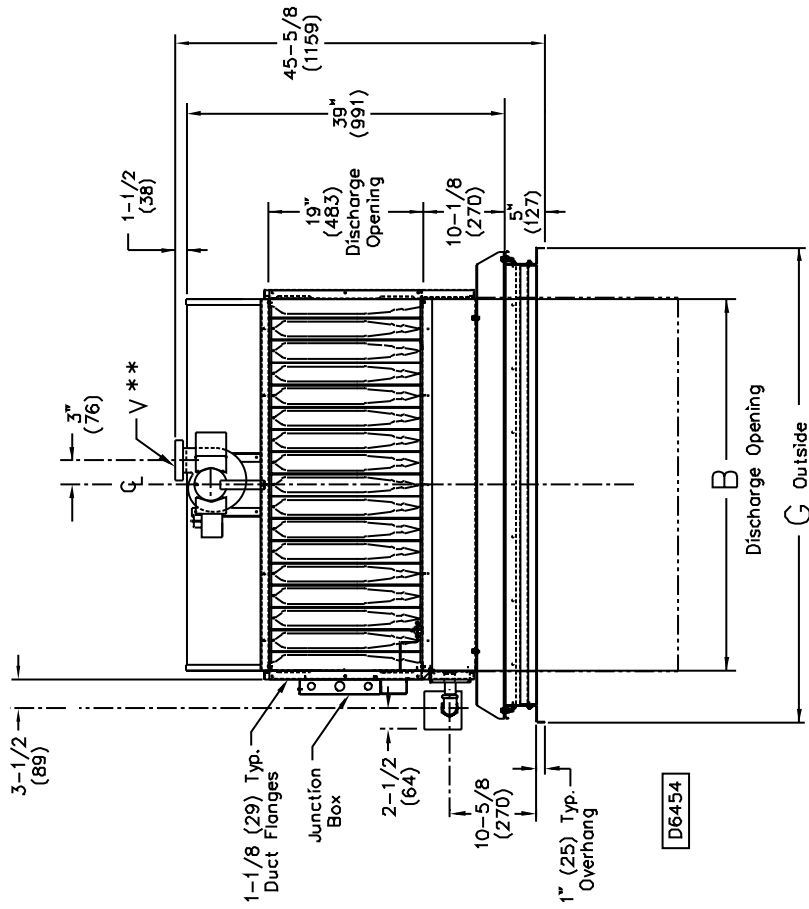


D6448-SH3

Intake Air End View



Discharge End View



Capacity	GAS INLET												
	A	B	C	D	G	H	J▲	L	U	P*	V Dia.**	NAT	LP
□ 12	60-3/8 (1534)	45-13/16 (1164)	30-3/16 (767)	33-1/8 (841)	58-9/16 (1487)	36-11/16 (932)	51-1/2 (1308)	218-1/4 (5544)	217 (5512)	6 OV (152)	6 (152)	3/4	1/2 OR 3/4

NOTE:

Dimensions are in inches, dimensions in parenthesis are in millimeters. ▲"J" dimension is an outside dimension for air dampers.
 *This is an outside damper dimension. *OV = Oval
 **The 5" to 6" flue adapter is supplied by the manufacturer.



MS(12) (A, B)† G Weights & Filter Data

Unit Weights

Approximate weights for Arrangement "G"†			
Unit Type	Net Wt.†	Ship Wt.†	Add for
Capacity	(Lb.)	(Lb.)	Outside Air Hood
MS12	2420	2741	63

Filter Data

Capacity	(Quantity) Filter Size
12	(12) 20 x 20

Conversion 1 lb. = 0.453 kg.

†The approximate net and shipping weights shown are for a basic unit (these weights do not include the motor or any options). For the motor weight; see motor specifications sheet #MDS-1 for these weights/amperages.

MODEL NUMBER

	1	2	3	4	5	6	7	8	9	10	11	12	13	14	15	16	+
(MXX)	M	S	*	*	*	†	G										

DIGITS 3 & 4 = (CA) CAPACITY, DIGIT, 5 =(FT) FURNACE TYPE, DIGIT 6 = †(FM) FURNACE MATERIAL.
REFER TO CATALOG FOR MODEL NUMBER DESCRIPTION.