

VERSA-LINE

Submittal

VA-C / VB-C
Versa-Line
Copper/Aluminum and
Steel Element Ratings

Specification

VA-C Flat Top Enclosure

ENCLOSURE:

STYLE: Flat Top
OUTLET: Louvered
Pencil Proof

LENGTHS: 2' thru 8' in 6" Increments

MAT'L: 18 Ga. CRS Std.
 16 Ga. CRS (Opt'l.)
 14 Ga. CRS (Opt'l.)

FINISH: Baked Primer
 Baked Enamel (Opt'l.)
 16 Ga. Stainless Steel (Opt'l.)
 14 Ga. Aluminum (Opt'l.)

ELEMENT:

TYPE: Cu/Al (Mechanically Expanded)
LENGTHS: 2'0" thru 12'6" in 1" Increments for 1" & 1-1/4" Cu.

One End Flared, Std.

TYPE: IPS Steel (Mechanically Expanded)
LENGTHS: 2'0" thru 12'6" in 1" Increments.
 N.P.T. Thread Both Ends Std.
 Beveled Ends For Field Weld.
See Catalog for Working Pressures

VB-C Flat Top Enclosure

BACKPLATE:

TYPE: N/A

BRACKETS:

B.B. Hanger Wall Mtd.

ACCESSORIES:

All overlapping type.

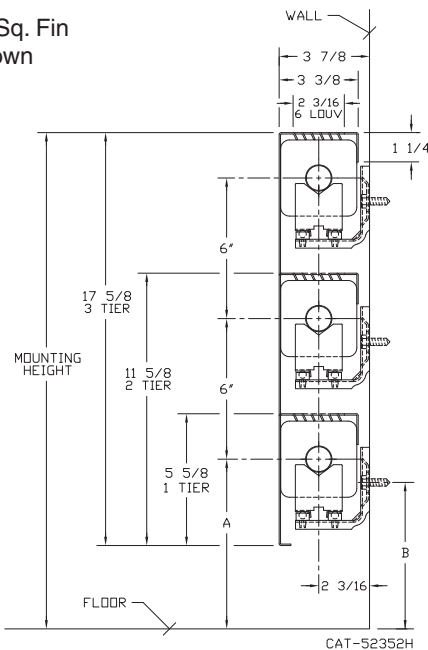
VA-C

ELEMENT TUBE SIZE	FIN SIZE HEIGHT x WIDTH	CRADLE NUMBER	A	B
3/4" COPPER	3 1/4 x 3 1/4	2	6 15/16	6 1/8
1" COPPER	3 1/4 x 3 1/4	2	6 15/16	5 15/16
1 1/4" COPPER	3 1/4 x 3 1/4	1	6 15/16	6 1/2
1" STEEL	3 1/4 x 3 1/4	2	6 15/16	5 13/16
1 1/4" STEEL	3 1/4 x 3 1/4	1	6 15/16	6 5/16

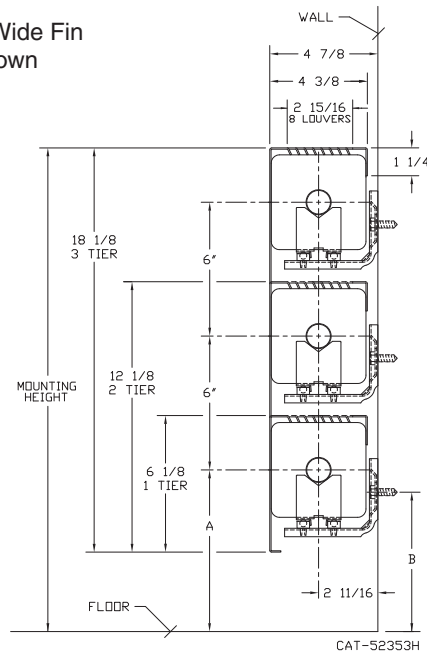
VB-C

ELEMENT TUBE SIZE	FIN SIZE HEIGHT x WIDTH	CRADLE NUMBER	A	B
3/4" COPPER	3 5/8 x 4 1/4	2	7 1/4	6 7/16
	4 1/4 x 4 1/4	3A	6 15/16	5 11/16
1" COPPER	3 5/8 x 4 1/4	2	7 1/4	6 1/4
	4 1/4 x 4 1/4		6 15/16	5 15/16
1 1/4" COPPER	3 5/8 x 4 1/4	2	7 1/4	6 1/8
	4 1/4 x 4 1/4		6 15/16	5 13/16
1" STEEL	4 1/4 x 4 1/4	2	6 15/16	5 13/16
1 1/4" STEEL	4 1/4 x 4 1/4	2	6 15/16	5 5/8
2" STEEL	4 1/4 x 4 1/4	1	6 15/16	5 7/8

3-1/4" Sq. Fin Shown



4-1/4" Wide Fin Shown



STERLING
COMMERCIAL HYDRONIC PRODUCTS
260 North Elm St., Westfield, MA 01085
(413) 564-5535 Fax: (413) 562-8437
www.sterlingheat.com

PROJECT: _____ DATE: _____
LOCATION: _____
ARCHITECT: _____
ENGINEER: _____
CONTRACTOR: _____
PO NUMBER: _____



STYLE "VA-C / VB-C" VERSA-LINE

COPPER/ALUMINUM ELEMENT RATINGS

All ratings are based on 3 FPS velocity

I.P.S. SIZE	CATALOG DESIGNATION	FIN SIZE HEIGHT X WIDTH	FIN PER FT.	FIN THICKNESS IN INCHES	ENCL DEPTH AND HEIGHT IN INCHES	TIERS AND CENTERS IN INCHES	MTG. HEIGHT IN INCHES	STEAM 215° FACTOR	HOT WATER (AVG.)										
									200°	190°	180°	170°	160°	150°	140°	130°	120°	110°	100°
									CORRECTION FACTORS FOR AVERAGE WATER TEMPERATURES										
									1.00	.86	.78	.69	.61	.53	.45	.40	.33	.26	.20
3/4"	C3/4-33	3-1/4" SQ.	32	.020	5A	1	8-7/8	870	750	680	600	530	460	390	350	290	230	170	130
					11A	2 @ 6 CL	14-7/8	1460	1260	1140	1010	900	780	660	580	480	380	290	220
					17A	3 @ 6 CL	20-7/8	1930	1670	1510	1340	1190	1030	880	770	640	500	390	290
3/4"	C3/4-34	3-1/4" SQ.	40	.020	5A	1	8-7/8	1030	890	810	710	630	550	470	410	340	270	210	150
					11A	2 @ 6 CL	14-7/8	1600	1380	1250	1110	980	850	730	640	530	420	320	240
					17A	3 @ 6 CL	20-7/8	2060	1780	1620	1430	1260	1100	940	820	680	540	410	310
3/4"	C3/4-35	3-1/4" SQ.	50	.020	5A	1	8-7/8	1130	980	890	780	690	600	510	450	370	290	230	170
					11A	2 @ 6 CL	14-7/8	1710	1480	1340	1190	1050	910	780	680	560	440	340	260
					17A	3 @ 6 CL	20-7/8	2150	1860	1690	1490	1320	1150	980	860	710	560	430	320
1"	C33	3-1/4" SQ.	32	.020	5A	1	8-7/8	870	750	680	600	530	460	390	350	290	230	170	130
					11A	2 @ 6 CL	14-7/8	1460	1260	1140	1010	900	780	660	580	480	380	290	220
					17A	3 @ 6 CL	20-7/8	1900	1640	1490	1320	1170	1010	860	760	630	490	380	290
1"	C34	3-1/4" SQ.	40	.020	5A	1	8-7/8	970	840	760	670	600	520	440	390	320	250	190	150
					11A	2 @ 6 CL	14-7/8	1570	1360	1230	1090	960	840	710	630	520	410	310	240
					17A	3 @ 6 CL	20-7/8	1990	1720	1560	1380	1220	1060	900	800	660	520	400	300
1"	C35	3-1/4" SQ.	50	.020	5A	1	8-7/8	1090	940	850	760	670	580	490	440	360	280	220	160
					11A	2 @ 6 CL	14-7/8	1650	1430	1290	1150	1010	880	750	660	540	430	330	250
					17A	3 @ 6 CL	20-7/8	2080	1800	1630	1440	1280	1110	940	830	690	540	420	310
1-1/4"	C133	3-1/4" SQ.	32	.020	5A	1	8-7/8	870	750	680	600	530	460	390	350	290	230	170	130
					11A	2 @ 6 CL	14-7/8	1430	1240	1120	990	880	760	650	570	470	370	290	210
					17A	3 @ 6 CL	20-7/8	1890	1630	1480	1310	1160	1010	860	760	620	490	380	280
1-1/4"	C134	3-1/4" SQ.	40	.020	5A	1	8-7/8	950	820	740	660	580	510	430	380	310	250	190	140
					11A	2 @ 6 CL	14-7/8	1560	1350	1220	1080	960	830	710	620	510	410	310	230
					17A	3 @ 6 CL	20-7/8	1960	1690	1540	1360	1200	1050	890	780	650	510	390	290
1-1/4"	C135	3-1/4" SQ.	50	.020	5A	1	8-7/8	1050	910	820	730	640	560	480	420	350	270	210	160
					11A	2 @ 6 CL	14-7/8	1620	1400	1270	1120	990	870	740	650	530	420	320	240
					17A	3 @ 6 CL	20-7/8	2040	1760	1600	1420	1250	1090	930	820	670	530	410	310
3/4"	C3/4-433	3-5/8" X 4-1/4"	32	.020	6B	1	9-3/8	1090	940	850	760	670	580	490	440	360	280	220	160
					12B	2 @ 6 CL	15-3/8	1810	1560	1420	1260	1110	970	820	720	600	470	360	270
					18B	3 @ 6 CL	21-3/8	2300	1990	1800	1600	1410	1230	1040	920	760	600	460	350
3/4"	C3/4-434	3-5/8" X 4-1/4"	40	.020	6B	1	9-3/8	1310	1130	1030	910	800	700	590	520	430	340	260	200
					12B	2 @ 6 CL	15-3/8	2120	1830	1660	1470	1300	1130	960	850	700	550	420	320
					18B	3 @ 6 CL	21-3/8	2640	2280	2070	1830	1620	1410	1200	1060	870	690	530	400
3/4"	C3/4-435	3-5/8" X 4-1/4"	50	.020	6B	1	9-3/8	1440	1240	1130	1000	880	770	650	580	480	370	290	220
					12B	2 @ 6 CL	15-3/8	2250	1940	1760	1560	1380	1200	1020	900	740	590	450	340
					18B	3 @ 6 CL	21-3/8	2760	2380	2160	1920	1690	1470	1250	1100	910	720	550	410
1"	C433	3-5/8" X 4-1/4"	32	.020	6B	1	9-3/8	1130	980	890	780	690	600	510	450	370	290	230	170
					12B	2 @ 6 CL	15-3/8	1890	1630	1480	1310	1160	1010	860	760	620	490	380	280
					18B	3 @ 6 CL	21-3/8	2400	2070	1880	1670	1470	1280	1090	960	790	620	480	360
1"	C434	3-5/8" X 4-1/4"	40	.020	6B	1	9-3/8	1270	1100	1000	880	780	680	580	510	420	330	250	190
					12B	2 @ 6 CL	15-3/8	2060	1780	1620	1430	1260	1100	940	820	680	540	410	310
					18B	3 @ 6 CL	21-3/8	2560	2210	2010	1780	1570	1370	1160	1020	840	670	510	380
1"	C435	3-5/8" X 4-1/4"	50	.020	6B	1	9-3/8	1440	1240	1130	1000	880	770	650	580	480	370	290	220
					12B	2 @ 6 CL	15-3/8	2240	1940	1760	1550	1380	1200	1020	900	740	580	450	340
					18B	3 @ 6 CL	21-3/8	2760	2380	2160	1920	1690	1470	1250	1100	910	720	550	410
1-1/4"	C1433	3-5/8" X 4-1/4"	32	.020	6B	1	9-3/8	1180	1020	930	820	720	630	540	470	390	310	240	180
					12B	2 @ 6 CL	15-3/8	1960	1690	1540	1360	1200	1050	890	780	650	510	390	290
					18B	3 @ 6 CL	21-3/8	2500	2160	1960	1730	1540	1340	1140	1000	830	650	500	380
1-1/4"	C1434	3-5/8" X 4-1/4"	40	.020	6B	1	9-3/8	1300	1120	1020	900	800	690	590	520	430	340	260	200
					12B	2 @ 6 CL	15-3/8	2100	1810	1650	1460	1290	1120	950	840	690	550	420	320
					18B	3 @ 6 CL	21-3/8	2610	2260	2050	1810	1600	1390	1180	1040	860	680	520	390
1-1/4"	C1435	3-5/8" X 4-1/4"	50	.020	6B	1	9-3/8	1440	1240	1130	1000	880	770	650	580	480	370	290	220
					12B	2 @ 6 CL	15-3/8	2250	1940	1760	1560	1380	1200	1020	900	740	590	450	340
					18B	3 @ 6 CL	21-3/8	2770	2390	2170	1920	1700	1480	1260	1110	910	720	550	420

STYLE "VA-C / VB-C" VERSA-LINE

COPPER/ALUMINUM ELEMENT RATINGS

All ratings are based on 3 FPS velocity

I.P.S. SIZE	CATALOG DESIGNATION	FIN SIZE HEIGHT X WIDTH	FIN PER FT.	FIN THICKNESS IN INCHES	ENCL DEPTH AND HEIGHT IN INCHES	TIERS AND CENTERS IN INCHES	MTG. HEIGHT IN INCHES	STEAM 215° FACTOR	HOT WATER (AVG.)										
									200°	190°	180°	170°	160°	150°	140°	130°	120°	110°	100°
									CORRECTION FACTORS FOR AVERAGE WATER TEMPERATURES										
									1.00	.86	.78	.69	.61	.53	.45	.40	.33	.26	.20
3/4"	C3/4 43	4-1/4" SQ.	32	.020	6B	1	9-3/8	1150	990	900	800	710	610	520	460	380	300	230	170
					12B	2 @ 6 CL	15-3/8	1920	1660	1510	1330	1180	1030	870	770	630	500	380	290
					18B	3 @ 6 CL	21-3/8	2450	2120	1920	1700	1500	1310	1110	980	810	640	490	370
3/4"	C3/4 44	4-1/4" SQ.	40	.020	6B	1	9-3/8	1310	1130	1030	910	800	700	590	520	430	340	260	200
					12B	2 @ 6 CL	15-3/8	2030	1750	1590	1410	1250	1080	920	810	670	530	410	300
					18B	3 @ 6 CL	21-3/8	2580	2230	2020	1790	1580	1380	1170	1030	850	670	520	390
3/4"	C3/4 45	4-1/4" SQ.	50	.020	6B	1	9-3/8	1480	1280	1160	1030	910	790	670	590	490	380	300	220
					12B	2 @ 6 CL	15-3/8	2230	1930	1750	1550	1370	1190	1010	890	740	580	450	330
					18B	3 @ 6 CL	21-3/8	2740	2370	2150	1900	1680	1460	1240	1100	900	710	550	410
1"	C43	4-1/4" SQ.	32	.020	6B	1	9-3/8	1210	1050	950	840	740	650	550	480	400	310	240	180
					12B	2 @ 6 CL	15-3/8	2010	1740	1580	1390	1230	1070	910	800	660	520	400	300
					18B	3 @ 6 CL	21-3/8	2580	2230	2020	1790	1580	1380	1170	1030	850	670	520	390
1"	C44	4-1/4" SQ.	40	.020	6B	1	9-3/8	1340	1160	1050	930	820	720	610	540	440	350	270	200
					12B	2 @ 6 CL	15-3/8	2120	1830	1660	1470	1300	1130	960	850	700	550	420	320
					18B	3 @ 6 CL	21-3/8	2820	2440	2210	1960	1730	1510	1280	1130	930	730	560	420
1"	C45	4-1/4" SQ.	50	.020	6B	1	9-3/8	1510	1300	1180	1050	930	810	690	600	500	390	300	230
					12B	2 @ 6 CL	15-3/8	2250	1940	1760	1560	1380	1200	1020	900	740	590	450	340
					18B	3 @ 6 CL	21-3/8	2770	2390	2170	1920	1700	1480	1260	1110	910	720	550	420
1-1/4"	C143	4-1/4" SQ.	32	.020	6B	1	9-3/8	1260	1090	990	870	770	670	570	500	420	330	250	190
					12B	2 @ 6 CL	15-3/8	2100	1810	1650	1460	1290	1120	950	840	690	550	420	320
					18B	3 @ 6 CL	21-3/8	2690	2320	2110	1870	1650	1440	1220	1080	890	700	540	400
1-1/4"	C144	4-1/4" SQ.	40	.020	6B	1	9-3/8	1490	1290	1170	1030	910	800	680	600	490	390	300	220
					12B	2 @ 6 CL	15-3/8	2280	1970	1790	1580	1400	1220	1040	910	750	590	460	340
					18B	3 @ 6 CL	21-3/8	2790	2410	2190	1940	1710	1490	1270	1120	920	730	560	420
1-1/4"	C145	4-1/4" SQ.	50	.020	6B	1	9-3/8	1540	1330	1210	1070	950	820	700	620	510	400	310	230
					12B	2 @ 6 CL	15-3/8	2090	1810	1640	1450	1280	1120	950	840	690	540	420	310
					18B	3 @ 6 CL	21-3/8	2560	2210	2010	1780	1570	1370	1160	1020	840	670	510	380

Note: Copper tube furnished flared one end standard.

STEEL ELEMENT RATINGS

All ratings are based on 3 FPS velocity

I.P.S. SIZE	CATALOG DESIGNATION	FIN SIZE HEIGHT X WIDTH	FIN PER FT.	FIN THICKNESS IN INCHES	ENCL DEPTH AND HEIGHT IN INCHES	TIERS AND CENTERS IN INCHES	MTG. HEIGHT IN INCHES	STEAM 215° FACTOR	HOT WATER (AVG.)										
									200°	190°	180°	170°	160°	150°	140°	130°	120°	110°	100°
									CORRECTION FACTORS FOR AVERAGE WATER TEMPERATURES										
									1.00	.86	.78	.69	.61	.53	.45	.40	.33	.26	.20
1"	S33	3-1/4" SQ.	32	.032	5A	1	8-7/8"	820	710	640	570	500	440	370	330	270	210	160	120
					11A	2 @ 6 CL	14-7/8"	1340	1160	1050	930	820	720	610	540	440	350	270	200
					17A	3 @ 6 CL	20-7/8"	1760	1520	1380	1220	1080	940	800	700	580	460	350	260
1"	S34	3-1/4" SQ.	40	.032	5A	1	8-7/8"	890	770	700	620	550	480	400	360	290	230	180	130
					11A	2 @ 6 CL	14-7/8"	1450	1250	1140	1010	890	770	660	580	480	380	290	220
					17A	3 @ 6 CL	20-7/8"	1880	1620	1470	1300	1150	1000	850	750	620	490	380	280
1"	S35	3-1/4" SQ.	50	.032	5A	1	8-7/8"	950	820	740	660	580	510	430	380	310	250	190	140
					11A	2 @ 6 CL	14-7/8"	1520	1310	1190	1050	930	810	690	610	500	400	300	230
					17A	3 @ 6 CL	20-7/8"	1960	1690	1540	1360	1200	1050	890	780	650	510	390	290
1-1/4"	S133	3-1/4" SQ.	32	.032	5A	1	8-7/8"	810	700	640	560	500	430	370	320	270	210	160	120
					11A	2 @ 6 CL	14-7/8"	1380	1190	1080	960	850	740	630	550	460	360	280	210
					17A	3 @ 6 CL	20-7/8"	1790	1550	1400	1240	1100	960	810	720	590	470	360	270
1-1/4"	S134	3-1/4" SQ.	40	.032	5A	1	8-7/8"	900	780	710	620	550	480	410	360	300	230	180	140
					11A	2 @ 6 CL	14-7/8"	1450	1250	1140	1010	890	770	660	580	480	380	290	220
					17A	3 @ 6 CL	20-7/8"	1800	1560	1410	1250	1110	960	820	720	590	470	360	270
1-1/4"	S135	3-1/4" SQ.	50	.032	5A	1	8-7/8"	930	800	730	650	570	500	420	370	310	240	190	140
					11A	2 @ 6 CL	14-7/8"	1490	1290	1170	1030	910	800	680	600	490	390	300	220
					17A	3 @ 6 CL	20-7/8"	1820	1570	1430	1260	1120	970	830	730	600	470	360	270

STYLE "VA-C / VB-C" VERSA-LINE

STEEL ELEMENT RATINGS

All ratings are based on 3 FPS velocity

I.P.S. SIZE	CATALOG DESIGNATION	FIN SIZE HEIGHT X WIDTH	FIN PER FT.	FIN THICKNESS IN INCHES	ENCL DEPTH AND HEIGHT IN INCHES	TIERS AND CENTERS IN INCHES	MTG. HEIGHT IN INCHES	STEAM 215° FACTOR	HOT WATER (AVG.)											
									200°	190°	180°	170°	160°	150°	140°	130°	120°	110°	100°	
									CORRECTION FACTORS FOR AVERAGE WATER TEMPERATURES											
									1.00	.86	.78	.69	.61	.53	.45	.40	.33	.26	.20	.15
1"	S43	4-1/4" SQ.	32	.032	6B	1	9-3/8"	1190	1030	930	830	730	640	540	480	390	310	240	180	
					12B	2 @ 6 CL	15-3/8"	1970	1700	1540	1370	1210	1050	890	790	650	510	390	300	
					18B	3 @ 6 CL	21-3/8"	2440	2110	1910	1690	1500	1300	1110	980	810	630	490	370	
1"	S44	4-1/4" SQ.	40	.032	6B	1	9-3/8"	1340	1160	1050	930	820	720	610	540	440	350	270	200	
					12B	2 @ 6 CL	15-3/8"	2080	1800	1630	1440	1280	1110	940	830	690	540	420	310	
					18B	3 @ 6 CL	21-3/8"	2540	2190	1990	1760	1560	1360	1150	1020	840	660	510	380	
1"	S45	4-1/4" SQ.	50	.032	6B	1	9-3/8"	1420	1230	1110	990	870	760	640	570	470	370	280	210	
					12B	2 @ 6 CL	15-3/8"	2130	1840	1670	1480	1310	1140	970	850	700	550	430	320	
					18B	3 @ 6 CL	21-3/8"	2580	2230	2020	1790	1580	1380	1170	1030	850	670	520	390	
1-1/4"	S143	4-1/4" SQ.	32	.032	<i>6B</i>	<i>1</i>	<i>9-3/8"</i>	1180	1020	930	820	720	630	540	470	390	310	240	180	
					<i>12B</i>	<i>2 @ 6 CL</i>	<i>15-3/8"</i>	1960	1690	1540	1360	1200	1050	890	780	650	510	390	290	
					<i>18B</i>	<i>3 @ 6 CL</i>	<i>21-3/8"</i>	2420	2090	1900	1680	1490	1290	1100	970	800	630	480	360	
1-1/4"	S144	4-1/4" SQ.	40	.032	<i>6B</i>	<i>1</i>	<i>9-3/8"</i>	1330	1150	1040	920	820	710	600	530	440	350	270	200	
					<i>12B</i>	<i>2 @ 6 CL</i>	<i>15-3/8"</i>	2070	1790	1620	1440	1270	1110	940	830	680	540	410	310	
					<i>18B</i>	<i>3 @ 6 CL</i>	<i>21-3/8"</i>	2540	2190	1990	1760	1560	1360	1150	1020	840	660	510	380	
1-1/4"	S145	4-1/4" SQ.	50	.032	6B	1	9-3/8"	1400	1210	1100	970	860	750	640	560	460	360	280	210	
					12B	2 @ 6 CL	15-3/8"	2090	1810	1640	1450	1280	1120	950	840	690	540	420	310	
					18B	3 @ 6 CL	21-3/8"	2540	2190	1990	1760	1560	1360	1150	1020	840	660	510	380	
2"	S242	4-1/4" SQ.	25	.032	<i>6B</i>	<i>1</i>	<i>9-3/8"</i>	1030	890	810	710	630	550	470	410	340	270	210	150	
					<i>12B</i>	<i>2 @ 6 CL</i>	<i>15-3/8"</i>	1730	1490	1360	1200	1060	920	790	690	570	450	350	260	
					<i>18B</i>	<i>3 @ 6 CL</i>	<i>21-3/8"</i>	2160	1870	1690	1500	1330	1150	980	860	710	560	430	320	
2"	S243	4-1/4" SQ.	32	.032	<i>6B</i>	<i>1</i>	<i>9-3/8"</i>	1190	1030	930	830	730	640	540	480	390	310	240	180	
					<i>12B</i>	<i>2 @ 6 CL</i>	<i>15-3/8"</i>	1900	1640	1490	1320	1170	1010	860	760	630	490	380	290	
					<i>18B</i>	<i>3 @ 6 CL</i>	<i>21-3/8"</i>	2330	2010	1830	1620	1430	1240	1060	930	770	610	470	350	

- Notes: 1) Steel fins furnished as .032 thick, painted black.
 2) NPT threads furnished on steel elements. Please use domestic fittings for proper installation.
 3) The ends can be provided chamfered for field welded fittings when specified.

► **Bold, italicized units are**  **rated** ◀

STYLE C ACCESSORIES

