

# VERSA-LINE

SCE  
Column Enclosure Kit  
Horizontal

Submittal

## Specification

### SCE COLUMN ENCLOSURE:

- STYLE: Horizontal Column Enclosure  
(No Slip Joints)
- OUTLET: No Louvers, Flat Top  
Closed Bottom, Return to Wall
- SIZE: Columns up to 25" Wide
- MAT'L:  18 Ga. CRS (Std)  
 16 Ga. CRS (Opt'l)  
 14 Ga. CRS (Opt'l)  
 16 Ga. Stainless Steel (Opt'l)  
 14 Ga. Aluminum (Opt'l)
- HEIGHTS:  4"  
 5"  
 11"  
 17"
- FINISH:  Baked Powder (Std)  
 Baked Metallic (Opt'l)

### SCE KIT INCLUDES:

#### COLUMN ENCLOSURE

- TYPE: SCE Half Qty. of 2  
MAT'L: 18 Ga. CRS (Std)

#### BACKPLATE:

- TYPE: B610 Mounting Strip  
LENGTHS: 4'0" Piece Qty. of 1  
MAT'L: 18 Ga. Galvannealed (Std)

#### 2-1/2" SPLICE PLATE:

- Qty. of 1  
MAT'L: 18 Ga. Galvannealed (Std)

### U-CHANNEL:

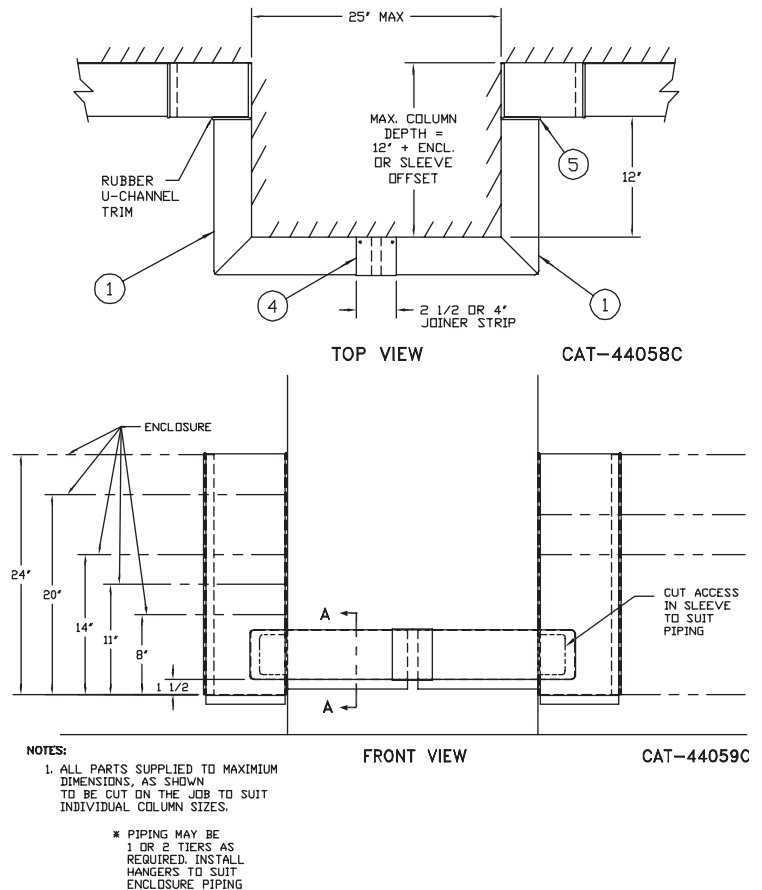
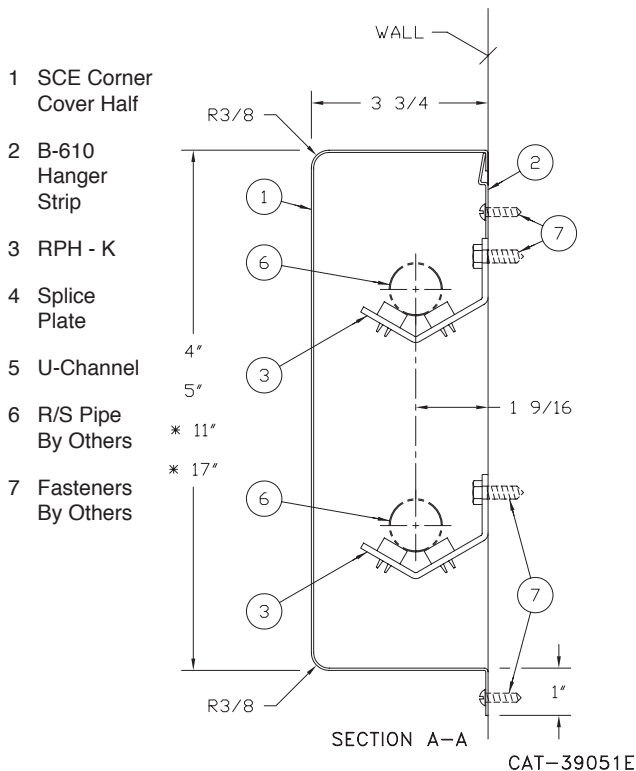
- MAT'L: Rubber Trim

### PIPE HANGERS:

- TYPE:  RPH-K (Opt'l)  
MAT'L: 1/8" Galvannealed (Std)

### SCE COLUMN ENCLOSURE KIT

- SCE-4     SCE-5     SCE-11     SCE-17



260 North Elm St., Westfield, MA 01085  
(413) 564-5535 Fax: (413) 562-8437  
www.sterlingheat.com



PROJECT: \_\_\_\_\_ DATE: \_\_\_\_\_  
 LOCATION: \_\_\_\_\_  
 ARCHITECT: \_\_\_\_\_  
 ENGINEER: \_\_\_\_\_  
 CONTRACTOR: \_\_\_\_\_  
 PO NUMBER: \_\_\_\_\_