

VERSA-LINE

SCE
Column Enclosure Kit
Horizontal

Submittal

Specification

SCE COLUMN ENCLOSURE:

- STYLE: Horizontal Column Enclosure
(No Slip Joints)
- OUTLET: No Louvers, Flat Top
Closed Bottom, Return to Wall
- SIZE: Columns up to 25" Wide
- MAT'L: 18 Ga. CRS Std.
 16 Ga. CRS (Opt'l)
 14 Ga. CRS (Opt'l)
- FINISH: Baked Primer Std.
 Baked Enamel (Opt'l).
 16 Ga. Stainless Steel (Opt'l)
 14 Ga. Aluminum Clear Anod (Opt'l)

SCE KIT INCLUDES:

COLUMN ENCLOSURE

- TYPE: SCE Half Qty. of 2
MAT'L: 18 Ga. CRS Std.

BACKPLATE:

- TYPE: B610 Mounting Strip
LENGTHS: 4'0" Piece Qty. of 1
MAT'L: 18 Ga. Galvannealed Std.

2-1/2" SPLICE PLATE

- Qty. of 1
18 Ga. CRS Std.

U-CHANNEL

- MAT'L: Rubber Trim

PIPE HANGERS:

- TYPE: RPH-K (Opt'l)
MAT'L: 1/8" Galvannealed Std.

SCE COLUMN ENCLOSURE KIT

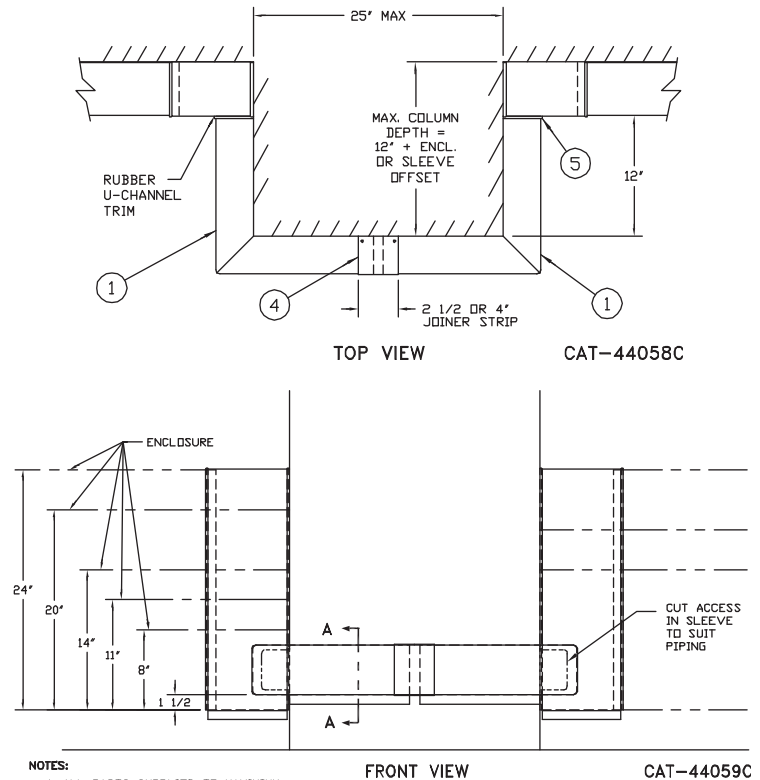
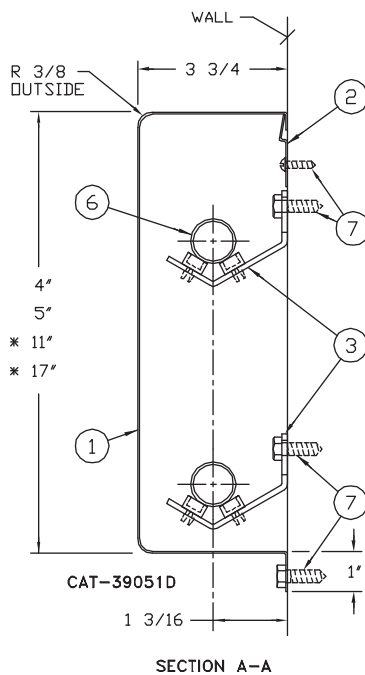
SCE-4

SCE-5

SCE-11

SCE-17

- 1 SCE Corner Cover Half
- 2 B-610 Hanger Strip
- 3 RPH - K
- 4 Splice Plate
- 5 U-Channel
- 6 R/S Pipe By Others
- 7 Fasteners By Others



NOTES:

1. ALL PARTS SUPPLIED TO MAXIMUM DIMENSIONS, AS SHOWN TO BE CUT ON THE JOB TO SUIT INDIVIDUAL COLUMN SIZES.

* PIPING MAY BE 1 OR 2 TIERS AS REQUIRED. INSTALL HANGERS TO SUIT ENCLOSURE PIPING



260 North Elm St., Westfield, MA 01085
(413) 564-5535 Fax: (413) 562-8437
www.sterlingheat.com



PROJECT: _____ DATE: _____
 LOCATION: _____
 ARCHITECT: _____
 ENGINEER: _____
 CONTRACTOR: _____
 PO NUMBER: _____