

VERSA-LINE

Submittal

JVB-S 14 20 & 24
Versa-Line
Copper/Aluminum and
Steel Element Ratings

JVB Slip Jointed Enclosure

Specification

ENCLOSURE:

- STYLE: Slope
 OUTLET: Stamped Louvers
 Pencil Proof
- LENGTHS: 2' thru 8' in 6" Increments
 MAT'L: 18 Ga. CRS STD.
 16 Ga. CRS (Opt'l)
 14 Ga. CRS (Opt'l)
- FINISH: Prime Finish Std.
 Baked Enamel (Opt'l).
 16 Ga. Stainless Steel (Opt'l)
 14 Ga. Aluminum (Opt'l)

ACCESSORIES:

- JV Overlapping Type
 All accessories return to the wall at the bottom and have pre-punched holes for fastening to the wall.

ELEMENT:

- TYPE: Cu/Al (Mechanically Expanded)
 LENGTHS: 2'0" thru 12'6" in 1" Increments for 1" & 1-1/4" Cu.
 2' thru 8' in 1" Increments for 3/4" Cu.
- One End Flared, Std.
- TYPE: IPS Steel (Mechanically Expanded)
 LENGTHS: 2'0" thru 12'6" in 1" Increments
 NPT Thread both Ends Std.
 Beveled Ends for Field Weld
 See Catalog for Working Pressures

BACKPLATE:

- TYPE: Partial B/P
 LENGTHS: 8' Only
 MAT'L: 20 Ga. Prepainted Std.
 18 Ga. Galvannealed (Opt'l)
- TYPE: Full Ht. B/P (Opt'l)
 LENGTHS: 2' thru 8' in 6" increments
 MAT'L: 20 Ga. Galvannealed (Opt'l)
 18 Ga. Painted (Opt'l)

AIRSEAL:

- 1/8" x 3/8" Closed Cell (Opt'l)

BRACKETS:

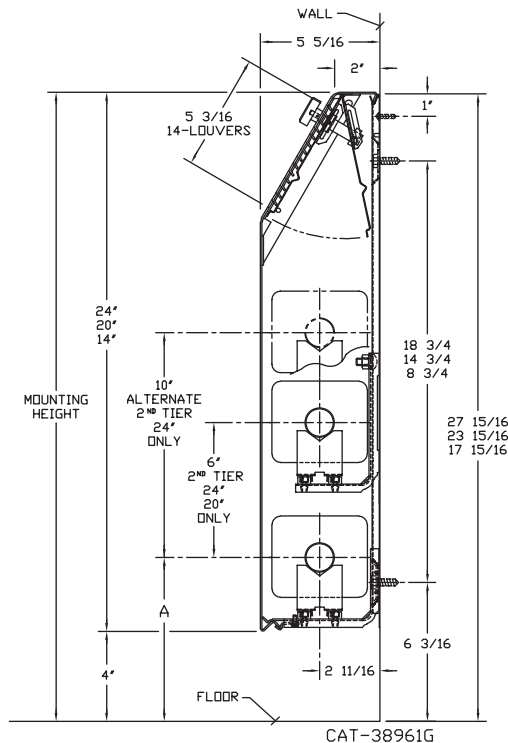
- Water Brkt w/B.B.
 Steam Brkt w/Brkt Mtd B.B. Hngr

DAMPER:

- Damper Blades Factory Installed
 Knob Damper (Opt'l)
 Tamper Resistant (Opt'l)

JVB-S14 20 24

ELEMENT TUBE SIZE	CRADLE	A
3/4" COPPER	2	7
1" COPPER	2	7-3/16
1-1/4" COPPER	2	7-5/16
1-1/4" STEEL	2	7-1/2
2" STEEL	1	7-1/4



STERLING
 COMMERCIAL HYDRONIC PRODUCTS
 260 North Elm St., Westfield, MA 01085
 (413) 564-5535 Fax: (413) 562-8437
 www.sterlingheat.com

PROJECT: _____ DATE: _____
 LOCATION: _____
 ARCHITECT: _____
 ENGINEER: _____
 CONTRACTOR: _____
 PO NUMBER: _____

STYLE "JVB-S14 20 24" VERSA-LINE

COPPER/ALUMINUM ELEMENT RATINGS

TUBE SIZE	CATALOG DESIGNATION	FIN SIZE	FIN PER FT.	FIN THICKNESS	ENCL DEPTH AND HEIGHT IN INCHES	TIERS AND CENTERS IN INCHES	MTG. HEIGHT IN INCHES	STEAM FACTOR 215°	HOT WATER (AVG.)					
									200°	190°	180°	170°	160°	150°
									FACTOR					
									1.00	.86	.78	.69	.61	.53
3/4"	C3/4-434	4-1/4" x 3-5/8"	40	.020"	14B	1	18	1700	1460	1330	1170	1040	900	770
					20B	1	24	1820	1570	1420	1260	1110	960	820
					"	2-6 CL	"	2580	2220	2010	1780	1570	1370	1160
					24B	1	28	1910	1640	1490	1320	1170	1010	860
					"	2-6 CL	"	2700	2320	2110	1860	1650	1430	1220
"	"	2-10 CL	"	2780	2390	2170	1920	1700	1470	1250				
3/4"	C3/4-435	4-1/4" x 3-5/8"	50	.020"	14B	1	18	1840	1580	1440	1270	1120	980	830
					20B	1	24	2090	1800	1630	1440	1270	1110	940
					"	2-6 CL	"	2820	2430	2200	1950	1720	1490	1270
					24B	1	28	2260	1940	1760	1560	1380	1200	1020
					"	2-6 CL	"	3110	2670	2430	2150	1900	1650	1400
"	"	2-10 CL	"	3220	2770	2510	2220	1960	1710	1450				
1"	C433	4-1/4" x 3-5/8"	32	.020"	14B	1	18	1540	1320	1200	1060	940	820	690
					20B	1	24	1620	1390	1260	1120	990	860	730
					"	2-6 CL	"	2500	2150	1950	1730	1530	1330	1130
					24B	1	28	1690	1450	1320	1170	1030	900	760
					"	2-6 CL	"	2590	2230	2020	1790	1580	1370	1170
"	"	2-10 CL	"	2640	2270	2060	1820	1610	1400	1190				
1"	C434	4-1/4" x 3-5/8"	40	.020"	14B	1	18	1780	1530	1390	1230	1090	940	800
					20B	1	24	1900	1630	1480	1310	1160	1010	860
					"	2-6 CL	"	2660	2290	2070	1840	1620	1410	1200
					24B	1	28	1990	1710	1550	1370	1210	1050	900
					"	2-6 CL	"	2770	2380	2160	1910	1690	1470	1250
"	"	2-10 CL	"	2850	2450	2220	1970	1740	1510	1280				
1"	C435	4-1/4" x 3-5/8"	50	.020"	14B	1	18	1930	1660	1510	1330	1180	1020	870
					20B	1	24	2180	1870	1700	1500	1330	1160	980
					"	2-6 CL	"	2640	2270	2060	1820	1610	1400	1190
					24B	1	28	2360	2030	1840	1630	1440	1250	1060
					"	2-6 CL	"	2910	2500	2270	2010	1780	1540	1310
"	"	2-10 CL	"	3000	2580	2340	2070	1830	1590	1350				
1-1/4"	C1433	4-1/4" x 3-5/8"	32	.020"	14B	1	18	1450	1250	1130	1000	880	770	650
					20B	1	24	1530	1320	1190	1060	930	810	690
					"	2-6 CL	"	2360	2030	1840	1630	1440	1250	1060
					24B	1	28	1590	1370	1240	1100	970	840	720
					"	2-6 CL	"	2450	2110	1910	1690	1490	1300	1100
"	"	2-10 CL	"	2500	2150	1950	1730	1530	1330	1130				

► **Bold, italicized units are**  **rated** ◀

STYLE "JVB-S14 20 24" VERSA-LINE

COPPER/ALUMINUM ELEMENT RATINGS

TUBE SIZE	CATALOG DESIGNATION	FIN SIZE	FIN PER FT.	FIN THICKNESS	ENCL DEPTH AND HEIGHT IN INCHES	TIERS AND CENTERS IN INCHES	MTG. HEIGHT IN INCHES	STEAM FACTOR 215°	HOT WATER (AVG.)					
									200°	190°	180°	170°	160°	150°
									FACTOR					
									1.00	.86	.78	.69	.61	.53
1-1/4"	C1434	4-1/4" x 3-5/8"	40	.020"	14B	1	18	1740	1500	1360	1200	1060	920	780
					20B	1	24	1880	1620	1470	1300	1150	1000	850
					"	2-6 CL	"	2610	2240	2040	1800	1590	1380	1170
					24B	1	28	1950	1680	1520	1350	1190	1030	880
					"	2-6 CL	"	2710	2330	2110	1870	1650	1440	1220
1-1/4"	C1435	4-1/4" x 3-5/8"	50	.020"	14B	1	18	1860	1600	1450	1280	1130	990	840
					20B	1	24	2130	1830	1660	1470	1300	1130	960
					"	2-6 CL	"	2510	2160	1960	1730	1530	1330	1130
					24B	1	28	2270	1950	1770	1570	1380	1200	1020
					"	2-6 CL	"	2810	2420	2190	1940	1710	1490	1260
1"	C43	4-1/4" SQ.	32	.020"	14B	1	18	1650	1420	1290	1140	1010	880	740
					20B	1	24	1740	1500	1360	1200	1060	920	780
					"	2-6 CL	"	2590	2230	2020	1790	1580	1370	1170
					24B	1	28	1810	1560	1410	1250	1100	960	820
					"	2-6 CL	"	2830	2430	2210	1950	1730	1500	1270
1"	C44	4-1/4" SQ.	40	.020"	14B	1	18	1880	1620	1470	1300	1150	1000	850
					20B	1	24	2040	1750	1590	1410	1240	1080	920
					"	2-6 CL	"	2690	2310	2100	1860	1640	1430	1210
					24B	1	28	2140	1840	1670	1480	1310	1130	960
					"	2-6 CL	"	2920	2510	2280	2010	1780	1550	1310
1"	C45	4-1/4" SQ.	50	.020"	14B	1	18	2060	1770	1610	1420	1260	1090	930
					20B	1	24	2340	2010	1830	1610	1430	1240	1050
					"	2-6 CL	"	2680	2300	2090	1850	1630	1420	1210
					24B	1	28	2510	2160	1960	1730	1530	1330	1130
					"	2-6 CL	"	3000	2580	2340	2070	1830	1590	1350
1-1/4"	C143	4-1/4" SQ.	32	.020"	14B	1	18	1620	1390	1260	1120	990	860	730
					20B	1	24	1710	1470	1330	1180	1040	910	770
					"	2-6 CL	"	2540	2180	1980	1750	1550	1350	1140
					24B	1	28	1770	1520	1380	1220	1080	940	800
					"	2-6 CL	"	2780	2390	2170	1920	1700	1470	1250
1-1/4"	C143	4-1/4" SQ.	32	.020"	14B	1	18	1620	1390	1260	1120	990	860	730
					20B	1	24	1710	1470	1330	1180	1040	910	770
					"	2-6 CL	"	2540	2180	1980	1750	1550	1350	1140
					24B	1	28	1770	1520	1380	1220	1080	940	800
					"	2-6 CL	"	2780	2390	2170	1920	1700	1470	1250
1-1/4"	C143	4-1/4" SQ.	32	.020"	14B	1	18	1620	1390	1260	1120	990	860	730
					20B	1	24	1710	1470	1330	1180	1040	910	770
					"	2-6 CL	"	2540	2180	1980	1750	1550	1350	1140
					24B	1	28	1770	1520	1380	1220	1080	940	800
					"	2-6 CL	"	2780	2390	2170	1920	1700	1470	1250
1-1/4"	C143	4-1/4" SQ.	32	.020"	14B	1	18	1620	1390	1260	1120	990	860	730
					20B	1	24	1710	1470	1330	1180	1040	910	770
					"	2-6 CL	"	2540	2180	1980	1750	1550	1350	1140
					24B	1	28	1770	1520	1380	1220	1080	940	800
					"	2-6 CL	"	2780	2390	2170	1920	1700	1470	1250
1-1/4"	C143	4-1/4" SQ.	32	.020"	14B	1	18	1620	1390	1260	1120	990	860	730
					20B	1	24	1710	1470	1330	1180	1040	910	770
					"	2-6 CL	"	2540	2180	1980	1750	1550	1350	1140
					24B	1	28	1770	1520	1380	1220	1080	940	800
					"	2-6 CL	"	2780	2390	2170	1920	1700	1470	1250
1-1/4"	C143	4-1/4" SQ.	32	.020"	14B	1	18	1620	1390	1260	1120	990	860	730
					20B	1	24	1710	1470	1330	1180	1040	910	770
					"	2-6 CL	"	2540	2180	1980	1750	1550	1350	1140
					24B	1	28	1770	1520	1380	1220	1080	940	800
					"	2-6 CL	"	2780	2390	2170	1920	1700	1470	1250
1-1/4"	C143	4-1/4" SQ.	32	.020"	14B	1	18	1620	1390	1260	1120	990	860	730
					20B	1	24	1710	1470	1330	1180	1040	910	770
					"	2-6 CL	"	2540	2180	1980	1750	1550	1350	1140
					24B	1	28	1770	1520	1380	1220	1080	940	800
					"	2-6 CL	"	2780	2390	2170	1920	1700	1470	1250
1-1/4"	C143	4-1/4" SQ.	32	.020"	14B	1	18	1620	1390	1260	1120	990	860	730
					20B	1	24	1710	1470	1330	1180	1040	910	770
					"	2-6 CL	"	2540	2180	1980	1750	1550	1350	1140
					24B	1	28	1770	1520	1380	1220	1080	940	800
					"	2-6 CL	"	2780	2390	2170	1920	1700	1470	1250
1-1/4"	C143	4-1/4" SQ.	32	.020"	14B	1	18	1620	1390	1260	1120	990	860	730
					20B	1	24	1710	1470	1330	1180	1040	910	770
					"	2-6 CL	"	2540	2180	1980	1750	1550	1350	1140
					24B	1	28	1770	1520	1380	1220	1080	940	800
					"	2-6 CL	"	2780	2390	2170	1920	1700	1470	1250
1-1/4"	C143	4-1/4" SQ.	32	.020"	14B	1	18	1620	1390	1260	1120	990	860	730
					20B	1	24	1710	1470	1330	1180	1040	910	770
					"	2-6 CL	"	2540	2180	1980	1750	1550	1350	1140
					24B	1	28	1770	1520	1380	1220	1080	940	800
					"	2-6 CL	"	2780	2390	2170	1920	1700	1470	1250
1-1/4"	C143	4-1/4" SQ.	32	.020"	14B	1	18	1620	1390	1260	1120	990	860	730
					20B	1	24	1710	1470	1330	1180	1040	910	770
					"	2-6 CL	"	2540	2180	1980	1750	1550	1350	1140
					24B	1	28	1770	1520	1380	1220	1080	940	800
					"	2-6 CL	"	2780	2390	2170	1920	1700	1470	1250
1-1/4"	C143	4-1/4" SQ.	32	.020"	14B	1	18	1620	1390	1260	1120	990	860	730
					20B	1	24	1710	1470	1330	1180	1040	910	770
					"	2-6 CL	"	2540	2180	1980	1750	1550	1350	1140
					24B	1	28	1770	1520	1380	1220	1080	940	800
					"	2-6 CL	"	2780	2390	2170	1920	1700	1470	1250
1-1/4"	C143	4-1/4" SQ.	32	.020"	14B	1	18	1620	1390	1260	1120	990	860	730
					20B	1	24	1710	1470	1330	1180	1040	910	770
					"	2-6 CL	"	2540	2180	1980	1750	1550	1350	1140
					24B	1	28	1770	1520	1380	1220	1080	940	800
					"	2-6 CL	"	2780	2390	2170	1920	1700	1470	1250
1-1/4"	C143	4-1/4" SQ.	32	.020"	14B	1	18	1620	1390	1260	1120	990	860	730
					20B	1	24	1710	1470	1330	1180	1040	910	770
					"	2-6 CL	"	2540	2180	1980	1750	1550	1350	1140
					24B	1	28	1770	1520	1380	1220	1080	940	800
					"	2-6 CL	"	2780	2390	2170	1920	1700	1470	1250
1-1/4"	C143	4-1/4" SQ.	32	.020"	14B	1	18	1620	1390	1260	1120	990	860	730
					20B	1	24	1710	1470	1330	1180	1040	910	770
					"	2-6 CL	"	2540	2180	1980	1750	1550	1350	1140
					24B	1	28	1770	1520	1380	1220	1080	940	800
					"	2-6 CL	"	2780	2390	2170	1920	1700	1470	1250
1-1/4"	C143	4-1/4" SQ.	32	.020"	14B	1	18	1620	1390	1260	1120	990	860	730
					20B	1	24	1710	1470	1330	1180	1040	910	770
					"	2-6 CL	"	2540	2180	1980	1750	1550	1350	1140
					24B	1	28	1770	1520	1380	1220	1080	940	800
					"	2-6 CL	"	2780	2390	2170	1920	1700	1470	1250
1-1/4"	C143	4-1/4" SQ.	32	.020"	14B	1	18	1620	1390	1260	1120</			

STYLE "JVB-S14 20 24" VERSA-LINE

COPPER/ALUMINUM ELEMENT RATINGS

TUBE SIZE	CATALOG DESIGNATION	FIN SIZE	FIN PER FT.	FIN THICKNESS	ENCL DEPTH AND HEIGHT IN INCHES	TIERS AND CENTERS IN INCHES	MTG. HEIGHT IN INCHES	STEAM FACTOR 215°	HOT WATER (AVG.)					
									200°	190°	180°	170°	160°	150°
									FACTOR					
									1.00	.86	.78	.69	.61	.53
1-1/4"	C144	4-1/4" SQ.	40	.020"	14B	1	18	1850	1590	1440	1280	1130	980	830
					20B	1	24	2000	1720	1560	1380	1220	1060	900
					"	2-6 CL	"	2640	2270	2060	1820	1610	1400	1190
					24B	1	28	2100	1810	1640	1450	1280	1110	950
					"	2-6 CL	"	2870	2470	2240	1980	1750	1520	1290
"	2-10 CL	"	2950	2540	2300	2040	1800	1560	1330					
1-1/4"	C145	4-1/4" SQ.	50	.020"	14B	1	18	2020	1740	1580	1400	1230	1070	910
					20B	1	24	2300	1980	1790	1590	1400	1220	1040
					"	2-6 CL	"	2630	2260	2050	1810	1600	1390	1180
					24B	1	28	2470	2120	1930	1700	1510	1310	1110
					"	2-6 CL	"	2950	2540	2300	2040	1800	1560	1330
"	2-10 CL	"	3020	2600	2360	2080	1840	1600	1360					

Note: Copper tube furnished flared one end standard.

STEEL ELEMENT RATINGS

I.P.S. SIZE	CATALOG DESIGNATION	FIN SIZE	FIN PER FT.	FIN THICKNESS	ENCL DEPTH AND HEIGHT IN INCHES	TIERS AND CENTERS IN INCHES	MTG. HEIGHT IN INCHES	STEAM FACTOR 215°	HOT WATER (AVG.)					
									200°	190°	180°	170°	160°	150°
									FACTOR					
									1.00	.86	.78	.69	.61	.53
1-1/4"	S143	4-1/4" SQ.	32	.032"	14B	1	18	1400	1200	1090	970	850	740	630
					20B	1	24	1450	1250	1130	1000	880	770	650
					"	2-6 CL	"	2180	1870	1700	1500	1330	1160	980
					24B	1	28	1490	1280	1160	1030	910	790	670
					"	2-6 CL	"	2250	1940	1760	1550	1370	1190	1010
"	2-10 CL	"	2280	1960	1780	1570	1390	1210	1030					
1-1/4"	S144	4-1/4" SQ.	40	.032"	14B	1	18	1570	1350	1230	1080	960	830	710
					20B	1	24	1670	1440	1300	1150	1020	890	750
					"	2-6 CL	"	2370	2040	1850	1640	1450	1260	1070
					24B	1	28	1730	1490	1350	1190	1060	920	780
					"	2-6 CL	"	2480	2130	1930	1710	1510	1310	1120
"	2-10 CL	"	2530	2180	1970	1750	1540	1340	1140					
2"	S242	4-1/4" SQ.	25	.032"	14B	1	18	1200	1030	940	830	730	640	540
					20B	1	24	1230	1060	960	850	750	650	550
					"	2-6 CL	"	1930	1660	1510	1330	1180	1020	870
					24B	1	28	1250	1080	980	860	760	660	560
					"	2-6 CL	"	1940	1670	1510	1340	1180	1030	870
"	2-10 CL	"	2010	1730	1570	1390	1230	1070	910					
2"	S243	4-1/4" SQ.	32	.032"	14B	1	18	1400	1200	1090	970	850	740	630
					20B	1	24	1450	1250	1130	1000	890	770	650
					"	2-6 CL	"	2110	1820	1650	1460	1290	1120	950
					24B	1	28	1490	1280	1160	1030	910	790	670
					"	2-6 CL	"	2180	1880	1700	1500	1330	1160	980
"	2-10 CL	"	2260	1940	1760	1560	1380	1200	1020					

- Notes: 1) Steel fin furnished as .032 thick, painted black.
 2) NPT threads furnished on steel elements. Please use domestic fittings for proper installation.
 3) The ends can be provided chamfered for field welded fittings when specified.

Steam Bracket and BB Hanger

ELEMENT TUBE SIZE	CRADLE NO.	A MIN	A MAX
3/4" COPPER	2	7 3/8	8 3/4
1" COPPER	2	7 1/2	8 7/8
1 1/4" COPPER	2	7 5/8	9'
1 1/4" STEEL	2	7 7/8	9 1/4
2" STEEL	1	7 5/8	9'

