

VERSA-LINE

JVA-S11 14
Versa-Line
Copper/Aluminum and
Steel Element Ratings

Submittal

Specification

□ JVA Slip Jointed Enclosure

ENCLOSURE:

- STYLE: Slope
OUTLET: Stamped Louvers
Pencil Proof
- LENGTHS: 2' thru 8' in 6' Increments
MAT'L: 18 Ga. CRS STD.
 16 Ga. CRS (Opt'l)
 14 Ga. CRS (Opt'l)
- FINISH: Prime Finish Std.
 Baked Enamel (Opt'l).
 16 Ga. Stainless Steel (Opt'l)
 14 Ga. Aluminum (Opt'l)

ACCESSORIES:

- JV Overlapping Type
All accessories return to the wall at the bottom and have pre-punched holes for fastening to the wall.

ELEMENT:

- TYPE: Cu/Al (Mechanically Expanded)
- LENGTHS: 2'0" thru 12'6" in 1' Increments for 1' & 1-1/4' Cu.
2' thru 8' in 1' Increments for 3/4' Cu.
- One End Flared, Std.
- TYPE: IPS Steel (Mechanically Expanded)
- LENGTHS: 2'0" thru 12'6" in 1' Increments
 NPT Thread both Ends Std.
 Beveled Ends for Field Weld
See Catalog for Working Pressures

BACKPLATE:

- TYPE: Partial B/P
- LENGTHS: 8' Only
- MAT'L: 20 Ga. Prepainted Std.
 18 Ga. Galvannealed (Opt'l)
- TYPE: Full Ht. B/P (Opt'l)
- LENGTHS: 2' thru 8' in 6' increments
- MAT'L: 20 Ga. Galvannealed (Opt'l)
 18 Ga. Painted (Opt'l)

AIRSEAL:

- 1/8" x 3/8" Closed Cell (Opt'l)

BRACKETS:

- Water Brkt w/B.B.
 14" Only Steam Brkt w/Brkt Mtd B.B. Hngr

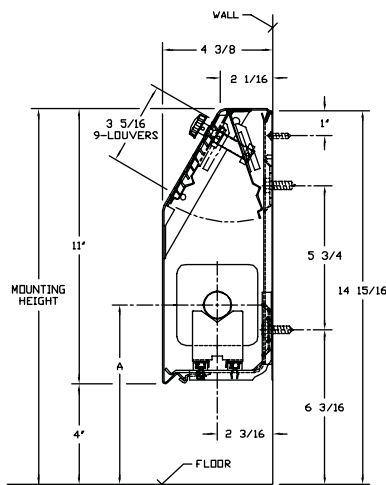
DAMPER:

- Damper Blades Factory Installed
 Knob Damper (Opt'l)
 Tamper Resistant (Opt'l)

□ JVA-S11*

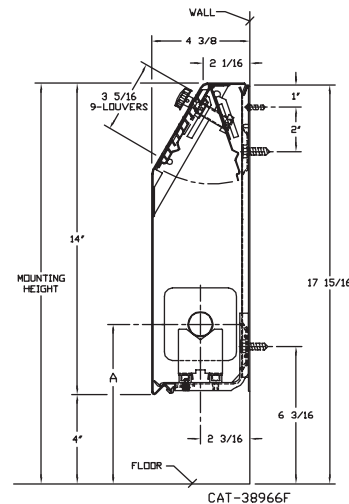
ELEMENT TUBE SIZE	CRADLE NUMBER	A
3/4" COPPER	2	7
1" COPPER	2	7-3/16
1-1/4" COPPER	1	6-5/8
1" STEEL	2	7-5/16
1-1/4" STEEL	1	6-13/16

*Not recommended for steam applications.



□ JVA-S14

ELEMENT TUBE SIZE	CRADLE NUMBER	A
3/4" COPPER	2	7
1" COPPER	2	7-3/16
1-1/4" COPPER	1	6-5/8
1" STEEL	2	7-5/16
1-1/4" STEEL	1	6-13/16



STERLING
COMMERCIAL HYDRONIC PRODUCTS
260 North Elm St., Westfield, MA 01085
(413) 564-5535 Fax: (413) 562-8437
www.sterlingheat.com

PROJECT: _____ DATE: _____
LOCATION: _____
ARCHITECT: _____
ENGINEER: _____
CONTRACTOR: _____
PO NUMBER: _____

STYLE "JVA-S11 14" VERSA-LINE

COPPER/ALUMINUM ELEMENT RATINGS

TUBE SIZE	CATALOG DESIGNATION	FIN SIZE	FIN PER FT.	FIN THICKNESS	ENCL DEPTH AND HEIGHT IN INCHES	TIERS AND CENTERS IN INCHES	MTG. HEIGHT IN INCHES	STEAM 215° FACTOR 1.00	HOT WATER (AVG.)					
									200°	190°	180°	170°	160°	150°
									FACTOR					
									.86	.78	.69	.61	.53	.45
3/4"	C3/4-34	3-1/4" SQ.	40	.020"	11A*	1	15	1180	1010	920	810	720	630	530
3/4"	C3/4-35	3-1/4" SQ.	50	.020"	"	"	"	1320	1140	1030	910	810	700	590
1"	C33	3-1/4" SQ.	32	.020"	"	"	"	980	840	760	680	600	520	440
1"	C34	3-1/4" SQ.	40	.020"	"	"	"	1150	990	900	790	700	610	520
1"	C35	3-1/4" SQ.	50	.020"	"	"	"	1260	1080	980	870	770	670	570
1-1/4"	C133	3-1/4" SQ.	32	.020"	"	"	"	920	790	720	630	560	490	410
1-1/4"	C134	3-1/4" SQ.	40	.020"	"	"	"	1080	930	840	750	660	570	490
1-1/4"	C135	3-1/4" SQ.	50	.020"	"	"	"	1190	1020	930	820	730	630	540
3/4"	R01	2-1/4" x 2-1/2"	50	.011"	"	"	"	710	610	550	490	430	380	320
3/4"	R02	2-3/4" x 2-1/2"	60	.011"	"	"	"	950	820	740	660	580	500	430
3/4"	R04	2-3/4" x 3-3/4"	50	.011"	"	"	"	980	840	760	680	600	520	440
1"	R05	2-3/4" x 3-3/4"	50	.011"	"	"	"	990	850	770	680	600	520	450
1"	R03	2-3/4" x 2-1/2"	55	.011"	"	"	"	920	790	720	630	560	490	410
3/4"	C3/4-34	3-1/4" SQ.	40	.020"	14A	1	18	1290	1110	1010	890	790	680	580
3/4"	C3/4-35	3-1/4" SQ.	50	.020"	"	"	"	1440	1240	1120	990	880	760	650
1"	C33	3-1/4" SQ.	32	.020"	"	"	"	1060	910	830	730	650	560	480
1"	C34	3-1/4" SQ.	40	.020"	"	"	"	1250	1080	980	860	760	660	560
1"	C35	3-1/4" SQ.	50	.020"	"	"	"	1370	1180	1070	950	840	730	620
1-1/4"	C133	3-1/4" SQ.	32	.020"	14A	1	18	1020	880	800	700	620	540	460
1-1/4"	C134	3-1/4" SQ.	40	.020"	"	"	"	1190	1020	930	820	730	630	540
1-1/4"	C135	3-1/4" SQ.	50	.020"	"	"	"	1330	1140	1040	920	810	700	600

*Not recommended for steam applications consult factory.

Note: Copper tube furnished flared one end standard.

STEEL ELEMENT RATINGS

I.P.S. SIZE	CATALOG DESIGNATION	FIN SIZE	FIN PER FT.	FIN THICKNESS	ENCL DEPTH AND HEIGHT IN INCHES	TIERS AND CENTERS IN INCHES	MTG. HEIGHT IN INCHES	STEAM 215° FACTOR 1.00	HOT WATER (AVG.)					
									200°	190°	180°	170°	160°	150°
									FACTOR					
									.86	.78	.69	.61	.53	.45
1"	R11	2-3/4" x 3-3/4"	40	.024"	11A*	1	15	900	770	700	620	550	480	410
1-1/4"	S133	3-1/4" SQ.	32	.032"	"	"	"	920	790	720	640	560	490	410
1-1/4"	S134	3-1/4" SQ.	40	.032"	"	"	"	1000	860	780	690	610	530	450
1-1/4"	S133	3-1/4" SQ.	32	.032"	14A	1	18	960	830	750	660	590	510	430
1-1/4"	S134	3-1/4" SQ.	40	.032"	14A	1	18	1120	960	870	770	680	590	500

*Not recommended for steam applications consult factory.

- Notes:
- 1) Steel fin furnished as .032 thick, painted black.
 - 2) NPT threads furnished on steel elements. Please use domestic fittings for proper installation.
 - 3) The ends can be provided chamfered for field welded fittings when specified.

Steam Bracket and BB Hanger

ELEMENT TUBE SIZE	CRADLE NO.	A MIN	A MAX
3/4" COPPER	2	7 3/8"	9 5/8"
1" COPPER	2	7 1/2"	9 3/4"
1 1/4" COPPER	2	7 5/8"	9 7/8"
1 1/4" STEEL	1	7"	9 1/4"

