

# VERSA-LINE

## Submittal

JVA-RD / JVB-RD  
Versa-Line  
Copper/Aluminum and  
Steel Element Ratings

# Specification

### JVA Slip Jointed Enclosure

#### ENCLOSURE:

STYLE: Flat Top, Rounded  
Outlet  
OUTLET: Stamped Louvers  
Pencil Proof

LENGTHS: 2' thru 8' in 6" Increments  
MAT'L:  16 Ga. CRS Std..  
FINISH:  Prime Finish Std.  
 Baked Enamel (Opt'l).  
 14 Ga. Aluminum (Opt'l)

#### ACCESSORIES:

JV Overlapping Type  
All accessories return to the wall at the bottom  
and have pre-punched holes for fastening to  
the wall.

#### ELEMENT:

TYPE:  Cu/Al (Mechanically  
Expanded)  
LENGTHS: 2'0" thru 12'6" in 1" Increments  
for 1" & 1-1/4" Cu.  
2' thru 8' in 1" Increments  
for 3/4" Cu.

One End Flared, Std.  
TYPE:  IPS Steel (Mechanically  
Expanded)  
LENGTHS: 2'0" thru 12'6" in 1" Increments  
 NPT Thread both Ends Std.  
 Beveled Ends for Field Weld  
See Catalog for Working  
Pressures

### JVB Slip Jointed Enclosure

#### BACKPLATE:

TYPE:  Partial B/P  
LENGTHS: 8' Only  
MAT'L:  20 Ga. Prepainted Std.  
 18 Ga. Galvannealed (Opt'l)  
TYPE:  Full Ht. B/P (Opt'l)  
LENGTHS: 2' thru 8' in 6" increments  
MAT'L:  20 Ga. Galvannealed (Opt'l)  
 18 Ga. Painted (Opt'l)

#### AIRSEAL:

1/8" x 3/8" Closed Cell (Opt'l)

#### BRACKETS:

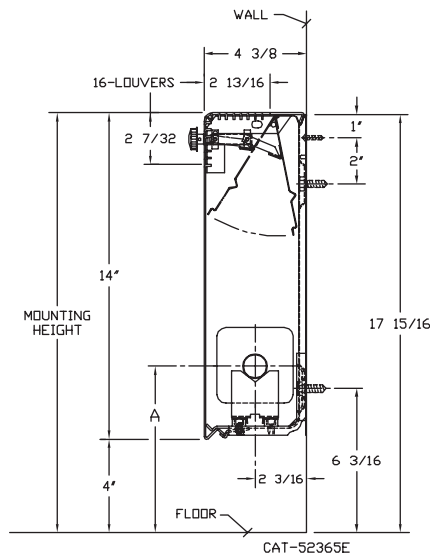
Water Brkt w/B.B.  
 Steam Brkt w/Brkt Mtd  
B.B. Hngr

#### DAMPER:

Damper Blades Factory  
Installed  
 Knob Damper (Opt'l)  
 Tamper Resistant (Opt'l)

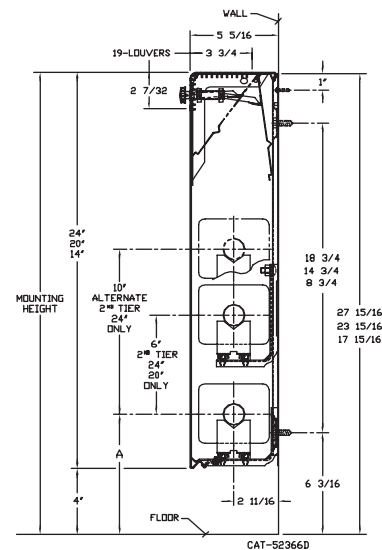
### JVA-RD14

ELEMENT TUBE SIZE	CRADLE NO.	A
3/4" COPPER	2	7"
1" COPPER	2	7 3/16"
1 1/4" COPPER	1	6 5/8"
1 1/4" STEEL	1	6 13/16"



### JVB-RD14 20 24

ELEMENT TUBE SIZE	CRADLE NO.	A
3/4" COPPER	2	7"
1" COPPER	2	7 3/16"
1 1/4" COPPER	2	7 5/16"
1 1/4" STEEL	2	7 1/2"
2" STEEL	1	7 1/4"



**STERLING**  
COMMERCIAL HYDRONIC PRODUCTS  
260 North Elm St., Westfield, MA 01085  
(413) 564-5535 Fax: (413) 562-8437  
www.sterlingheat.com

PROJECT: \_\_\_\_\_ DATE: \_\_\_\_\_  
LOCATION: \_\_\_\_\_  
ARCHITECT: \_\_\_\_\_  
ENGINEER: \_\_\_\_\_  
CONTRACTOR: \_\_\_\_\_  
PO NUMBER: \_\_\_\_\_

# STYLE "JVA-RD / JVB-RD" VERSA-LINE

## COPPER/ALUMINUM ELEMENT RATINGS

TUBE SIZE	CATALOG DESIGNATION	FIN SIZE	FIN PER FT.	FIN THICKNESS	ENCL DEPTH AND HEIGHT IN INCHES	TIERS AND CENTERS IN INCHES	MTG. HEIGHT IN INCHES	STEAM FACTOR 215°	HOT WATER (AVG.)					
									200°	190°	180°	170°	160°	150°
									FACTOR					
									1.00	.86	.78	.69	.61	.53
3/4"	C3/4-34	3-1/4" SQ.	40	.020"	14A	1	18	1240	1070	970	860	760	660	560
3/4"	C3/4-35	3-1/4" SQ.	50	.020"	"	"	"	1420	1220	1110	980	870	750	640
1"	C33	3-1/4" SQ.	32	.020"	"	"	"	1050	900	820	720	640	560	470
1"	C34	3-1/4" SQ.	40	.020"	"	"	"	1190	1020	930	820	730	630	540
1"	C35	3-1/4" SQ.	<b>50</b>	<b>.020"</b>	"	<b>1</b>	"	<b>1430</b>	<b>1230</b>	<b>1120</b>	<b>990</b>	<b>870</b>	<b>760</b>	<b>640</b>
1-1/4"	C133	3-1/4" SQ.	32	.020"	14A	1	18	1010	870	790	700	620	540	450
1-1/4"	C134	3-1/4" SQ.	40	.020"	"	"	"	1120	960	870	770	680	590	500
1-1/4"	C135	3-1/4" SQ.	50	.020"	"	"	"	1340	1150	1050	920	820	710	600
3/4"	C3/4-434	4-1/4" x 3-5/8"	40	.020"	14B	1	18	1690	1450	1320	1170	1030	900	760
					20B	1	24	1790	1540	1400	1240	1090	950	810
					"	2-6 CL	"	2490	2140	1940	1720	1520	1320	1120
					24B	1	28	1870	1610	1460	1290	1140	990	840
					"	2-6 CL	"	2590	2230	2020	1790	1580	1370	1170
3/4"	C3/4-435	4-1/4" x 3-5/8"	50	.020"	14B	1	18	1930	1660	1510	1330	1180	1020	870
					20B	1	24	2110	1810	1650	1460	1290	1120	950
					"	2-6 CL	"	2640	2270	2060	1820	1610	1400	1190
					24B	1	28	2210	1900	1720	1520	1350	1170	990
					"	2-6 CL	"	2820	2430	2200	1950	1720	1490	1270
1"	C433	4-1/4" x 3-5/8"	32	.020"	14B	1	18	1560	1340	1220	1080	950	830	700
					20B	1	24	1610	1380	1260	1110	980	850	720
					"	2-6 CL	"	2480	2130	1930	1710	1510	1310	1120
					24B	1	28	1650	1420	1290	1140	1010	870	740
					"	2-6 CL	"	2560	2200	2000	1770	1560	1360	1150
1"	C434	4-1/4" x 3-5/8"	40	.020"	14B	1	18	1770	1520	1380	1220	1080	940	800
					20B	1	24	1880	1620	1470	1300	1150	1000	850
					"	2-6 CL	"	2600	2240	2030	1790	1590	1380	1170
					24B	1	28	1950	1680	1520	1350	1190	1030	880
					"	2-6 CL	"	2720	2340	2120	1880	1660	1440	1220
1"	C435	4-1/4" x 3-5/8"	50	.020"	14B	1	18	2030	1750	1580	1400	1240	1080	910
					20B	1	24	2220	1910	1730	1530	1350	1180	1000
					"	2-6 CL	"	2770	2380	2160	1910	1690	1470	1250
					24B	1	28	2330	2000	1820	1610	1420	1230	1050
					"	2-6 CL	"	2970	2550	2320	2050	1810	1570	1340
1-1/4"	C1433	4-1/4" x 3-5/8"	32	.020"	14B	1	18	1530	1320	1190	1060	930	810	690
					20B	1	24	1590	1370	1240	1100	970	840	720
					"	2-6 CL	"	2470	2120	1930	1700	1510	1310	1110
					24B	1	28	1630	1400	1270	1120	990	860	730
					"	2-6 CL	"	2580	2220	2010	1780	1570	1370	1160
1-1/4"	C1433	4-1/4" x 3-5/8"	32	.020"	14B	1	18	1530	1320	1190	1060	930	810	690
					20B	1	24	1590	1370	1240	1100	970	840	720
					"	2-6 CL	"	2470	2120	1930	1700	1510	1310	1110
					24B	1	28	1630	1400	1270	1120	990	860	730
					"	2-6 CL	"	2580	2220	2010	1780	1570	1370	1160
1-1/4"	C1433	4-1/4" x 3-5/8"	32	.020"	14B	1	18	1530	1320	1190	1060	930	810	690
					20B	1	24	1590	1370	1240	1100	970	840	720
					"	2-6 CL	"	2470	2120	1930	1700	1510	1310	1110
					24B	1	28	1630	1400	1270	1120	990	860	730
					"	2-6 CL	"	2580	2220	2010	1780	1570	1370	1160
1-1/4"	C1433	4-1/4" x 3-5/8"	32	.020"	14B	1	18	1530	1320	1190	1060	930	810	690
					20B	1	24	1590	1370	1240	1100	970	840	720
					"	2-6 CL	"	2470	2120	1930	1700	1510	1310	1110
					24B	1	28	1630	1400	1270	1120	990	860	730
					"	2-6 CL	"	2580	2220	2010	1780	1570	1370	1160
1-1/4"	C1433	4-1/4" x 3-5/8"	32	.020"	14B	1	18	1530	1320	1190	1060	930	810	690
					20B	1	24	1590	1370	1240	1100	970	840	720
					"	2-6 CL	"	2470	2120	1930	1700	1510	1310	1110
					24B	1	28	1630	1400	1270	1120	990	860	730
					"	2-6 CL	"	2580	2220	2010	1780	1570	1370	1160

► **Bold, italicized units are**  **rated** ◀

# STYLE "JVA-RD / JVB-RD" VERSA-LINE

## COPPER/ALUMINUM ELEMENT RATINGS

TUBE SIZE	CATALOG DESIGNATION	FIN SIZE	FIN PER FT.	FIN THICKNESS	ENCL DEPTH AND HEIGHT IN INCHES	TIERS AND CENTERS IN INCHES	MTG. HEIGHT IN INCHES	STEAM 215° FACTOR 1.00	HOT WATER (AVG.)					
									200°	190°	180°	170°	160°	150°
									FACTOR					
									.86	.78	.69	.61	.53	.45
1-1/4"	C1434	4-1/4" x 3-5/8"	40	.020"	14B	1	18	1750	1510	1370	1210	1070	930	790
					20B	1	24	1850	1590	1440	1280	1130	980	830
					"	2-6 CL	"	2620	2250	2040	1810	1600	1390	1180
					24B	1	28	1920	1650	1500	1320	1170	1020	860
					"	2-6 CL	"	2750	2370	2150	1900	1680	1460	1240
					"	2-10 CL	"	2810	2420	2190	1940	1710	1490	1260
1-1/4"	C1435	4-1/4" x 3-5/8"	50	.020"	14B	1	18	2040	1750	1590	1410	1240	1080	920
					20B	1	24	2240	1930	1750	1550	1370	1190	1010
					"	2-6 CL	"	2730	2350	2130	1880	1670	1450	1230
					24B	1	28	2380	2050	1860	1640	1450	1260	1070
					"	2-6 CL	"	3000	2580	2340	2070	1830	1590	1350
					"	2-10 CL	"	3030	2610	2360	2090	1850	1610	1360
1"	C43	4-1/4" SQ.	32	.020"	14B	1	18	1710	1470	1330	1180	1040	910	770
					20B	1	24	1760	1510	1370	1210	1070	930	790
					"	2-6 CL	"	2720	2340	2120	1880	1660	1440	1220
					24B	1	28	1810	1560	1410	1250	1100	960	810
					"	2-6 CL	"	2810	2420	2190	1940	1710	1490	1260
					"	2-10 CL	"	2860	2460	2230	1970	1740	1520	1290
1"	C44	4-1/4" SQ.	40	.020"	14B	1	18	1940	1670	1510	1340	1180	1030	870
					20B	1	24	2070	1780	1610	1430	1260	1100	930
					"	2-6 CL	"	2850	2450	2220	1970	1740	1510	1280
					24B	1	28	2140	1840	1670	1480	1310	1130	960
					"	2-6 CL	"	2990	2570	2330	2060	1820	1580	1350
					"	2-10 CL	"	3130	2690	2440	2160	1910	1660	1410
1"	C45	4-1/4" SQ.	50	.020"	14B	1	18	2220	1910	1730	1530	1350	1180	1000
					20B	1	24	2430	2090	1900	1680	1480	1290	1090
					"	2-6 CL	"	3030	2610	2360	2090	1850	1610	1360
					24B	1	28	2550	2190	1990	1760	1560	1350	1150
					"	2-6 CL	"	3250	2800	2540	2240	1980	1720	1460
					"	2-10 CL	"	3330	2860	2600	2300	2030	1760	1500
1-1/4"	C143	4-1/4" SQ.	32	.020"	14B	1	18	1700	1460	1330	1170	1040	900	770
					20B	1	24	1740	1500	1360	1200	1060	920	780
					"	2-6 CL	"	2670	2300	2080	1840	1630	1420	1200
					24B	1	28	1780	1530	1390	1230	1090	940	800
					"	2-6 CL	"	2720	2340	2120	1880	1660	1440	1220
					"	2-10 CL	"	2800	2410	2180	1930	1710	1480	1260

# STYLE "JVA-RD / JVB-RD" VERSA-LINE

## COPPER/ALUMINUM ELEMENT RATINGS

TUBE SIZE	CATALOG DESIGNATION	FIN SIZE	FIN PER FT.	FIN THICKNESS	ENCL DEPTH AND HEIGHT IN INCHES	TIERS AND CENTERS IN INCHES	MTG. HEIGHT IN INCHES	STEAM 215° FACTOR 1.00	HOT WATER (AVG.)					
									200°	190°	180°	170°	160°	150°
									FACTOR					
									.86	.78	.69	.61	.53	.45
1-1/4"	C144	4-1/4" SQ.	40	.020"	14B	1	18	1950	1680	1520	1350	1190	1030	880
					20B	1	24	2090	1800	1630	1440	1270	1110	940
					"	2-6 CL	"	2810	2420	2190	1940	1710	1490	1260
					24B	1	28	2160	1860	1680	1490	1320	1140	970
					"	2-6 CL	"	2940	2530	2290	2030	1790	1560	1320
"	2-10 CL	"	3150	2710	2460	2170	1920	1670	1420					
1-1/4"	C145	4-1/4" SQ.	50	.020"	14B	1	18	2100	1810	1640	1450	1280	1110	950
					20B	1	24	2300	1980	1790	1590	1400	1220	1040
					"	2-6 CL	"	2940	2530	2290	2030	1790	1560	1320
					24B	1	28	2380	2050	1860	1640	1450	1260	1070
					"	2-6 CL	"	3060	2630	2390	2110	1870	1620	1380
"	2-10 CL	"	3180	2730	2480	2190	1940	1690	1430					

Note: Copper tube furnished flared one end standard.

## STEEL ELEMENT RATINGS

I.P.S. SIZE	CATALOG DESIGNATION	FIN SIZE	FIN PER FT.	FIN THICKNESS	ENCL DEPTH AND HEIGHT IN INCHES	TIERS AND CENTERS IN INCHES	MTG. HEIGHT IN INCHES	STEAM 215° FACTOR 1.00	HOT WATER (AVG.)					
									200°	190°	180°	170°	160°	150°
									FACTOR					
									.86	.78	.69	.61	.53	.45
1-1/4"	S133	3-1/4" SQ.	32	.032"	14A	1	18	990	850	770	680	600	520	450
1-1/4"	S134	3-1/4" SQ.	40	.032"	14A	1	18	1120	960	870	770	680	590	500
1-1/4"	S143	4-1/4" SQ.	32	.032"	14B	1	18	1420	1230	1110	990	870	760	640
					20B	1	24	1420	1230	1110	990	870	760	640
					"	2-6 CL	"	2240	1930	1750	1550	1370	1190	1000
					24B	1	28	1430	1230	1120	990	880	760	650
					"	2-6 CL	"	2290	1970	1790	1580	1400	1210	1030
"	2-10 CL	"	2340	2010	1820	1610	1430	1240	1050					
1-1/4"	S144	4-1/4" SQ.	40	.032"	14B	1	18	1540	1320	1200	1060	940	820	680
					20B	1	24	1620	1390	1260	1120	990	860	730
					"	2-6 CL	"	2400	2060	1850	1660	1460	1270	1080
					24B	1	28	1680	1440	1310	1160	1020	890	760
					"	2-6 CL	"	2510	2160	1960	1730	1530	1330	1130
"	2-10 CL	"	2630	2260	2050	1810	1600	1390	1180					
2"	S242	4-1/4" SQ.	25	.032"	14B	1	18	1230	1060	950	850	750	650	550
					20B	1	24	1240	1070	960	850	750	650	550
					"	2-6 CL	"	1940	1670	1510	1340	1180	1030	870
					24B	1	28	1250	1080	980	860	760	660	560
					"	2-6 CL	"	2000	1720	1560	1380	1220	1060	900
"	2-10 CL	"	2060	1770	1610	1420	1260	1090	930					
2"	S243	4-1/4" SQ.	32	.032"	14B	1	18	1420	1230	1110	990	870	760	640
					20B	1	24	1460	1260	1140	1010	890	770	660
					"	2-6 CL	"	2140	1840	1670	1480	1300	1130	960
					24B	1	28	1480	1270	1150	1020	900	780	670
					"	2-6 CL	"	2220	1890	1720	1520	1340	1170	990
"	2-10 CL	"	2280	1960	1780	1570	1390	1210	1030					

- Notes: 1) Steel fin furnished as .032 thick, painted black.  
 2) NPT threads furnished on steel elements. Please use domestic fittings for proper installation.  
 3) The ends can be provided chamfered for field welded fittings when specified.

### Steam Bracket and BB Hanger

ELEMENT TUBE SIZE	CRADLE NO.	A MIN	A MAX
3/4 COPPER	2	7 3/8	9 5/8
1" COPPER	2	7 1/2	9 3/4
1 1/4 COPPER	2	7 5/8	9 7/8
1 1/4 STEEL	1	7"	9 1/4

ELEMENT TUBE SIZE	CRADLE NO.	A MIN	A MAX
3/4 COPPER	2	7 3/8	8 3/4
1" COPPER	2	7 1/2	8 7/8
1 1/4 COPPER	2	7 5/8	9"
1 1/4 STEEL	2	7 7/8	9 1/4
2" STEEL	1	7 5/8	9"

