

TROUGH

Submittal

Style "TR"
Copper/Aluminum and
Steel Element Ratings

Specification

GRILLE TYPE:

STYLE : "TRC" "TRV"
LENGTHS: 2'0" thru 8'0" in 6" Increments
MATERIAL 14 Ga. C.R.S.
FINISH: Baked Primer
 Factory Baked Enamel
Optional

LINER: No Liner

Optional 20 Ga. Galv.
 Optional 18 Ga. C.R.S.
Black BE

BRACKETS: 1/8" Flat Stock
w/B.B. Std.

ELEMENT:

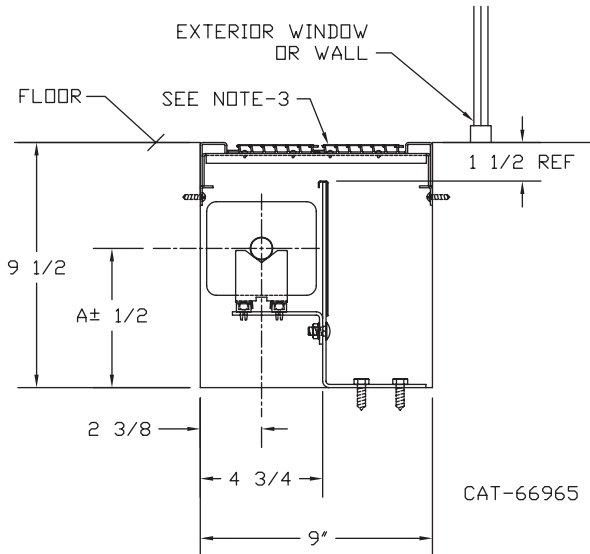
TYPE: Steel (Mechanically Expanded)
LENGTHS: 2'0" thru 12'6" in 1" Increments.
 NPT Threads Both Ends (standard)
 Beveled Ends For Field Weld
See Catalog for Working Pressures.

ELEMENT:

TYPE: Cu/Al (Mechanically Expanded)
LENGTHS: 2'0" thru 12'6" in 1" Increments.
3/4" Cu Tube Available up to 8'0" Max.
One End Flared, Std.
See Catalog for Working Pressures.

ELEMENT	TUBE/FIN MATERIAL	TUBE SIZE	FIN SIZE	FIN THK.	FINS/ FOOT	CRADLE NO	A	
							CLASSIC	VERSALINE
C3/4 435	CU/AL	3/4	4-1/4 x 3-5/8	.020	50	2	5-3/8	5-3/8
C45	CU/AL	1"	4-1/4 x 4-1/4	.020	50	2	5-9/16	5-9/16
C145	CU/AL	1-1/4	4-1/4 x 4-1/4	.020	50	2	5-11/16	5-11/16
S144-032	STL/STL	1-1/4	4-1/4 x 4-1/4	.020	40	2	5-7/8	4-7/8
S243-032	STL/STL	2"	4-1/4 x 4-1/4	.020	32	1	5-5/8	4-5/8

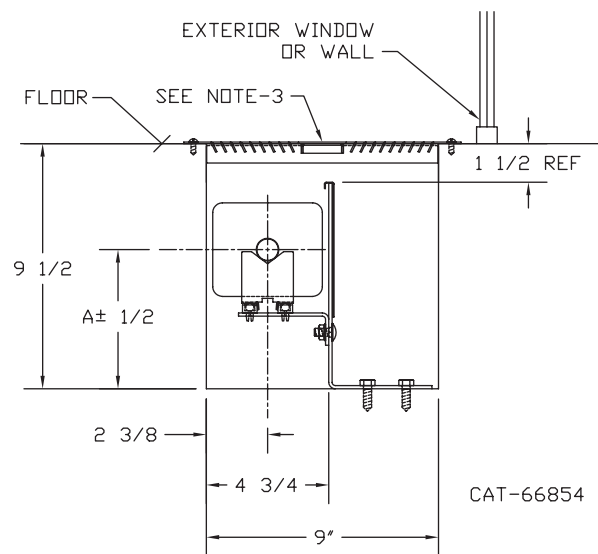
"TRC"
TROUGH CLASSIC



Notes:

1. Shown with C3/4-435 element.
2. Trough liner optional (not shown).
3. Classic grille by others, consult factory for availability.

"TRV"
TROUGH VERSALINE



Notes:

1. Shown with C3/4-435 element.
2. Trough liner optional (not shown).
3. Louvered grille by others, consult factory for availability.



260 North Elm St., Westfield, MA 01085
(413) 564-5535 Fax: (413) 562-8437
www.sterlingheat.com

PROJECT: _____ DATE: _____
LOCATION: _____
ARCHITECT: _____
ENGINEER: _____
CONTRACTOR: _____
PO NUMBER: _____

STYLE "TR" TROUGH

COPPER/ALUMINUM ELEMENT RATINGS

TUBE SIZE	CATALOG DESIGNATION	FIN SIZE	FIN PER FT.	FIN THICKNESS	TROUGH DEPTH AND HEIGHT IN INCHES	NUMBER OF ELEMENTS	ENTERING AIR TEMP F°	STEAM 215° FACTOR	HOT WATER (AVG.)					
									200°	190°	180°	170°	160°	150°
									FACTOR					
									1.00	.86	.78	.69	.61	.53
3/4"	C3/4 433	4-1/4" x 3-5/8"	32	20"	9-1/2 x 9	1	47°	1090	940	850	750	660	580	490
	C3/4 434		40	"	"	1	47°	1220	1050	950	840	740	650	550
	C3/4 435		50	"	"	1	47°	1330	1140	1040	920	810	700	600
1"	C 433	4-1/4" x 3-5/8"	32	20"	9-1/2 x 9	1	47°	1130	970	880	780	690	600	510
			40	"	"	1	47°	1270	1090	990	880	770	670	570
			50	"	"	1	47°	1390	1200	1080	960	850	740	630
1-1/4"	C 1433	4-1/4" x 3-5/8"	32	20"	9-1/2 x 9	1	47°	1100	950	860	760	670	580	500
	C 1434		40	"	"	1	47°	1250	1080	980	860	760	660	560
	C 1435		50	"	"	1	47°	1360	1170	1060	940	830	720	610
1"	C 43	4-1/4" x 4-1/4"	32	20"	9-1/2 x 9	1	47°	1240	1070	970	860	760	660	560
	C 44		40	"	"	1	47°	1400	1200	1090	970	850	740	630
	C 45		50	"	"	1	47°	1440	1240	1120	990	880	760	650
1-1/4"	C 143	4-1/4" x 4-1/4"	32	20"	9-1/2 x 9	1	47°	1210	1040	940	830	740	640	540
	C 144		40	"	"	1	47°	1380	1190	1080	950	840	730	620
	C 145		50	"	"	1	47°	1420	1220	1110	980	870	750	640

- NOTES:**
1. Ratings are based on 24 sq. in. of free area per lineal foot of air inlet and outlet each.
 2. To determine ratings with 65°F Entering Air Temperature, select the appropriate rating from the chart above and divide by 1.20.
 3. For systems using steam, consult factory.

STYLE "TR" TROUGH

STEEL ELEMENT RATINGS

TUBE SIZE	CATALOG DESIGNATION	FIN SIZE	FIN PER FT.	FIN THICKNESS	TROUGH DEPTH AND WIDTH IN INCHES	NUMBER OF ELEMENTS	ENTERING AIR TEMP F°	STEAM 215° FACTOR	HOT WATER (AVG.)					
									200°	190°	180°	170°	160°	150°
									FACTOR					
									1.00	.86	.78	.69	.61	.53
1-1/4"	S143	4-1/4" x 4-1/4"	32	.032"	9-1/2 x 9	1	47°	1090	940	850	750	660	580	490
	S144		40	"	"	1	47°	1230	1060	960	850	750	650	550
2"	S242	4-1/4" x 3-5/8"	25	.032"	9-1/2 x 9	1	47°	950	820	740	660	580	500	430
	S243		32	"	"	1	47°	1100	950	860	760	670	580	500

- NOTES:**
1. Ratings are based on 24 sq. in. of free area per lineal foot of air inlet and outlet each.
 2. To determine ratings with 65°F Entering Air Temperature, select the appropriate rating from the chart above and divide by 1.20.
 3. For systems using steam, consult factory.