

VERSA-LINE

Submittal

Bare Element "B"
Versa-Line
Copper/Aluminum and
Steel Element Ratings

Specification

Bare Element "B"

ELEMENT:

TYPE: Cu/Al (Mechanically Expanded)
LENGTHS: 2'-0" thru 12'-6" in 1" Increments
3/4" Cu Tube Available up to 8'-0" MAX.
One end Flared Std.
See Catalog for Working Pressures

BRACKETS:

B.B. Hanger Wall Mounted

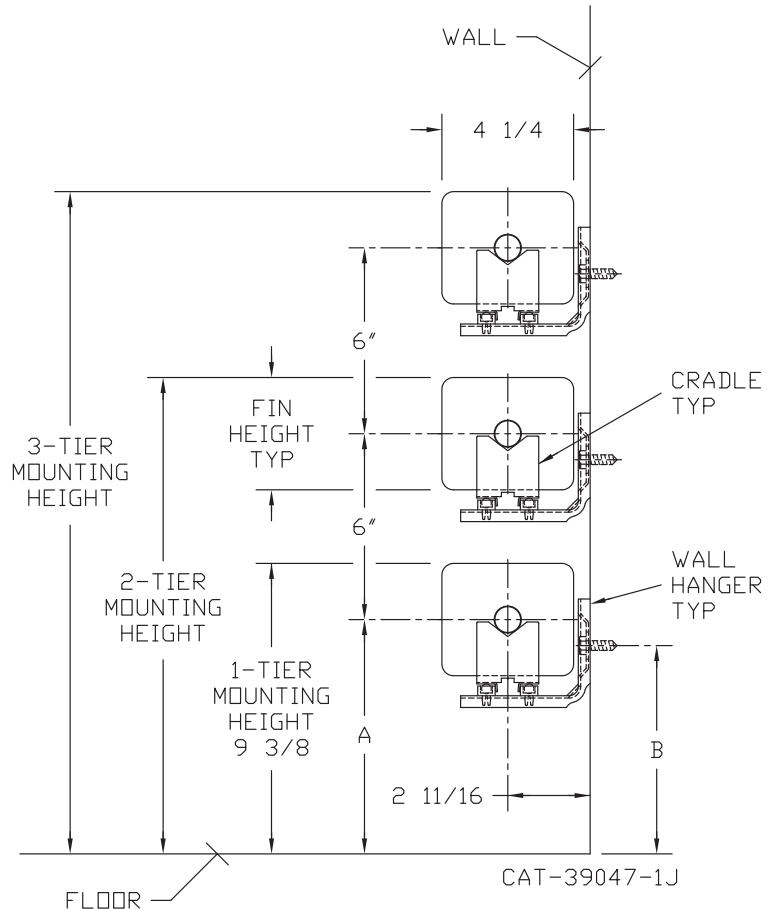
ELEMENT:

TYPE: Steel (Mechanically Expanded)
LENGTHS: 2'-0" thru 12'-6" in 1" Increments
 N.P.T. Threads Both Ends Std.
 Beveled Ends for Field Welded Fittings
See Catalog for Working Pressures

BRACKETS:

B.B. Hanger Wall Mounted

TUBE SIZE	FIN HEIGHT	CRADLE NUMBER	A	B
3/4" COPPER	3 5/8	2	7 9/16	6 3/4
	4 1/4	3A	7 1/4	6"
1" COPPER	3 5/8	2	7 9/16	6 9/16
	4 1/4		7 1/4	6 1/4
1 1/4" COPPER	3 5/8	2	7 9/16	6 7/16
	4 1/4		7 1/4	6 1/8
1" STEEL	4 1/4	2	7 1/4	6 1/8
1 1/4" STEEL	4 1/4	2	7 1/4	5 15/16
2" STEEL	4 1/4	1	7 1/4	6 3/16



COMMERCIAL HYDRONIC PRODUCTS

260 North Elm St., Westfield, MA 01085
(413) 564-5535 Fax: (413) 562-8437

www.sterlingheat.com

PROJECT: _____ DATE: _____

LOCATION: _____

ARCHITECT: _____

ENGINEER: _____

CONTRACTOR: _____

PO NUMBER: _____



STYLE "B" BARE ELEMENT

COPPER/ALUMINUM ELEMENT RATINGS

All ratings are based on 3 FPS velocity

TUBE SIZE	CATALOG DESIGNATION	FIN SIZE HEIGHT X WIDTH	FIN PER FT.	FIN THICKNESS IN INCHES	TIERS AND CENTERS IN INCHES	MTG. HEIGHT IN INCHES	STEAM 215° FACTOR	HOT WATER (AVG.)										
								200°	190°	180°	170°	160°	150°	140°	130°	120°	110°	100°
								CORRECTION FACTORS FOR AVERAGE WATER TEMPERATURES										
								1.00	.86	.78	.69	.61	.53	.45	.40	.33	.26	.20
3/4"	C3/4-433	3-5/8" X 4-1/4"	32	.020	1 2 @ 6 CL 3 @ 6 CL	9-3/8 15-3/8 21-3/8	1210 2130 2880	1040 1830 2480	940 1660 2250	830 1470 1990	740 1300 1760	640 1130 1530	540 960 1300	480 850 1150	400 700 950	310 550 750	240 430 580	180 320 430
3/4"	C3/4-434	3-5/8" X 4-1/4"	40	.020	1 2 @ 6 CL 3 @ 6 CL	9-3/8 15-3/8 21-3/8	1450 2490 3300	1250 2140 2840	1130 1940 2570	1000 1720 2280	880 1520 2010	770 1320 1750	650 1120 1490	580 1000 1320	480 820 1090	380 650 860	290 500 660	220 370 500
3/4"	C3/4-435	3-5/8" X 4-1/4"	50	.020	1 2 @ 6 CL 3 @ 6 CL	9-3/8 15-3/8 21-3/8	1600 2650 3450	1380 2280 2970	1250 2070 2690	1100 1830 2380	980 1620 2100	850 1400 1830	720 1190 1550	640 1060 1380	530 870 1140	420 690 900	320 530 690	240 400 520
1"	C433	3-5/8" X 4-1/4"	32	.020	1 2 @ 6 CL 3 @ 6 CL	9-3/8 15-3/8 21-3/8	1260 2220 3000	1080 1910 2580	980 1730 2340	870 1530 2070	770 1350 1830	670 1180 1590	570 1000 1320	500 890 1200	420 730 990	330 580 780	250 440 600	190 330 450
1"	C434	3-5/8" X 4-1/4"	40	.020	1 2 @ 6 CL 3 @ 6 CL	9-3/8 15-3/8 21-3/8	1410 2420 3200	1210 2080 2750	1100 1890 2500	970 1670 2210	860 1480 1950	750 1280 1700	630 1090 1440	560 970 1280	470 800 1060	370 630 830	280 480 640	210 360 480
1"	C435	3-5/8" X 4-1/4"	50	.020	1 2 @ 6 CL 3 @ 6 CL	9-3/8 15-3/8 21-3/8	1600 2640 3450	1380 2270 2970	1250 2060 2690	1100 1820 2380	980 1610 2100	850 1400 1830	720 1190 1550	640 1060 1380	530 870 1140	420 690 900	320 530 690	240 400 520
1-1/4"	C1433	3-5/8" X 4-1/4"	32	.020	1 2 @ 6 CL 3 @ 6 CL	9-3/8 15-3/8 21-3/8	1310 2310 3130	1130 1990 2690	1020 1800 2440	900 1590 2160	800 1410 1910	690 1220 1660	590 1040 1410	520 920 1250	430 760 1030	340 600 810	260 460 630	200 350 470
1-1/4"	C1434	3-5/8" X 4-1/4"	40	.020	1 2 @ 6 CL 3 @ 6 CL	9-3/8 15-3/8 21-3/8	1440 2470 3260	1240 2120 2800	1120 1930 2540	990 1700 2250	880 1510 1990	760 1310 1730	650 1110 1470	580 990 1300	480 820 1080	370 640 850	290 490 650	220 370 490
1-1/4"	C1435	3-5/8" X 4-1/4"	50	.020	1 2 @ 6 CL 3 @ 6 CL	9-3/8 15-3/8 21-3/8	1600 2650 3460	1380 2280 2980	1250 2070 2700	1100 1830 2390	980 1620 2110	850 1400 1830	720 1190 1560	640 1060 1380	530 870 1140	420 690 900	320 530 690	240 400 520
3/4"	C3/4 43	4-1/4" SQ.	32	.020	1 2 @ 6 CL 3 @ 6 CL	9-3/8 15-3/8 21-3/8	1280 2260 3060	1100 1940 2630	1000 1760 2390	880 1560 2110	780 1380 1870	680 1200 1620	580 1020 1380	510 900 1220	420 750 1010	330 590 800	260 450 610	190 340 460
3/4"	C3/4 44	4-1/4" SQ.	40	.020	1 2 @ 6 CL 3 @ 6 CL	9-3/8 15-3/8 21-3/8	1460 2390 3230	1260 2060 2780	1140 1860 2520	1010 1650 2230	890 1460 1970	770 1270 1710	660 1080 1450	580 960 1290	480 790 1070	380 620 840	290 480 650	220 360 480
3/4"	C3/4 45	4-1/4" SQ.	50	.020	1 2 @ 6 CL 3 @ 6 CL	9-3/8 15-3/8 21-3/8	1640 2620 3430	1410 2250 2950	1280 2040 2680	1130 1810 2370	1000 1600 2090	870 1390 1820	740 1180 1540	660 1050 1370	540 860 1130	430 680 890	330 520 690	250 390 510
1"	C43	4-1/4" SQ.	32	.020	1 2 @ 6 CL 3 @ 6 CL	9-3/8 15-3/8 21-3/8	1340 2370 3230	1150 2040 2780	1050 1850 2520	920 1640 2230	820 1450 1970	710 1260 1710	600 1070 1450	540 950 1290	440 780 1070	350 620 840	270 470 650	200 360 480
1"	C44	4-1/4" SQ.	40	.020	1 2 @ 6 CL 3 @ 6 CL	9-3/8 15-3/8 21-3/8	1490 2490 3320	1280 2140 2860	1160 1940 2590	1030 1720 2290	910 1520 2030	790 1320 1760	670 1120 1490	600 1000 1330	490 820 1100	390 650 860	300 500 660	220 370 500
1"	C45	4-1/4" SQ.	50	.020	1 2 @ 6 CL 3 @ 6 CL	9-3/8 15-3/8 21-3/8	1680 2650 3460	1440 2280 2980	1310 2070 2700	1160 1830 2390	1020 1620 2110	890 1400 1830	760 1190 1560	670 1060 1380	550 870 1140	440 690 900	340 530 690	250 400 520
1-1/4"	C143	4-1/4" SQ.	32	.020	1 2 @ 6 CL 3 @ 6 CL	9-3/8 15-3/8 21-3/8	1400 2470 3360	1200 2120 2890	1090 1930 2620	970 1700 2320	850 1510 2050	740 1310 1780	630 1110 1510	560 990 1340	460 820 1110	360 640 870	280 490 670	210 370 500
1-1/4"	C144	4-1/4" SQ.	40	.020	1 2 @ 6 CL 3 @ 6 CL	9-3/8 15-3/8 21-3/8	1660 2680 3490	1430 2300 3000	1290 2090 2720	1150 1850 2410	1010 1630 2130	880 1420 1850	750 1210 1570	660 1070 1400	550 880 1150	430 700 910	330 540 700	250 400 520
1-1/4"	C145	4-1/4" SQ.	50	.020	1 2 @ 6 CL 3 @ 6 CL	9-3/8 15-3/8 21-3/8	1710 2600 3200	1470 2120 2750	1330 1920 2500	1180 1700 2210	1040 1500 1950	910 1310 1700	770 1110 1480	680 980 1280	560 810 1060	440 640 830	340 490 640	260 370 480

Note: Copper tube furnished flared one end standard.

STYLE "B" BARE ELEMENT

STEEL ELEMENT RATINGS

All ratings are based on 3 FPS velocity

I.P.S. SIZE	CATALOG DESIGNATION	FIN SIZE HEIGHT X WIDTH	FIN PER FT.	FIN THICKNESS IN INCHES	TIERS AND CENTERS IN INCHES	MTG. HEIGHT IN INCHES	STEAM 215° FACTOR	HOT WATER (AVG.)											
								200°	190°	180°	170°	160°	150°	140°	130°	120°	110°	100°	
								CORRECTION FACTORS FOR AVERAGE WATER TEMPERATURES											
								1.00	.86	.78	.69	.61	.53	.45	.40	.33	.26	.20	.15
1"	S43	4-1/4" SQ.	32	.032	1	9-3/8"	1320	1140	1030	910	810	700	590	530	440	340	260	200	
					2 @ 6 CL	15-3/8"	2320	2000	1810	1600	1420	1230	1040	930	770	600	460	350	
					3 @ 6 CL	21-3/8"	3050	2620	2380	2100	1860	1620	1370	1220	1010	790	610	460	
1"	S44	4-1/4" SQ.	40	.032	1	9-3/8"	1490	1280	1160	1030	910	790	670	600	490	390	300	220	
					2 @ 6 CL	15-3/8"	2450	2110	1910	1690	1490	1300	1100	980	810	640	490	370	
					3 @ 6 CL	21-3/8"	3180	2730	2480	2190	1940	1690	1430	1270	1050	830	640	480	
1"	S45	4-1/4" SQ.	50	.032	1	9-3/8"	1580	1360	1230	1090	960	840	710	630	520	410	320	240	
					2 @ 6 CL	15-3/8"	2510	2160	1960	1730	1530	1330	1130	1000	830	650	500	380	
					3 @ 6 CL	21-3/8"	3230	2780	2520	2230	1970	1710	1450	1290	1070	840	650	480	
1-1/4"	S143	4-1/4" SQ.	32	.032	1	9-3/8"	1310	1130	1020	900	800	690	590	520	430	340	260	200	
					2 @ 6 CL	15-3/8"	2300	1980	1790	1590	1400	1220	1040	920	760	600	460	350	
					3 @ 6 CL	21-3/8"	3030	2610	2360	2090	1850	1610	1360	1210	1000	790	610	450	
1-1/4"	S144	4-1/4" SQ.	40	.032	1	9-3/8"	1480	1270	1150	1020	900	780	670	590	490	380	300	220	
					2 @ 6 CL	15-3/8"	2440	2100	1900	1680	1490	1290	1100	980	810	630	490	370	
					3 @ 6 CL	21-3/8"	3170	2730	2470	2190	1930	1680	1430	1270	1050	820	630	480	
1-1/4"	S145	4-1/4" SQ.	50	.032	1	9-3/8"	1550	1330	1210	1070	950	820	700	620	510	400	310	230	
					2 @ 6 CL	15-3/8"	2460	2120	1920	1700	1500	1300	1110	980	810	640	490	370	
					3 @ 6 CL	21-3/8"	3170	2730	2470	2190	1930	1680	1430	1270	1050	820	630	480	
2"	S242	4-1/4" SQ.	25	.032	1	9-3/8"	1140	980	890	790	700	600	510	460	380	300	230	170	
					2 @ 6 CL	15-3/8"	2030	1750	1580	1400	1240	1080	910	810	670	530	410	300	
					3 @ 6 CL	21-3/8"	2700	2320	2110	1860	1650	1430	1220	1080	890	700	540	410	
2"	S243	4-1/4" SQ.	32	.032	1	9-3/8"	1320	1140	1030	910	810	700	590	530	440	340	260	200	
					2 @ 6 CL	15-3/8"	2230	1920	1740	1540	1360	1180	1000	890	740	580	450	330	
					3 @ 6 CL	21-3/8"	2910	2500	2270	2010	1780	1540	1310	1160	960	760	580	440	

- Notes: 1) Steel fins furnished as .032 thick, painted black.
 2) NPT threads furnished on steel elements. Please use domestic fittings for proper installation.
 3) The ends can be provided chamfered for field welded fittings when specified.

► **Bold, italicized units are**  **rated** ◀