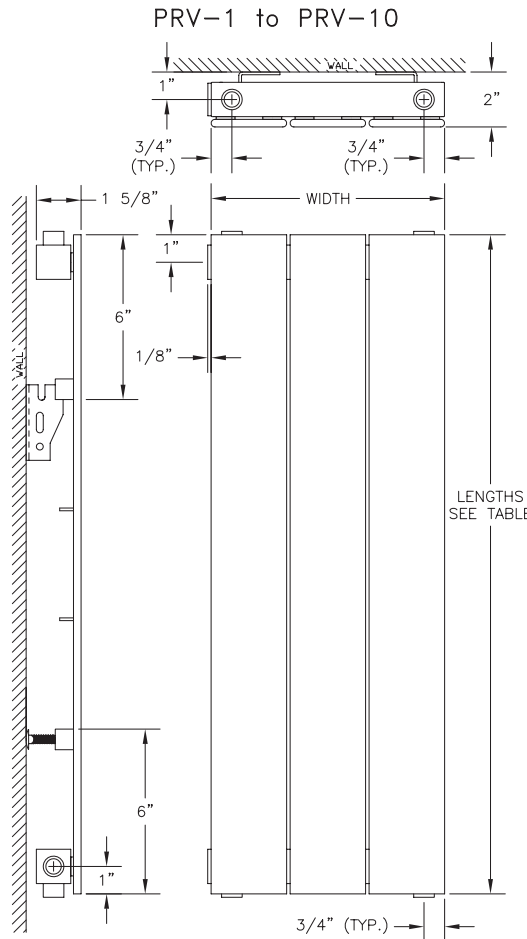


# PANEL RADIATOR

Submittal

PRV-1

## Specification



| MODEL  | # OF TUBES | WIDTH (IN.) | LENGTHS IN 2" INCREMENTS |
|--------|------------|-------------|--------------------------|
| PRV-1  | 1          | 2 3/4       | 2FT TO 20FT              |
| PRV-2  | 2          | 5 3/4       | 2FT TO 19FT              |
| PRV-3  | 3          | 8 5/8       | 2FT TO 19FT              |
| PRV-4  | 4          | 11 1/2      | 2FT TO 18FT              |
| PRV-5  | 5          | 14 3/8      | 2FT TO 18FT              |
| PRV-6  | 6          | 17 1/4      | 2FT TO 17FT              |
| PRV-7  | 7          | 20 1/4      | 2FT TO 17FT              |
| PRV-8  | 8          | 23 1/8      | 2FT TO 16FT              |
| PRV-9  | 9          | 26 1/8      | 2FT TO 16FT              |
| PRV-10 | 10         | 29          | 2FT TO 15FT              |

**NOTES:**

1. UNIT SHOWN WITH 1/2" NPT SIDE AND BOTTOM CONNECTIONS FOR DIMENSIONAL PURPOSES ONLY. REFER TO PIPE CONNECTION SHEET FOR CONNECTION LOCATIONS AND SIZES OFFERED.

CAT-75577A

| MODEL TYPE | BTU/Ft/Hr @ LISTED AWT & 65°f EAT |        |        |        |        |        |        |        |        |
|------------|-----------------------------------|--------|--------|--------|--------|--------|--------|--------|--------|
|            | 215° F                            | 190° F | 180° F | 170° F | 160° F | 150° F | 140° F | 130° F | 120° F |
| PRV 01     | 200                               | 157    | 141    | 125    | 110    | 95     | 80     | 67     | 54     |
| PRV 02     | 399                               | 313    | 281    | 249    | 219    | 189    | 161    | 133    | 107    |
| PRV 03     | 599                               | 470    | 421    | 374    | 329    | 284    | 241    | 200    | 161    |
| PRV 04     | 798                               | 627    | 562    | 499    | 438    | 379    | 322    | 267    | 214    |
| PRV 05     | 998                               | 783    | 702    | 624    | 548    | 473    | 402    | 334    | 268    |
| PRV 06     | 1198                              | 940    | 843    | 748    | 657    | 568    | 483    | 400    | 322    |
| PRV 07     | 1397                              | 1097   | 983    | 873    | 767    | 663    | 563    | 467    | 375    |
| PRV 08     | 1597                              | 1253   | 1124   | 998    | 876    | 757    | 643    | 534    | 429    |
| PRV 09     | 1796                              | 1410   | 1264   | 1122   | 986    | 852    | 724    | 601    | 483    |
| PRV 10     | 1996                              | 1566   | 1405   | 1247   | 1095   | 947    | 808    | 667    | 536    |



**STERLING**

COMMERCIAL HYDRONIC PRODUCTS

260 North Elm St., Westfield, MA 01085

(413) 564-5535 Fax: (413) 562-8437

www.sterlingheat.com

PROJECT: \_\_\_\_\_ DATE: \_\_\_\_\_

LOCATION: \_\_\_\_\_

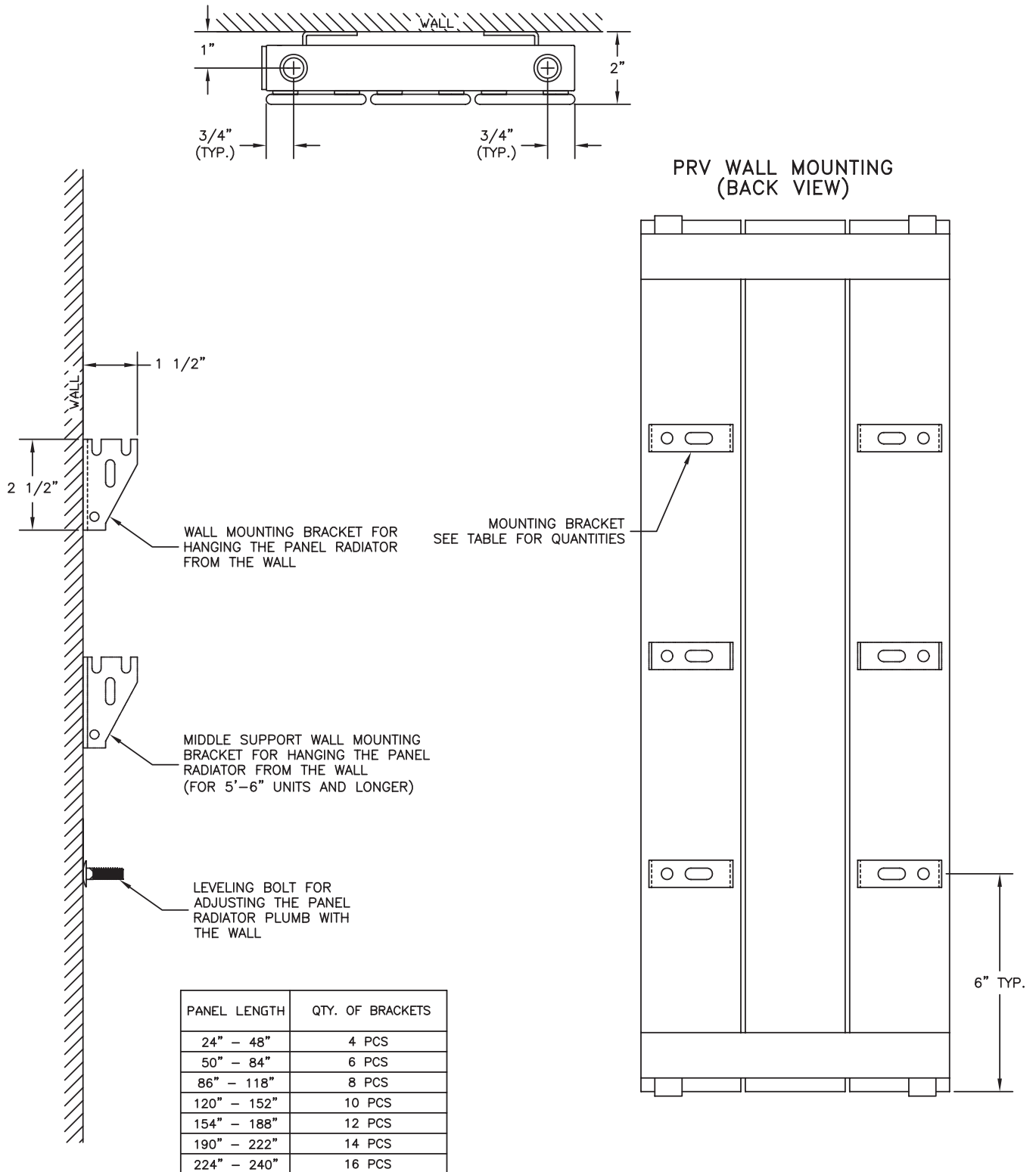
ARCHITECT: \_\_\_\_\_

ENGINEER: \_\_\_\_\_

CONTRACTOR: \_\_\_\_\_

PO NUMBER: \_\_\_\_\_

# TYPICAL WALL MOUNTED INSTALLATION

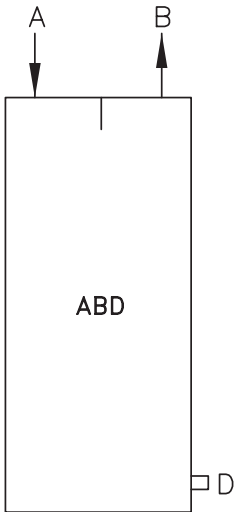


- (2) LEVELING BOLTS SUPPLIED WITH EACH UNIT 6 TUBES AND LESS
- (3) LEVELING BOLTS SUPPLIED WITH EACH UNIT 7 TUBES AND MORE

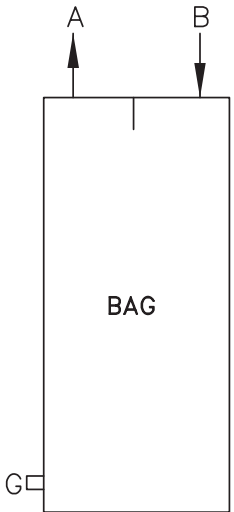
CAT-75591B

# PRV STANDARD PIPING OPTIONS

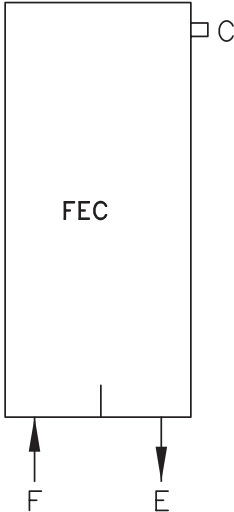
## PRV PIPING OPTIONS



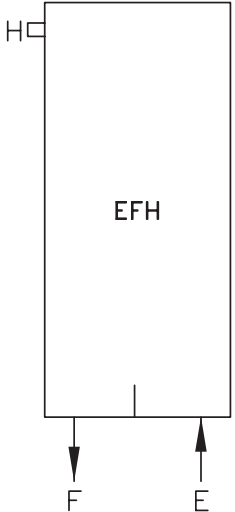
LEFT SUPPLY



RIGHT SUPPLY

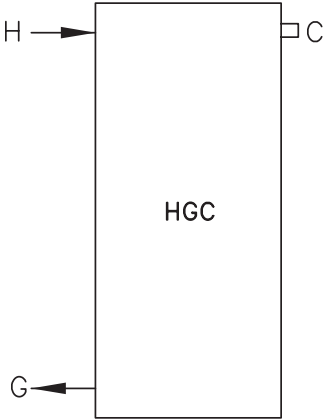


LEFT SUPPLY

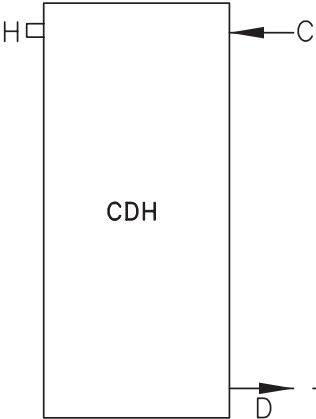


RIGHT SUPPLY

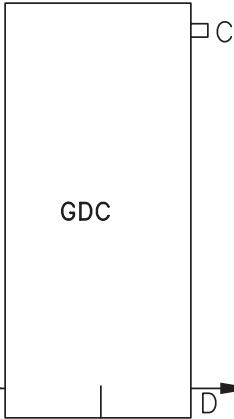
(VENT IS NOT REQUIRED ON UNITS WITH TOP SUPPLY/RETURN, UNITS SUPPLIED WITH DRAIN PLUG,)



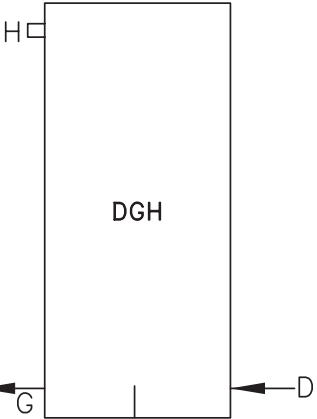
LEFT SUPPLY



RIGHT SUPPLY



LEFT SUPPLY



RIGHT SUPPLY

## Model PRV

# PANEL RADIATOR SPECIFICATIONS

### Specifications

Provide steel panel radiator elements of lengths and in locations as indicated, and of capacities, style, and having accessories as scheduled. The wall-hung vertical heating panel radiation shall be of one-piece all-welded steel construction, consisting of flattened water tubes welded to headers at the top and bottom.

All radiator header pipes are square 0.109" minimum wall thickness. The headers shall include all necessary inlet, outlet and vent connections as required. Standard connection sizes are ½" NPT tapered thread for supply and return piping. Internal baffling is provided where required for proper water flow. Option 29, ¾" NPT connections are available at an additional cost, when specified.

The radiant heating panels shall be available in heights from 2'-0" to 20'-0" in two inch even increments without the need for splicing. Appropriate wall mounting brackets shall be provided with the radiators, but additional wall bracing (if required) is to be provided by the installing contractor. Panel radiation expansion shall not exceed 1/64" per foot of radiation at 215°F. The installer shall provide adequate expansion compensation for each radiator.

### Pressure Ratings:

Pressure ratings for the radiation shall be as follows:

LOW (Standard)- .048" minimum wall thickness. Working pressure 56-PSI maximum, Test Pressure-74 PSI maximum

**OR**

MEDIUM (Optional)- .058" minimum wall thickness. Working pressure 85-PSI maximum, Test Pressure-110 PSI maximum

**OR**

HIGH (Optional)- .078" minimum wall thickness. Working pressure 128-PSI maximum, Test Pressure 184 PSI maximum

### Finishes:

The panel radiation shall be cleaned and phosphatized in preparation for the powder coat finish. The radiation is then finish painted with a gloss powder coat finish, for a total paint thickness of 2-3 mils (0.002" - 0.003"). The color shall be selected from Sterling's standard commercial colors. Optional custom colors shall be available at additional cost when specified.

### Warranty:

A 5-Year Limited Warranty covers all Sterling panel radiators.

### Options:

Option 19, ¾" NPT connections are available at an additional cost when specified.