

GUARDIAN

Submittal

Style "GSBS-P"
Slope Top Enclosures
Copper/Aluminum &
Steel Element Ratings

Specification

ENCLOSURE:

- STYLE : "GSBS-P"
- OUTLET: Slope Partially Perforated
- LENGTHS: 2' thru 8' in 6" Increments
- MATERIAL 14 Ga. C.R.S. Std.
 12 Ga. C.R.S. Opt'l.
- FINISH: Baked Primer
 Factory Baked Powder Opt'l.

- ACCESSORIES:** All overlapping, extend to wall at top. Bottom returns to wall, holes provided for fasteners.
- 14 Ga. Std.
 - 12 Ga. Opt'l.

ELEMENT:

- TYPE: Cu/Al (Mechanically Expanded)
- LENGTHS: 2'0" thru 12'6" in 1" Increments.
- 3/4" Cu Tube Available up to 8'0" Max.
- One End Flared, Std.
- See Catalog for Working Pressures.

ELEMENT:

- TYPE: Steel (Mechanically Expanded)
- LENGTHS: 2'0" thru 12'6" in 1" Increments.
- NPT Threads Both Ends (standard)
- Beveled Ends for Field Weld
- See Catalog for Working Pressures.

BACKPLATE:

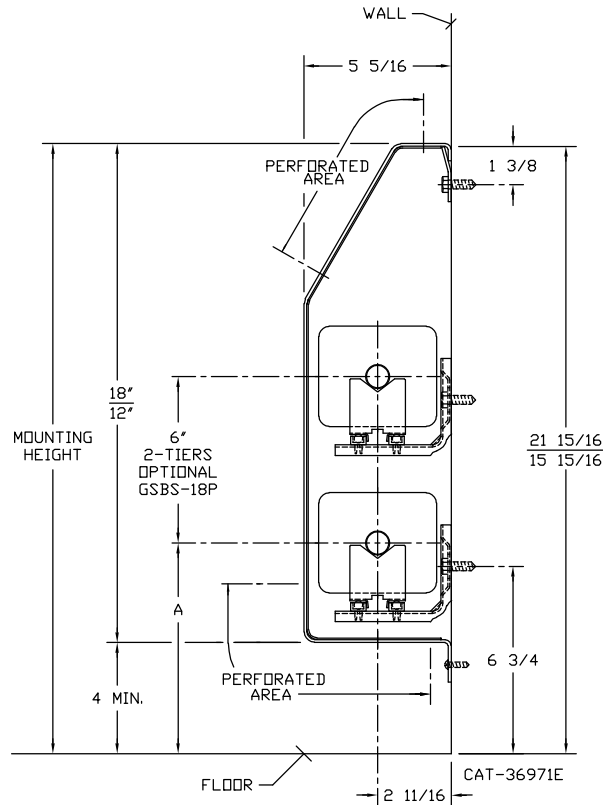
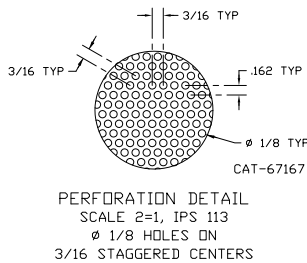
- TYPE: Partial Backplate
- LENGTHS: 8' Only
- MATERIAL: 14 Ga. Painted Std.
 12 Ga. Opt'l.

- TYPE: Full Backplate
- LENGTHS: 2' thru 8' in 6" Increments
- MATERIAL: 14 Ga. Painted Std.
 12 Ga. Opt'l.

- BRACKETS:** Wall Mtd B.B. Hanger

GSBS-12P GSBS-18P

ELEMENT TUBE SIZE	FIN HEIGHT	CRADLE	A
3/4" COPPER	3-5/8"	2	7-9/16
3/4" COPPER	4-1/4"	3A	7-15/16
1" COPPER	BOTH	2	7-3/4
1-1/4" COPPER	BOTH	2	7-7/8
1" STEEL	4-1/4"	2	7-7/8
1-1/4" STEEL	4-1/4"	2	8-1/16
2" STEEL	4-1/4"	1	7-13/16



STERLING
COMMERCIAL HYDRONIC PRODUCTS
260 North Elm St., Westfield, MA 01085
(413) 564-5535 Fax: (413) 562-8437
www.sterlingheat.com



PROJECT: _____ DATE: _____
 LOCATION: _____
 ARCHITECT: _____
 ENGINEER: _____
 CONTRACTOR: _____
 PO NUMBER: _____

STYLE "GSBS-P"

COPPER/ALUMINUM ELEMENT RATINGS

TUBE SIZE	CATALOG DESIGNATION	FIN SIZE	FIN PER FT.	FIN THICKNESS	ENCL DEPTH AND HEIGHT IN INCHES	TIERS AND CENTERS IN INCHES	MTG. HEIGHT IN INCHES	STEAM 215° FACTOR	HOT WATER (AVG.)					
									200°	190°	180°	170°	160°	150°
									FACTOR					
1.00									.86	.78	.69	.61	.53	.45
3/4"	C3/4-434	4-1/4" x 3-5/8"	40	.020" A	12B†	1	16	1310	1130	1020	900	800	690	590
					18B†	1	22	1550	1330	1210	1070	950	820	700
					18B†	2-6 CL	22	2270	1950	1770	1570	1380	1200	1020
3/4"	C3/4-435	4-1/4" x 3-5/8"	▶50	.020" A	12B†	1	16	1430	1230	1120	990	870	760	640
					18B†	1	22	1790	1540	1400	1240	1090	950	810
					18B†	2-6 CL	22	2400	2060	1870	1660	1460	1270	1080
1"	C44	4-1/4" SQ.	40	.020" A	12B†	1	16	1490	1280	1160	1030	910	790	670
					18B†	1	22	1730	1490	1350	1190	1060	920	780
					18B†	2-6 CL	22	2390	2060	1860	1650	1460	1270	1080
1"	C45	4-1/4" SQ.	50	.020" A	12B†	1	16	1570	1350	1220	1080	960	830	710
					18B†	1	22	1980	1700	1540	1370	1210	1050	890
					18B†	2-6 CL	22	2260	1940	1760	1560	1380	1200	1020
1-1/4"	C144	4-1/4" SQ.	▶40	.020" A	12B†	1	16	1470	1260	1150	1010	900	780	660
					18B†	1	22	1700	1460	1330	1170	1040	900	770
					18B†	2-6 CL	22	2350	2020	1830	1620	1430	1250	1060
1-1/4"	C145	4-1/4" SQ.	▶50	.020" A	12B†	1	16	1540	1320	1200	1060	940	820	690
					18B†	1	22	1940	1670	1510	1340	1180	1030	870
					18B†	2-6 CL	22	2220	1910	1730	1530	1350	1180	1000

†Standard enclosure dimension is 5-5/16".

Consult factory for Guardian enclosures with 4-3/8" or 3-9/16" offset.

▶ **Bold, italicized units are**  **rated** ◀

STYLE "GSBS-P"

STEEL ELEMENT RATINGS

TUBE SIZE	CATALOG DESIGNATION	FIN SIZE	FIN PER FT.	FIN THICKNESS	ENCL DEPTH AND HEIGHT IN INCHES	TIERS AND CENTERS IN INCHES	MTG. HEIGHT IN INCHES	STEAM 215° FACTOR	HOT WATER (AVG.)					
									200°	190°	180°	170°	160°	150°
									FACTOR					
1.00									.86	.78	.69	.61	.53	.45
1-1/4"	S144	4-1/4" SQ.	40	.032" A	12B†	1	16	1280	1100	1000	880	780	680	580
					18B†	1	22	1380	1190	1080	950	840	730	620
					18B†	2-6 CL	22	2140	1840	1670	1480	1310	1130	960

†Standard enclosure dimension is 5-5/16".

Consult factory for Guardian enclosures with 4-3/8" or 3-9/16" offset.