

GUARDIAN

Submittal

Style "GSBF-P"
Flat Top Enclosures
Element Ratings

Partially Perforated Enclosure

Specification

ENCLOSURE:

- STYLE : "GSBF-P"
- OUTLET: Flat Top Partially Perforated
- LENGTHS: 2' thru 8' in 6" Increments
- MATERIAL 14 Ga. C.R.S. Std.
 12 Ga. C.R.S. Opt'l.
- FINISH: Baked Primer
 Factory Baked Powder Opt'l.

- ACCESSORIES:** All overlapping, extend to wall at top. Bottom returns to wall, holes provided for fasteners.
- 14 Ga. Std.
 - 12 Ga. Opt'l.

ELEMENT:

- TYPE: Cu/Al (Mechanically Expanded)
- LENGTHS: 2'0" thru 12'6" in 1" Increments.
- 3/4" Cu Tube Available up to 8'0" Max.
- One End Flared, Std.
- See Catalog for Working Pressures.

ELEMENT:

- TYPE: Steel (Mechanically Expanded)
- LENGTHS: 2'0" thru 12'6" in 1" Increments.
- NPT Threads Both Ends (standard)
- Beveled Ends for Field Weld
- See Catalog for Working Pressures.

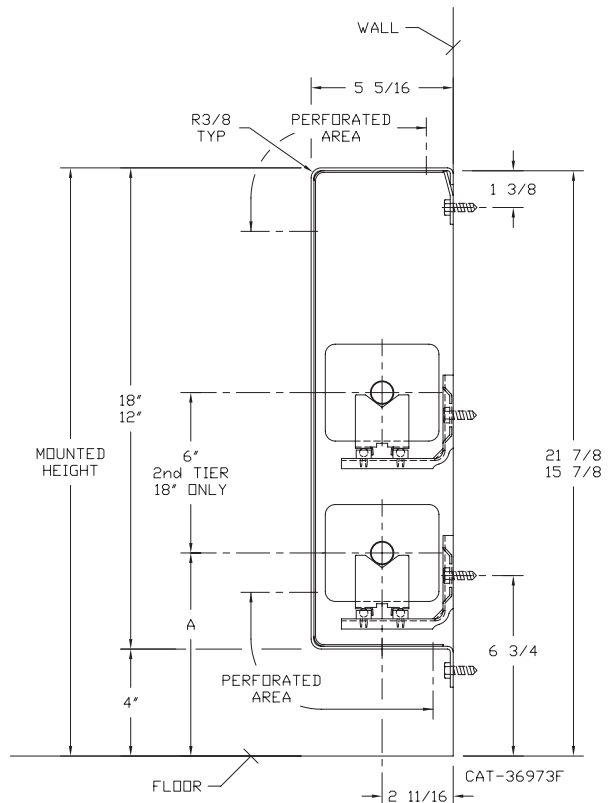
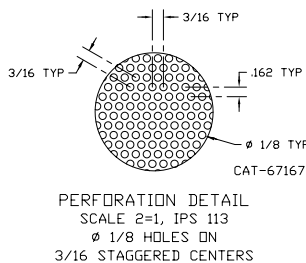
BACKPLATE:

- TYPE: Partial Backplate
- LENGTHS: 8' Only
- MATERIAL: 14 Ga. Painted Std.
 12 Ga. Opt'l.
- TYPE: Full Backplate
- LENGTHS: 2' thru 8' in 6" Increments
- MATERIAL: 14 Ga. Painted Std.
 12 Ga. Opt'l.

- BRACKETS:** Wall Mtd B.B. Hanger

GSBF-12P GSBF-18P

| ELEMENT TUBE SIZE | FIN SIZE HEIGHT x WIDTH | CRADLE NUMBER | A |
|-------------------|-------------------------|---------------|---------|
| 3/4" COPPER | 3 5/8 x 4 1/4 | 2 | 7 9/16 |
| 3/4" COPPER | 4 1/4 x 4 1/4 | 3A | 7 15/16 |
| 1" COPPER | 3 5/8 x 4 1/4 | 2 | 7 3/4 |
| 1" COPPER | 4 1/4 x 4 1/4 | 2 | 7 3/4 |
| 1 1/4" COPPER | 3 5/8 x 4 1/4 | 2 | 7 7/8 |
| 1 1/4" COPPER | 4 1/4 x 4 1/4 | 2 | 7 7/8 |
| 1" STEEL | 4 1/4 x 4 1/4 | 2 | 7 7/8 |
| 1 1/4" STEEL | 4 1/4 x 4 1/4 | 2 | 8 1/16 |
| 2" STEEL | 4 1/4 x 4 1/4 | 1 | 7 13/16 |



COMMERCIAL HYDRONIC PRODUCTS
260 North Elm St., Westfield, MA 01085
(413) 564-5535 Fax: (413) 562-8437
www.sterlingheat.com



PROJECT: _____ DATE: _____
 LOCATION: _____
 ARCHITECT: _____
 ENGINEER: _____
 CONTRACTOR: _____
 PO NUMBER: _____

