

# GUARDIAN

## Submittal

Style "GSBF-P"  
Flat Top Enclosures  
Copper/Aluminum &  
Steel Element Ratings

### Specification

**ENCLOSURE:**

- STYLE : "GSBF-P"
- OUTLET: Flat Top Partially Perforated
- LENGTHS: 2' thru 8' in 6" Increments
- MATERIAL  14 Ga. C.R.S. Std.  
 12 Ga. C.R.S. Opt'l.
- FINISH:  Baked Primer  
 Factory Baked Powder Opt'l.

- ACCESSORIES:** All overlapping, extend to wall at top. Bottom returns to wall, holes provided for fasteners.
- 14 Ga. Std.
  - 12 Ga. Opt'l.

**ELEMENT:**

- TYPE: Cu/Al (Mechanically Expanded)
- LENGTHS: 2'0" thru 12'6" in 1" Increments.
- 3/4" Cu Tube Available up to 8'0" Max.
- One End Flared, Std.
- See Catalog for Working Pressures.

**ELEMENT:**

- TYPE: Steel (Mechanically Expanded)
- LENGTHS: 2'0" thru 12'6" in 1" Increments.
- NPT Threads Both Ends (standard)
- Beveled Ends for Field Weld
- See Catalog for Working Pressures.

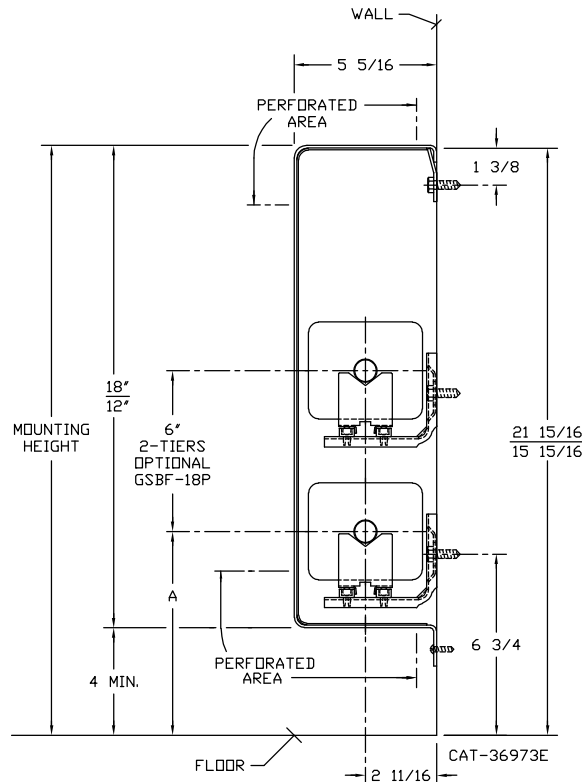
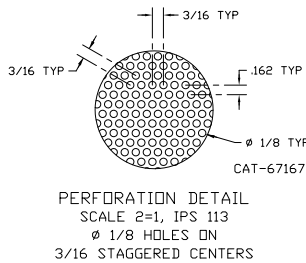
**BACKPLATE:**

- TYPE:  Partial Backplate
- LENGTHS: 8' Only
- MATERIAL:  14 Ga. Painted Std.  
 12 Ga. Opt'l.
- TYPE:  Full Backplate
- LENGTHS: 2' thru 8' in 6" Increments
- MATERIAL:  14 Ga. Painted Std.  
 12 Ga. Opt'l.

- BRACKETS:**  Wall Mtd B.B. Hanger

GSBF-12P     GSBF-18P

ELEMENT TUBE SIZE	FIN HEIGHT	CRADLE	A
3/4" COPPER	3-5/8"	2	7-9/16
3/4" COPPER	4-1/4"	3A	7-15/16
1" COPPER	BOTH	2	7-3/4
1-1/4" COPPER	BOTH	2	7-7/8
1" STEEL	4-1/4"	2	7-7/8
1-1/4" STEEL	4-1/4"	2	8-1/16
2" STEEL	4-1/4"	1	7-13/16



**STERLING**  
COMMERCIAL HYDRONIC PRODUCTS  
260 North Elm St., Westfield, MA 01085  
(413) 564-5535 Fax: (413) 562-8437  
www.sterlingheat.com



PROJECT: \_\_\_\_\_ DATE: \_\_\_\_\_  
 LOCATION: \_\_\_\_\_  
 ARCHITECT: \_\_\_\_\_  
 ENGINEER: \_\_\_\_\_  
 CONTRACTOR: \_\_\_\_\_  
 PO NUMBER: \_\_\_\_\_

## STYLE "GSBF-P"

## COPPER/ALUMINUM ELEMENT RATINGS

TUBE SIZE	CATALOG DESIGNATION	FIN SIZE	FIN PER FT.	FIN THICKNESS	ENCL DEPTH AND HEIGHT IN INCHES	TIERS AND CENTERS IN INCHES	MTG. HEIGHT IN INCHES	STEAM 215° FACTOR	HOT WATER (AVG.)					
									200°	190°	180°	170°	160°	150°
									FACTOR					
								1.00	.86	.78	.69	.61	.53	.45
3/4"	C3/4-434	4-1/4" x 3-5/8"	40	.020" A	12B†	1	16	1200	1030	940	830	730	640	540
					18B†	1	22	1400	1200	1090	970	850	740	630
					18B†	2-6 CL	22	2080	1790	1620	1440	1270	1100	940
3/4"	C3/4-435	4-1/4" x 3-5/8"	50	.020" A	12B†	1	16	1350	1160	1050	930	820	720	610
					18B†	1	22	1610	1380	1260	1110	980	850	720
					18B†	2-6 CL	22	2290	1970	1790	1580	1400	1210	1030
1"	C44	4-1/4" SQ.	40	.020" A	12B†	1	16	1360	1170	1060	940	830	720	610
					18B†	1	22	1550	1330	1210	1070	950	820	700
					18B†	2-6 CL	22	2299	1970	1790	1580	1400	1210	1030
1"	C45	4-1/4" SQ.	50	.020" A	12B†	1	16	1470	1260	1150	1010	900	780	660
					18B†	1	22	1770	1520	1380	1220	1080	940	800
					18B†	2-6 CL	22	2150	1850	1680	1480	1310	1140	970
1-1/4"	C144	4-1/4" SQ.	40	.020" A	12B†	1	16	1340	1150	1050	920	820	710	600
					18B†	1	22	1530	1320	1190	1060	930	810	690
					18B†	2-6 CL	22	2250	1940	1760	1550	1370	1190	1010
1-1/4"	C145	4-1/4" SQ.	50	.020" A	12B†	1	16	1450	1250	1130	1000	880	770	650
					18B†	1	22	1740	1500	1360	1200	1060	920	780
					18B†	2-6 CL	22	2110	1810	1650	1460	1290	1120	950

†Standard enclosure dimension is 5-5/16".

Consult factory for Guardian enclosures with 4-3/8" or 3-9/16" offset.

## STYLE "GSBF-P"

## STEEL ELEMENT RATINGS

TUBE SIZE	CATALOG DESIGNATION	FIN SIZE	FIN PER FT.	FIN THICKNESS	ENCL DEPTH AND HEIGHT IN INCHES	TIERS AND CENTERS IN INCHES	MTG. HEIGHT IN INCHES	STEAM 215° FACTOR	HOT WATER (AVG.)					
									200°	190°	180°	170°	160°	150°
									FACTOR					
								1.00	.86	.78	.69	.61	.53	.45
1-1/4"	S144	4-1/4" SQ.	40	.032" A	12B†	1	16	1150	990	900	790	700	610	520
					18B†	1	22	1230	1060	960	850	750	650	550
					18B†	2-6 CL	22	1980	1700	1540	1370	1210	1050	890

†Standard enclosure dimension is 5-5/16".

Consult factory for Guardian enclosures with 4-3/8" or 3-9/16" offset.