

GUARDIAN

Submittal

Style "GSBF"
Flat Top Enclosures
Copper/Aluminum &
Steel Element Ratings

Specification

ENCLOSURE:

- STYLE : "GSBF"
- OUTLET: Flat Top Fully Perforated
- LENGTHS: 2' thru 8' in 6" Increments
- MATERIAL 14 Ga. C.R.S. Std.
 12 Ga. C.R.S. Opt'l.
- FINISH: Baked Primer
 Factory Baked Powder Opt'l.

- ACCESSORIES:** All overlapping, extend to wall at top. Bottom returns to wall, holes provided for fasteners.
- 14 Ga. Std.
 - 12 Ga. Opt'l.

ELEMENT:

- TYPE: Cu/Al (Mechanically Expanded)
- LENGTHS: 2'0" thru 12'6" in 1" Increments.
- 3/4" Cu Tube Available up to 8'0" Max.
- One End Flared, Std.
- See Catalog for Working Pressures.

ELEMENT:

- TYPE: Steel (Mechanically Expanded)
- LENGTHS: 2'0" thru 12'6" in 1" Increments.
- NPT Threads Both Ends (standard)
- Beveled Ends for Field Weld
- See Catalog for Working Pressures.

BACKPLATE:

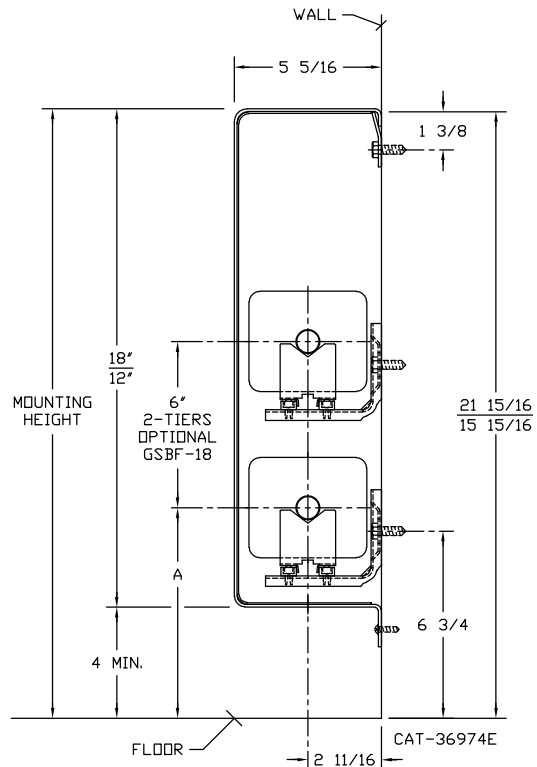
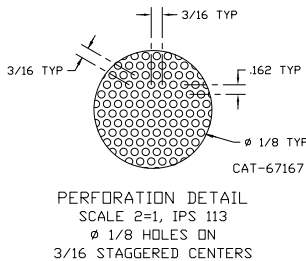
- TYPE: Partial Backplate
- LENGTHS: 8' Only
- MATERIAL: 14 Ga. Painted Std.
 12 Ga. Opt'l.

- TYPE: Full Backplate
- LENGTHS: 2' thru 8' in 6" Increments
- MATERIAL: 14 Ga. Painted Std.
 12 Ga. Opt'l.

- BRACKETS:** Wall Mtd B.B. Hanger

GSBF-12 **GSBF-18**

ELEMENT TUBE SIZE	FIN HEIGHT	CRADLE	A
3/4" COPPER	3-5/8"	2	7-9/16
3/4" COPPER	4-1/4"	3A	7-15/16
1" COPPER	BOTH	2	7-3/4
1-1/4" COPPER	BOTH	2	7-7/8
1" STEEL	4-1/4"	2	7-7/8
1-1/4" STEEL	4-1/4"	2	8-1/16
2" STEEL	4-1/4"	1	7-13/16




STERLING
COMMERCIAL HYDRONIC PRODUCTS
260 North Elm St., Westfield, MA 01085
(413) 564-5535 Fax: (413) 562-8437
www.sterlingheat.com



PROJECT: _____ DATE: _____
 LOCATION: _____
 ARCHITECT: _____
 ENGINEER: _____
 CONTRACTOR: _____
 PO NUMBER: _____

STYLE "GSBF"

COPPER/ALUMINUM ELEMENT RATINGS

TUBE SIZE	CATALOG DESIGNATION	FIN SIZE	FIN PER FT.	FIN THICKNESS	ENCL DEPTH AND HEIGHT IN INCHES	TIERS AND CENTERS IN INCHES	MTG. HEIGHT IN INCHES	STEAM 215° FACTOR	HOT WATER (AVG.)					
									200°	190°	180°	170°	160°	150°
									FACTOR					
									1.00	.86	.78	.69	.61	.53
3/4"	C3/4-434	4-1/4" x 3-5/8"	40	.020" A	12B†	1	16	1140	980	890	790	700	600	510
					18B†	1	22	1170	1010	910	810	710	620	530
					18B†	2-6 CL	22	2040	1750	1590	1410	1240	1080	920
3/4"	C3/4-435	4-1/4" x 3-5/8"	50	.020" A	12B†	1	16	1270	1090	990	880	770	670	570
					18B†	1	22	1290	1110	1010	980	790	680	580
					18B†	2-6 CL	22	2280	1960	1780	1570	1390	1210	1030
1"	C44	4-1/4" SQ.	40	.020" A	12B†	1	16	1310	1130	1020	900	800	690	590
					18B†	1	22	1330	1140	1040	920	810	700	600
					18B†	2-6 CL	22	2450	2110	1910	1690	1490	1300	1100
1"	C45	4-1/4" SQ.	50	.020" A	12B†	1	16	1380	1190	1080	950	840	730	620
					18B†	1	22	1420	1220	1110	980	870	750	640
					18B†	2-6 CL	22	2460	2120	1920	1700	1500	1300	1110
1-1/4"	C144	4-1/4" SQ.	40	.020" A	12B†	1	16	1280	1100	1000	880	780	680	580
					18B†	1	22	1310	1130	1020	900	800	690	590
					18B†	2-6 CL	22	2410	2070	1880	1660	1470	1280	1080
1-1/4"	C145	4-1/4" SQ.	50	.020" A	12B†	1	16	1360	1170	1060	940	830	720	610
					18B†	1	22	1400	1200	1090	970	850	740	630
					18B†	2-6 CL	22	2420	2080	1890	1670	1480	1280	1090

†Standard enclosure dimension is 5-5/16".

Consult factory for Guardian enclosures with 4-3/8" or 3-9/16" offset.

STYLE "GSBF"

STEEL ELEMENT RATINGS

TUBE SIZE	CATALOG DESIGNATION	FIN SIZE	FIN PER FT.	FIN THICKNESS	ENCL DEPTH AND HEIGHT IN INCHES	TIERS AND CENTERS IN INCHES	MTG. HEIGHT IN INCHES	STEAM 215° FACTOR	HOT WATER (AVG.)					
									200°	190°	180°	170°	160°	150°
									FACTOR					
									1.00	.86	.78	.69	.61	.53
1-1/4"	S144	4-1/4" SQ.	40	.032" A	12B†	1	16	1120	960	870	770	680	590	500
					18B†	1	22	1160	1000	900	800	710	610	520
					18B†	2-6 CL	22	2080	1790	1620	1440	1270	1110	940

†Standard enclosure dimension is 5-5/16".

Consult factory for Guardian enclosures with 4-3/8" or 3-9/16" offset.