

# ELECTRICAL DRAFT BARRIER HEATERS

## MODEL LBT/LBF AND LBT/LBF-PD

### Submittal

Project	Engineer	Customer
<input style="width: 95%;" type="text"/>	<input style="width: 95%;" type="text"/>	<input style="width: 95%;" type="text"/>

Item	Quantity	Catalog No.	Length	Volts	Watts	Amps	Built-In Controls	Color
<input style="width: 95%;" type="text"/>	<input style="width: 95%;" type="text"/>	<input style="width: 95%;" type="text"/>	<input style="width: 95%;" type="text"/>	<input style="width: 95%;" type="text"/>	<input style="width: 95%;" type="text"/>	<input style="width: 95%;" type="text"/>	<input style="width: 95%;" type="text"/>	<input style="width: 95%;" type="text"/>

### LB FEATURES

**LBT – Bottom intake, top discharge**  
**LBF – Front intake, top discharge**  
**Two piece all aluminum, 12 gauge front and back.**

- Extended backs and fronts available.
- 4" junction boxes at each end.
- 3/4" EMT raceway standard.
- 1/2" and 3/4" knockouts.
- Control packages available.
- In house engineering and design assistance.
- Custom selection of convector lengths from 2' to 12' length in 1/16" increments.
- Multiple heater sections on one common back.
- UL and CUL listed.
- Full length thermal limit switch.
- Clear anodized finish available, 8 durable Decorator painted finishes.
- Custom finishes specified by the architect are available.
- Available with optional 2" pedestals and finished back.
- 1/4" pencil proof discharge grill.
- Accessories include: end caps, wall trims, splice plates, corners and blank sections.
- Cabinet size is 5"W x 7"H.
- Available with built in thermostat or disconnect.
- Wattages from 100 to 500 watts per foot. (Except 120 volt\*)



Heat sections from 2' to 10' are available. All heaters shall contain 3/4" EMT built in raceway with factory wiring to provide field wiring from either end when optional controls are not included.

### LBT, LBF, LB-PD

#### Suggested Engineering Specifications

Model LB Architectural Draft Barriers shall be 7" high and 5" wide. The front cover shall be 12 gauge extruded aluminum construction suitable for Architectural, Commercial and Industrial use with 1/4" pencil proof intake and discharge grills. The one piece cover shall be extruded for maximum strength and shall be available in lengths up to 12'.

The cover shall be linear mount to the 12 gauge heater back with no visible fasteners. The 12 gauge heater back shall be suitable for mullion to mullion mounting.

LB-PD series shall have 2" adjustable pedestals and the heater back will be painted to match the front cover.

Standard painted finishes or clear anodizing shall be provided as specified by the architect. Color matching to architects specifications are available as optional finishes.

1/2" and 3/4" knockouts shall be provided in the side and rear of the heater junction box to permit end to end wiring. All blank sections shall be fully enclosed to allow branch circuit wiring. All heaters shall contain a full length thermal overhear protector with automatic reset. Wattages shall be available from 100 to 500 watts per foot. Heating elements shall be tubular stainless steel or aluminum tubing with aluminum fins mechanically bonded to ensure efficient heat transfer.

Element fin temperature shall not exceed 350 degrees Fahrenheit to ensure long element life. Elements shall be center anchored and free floating in nylon bushings at each end.

Control sections include 6" or 12" with: disconnect, thermostat, pneumatic relay, transformer relay, relay, fused disconnect or duplex receptacle. Standard built-in controls shall include thermostats (single and double pole) and disconnect switches.

Built-in controls shall be tamper proof and shall be adjustable with a blade screwdriver through the discharge louver.

All heaters are Underwriters Laboratories listed.

### Standard Painted Finishes

Black, Bronze, Gray, Tan, White, Standard Gray, Beige, Silver

### Furniture, Drapes & Carpeting

Proper operation of heater requires free circulation of room air through the heating element. Keep electrical cords, drapes, rugs and other furnishings away from the heater.

Furniture should be placed no closer than 4" from the heater.

Drapes should clear the top of the heater by at least 12". Or, if you prefer floor length drapes, they should clear the floor by 3", and the minimum clearance from the back fold to the front cover should be at least 4".

For best results when carpeting is involved in the installation, allow clearance for carpet to be installed under the heaters and corners. Rugs can be placed up to the heater provided that they are not of a thickness that would block the air-intake at the bottom of the heater.

### CONTROLS BUILT-IN

#### LB-ITS (thermostat)

Single pole rated 22 amps, 120 – 227 volt. Adjustable through discharge grill, mounted in right hand junction box.

#### LB-ITD

Same as Above (double pole.)

#### LB-IDS (disconnect)

Double pole, rated 20 amps, 120 – 277 volt. Adjustable through discharge grill, mounted in left junction box.

### CONTROL SECTIONS LB-CS

#### 6" Control Section

6" long and can be added to total enclosure length. Contains 1 or 2 controls. Right or left hand mounting (right hand is standard).

#### 12" Control Section

12" long and can be added to total enclosure length. Contains 1, 2 or 3 controls. Right or left hand mounting (right hand is standard).

#### PR (power relay), PE (Pneumatic relay), MDR (mercury relay)

Single or double pole (specify). Rated 25 amps, Low or line volt coils (specify).

#### TR (transformer relay)

Single pole, rated 19 amps, 120 – 277 volt. Contacts rated up to 277 volt (specify). Coils are 24 or 120 volt (specify).

#### DR (duplex receptacle)

Mounted on front cover. Rated 15 amps, 120 volt. Snap in type control section mounting.

#### FDS (fused disconnect)

Fuse block with fuse and 20 amp disconnect switch. Control section mounting.

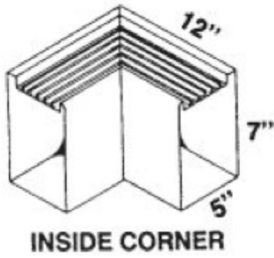
### ACCESSORIES

Cat. No.	Description
LB-WT	Wall Trim (specify 4" or 6")
LB-SP	Splice Plate 2"
LB-EC	End Cap (specify right or left)
LB-IC	Inside Corner (specify miter degree)
LB-OC	Outside Corner (specify miter degree)
LB-BS	Blank Section
LBT	Bottom Intake, Top Discharge
LBF	Front Intake, Top Discharge

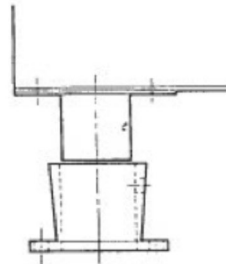
Catalog Number	Wattage		BTU/Hr	Length	Voltage
	Nominal	Total			
LB-2150	150	300	1023	2'	120*, 208, 240, 277
LB-2188	188	376	1275	2'	
LB-2200	200	400	1364	2'	
LB-2250	250	500	1706	2'	
LB-2350	350	700	2387	2'	
LB-2375	375	750	2550	2'	
LB-2500	500	1000	3410	2'	120*, 208, 240, 277
LB-3100	100	300	1032	3'	
LB-3125	125	375	1280	3'	
LB-3150	150	450	1535	3'	
LB-3188	188	564	1914	3'	
LB-3200	200	600	2406	3'	
LB-3250	250	750	2560	3'	
LB-3350	350	1050	3580	3'	
LB-3375	375	1125	3828	3'	
LB-3500	500	1500	5720	3'	
LB-4100	100	400	1364	4'	120*, 208, 240, 277
LB-4125	125	500	1706	4'	
LB-4150	150	600	2046	4'	
LB-4188	188	752	2550	4'	
LB-4200	200	800	2728	4'	
LB-4250	250	1000	3414	4'	
LB-4350	350	1400	4774	4'	
LB-4375	375	1500	5100	4'	
LB-4500	500	2000	6826	4'	
LB-5100	100	500	1706	5'	
LB-5125	125	625	2130	5'	
LB-5150	150	750	2560	5'	
LB-5188	188	940	3189	5'	
LB-5200	200	1000	3414	5'	
LB-5250	250	1250	4266	5'	
LB-5350	350	1750	5973	5'	
LB-5375	375	1875	6378	5'	
LB-5500	500	2500	8532	5'	
LB-6100	100	600	2046	6'	120*, 208, 240, 277
LB-6125	125	750	2560	6'	
LB-6150	150	900	3069	6'	
LB-6188	188	1128	3825	6'	
LB-6200	200	1200	4092	6'	
LB-6250	250	1500	5120	6'	
LB-6350	350	2100	7161	6'	
LB-6375	375	2250	7650	6'	
LB-6500	500	3000	10230	6'	
LB-7100	100	700	2387	7'	
LB-7125	125	875	2966	7'	
LB-7150	150	1050	3581	7'	
LB-7188	188	1316	4464	7'	
LB-7200	200	1400	4774	7'	
LB-7250	250	1750	5973	7'	
LB-7350	350	2450	8354	7'	
LB-7375	375	2625	8928	7'	
LB-7500	500	3500	11935	7'	
LB-8100	100	800	2728	8'	120*, 208, 240, 277
LB-8125	125	1000	3413	8'	
LB-8150	150	1200	4092	8'	
LB-8188	188	1504	5100	8'	
LB-8200	200	1600	5456	8'	
LB-8250	250	2000	6826	8'	
LB-8350	350	2800	9548	8'	
LB-8375	375	3000	10200	8'	
LB-8500	500	4000	13640	8'	
LB-9100	100	900	3071	9'	
LB-9125	125	1125	3840	9'	
LB-9150	150	1350	4606	9'	
LB-9188	188	1692	5758	9'	
LB-9200	200	1800	6141	9'	
LB-9250	250	2250	7678	9'	
LB-9350	350	3150	10741	9'	
LB-9375	375	3375	11516	9'	
LB-9500	500	4500	15345	9'	
LB-10100	100	1000	3413	10'	120*, 208, 240, 277
LB-10125	125	1250	4266	10'	
LB-10150	150	1500	5120	10'	
LB-10188	188	1880	6375	10'	
LB-10200	200	2000	6826	10'	
LB-10250	250	2500	8532	10'	
LB-10350	350	3500	11935	10'	
LB-10375	375	3750	12750	10'	
LB-10500	500	5000	17050	10'	

NOTE: Consult factory for 120 volt applications.

# CORNERS, FILLERS, BLANK SECTIONS & END CAPS



INSIDE CORNER



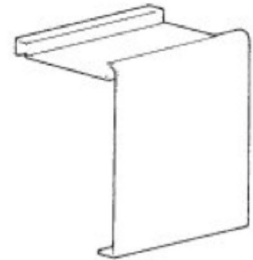
CAST PEDESTAL



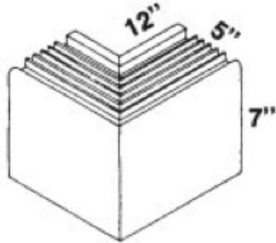
END CAP



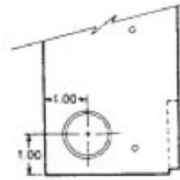
SPLICE PLATE



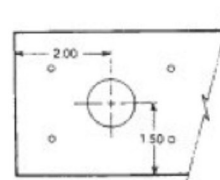
WALL TRIM



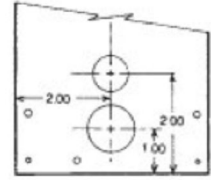
OUTSIDE CORNER



SIDE VIEW



BOTTOM VIEW  
Pedestal Unit Only



BACK VIEW