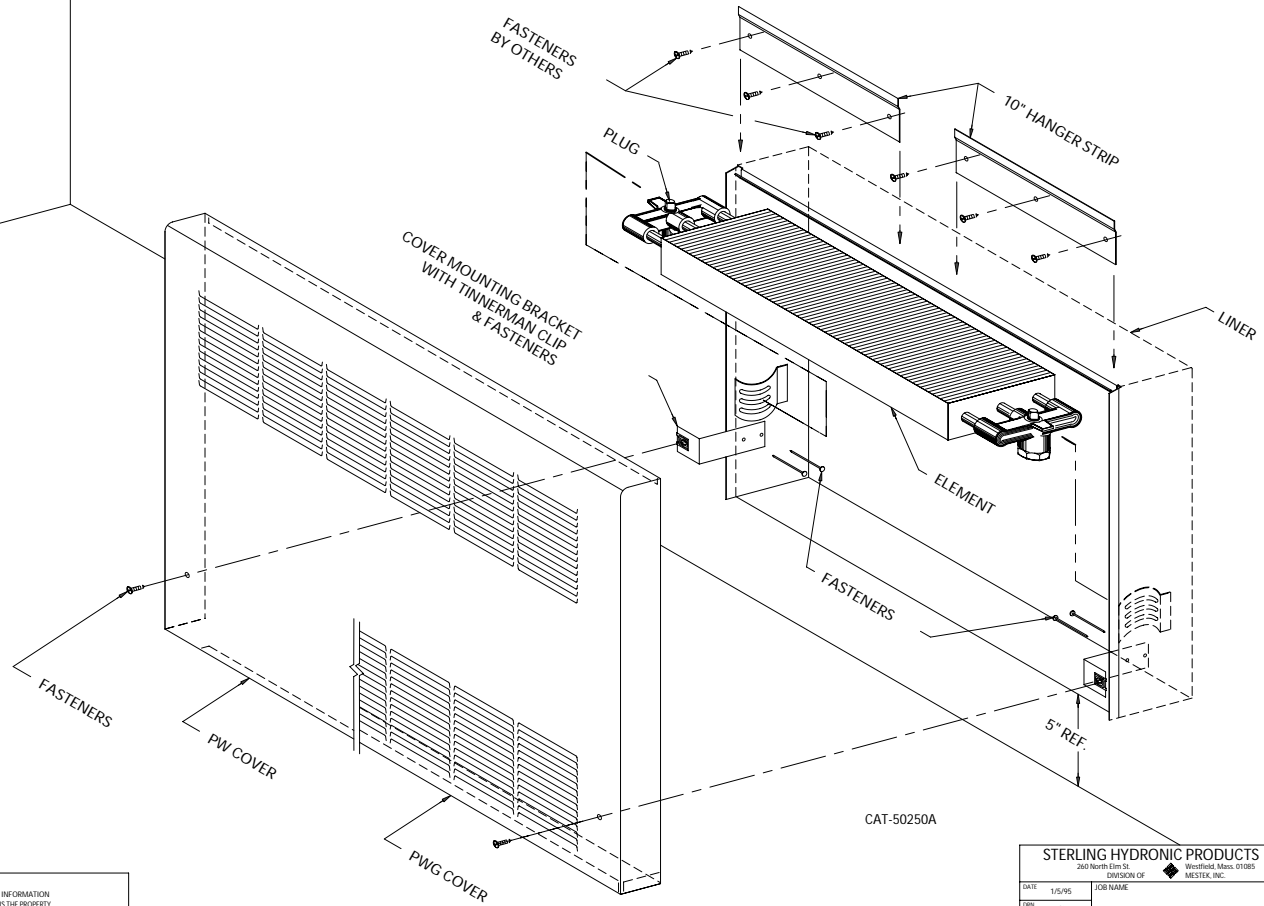


PW & PWG Convector Installation Instructions



CAT-50250A

THIS PRINT AND ALL INFORMATION APPEARING THEREON IS THE PROPERTY OF THE STERLING HYDRONIC DIVISION OF MESTEK INC. NEITHER THE PRINT NOR THE INFORMATION THEREON MAY BE REPRODUCED OR USED IN ANY MANNER WHATSOEVER OR DIVULGED TO ANY OTHER PERSON UNLESS SPECIFICALLY AUTHORIZED BY MESTEK INC.

STERLING HYDRONIC PRODUCTS
2400 North Elm St. Westfield, Mass. 01085
DIVISION OF MESTEK, INC.

| | | | |
|------------|--------|----------|--|
| DATE | 1/5/95 | JOB NAME | |
| DRAWN BY | SL | | |
| CHECKED BY | RJP | ELEMENT | |
| SCALE | 1=4 | | |

| | | | | | | | | | | | |
|------|---------|-----------------|---------|----|-------|-------|---|----------|-----------|------|---|
| A | 2615 | REVISED/UPDATED | 2/17/98 | SL | | TITLE | INSTALLATION INSTRUCTIONS B-M C TYPES PW & PWG | DWG. NO. | CAT-50250 | REV. | A |
| LET. | ECN NO. | REVISION | DATE | BY | APVD. | | | | | | |