

INSTALLATION INSTRUCTIONS

"WIPE EDGE" CLASSIC COMMERCIAL FINNED-TUBE RADIATION VB-ARPM/2PM PEDESTAL MOUNTED

Pedestal mounted enclosure is not recommended for use with steam systems.

1. Per the mechanical drawings, layout the pedestal brackets based on the enclosure lengths of the run. For enclosures 2'-0" to 5'-0" lengths, two (2) brackets will be required. These brackets should start and end 6" to 12" in from each end of the enclosure. For enclosures 5'-6" to 8'-0" lengths, three (3) brackets will be required. The third bracket will be centered between the two outer brackets.
2. Once the bracket locations along the run have been determined, secure them to the floor with the specified fasteners (by others). The rear vertical bracket leg should be a minimum of 2" from the wall. Depending on the flatness of the finished floor, it has to be determined which (if any) of the brackets need to be shimmed to allow for a level and straight enclosure installation.
3. Locate finned tube element where identified on mechanical drawings. Place element slide cradle supports onto element where brackets are located. The legs of the element cradles are tapered slightly outward so that a friction or compression fit will occur and hold them in place when pressing the cradles into place between the element fins. Place element and element slide cradles onto the ball bearings in the bracket and make sweat connections. For steel element, apply specified pipe dope, or sealing tape for threaded connections with the required threaded fittings. Check submittal drawings to confirm dimension out from wall to center of element and up from finished floor. Once the elements are connected into the heating system, a standard pressure leak test should be conducted as specified by the Mechanical Engineer. **For copper tube elements, flush the loop or series with system water after soldering to neutralize the remaining flux material and prevent corrosive action and resulting pinhole leaks.**
4. When the enclosure run is laid out wall to wall with the element supply tube running through the wall, it is typical to start and finish the run of enclosure with a "Wall Sleeve". This underlapping accessory provides for make-up in the run where the wall-to-wall dimension does not coincide with the standard enclosure lengths. The wiped edge enclosures can butt up to each other along the run. If specified, underlapping wall sleeve will be installed between each enclosure.
5. When enclosure is installed short of wall with supply and return lines coming out of the floor, end caps will be used to terminate the enclosure run at each end. All accessories are underlapping. They can telescope inside the enclosure up to 3-1/2 inches maximum. All accessories are universal. End caps and wall sleeves can be used at either the left hand or right hand end. 90° corners can be used for either inside or outside corner conditions.
6. If access is needed to air vents or shut off valves, it is recommended that a two (2) foot piece of enclosure is installed in the run where the device is located. This piece of enclosure will act as a valve compartment or access panel.

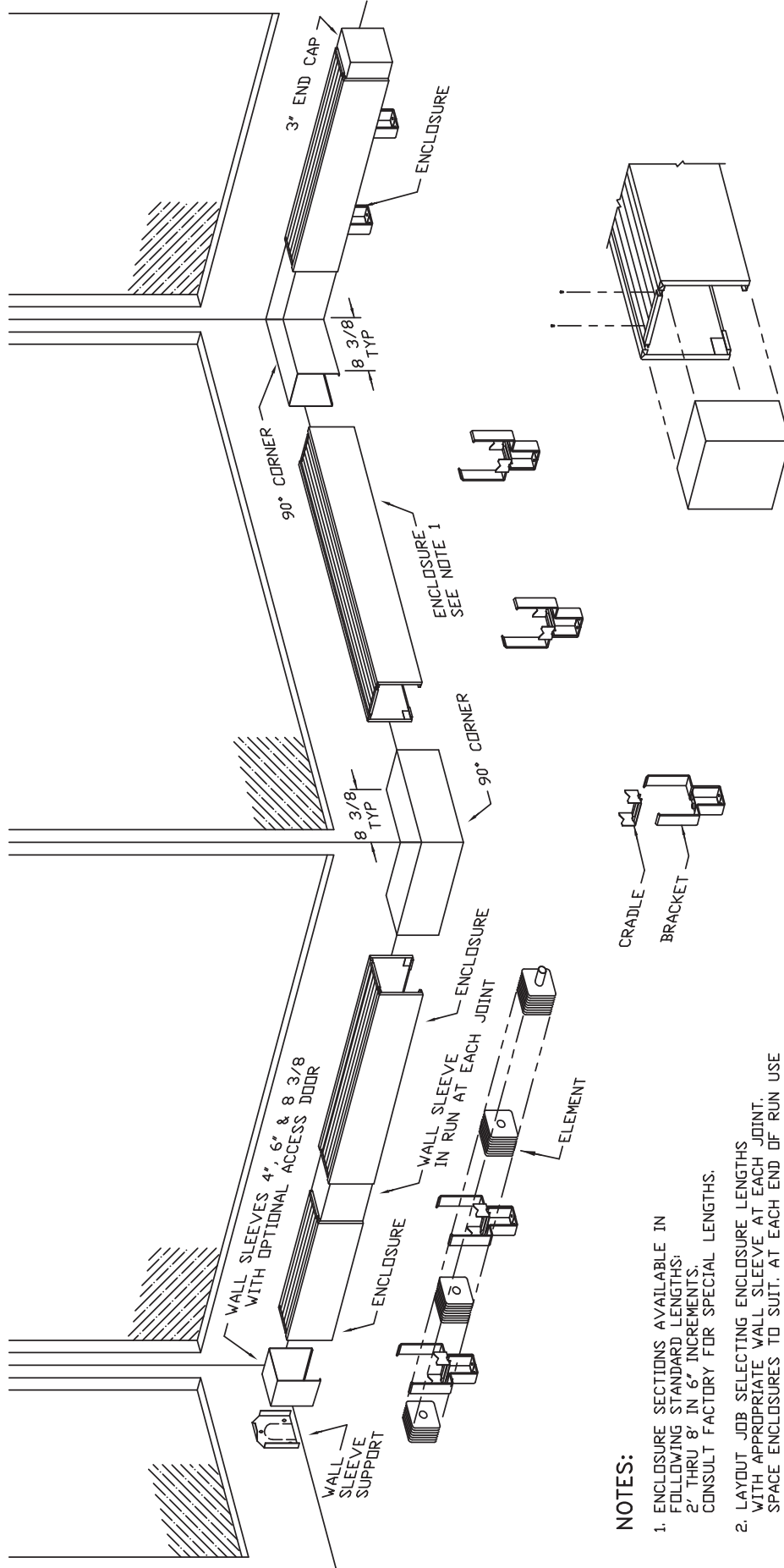
MAINTENANCE

Before each heating season, remove accessories and enclosure panel to inspect finned tube elements for accumulation of dust or other debris that may accumulate and block airflow between fins. Remove dust and debris from coil fins with a vacuum cleaner or compressed air. Inspect for leaks or areas of corrosion. It should not be required, but if necessary, place a drop of lubricant (machine oil) onto each ball bearing (where applicable) located in the water brackets or bracket mounted hangers. Replace cover and accessories.



260 NORTH ELM ST., WESTFIELD, MA 01085
TEL: (413) 568-9571 FAX: (413) 562-8437

GENERAL LAYOUT



NOTES:

- ENCLOSURE SECTIONS AVAILABLE IN FOLLOWING STANDARD LENGTHS: 2', THRU 8' IN 6" INCREMENTS. CONSULT FACTORY FOR SPECIAL LENGTHS.
- LAYOUT JOB SELECTING ENCLOSURE LENGTHS WITH APPROPRIATE WALL SLEEVE AT EACH JOINT. SPACE ENCLOSURES TO SUIT. AT EACH END OF RUN USE WALL SLEEVE OR 3" END TO SUIT JOB.
- LAYOUT PEDESTAL BRACKET ASSEMBLY SO IT IS 6" TO 12" FROM THE END OF THE ENCLOSURE TO AVOID INTERFERENCE WITH ENCLOSURE GUSSETS. LOCATE 1 PEDESTAL BRACKET ASSEMBLY AT CENTER OF ENCLOSURES LONGER THAN 5'.
- SCHEDULE ENCLOSURES TO OVERLAP ACCESSORIES 1'-3" EXCEPT ENDS 1'-2" WITH ACCESS DOOR OVERLAP MAX. 1". FOR MOST INSTALLATIONS, THE USE OF A TWO FOOT ENCLOSURE SECTION FOR A REMOVABLE ACCESS SECTION IS ACCEPTABLE.

NOTE: FASTEN ACCESSORY WITH #6 SHEET METAL SCREW THRU SOLID PART OF GRILLE. DRILL .37 (104) HOLES INTO ACCESSORY WHEN IN POSITION.

CAT-38928D