

CLASSIC

Submittal

JVK/VK-AR11
Classic Architectural
Copper/Aluminum and
Steel Elements

Specification

JVK Slip Jointed Enclosure

ENCLOSURE:

STYLE: Classic
OUTLET: Extruded Aluminum
Pencil Proof

LENGTHS: 2'0" thru 8'0" in 6" Increments

MAT'L: 16 Ga. CRS (Std)
 14 Ga. CRS (Opt'l)
 16 Ga. Stainless Steel (Opt'l)*
 14 Ga. Stainless Steel (Opt'l)*
 14 Ga. Aluminum (Opt'l)
 12 Ga. Aluminum (Opt'l)
*Available on "J" Style only

FINISH: Baked Powder (Std)
 Baked Metallic

ACCESSORIES:

JVK Overlapping Type
 VK Underlapping Type

All accessories return to the wall at the bottom and have pre-punched holes for fastening to the wall.

ELEMENT:

TYPE: Cu/Al (Mechanically Expanded)
LENGTHS: 2'0" thru 12'6" in 1" Increments for 1" & 1-1/4" Cu
2'0" thru 8'0" in 1" Increments for 3/4" Cu

One End Flared, (Std)

TYPE: IPS Steel (Mechanically Expanded)

LENGTHS: 2'0" Thru 12'0" in 1" Increments
 NPT Thread both Ends (Std)
 Beveled Ends for Field Weld

See Catalog for Working Pressures

VK Wiped Edge Enclosure

BACKPLATE:

TYPE: Partial B/P
LENGTHS: 8'0" Only
MAT'L: 20 Ga. Prepainted (Std)
 18 Ga. Galvannealed (Opt'l)

TYPE: Full Ht. B/P (Opt'l)
LENGTHS: 2'0" thru 8'0" in 6" Increments
MAT'L: 20 Ga. Galvannealed (Opt'l)
 20 Ga. Painted (Opt'l)
 18 Ga. Painted (Opt'l)

AIRSEAL:

1/8" x 3/8" Closed Cell (Opt'l)

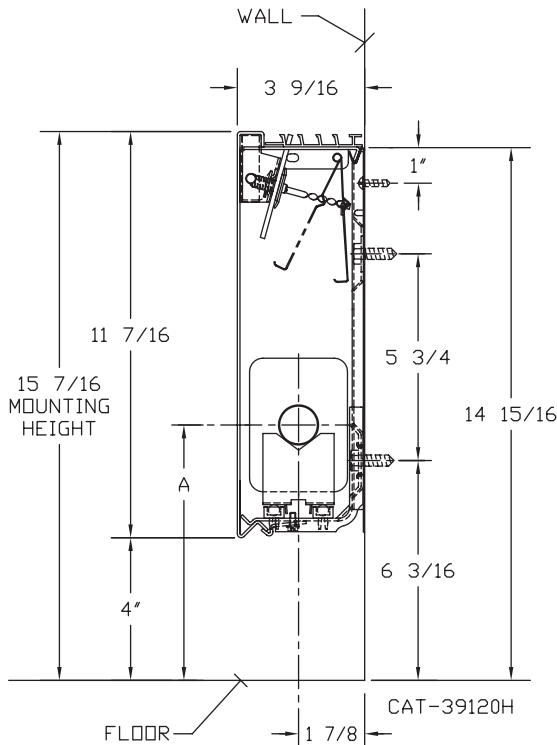
BRACKETS:

Water Brkt w/B.B.

DAMPER:

Dial Type (Opt'l)
 Tamper Resistant (Opt'l)

JVK/VK-AR11
(JVK Shown)



| ELEMENT TUBE SIZE | FIN SIZE HEIGHT x WIDTH | CRADLE NUMBER | A |
|-------------------|-------------------------|---------------|---------|
| 3/4 COPPER | 2 1/2 x 2 1/4 | 1 | 6 5/16 |
| 3/4 COPPER | 2 1/2 x 2 3/4 | 1 | |
| 3/4 COPPER | 3 3/4 x 2 3/4 | 2 | 7" |
| 1" COPPER | 2 1/2 x 2 3/4 | 1 | 6 1/2 |
| 1" COPPER | 3 3/4 x 2 3/4 | 2 | 7 3/16 |
| 1" COPPER | 5" x 2 3/4 | 3A | 7 1/2 |
| 1 1/4 COPPER | 3 3/4 x 2 3/4 | 2 | 7 5/16 |
| 1 1/4 COPPER | 5" x 2 3/4 | 3A | 7 11/16 |
| 1" STEEL | 3 3/4 x 2 3/4 | 2 | 7 5/16 |
| 1" STEEL | 5" x 2 3/4 | 3A | 7 11/16 |
| 1 1/4 STEEL | 3 3/4 x 2 3/4 | 2 | 7 1/2 |
| 1 1/4 STEEL | 5" x 2 3/4 | 3A | 7 15/16 |



COMMERCIAL HYDRONIC PRODUCTS
260 North Elm St., Westfield, MA 01085
(413) 564-5535 Fax: (413) 562-8437
www.sterlingheat.com



PROJECT: _____ DATE: _____
LOCATION: _____
ARCHITECT: _____
ENGINEER: _____
CONTRACTOR: _____
PO NUMBER: _____

STYLE JVK/VK-AR11

COPPER/ALUMINUM ELEMENT RATINGS

ALL RATINGS ARE BASED ON 3 FPS WATER VELOCITY, 65° EAT.

| TUBE SIZE | CATALOG DESIGNATION | FIN SIZE HEIGHT X WIDTH | FIN PER FT. | FIN THICKNESS | ENCL. HEIGHT | TIERS OF ELEMENT | MTG. HEIGHT | STEAM RATING 215°F, 65°F E. A. T. BTU/FT/HR | HOT WATER RATINGS BTU/FT/HR AWT | | | | | | |
|-----------|---------------------|----------------------------|-------------|---------------|----------------|------------------|----------------|--|------------------------------------|------------|------------|------------|------------|------------|------------|
| | | | | | | | | | 180° | 170° | 160° | 150° | 140° | 130° | 120° |
| | | | | | | | | | 0.69 | 0.61 | 0.53 | 0.45 | .40 | .33 | .26 |
| 3/4" | R01 | 2-1/2" x 2-1/4" | 50 | .011 | 11-7/16 | 1 | 15-7/16 | 780 | 540 | 480 | 410 | 350 | 310 | 260 | 200 |
| 3/4" | R02 | 2-1/2" x 2-3/4" | 60 | .010 | 11-7/16 | 1 | 15-7/16 | 1030 | 710 | 630 | 550 | 460 | 410 | 340 | 270 |
| 3/4" | R04 | 3-3/4" x 2-3/4" | 50 | .014 | 11-7/16 | 1 | 15-7/16 | 1060 | 730 | 650 | 560 | 480 | 420 | 350 | 280 |
| 1" | R03 | 2-1/2" x 2-3/4" | 55 | .011 | 11-7/16 | 1 | 15-7/16 | 1000 | 690 | 610 | 530 | 450 | 400 | 330 | 260 |
| 1" | R05 | 3-3/4" x 2-3/4" | 50 | .011 | 11-7/16 | 1 | 15-7/16 | 1010 | 700 | 620 | 540 | 450 | 400 | 330 | 260 |
| 1" | R07 | 5" x 2-3/4" | 50 | .020 | 11-7/16 | 1 | 15-7/16 | 1170 | 810 | 710 | 620 | 530 | 470 | 390 | 300 |
| 1-1/4" | R08 | 3-3/4" x 2-3/4" | 50 | .020 | 11-7/16 | 1 | 15-7/16 | 1140 | 790 | 700 | 600 | 510 | 460 | 80 | 300 |
| 1-1/4" | R10 | 5" x 2-3/4" | 50 | .020 | 11-7/16 | 1 | 15-7/16 | 1140 | 790 | 700 | 600 | 510 | 460 | 380 | 300 |

► **Bold, italicized units are**  **rated** ◀

STEEL ELEMENT RATINGS*

ALL RATINGS ARE BASED ON 3 FPS WATER VELOCITY, 65° EAT.

| I.P.S. SIZE | CATALOG DESIGNATION | FIN SIZE HEIGHT X WIDTH | FIN PER FT. | FIN THICKNESS | ENCL. HEIGHT | TIERS OF ELEMENT | MTG. HEIGHT | STEAM RATING 215°F, 65°F E. A. T. BTU/FT/HR | HOT WATER RATINGS BTU/FT/HR AWT | | | | | | |
|-------------|---------------------|----------------------------|-------------|---------------|--------------|------------------|-------------|--|------------------------------------|------|------|------|------|------|------|
| | | | | | | | | | 180° | 170° | 160° | 150° | 140° | 130° | 120° |
| | | | | | | | | | 0.69 | 0.61 | 0.53 | 0.45 | .40 | .33 | .26 |
| 1" | R11 | 3-3/4" x 2-3/4" | 40 | .024 | 11-7/16 | 1 | 15-7/16 | 760 | 520 | 460 | 400 | 340 | 300 | 250 | 200 |
| 1" | R15 | 5" x 2-3/4" | 50 | .024 | 11-7/16 | 1 | 15-7/16 | 930 | 640 | 570 | 490 | 420 | 370 | 310 | 240 |
| 1-1/4" | R16 | 5" x 2-3/4" | 50 | .024 | 11-7/16 | 1 | 15-7/16 | 900 | 620 | 550 | 480 | 410 | 360 | 300 | 230 |

* Male NPT threads furnished on steel elements. Please use domestic fittings for proper installation.

Note: Not recommended for steam applications. Consult factory.