

CLASSIC

Submittal

JVB/VB-AR14, 20 & 24
Classic Architectural
Copper/Aluminum and
Steel Elements

Specification

JVB Slip Jointed Enclosure

ENCLOSURE:

- STYLE: Classic
 OUTLET: Extruded Aluminum Pencil Proof
- LENGTHS: 2'0" thru 8'0" in 6" Increments
 MAT'L: 16 Ga. CRS (Std)
 14 Ga. CRS (Opt'l)
 16 Ga. Stainless Steel (Opt'l)*
 14 Ga. Stainless Steel (Opt'l)*
 14 Ga. Aluminum (Opt'l)
 12 Ga. Aluminum (Opt'l)
 *Available on "J" Style only
- HEIGHT: 14 7/16"
 20 7/16"
 24 7/16"
- FINISH: Baked Powder (Std)
 Baked Metallic

ACCESSORIES:

- JVB Overlapping Type
 VB Underlapping Type
- All accessories return to the wall at the bottom and have pre-punched holes for fastening to the wall.

ELEMENT:

- TYPE: Cu/Al (Mechanically Expanded)
- LENGTHS: 2'0" thru 12'6" in 1" Increments for 1" & 1-1/4" Cu.
 2'0" thru 8'0" in 1" Increments for 3/4" Cu.
- TYPE: One End Flared, (Std)
- TYPE: IPS Steel (Mechanically Expanded)
- LENGTHS: 2'0" Thru 12'0" in 1" Increments
 NPT Thread both Ends (Std)
 Beveled Ends for Field Weld
- See Catalog for Working Pressures

VB Wiped Edge Enclosure

BACKPLATE:

- TYPE: Partial B/P
 LENGTHS: 8'0" Only
 MAT'L: 20 Ga. Prepainted (Std)
 18 Ga. Galvannealed (Opt'l)
- TYPE: Full Ht. B/P (Opt'l)
 LENGTHS: 2'0" thru 8'0" in 6" Increments
 MAT'L: 20 Ga. Galvannealed (Opt'l)
 20 Ga. Painted (Opt'l)
 18 Ga. Painted (Opt'l)

AIRSEAL:

- 1/8" x 3/8" Closed Cell (Opt'l)

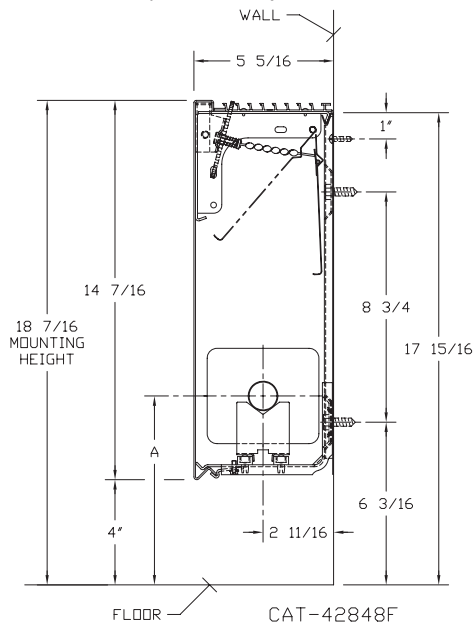
BRACKETS:

- Water Brkt w/B.B.
 Steam Brkt w/Brkt Mtd B.B. Hgr
 Wall Brkt w/ B.B. Hgr (For 3rd Tier)

DAMPER:

- Dial Type (Opt'l)
 Tamper Resistant (Opt'l)
 Slide Damper (Opt'l)

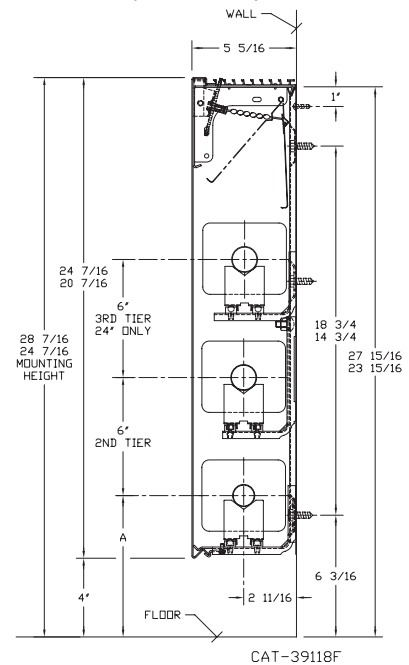
JVB/VB-AR14
(JVB Shown)



Consult factory for 2-tier application

| ELEMENT TUBE SIZE | FIN SIZE HEIGHT x WIDTH | CRADLE NUMBER | A |
|-------------------|-------------------------|---------------|---------|
| 3/4 COPPER | 3 5/8 x 4 1/4 | 2 | 7" |
| 3/4 COPPER | 4 1/4 x 4 1/4 | 3A | 7 3/8" |
| 1" COPPER | 3 5/8 x 4 1/4 | 2 | 7 3/16" |
| 1" COPPER | 4 1/4 x 4 1/4 | 2 | 7 3/16" |
| 1 1/4 COPPER | 3 5/8 x 4 1/4 | 2 | 7 5/16" |
| 1 1/4 COPPER | 4 1/4 x 4 1/4 | 2 | 7 5/16" |
| 1" STEEL | 4 1/4 x 4 1/4 | 2 | 7 5/16" |
| 1 1/4 STEEL | 4 1/4 x 4 1/4 | 2 | 7 1/2" |
| 2" STEEL | 4 1/4 x 4 1/4 | 1 | 7 1/4" |

JVB/VB-AR20 & 24
(JVB Shown)



COMMERCIAL HYDRONIC PRODUCTS
 260 North Elm St., Westfield, MA 01085
 (413) 564-5535 Fax: (413) 562-8437
 www.sterlingheat.com



PROJECT: _____ DATE: _____
 LOCATION: _____
 ARCHITECT: _____
 ENGINEER: _____
 CONTRACTOR: _____
 PO NUMBER: _____

STYLE JVB/VB-AR14, 20 & 24

COPPER/ALUMINUM ELEMENT RATINGS

ALL RATINGS ARE BASED ON 3 FPS WATER VELOCITY, 65° EAT.

| TUBE SIZE | CATALOG DESIGNATION | FIN SIZE HEIGHT X WIDTH | FIN PER FT. | FIN THICKNESS | ENCL. HEIGHT | TIERS OF ELEMENT | MTG. HEIGHT | STEAM RATING 215°F, 65°F E.A.T. BTU/FT/HR | HOT WATER RATINGS BTU/FT/HR AWT | | | | | | |
|-----------|---------------------|-------------------------|-------------|---------------|----------------|------------------|----------------|--|------------------------------------|-------------|-------------|-------------|-------------|------------|------------|
| | | | | | | | | | 180° | 170° | 160° | 150° | 140° | 130° | 120° |
| | | | | | | | | | 0.69 | 0.61 | 0.53 | 0.45 | .40 | .33 | .26 |
| 3/4" | C3/4-433 | 3-5/8" x 4-1/4" | 32 | .020 | 14-7/16 | 1 | 18-7/16 | 1360 | 940 | 830 | 720 | 610 | 540 | 450 | 350 |
| | | | | | 20-7/16 | 1 | 24-7/16 | 1400 | 970 | 850 | 740 | 630 | 560 | 460 | 360 |
| | | | | | 20-7/16 | 2-6 CL | 24-7/16 | 2220 | 1530 | 1350 | 1180 | 1000 | 890 | 730 | 580 |
| | | | | | 24-7/16 | 1 | 28-7/16 | 1425 | 980 | 870 | 760 | 640 | 570 | 470 | 370 |
| | | | | | 24-7/16 | 2-6 CL | 28-7/16 | 2270 | 1570 | 1380 | 1200 | 1020 | 910 | 750 | 590 |
| | | | | | 24-7/16 | 3-6 CL | 28-7/16 | 2610 | 1800 | 1590 | 1380 | 1170 | 1040 | 860 | 680 |
| 3/4" | C3/4-434 | 3-5/8" x 4-1/4" | 40 | .020 | 14-7/16 | 1 | 18-7/16 | 1620 | 1120 | 990 | 860 | 730 | 650 | 530 | 420 |
| | | | | | 20-7/16 | 1 | 24-7/16 | 1710 | 1180 | 1040 | 910 | 770 | 680 | 560 | 440 |
| | | | | | 20-7/16 | 2-6 CL | 24-7/16 | 2390 | 1650 | 1460 | 1270 | 1080 | 960 | 790 | 620 |
| | | | | | 24-7/16 | 1 | 28-7/16 | 1800 | 1240 | 1100 | 950 | 810 | 720 | 590 | 470 |
| | | | | | 24-7/16 | 2-6 CL | 28-7/16 | 2490 | 1720 | 1520 | 1320 | 1120 | 1000 | 820 | 650 |
| | | | | | 24-7/16 | 3-6 CL | 28-7/16 | 2840 | 1960 | 1730 | 1510 | 1280 | 1140 | 940 | 740 |
| 3/4" | C3/4-435 | 3-5/8" x 4-1/4" | 50 | .020 | 14-7/16 | 1 | 18-7/16 | 1780 | 1230 | 1090 | 940 | 800 | 710 | 590 | 460 |
| | | | | | 20-7/16 | 1 | 24-7/16 | 1940 | 1340 | 1180 | 1030 | 870 | 780 | 640 | 500 |
| | | | | | 20-7/16 | 2-6 CL | 24-7/16 | 2400 | 1660 | 1460 | 1270 | 1080 | 960 | 790 | 620 |
| | | | | | 24-7/16 | 1 | 28-7/16 | 2080 | 1440 | 1270 | 1100 | 940 | 830 | 690 | 540 |
| | | | | | 24-7/16 | 2-6 CL | 28-7/16 | 2530 | 1750 | 1540 | 1340 | 1140 | 1010 | 830 | 660 |
| | | | | | 24-7/16 | 3-6 CL | 28-7/16 | 2860 | 1970 | 1740 | 1520 | 1290 | 1140 | 940 | 740 |
| 1" | C433 | 3-5/8" x 4-1/4" | 32 | .020 | 14-7/16 | 1 | 18-7/16 | 1410 | 970 | 860 | 750 | 630 | 560 | 470 | 370 |
| | | | | | 20-7/16 | 1 | 24-7/16 | 1450 | 1000 | 880 | 770 | 650 | 580 | 480 | 380 |
| | | | | | 20-7/16 | 2-6 CL | 24-7/16 | 2320 | 1600 | 1420 | 1230 | 1040 | 930 | 770 | 600 |
| | | | | | 24-7/16 | 1 | 28-7/16 | 1480 | 1020 | 900 | 780 | 670 | 590 | 490 | 380 |
| | | | | | 24-7/16 | 2-6 CL | 28-7/16 | 2410 | 1660 | 1470 | 1280 | 1080 | 960 | 800 | 630 |
| | | | | | 24-7/16 | 3-6 CL | 28-7/16 | 2770 | 1910 | 1690 | 1470 | 1250 | 1110 | 910 | 720 |
| 1" | C434 | 3-5/8" x 4-1/4" | 40 | .020 | 14-7/16 | 1 | 18-7/16 | 1690 | 1170 | 1030 | 900 | 760 | 680 | 560 | 440 |
| | | | | | 20-7/16 | 1 | 24-7/16 | 1800 | 1240 | 1100 | 950 | 810 | 720 | 590 | 470 |
| | | | | | 20-7/16 | 2-6 CL | 24-7/16 | 2510 | 1730 | 1530 | 1330 | 1130 | 1000 | 830 | 650 |
| | | | | | 24-7/16 | 1 | 28-7/16 | 1890 | 1300 | 1150 | 1000 | 850 | 760 | 620 | 490 |
| | | | | | 24-7/16 | 2-6 CL | 28-7/16 | 2660 | 1840 | 1620 | 1410 | 1200 | 1060 | 880 | 690 |
| | | | | | 24-7/16 | 3-6 CL | 28-7/16 | 3030 | 2090 | 1850 | 1610 | 1360 | 1210 | 1000 | 790 |
| 1" | C435 | 3-5/8" x 4-1/4" | 50 | .020 | 14-7/16 | 1 | 18-7/16 | 1850 | 1280 | 1130 | 980 | 830 | 740 | 610 | 480 |
| | | | | | 20-7/16 | 1 | 24-7/16 | 2030 | 1400 | 1240 | 1080 | 910 | 810 | 670 | 530 |
| | | | | | 20-7/16 | 2-6 CL | 24-7/16 | 2510 | 1730 | 1530 | 1330 | 1130 | 1000 | 830 | 650 |
| | | | | | 24-7/16 | 1 | 28-7/16 | 2170 | 1500 | 1320 | 1150 | 980 | 870 | 720 | 560 |
| | | | | | 24-7/16 | 2-6 CL | 28-7/16 | 2660 | 1840 | 1620 | 1410 | 1200 | 1060 | 880 | 690 |
| | | | | | 24-7/16 | 3-6 CL | 28-7/16 | 3010 | 2080 | 1840 | 1600 | 1350 | 1200 | 990 | 780 |
| 1-1/4" | C1433 | 3-5/8" x 4-1/4" | 32 | .020 | 14-7/16 | 1 | 18-7/16 | 1380 | 950 | 840 | 730 | 620 | 550 | 460 | 360 |
| | | | | | 20-7/16 | 1 | 24-7/16 | 1420 | 980 | 870 | 750 | 640 | 570 | 470 | 370 |
| | | | | | 20-7/16 | 2-6 CL | 24-7/16 | 2280 | 1570 | 1390 | 1210 | 1030 | 910 | 750 | 590 |
| | | | | | 24-7/16 | 1 | 28-7/16 | 1450 | 1000 | 880 | 770 | 650 | 580 | 480 | 380 |
| | | | | | 24-7/16 | 2-6 CL | 28-7/16 | 2370 | 1640 | 1450 | 1260 | 1070 | 950 | 780 | 620 |
| | | | | | 24-7/16 | 3-6 CL | 28-7/16 | 2730 | 1880 | 1670 | 1450 | 1230 | 1090 | 900 | 710 |
| 1-1/4" | C1434 | 3-5/8" x 4-1/4" | 40 | .020 | 14-7/16 | 1 | 18-7/16 | 1660 | 1150 | 1010 | 880 | 750 | 660 | 550 | 430 |
| | | | | | 20-7/16 | 1 | 24-7/16 | 1760 | 1210 | 1070 | 930 | 790 | 700 | 580 | 460 |
| | | | | | 20-7/16 | 2-6 CL | 24-7/16 | 2460 | 1700 | 1500 | 1300 | 1110 | 980 | 810 | 640 |
| | | | | | 24-7/16 | 1 | 28-7/16 | 1850 | 1280 | 1130 | 980 | 830 | 740 | 610 | 480 |
| | | | | | 24-7/16 | 2-6 CL | 28-7/16 | 2600 | 1790 | 1590 | 1380 | 1170 | 1040 | 860 | 680 |
| | | | | | 24-7/16 | 3-6 CL | 28-7/16 | 2960 | 2040 | 1810 | 1570 | 1330 | 1180 | 980 | 770 |
| 1-1/4" | C1435 | 3-5/8" x 4-1/4" | 50 | .020 | 14-7/16 | 1 | 18-7/16 | 1760 | 1210 | 1070 | 930 | 790 | 700 | 580 | 460 |
| | | | | | 20-7/16 | 1 | 24-7/16 | 1920 | 1320 | 1170 | 1020 | 860 | 770 | 630 | 500 |
| | | | | | 20-7/16 | 2-6 CL | 24-7/16 | 2370 | 1640 | 1450 | 1260 | 1070 | 950 | 780 | 620 |
| | | | | | 24-7/16 | 1 | 28-7/16 | 2050 | 1410 | 1250 | 1090 | 920 | 820 | 680 | 530 |
| | | | | | 24-7/16 | 2-6 CL | 28-7/16 | 2500 | 1720 | 1530 | 1330 | 1130 | 1000 | 830 | 650 |
| | | | | | 24-7/16 | 3-6 CL | 28-7/16 | 2820 | 1950 | 1720 | 1490 | 1270 | 1130 | 930 | 730 |

► **Bold, italicized units are**  **rated** ◀

STYLE JVB/VB-AR14, 20 & 24

COPPER/ALUMINUM ELEMENT RATINGS

ALL RATINGS ARE BASED ON 3 FPS WATER VELOCITY, 65° EAT.

| TUBE SIZE | CATALOG DESIGNATION | FIN SIZE HEIGHT X WIDTH | FIN PER FT. | FIN THICKNESS | ENCL. HEIGHT | TIERS OF ELEMENT | MTG. HEIGHT | STEAM RATING 215°F, 65°F E. A. T. BTU/FT/HR | HOT WATER RATINGS BTU/FT/HR AWT | | | | | | |
|-----------|---------------------|-------------------------|-------------|---------------|----------------|------------------|----------------|--|------------------------------------|-------------|-------------|-------------|-------------|------------|------------|
| | | | | | | | | | 180° | 170° | 160° | 150° | 140° | 130° | 120° |
| | | | | | | | | | 0.69 | 0.61 | 0.53 | 0.45 | .40 | .33 | .26 |
| 3/4" | C3/4-43 | 4-1/4" SQ. | 32 | .020 | 14-7/16 | 1 | 18-7/16 | 1470 | 1010 | 900 | 780 | 660 | 590 | 490 | 380 |
| | | | | | 20-7/16 | 1 | 24-7/16 | 1540 | 1060 | 940 | 820 | 690 | 620 | 510 | 400 |
| | | | | | 20-7/16 | 2-6 CL | 24-7/16 | 2310 | 1590 | 1410 | 1220 | 1040 | 920 | 760 | 600 |
| | | | | | 24-7/16 | 1 | 28-7/16 | 1570 | 1080 | 960 | 830 | 710 | 630 | 520 | 410 |
| | | | | | 24-7/16 | 2-6 CL | 28-7/16 | 2410 | 1660 | 1470 | 1280 | 1080 | 960 | 800 | 630 |
| | | | | | 24-7/16 | 3-6 CL | 28-7/16 | 2770 | 1910 | 1690 | 1470 | 1250 | 1110 | 910 | 720 |
| 3/4" | C3/4-44 | 4-1/4" SQ. | 40 | .020 | 14-7/16 | 1 | 18-7/16 | 1840 | 1270 | 1120 | 980 | 830 | 740 | 610 | 480 |
| | | | | | 20-7/16 | 1 | 24-7/16 | 1950 | 1350 | 1190 | 1030 | 880 | 780 | 640 | 510 |
| | | | | | 20-7/16 | 2-6 CL | 24-7/16 | 2360 | 1630 | 1440 | 1250 | 1060 | 940 | 780 | 610 |
| | | | | | 24-7/16 | 1 | 28-7/16 | 2070 | 1430 | 1260 | 1100 | 930 | 830 | 680 | 540 |
| | | | | | 24-7/16 | 2-6 CL | 28-7/16 | 2550 | 1760 | 1560 | 1350 | 1150 | 1020 | 840 | 660 |
| | | | | | 24-7/16 | 3-6 CL | 28-7/16 | 2910 | 2010 | 1780 | 1540 | 1310 | 1160 | 960 | 760 |
| 3/4" | C3/4-45 | 4-1/4" SQ. | 50 | .020 | 14-7/16 | 1 | 18-7/16 | 1870 | 1290 | 1140 | 990 | 840 | 750 | 620 | 490 |
| | | | | | 20-7/16 | 1 | 24-7/16 | 2050 | 1410 | 1250 | 1090 | 920 | 820 | 680 | 530 |
| | | | | | 20-7/16 | 2-6 CL | 24-7/16 | 2480 | 1710 | 1510 | 1310 | 1120 | 990 | 820 | 640 |
| | | | | | 24-7/16 | 1 | 28-7/16 | 2200 | 1520 | 1340 | 1170 | 990 | 880 | 730 | 570 |
| | | | | | 24-7/16 | 2-6 CL | 28-7/16 | 2670 | 1840 | 1630 | 1420 | 1200 | 1070 | 880 | 690 |
| | | | | | 24-7/16 | 3-6 CL | 28-7/16 | 3020 | 2080 | 1840 | 1600 | 1360 | 1210 | 1000 | 790 |
| 1" | C43 | 4-1/4" SQ. | 32 | .020 | 14-7/16 | 1 | 18-7/16 | 1470 | 1010 | 900 | 780 | 660 | 590 | 490 | 380 |
| | | | | | 20-7/16 | 1 | 24-7/16 | 1540 | 1060 | 940 | 820 | 690 | 620 | 510 | 400 |
| | | | | | 20-7/16 | 2-6 CL | 24-7/16 | 2340 | 1610 | 1430 | 1240 | 1050 | 940 | 770 | 610 |
| | | | | | 24-7/16 | 1 | 28-7/16 | 1580 | 1090 | 960 | 840 | 710 | 630 | 520 | 410 |
| | | | | | 24-7/16 | 2-6 CL | 28-7/16 | 2440 | 1680 | 1490 | 1290 | 1100 | 980 | 810 | 630 |
| | | | | | 24-7/16 | 3-6 CL | 28-7/16 | 2810 | 1940 | 1710 | 1490 | 1260 | 1120 | 930 | 730 |
| 1" | C44 | 4-1/4" SQ. | 40 | .020 | 14-7/16 | 1 | 18-7/16 | 1720 | 1190 | 1050 | 910 | 770 | 690 | 570 | 450 |
| | | | | | 20-7/16 | 1 | 24-7/16 | 1810 | 1250 | 1100 | 960 | 810 | 720 | 600 | 470 |
| | | | | | 20-7/16 | 2-6 CL | 24-7/16 | 2510 | 1730 | 1530 | 1330 | 1130 | 1000 | 830 | 650 |
| | | | | | 24-7/16 | 1 | 28-7/16 | 1920 | 1320 | 1170 | 1020 | 860 | 770 | 630 | 500 |
| | | | | | 24-7/16 | 2-6 CL | 28-7/16 | 2600 | 1790 | 1590 | 1380 | 1170 | 1040 | 860 | 680 |
| | | | | | 24-7/16 | 3-6 CL | 28-7/16 | 2960 | 2040 | 1810 | 1570 | 1330 | 1180 | 980 | 770 |
| 1" | C45 | 4-1/4" SQ. | 50 | .020 | 14-7/16 | 1 | 18-7/16 | 1900 | 1310 | 1160 | 1010 | 860 | 760 | 630 | 490 |
| | | | | | 20-7/16 | 1 | 24-7/16 | 2090 | 1440 | 1270 | 1110 | 940 | 840 | 690 | 540 |
| | | | | | 20-7/16 | 2-6 CL | 24-7/16 | 2510 | 1730 | 1530 | 1330 | 1130 | 1000 | 830 | 650 |
| | | | | | 24-7/16 | 1 | 28-7/16 | 2250 | 1550 | 1370 | 1190 | 1010 | 900 | 740 | 590 |
| | | | | | 24-7/16 | 2-6 CL | 28-7/16 | 2710 | 1870 | 1650 | 1440 | 1220 | 1080 | 890 | 700 |
| | | | | | 24-7/16 | 3-6 CL | 28-7/16 | 3060 | 2110 | 1870 | 1620 | 1380 | 1220 | 1010 | 800 |
| 1-1/4" | C143 | 4-1/4" SQ. | 32 | .020 | 14-7/16 | 1 | 18-7/16 | 1440 | 990 | 880 | 760 | 650 | 580 | 480 | 370 |
| | | | | | 20-7/16 | 1 | 24-7/16 | 1510 | 1040 | 920 | 800 | 680 | 600 | 500 | 390 |
| | | | | | 20-7/16 | 2-6 CL | 24-7/16 | 2300 | 1590 | 1400 | 1220 | 1040 | 920 | 760 | 600 |
| | | | | | 24-7/16 | 1 | 28-7/16 | 1550 | 1070 | 950 | 820 | 700 | 620 | 510 | 400 |
| | | | | | 24-7/16 | 2-6 CL | 28-7/16 | 2390 | 1650 | 1460 | 1270 | 1080 | 960 | 790 | 620 |
| | | | | | 24-7/16 | 3-6 CL | 28-7/16 | 2750 | 1900 | 1680 | 1460 | 1240 | 1100 | 910 | 720 |
| 1-1/4" | C144 | 4-1/4" SQ. | 40 | .020 | 14-7/16 | 1 | 18-7/16 | 1690 | 1170 | 1030 | 900 | 760 | 680 | 560 | 440 |
| | | | | | 20-7/16 | 1 | 24-7/16 | 1780 | 1230 | 1090 | 940 | 800 | 710 | 590 | 460 |
| | | | | | 20-7/16 | 2-6 CL | 24-7/16 | 2460 | 1700 | 1500 | 1300 | 1110 | 980 | 810 | 640 |
| | | | | | 24-7/16 | 1 | 28-7/16 | 1890 | 1300 | 1150 | 1000 | 850 | 760 | 620 | 490 |
| | | | | | 24-7/16 | 2-6 CL | 28-7/16 | 2550 | 1760 | 1560 | 1350 | 1150 | 1020 | 840 | 660 |
| | | | | | 24-7/16 | 3-6 CL | 28-7/16 | 2910 | 2010 | 1780 | 1540 | 1310 | 1160 | 960 | 760 |
| 1-1/4" | C145 | 4-1/4" SQ. | 50 | .020 | 14-7/16 | 1 | 18-7/16 | 1870 | 1290 | 1140 | 990 | 840 | 750 | 620 | 490 |
| | | | | | 20-7/16 | 1 | 24-7/16 | 2050 | 1410 | 1250 | 1090 | 920 | 820 | 680 | 530 |
| | | | | | 20-7/16 | 2-6 CL | 24-7/16 | 2460 | 1700 | 1500 | 1300 | 1110 | 980 | 810 | 640 |
| | | | | | 24-7/16 | 1 | 28-7/16 | 2210 | 1520 | 1350 | 1170 | 990 | 880 | 730 | 570 |
| | | | | | 24-7/16 | 2-6 CL | 28-7/16 | 2650 | 1830 | 1620 | 1400 | 1190 | 1060 | 870 | 690 |
| | | | | | 24-7/16 | 3-6 CL | 28-7/16 | 2990 | 2060 | 1820 | 1580 | 1350 | 1200 | 990 | 780 |

► **Bold, italicized units are ASME CERTIFIED rated** ◀

STYLE JVB/VB-AR14, 20 & 24

STEEL ELEMENT RATINGS*

ALL RATINGS ARE BASED ON 3 FPS WATER VELOCITY, 65° EAT.

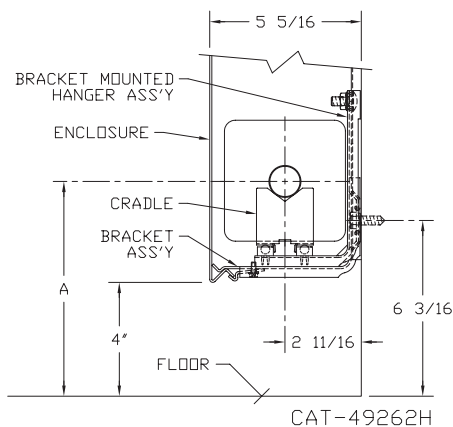
| TUBE SIZE | CATALOG DESIGNATION | FIN SIZE HEIGHT X WIDTH | FIN PER FT. | FIN THICKNESS | ENCL. HEIGHT | TIERS OF ELEMENT | MTG. HEIGHT | STEAM RATING 215°F, 65°F E.A.T. BTU/FT/HR | HOT WATER RATINGS BTU/FT/HR AWT | | | | | | | |
|-----------|---------------------|-------------------------|-------------|---------------|--------------|------------------|-------------|---|---------------------------------|------|------|------|------|------|------|--|
| | | | | | | | | | 180° | 170° | 160° | 150° | 140° | 130° | 120° | |
| | | | | | | | | | 0.69 | 0.61 | 0.53 | 0.45 | .40 | .33 | .26 | |
| 1" | S43 | 4-1/4" SQ. | 32 | .032 | 14-7/16 | 1 | 18-7/16 | 1210 | 830 | 740 | 640 | 540 | 480 | 400 | 310 | |
| | | | | | 20-7/16 | 1 | 24-7/16 | 1270 | 880 | 770 | 670 | 570 | 510 | 420 | 330 | |
| | | | | | 20-7/16 | 2-6 CL | 24-7/16 | 2080 | 1440 | 1270 | 1100 | 940 | 830 | 690 | 540 | |
| | | | | | 24-7/16 | 1 | 28-7/16 | 1310 | 900 | 800 | 690 | 590 | 520 | 430 | 340 | |
| | | | | | 24-7/16 | 2-6 CL | 28-7/16 | 2120 | 1460 | 1290 | 1120 | 950 | 850 | 700 | 550 | |
| 1" | S44 | 4-1/4" SQ. | 40 | .032 | 14-7/16 | 1 | 18-7/16 | 1440 | 990 | 880 | 760 | 650 | 580 | 480 | 370 | |
| | | | | | 20-7/16 | 1 | 24-7/16 | 1530 | 1060 | 930 | 810 | 690 | 610 | 500 | 400 | |
| | | | | | 20-7/16 | 2-6 CL | 24-7/16 | 2330 | 1610 | 1420 | 1230 | 1050 | 930 | 770 | 610 | |
| | | | | | 24-7/16 | 1 | 28-7/16 | 1600 | 1100 | 980 | 850 | 720 | 640 | 530 | 420 | |
| | | | | | 24-7/16 | 2-6 CL | 28-7/16 | 2395 | 1650 | 1460 | 1270 | 1080 | 960 | 790 | 620 | |
| 1" | S45 | 4-1/4" SQ. | 50 | .032 | 14-7/16 | 1 | 18-7/16 | 1490 | 1030 | 910 | 790 | 670 | 600 | 490 | 390 | |
| | | | | | 20-7/16 | 1 | 24-7/16 | 1565 | 1080 | 950 | 830 | 700 | 630 | 520 | 410 | |
| | | | | | 20-7/16 | 2-6 CL | 24-7/16 | 2285 | 1580 | 1390 | 1210 | 1030 | 910 | 750 | 590 | |
| | | | | | 24-7/16 | 1 | 28-7/16 | 1620 | 1120 | 990 | 860 | 730 | 650 | 530 | 420 | |
| | | | | | 24-7/16 | 2-6 CL | 28-7/16 | 2320 | 1600 | 1420 | 1230 | 1040 | 930 | 770 | 600 | |
| 1-1/4" | S143 | 4-1/4" SQ. | 32 | .032 | 14-7/16 | 1 | 18-7/16 | 1200 | 830 | 730 | 640 | 540 | 480 | 400 | 310 | |
| | | | | | 20-7/16 | 1 | 24-7/16 | 1260 | 870 | 770 | 670 | 570 | 500 | 420 | 330 | |
| | | | | | 20-7/16 | 2-6 CL | 24-7/16 | 2060 | 1420 | 1260 | 1090 | 930 | 820 | 680 | 540 | |
| | | | | | 24-7/16 | 1 | 28-7/16 | 1300 | 900 | 790 | 690 | 590 | 520 | 430 | 340 | |
| | | | | | 24-7/16 | 2-6 CL | 28-7/16 | 2100 | 1450 | 1280 | 1110 | 950 | 840 | 690 | 550 | |
| 1-1/4" | S144 | 4-1/4" SQ. | 40 | .032 | 14-7/16 | 1 | 18-7/16 | 1430 | 990 | 870 | 760 | 640 | 570 | 470 | 370 | |
| | | | | | 20-7/16 | 1 | 24-7/16 | 1520 | 1050 | 930 | 810 | 680 | 610 | 500 | 400 | |
| | | | | | 20-7/16 | 2-6 CL | 24-7/16 | 2240 | 1550 | 1370 | 1190 | 1010 | 900 | 740 | 580 | |
| | | | | | 24-7/16 | 1 | 28-7/16 | 1590 | 1100 | 970 | 840 | 720 | 640 | 520 | 410 | |
| | | | | | 24-7/16 | 2-6 CL | 28-7/16 | 2300 | 1590 | 1400 | 1220 | 1040 | 920 | 760 | 600 | |
| 1-1/4" | S145 | 4-1/4" SQ. | 50 | .032 | 14-7/16 | 1 | 18-7/16 | 1460 | 1010 | 890 | 770 | 660 | 580 | 480 | 380 | |
| | | | | | 20-7/16 | 1 | 24-7/16 | 1535 | 1060 | 940 | 810 | 690 | 610 | 510 | 400 | |
| | | | | | 20-7/16 | 2-6 CL | 24-7/16 | 2240 | 1550 | 1370 | 1190 | 1010 | 900 | 740 | 580 | |
| | | | | | 24-7/16 | 1 | 28-7/16 | 1595 | 1100 | 970 | 850 | 720 | 640 | 530 | 410 | |
| | | | | | 24-7/16 | 2-6 CL | 28-7/16 | 2275 | 1570 | 1390 | 1210 | 1020 | 910 | 750 | 590 | |
| 2" | S242 | 4-1/4" SQ. | 25 | .032 | 14-7/16 | 1 | 18-7/16 | 1090 | 750 | 660 | 580 | 490 | 440 | 360 | 280 | |
| | | | | | 20-7/16 | 1 | 24-7/16 | 1130 | 780 | 690 | 600 | 510 | 450 | 370 | 290 | |
| | | | | | 20-7/16 | 2-6 CL | 24-7/16 | 1830 | 1260 | 1120 | 970 | 820 | 730 | 600 | 480 | |
| | | | | | 24-7/16 | 1 | 28-7/16 | 1150 | 790 | 700 | 610 | 520 | 460 | 380 | 300 | |
| | | | | | 24-7/16 | 2-6 CL | 28-7/16 | 1850 | 1280 | 1130 | 980 | 830 | 740 | 610 | 480 | |
| 2" | S243 | 4-1/4" SQ. | 32 | .032 | 14-7/16 | 1 | 18-7/16 | 1290 | 890 | 790 | 680 | 580 | 520 | 430 | 340 | |
| | | | | | 20-7/16 | 1 | 24-7/16 | 1330 | 920 | 810 | 700 | 600 | 530 | 440 | 350 | |
| | | | | | 20-7/16 | 2-6 CL | 24-7/16 | 2030 | 1400 | 1240 | 1080 | 910 | 810 | 670 | 530 | |
| | | | | | 24-7/16 | 1 | 28-7/16 | 1380 | 950 | 840 | 730 | 620 | 550 | 460 | 360 | |
| | | | | | 24-7/16 | 2-6 CL | 28-7/16 | 2060 | 1420 | 1260 | 1090 | 930 | 820 | 680 | 540 | |
| 24-7/16 | 3-6 CL | 28-7/16 | 2370 | 1640 | 1450 | 1260 | 1070 | 950 | 780 | 620 | | | | | | |

Note:

* Male NPT threads furnished on steel elements. Please use domestic fittings for proper installation.

ELEMENT CENTERLINE DIMENSIONS FOR INSTALLATIONS USING STEAM

STEAM BRACKET W/ BRACKET MOUNTED HANGER



STEAM BRACKET W/ BRACKET MOUNTED HANGER

| ELEMENT TUBE SIZE | FIN SIZE HEIGHT X WIDTH | CRADLE NUMBER | Δ | |
|-------------------|-------------------------|---------------|---------|--------|
| | | | MIN. | MAX. |
| 3/4 COPPER | 3 5/8 x 4 1/4 | 2 | 7 3/8 | 8 3/4 |
| | 4 1/4 x 4 1/4 | 3A | 7 11/16 | 9 1/16 |
| 1" COPPER | 3 5/8 x 4 1/4 | 2 | 7 1/2 | 8 7/8 |
| | 4 1/4 x 4 1/4 | | | |
| 1 1/4 COPPER | 3 5/8 x 4 1/4 | 2 | 7 5/8 | 9" |
| | 4 1/4 x 4 1/4 | | | |
| 1" STEEL | 4 1/4 x 4 1/4 | 2 | 7 5/8 | 9" |
| 1 1/4 STEEL | 4 1/4 x 4 1/4 | 2 | 7 7/8 | 9 1/4 |
| 2" STEEL | 4 1/4 x 4 1/4 | 1 | 7 5/8 | 9" |

