



High Efficiency Condensing, Stainless Steel Hot Water Supply Boiler





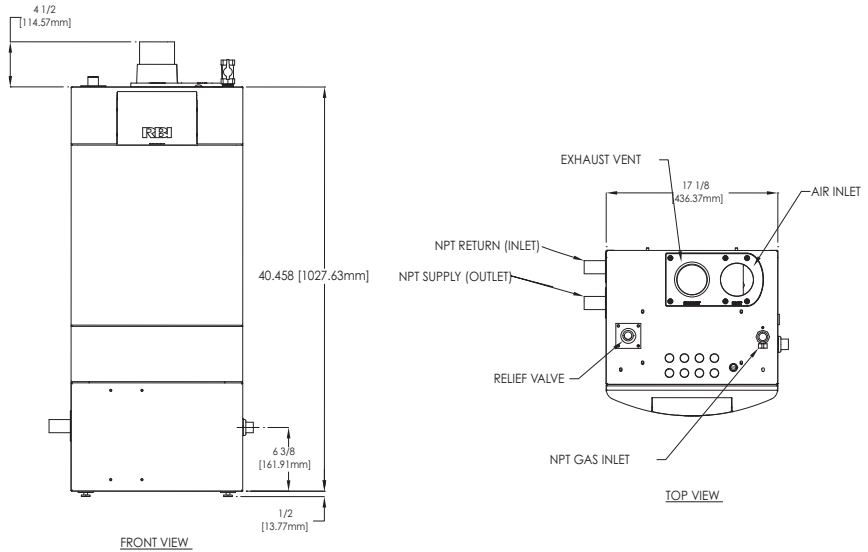
Condensing, Stainless Steel Hot Water Supply Boilers

Infinite Energy, the latest addition to the RBI family of high efficiency condensing hot water supply products operates with combustion efficiencies as high as 97.3% and can be vented through standard schedule 40 PVC piping. It's fully modulating LoNOx commercial-grade stainless steel burner configuration insures optimal efficiencies and superior performance through-

out all firing rates. The Infinite Energy's stainless steel heat exchanger assembly incorporates an integral condensate neutralizer with float switch protection for safe and efficient operation. The direct-vent, sealed combustion Infinite Energy uses a small footprint and zero clearance to combustibles making it the perfect choice for application flexibility.

STANDARD FEATURES

- Up to 97.3% efficient
- Gas Fired – Condensing hot water supply boiler
- 199 MBH – 399 MBH
- Full modulation continuous turndown 5:1
- Low NOx – Environmentally friendly – SCAQMD Rule 1146.2
- Sealed combustion/Direct vent
- Stainless steel ASME heat exchanger
- Pre-Mix gas burner technology
- Integrated control board
- Integrated condensate neutralizer
- 120V Convenience outlet



DIMENSIONS & RATINGS

Model	Input		Output		Net I=B=R Rating		Unit Width		Unit Height		Unit Depth		Exhaust		Inlet Air Vent		Connections		Shipping Weight	
	MBH	kW	MBH	kW	MBH	kW	In.	mm	In.	mm	In.	mm	In.	mm	In.	mm	Gas	Water	lbs.	kgs.
199	199	62	182	53	158	46	24	610	48	1219	21	533	3	76	3	76	1/2"	1"	165	75
399	399	117	373	109	324	95	32	813	50	1270	25	635	4	102	4	102	3/4"	1-1/2"	255	116

TEMPERATURE RISE/PRESSURE DROP

ΔT		IEW-199				IEW-399			
(°F)	(°C)	GPM	L/s	Ft	kPa	GPM	L/s	Ft	GPM
20	11	18.2	1.1	17.1	50.4	37.3	2.4	18.1	53.3



Intertek



260 North Elm Street, Westfield, MA 01085
 Tel. (413) 568-9571 Fax (413) 568-9613
 7555 Tranmere Drive, Mississauga, Ontario L5S 1L4
 Tel. (905) 670-5888 Fax (905) 670-5782
 www.rbiwaterheaters.com



A MESTEK COMPANY