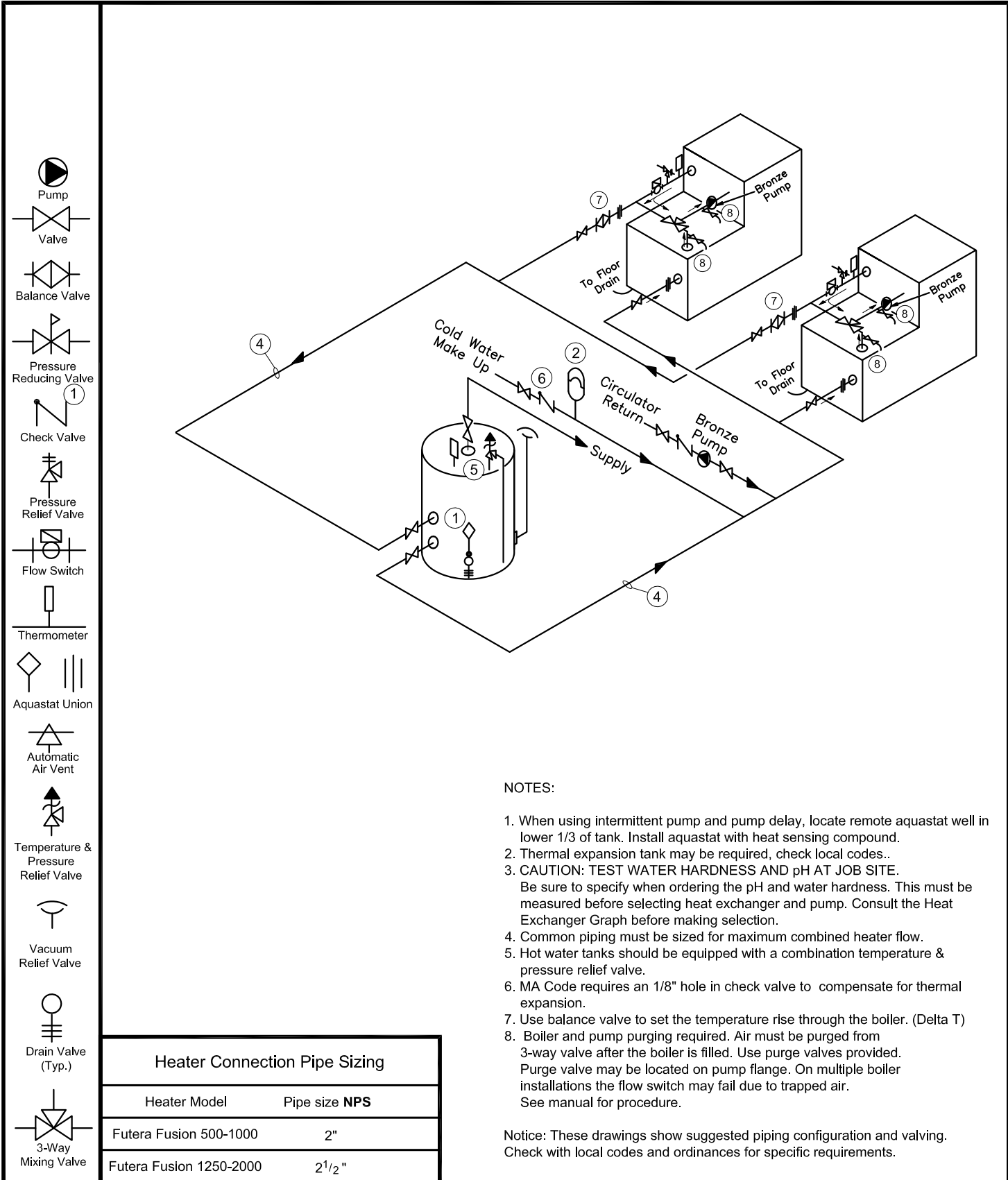


TWO FUTERA FUSION WITH BYPASS PIPING ONE VERTICAL TANK



- Pump
- Valve
- Balance Valve
- Pressure Reducing Valve
- Check Valve
- Pressure Relief Valve
- Flow Switch
- Thermometer
- Aquastat Union
- Automatic Air Vent
- Temperature & Pressure Relief Valve
- Vacuum Relief Valve
- Drain Valve (Typ.)
- 3-Way Mixing Valve

NOTES:

1. When using intermittent pump and pump delay, locate remote aquastat well in lower 1/3 of tank. Install aquastat with heat sensing compound.
2. Thermal expansion tank may be required, check local codes..
3. CAUTION: TEST WATER HARDNESS AND pH AT JOB SITE.
Be sure to specify when ordering the pH and water hardness. This must be measured before selecting heat exchanger and pump. Consult the Heat Exchanger Graph before making selection.
4. Common piping must be sized for maximum combined heater flow.
5. Hot water tanks should be equipped with a combination temperature & pressure relief valve.
6. MA Code requires an 1/8" hole in check valve to compensate for thermal expansion.
7. Use balance valve to set the temperature rise through the boiler. (Delta T)
8. Boiler and pump purging required. Air must be purged from 3-way valve after the boiler is filled. Use purge valves provided. Purge valve may be located on pump flange. On multiple boiler installations the flow switch may fail due to trapped air. See manual for procedure.

Heater Connection Pipe Sizing	
Heater Model	Pipe size NPS
Futera Fusion 500-1000	2"
Futera Fusion 1250-2000	2 1/2"

Notice: These drawings show suggested piping configuration and valving. Check with local codes and ordinances for specific requirements.