

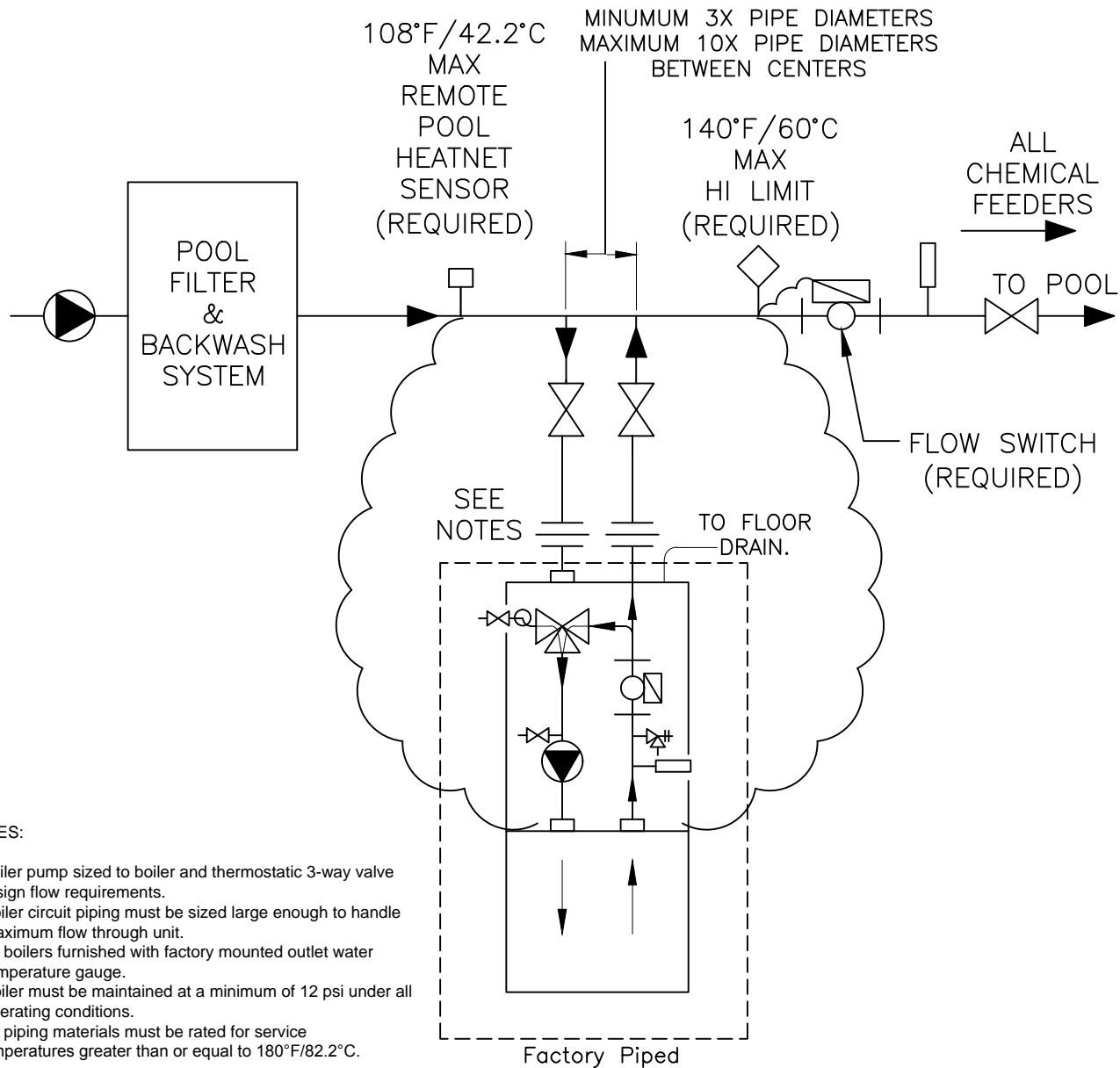


260 North Elm Street - Westfield, MA 01089  
413.568.9571 fax 413.568.9613

# SINGLE BOILER PRIMARY/SECONDARY SWIMMING POOL THERMOSTATIC MIXING VALVE

Variable Low Temperature System

Hydronic Piping H-20  
REV. 2



**NOTES:**

1. Boiler pump sized to boiler and thermostatic 3-way valve design flow requirements.
2. Boiler circuit piping must be sized large enough to handle maximum flow through unit.
3. All boilers furnished with factory mounted outlet water temperature gauge.
4. Boiler must be maintained at a minimum of 12 psi under all operating conditions.
5. All piping materials must be rated for service temperatures greater than or equal to 180°F/82.2°C.

Notice: These drawings show suggested piping configuration and valving. Check with local codes and ordinances for specific requirements.

**LEGEND:**

Backflow-Prevention Device	3-Way Valve	Automatic Air Vent	Aquastat Union	Thermometer	Pressure Relief Valve	Check Valve	Gate Valve	Pump	Pressure Reducing Valve	Expansion Tank

HeatNet Sensor	Flow Switch	Balance Valve