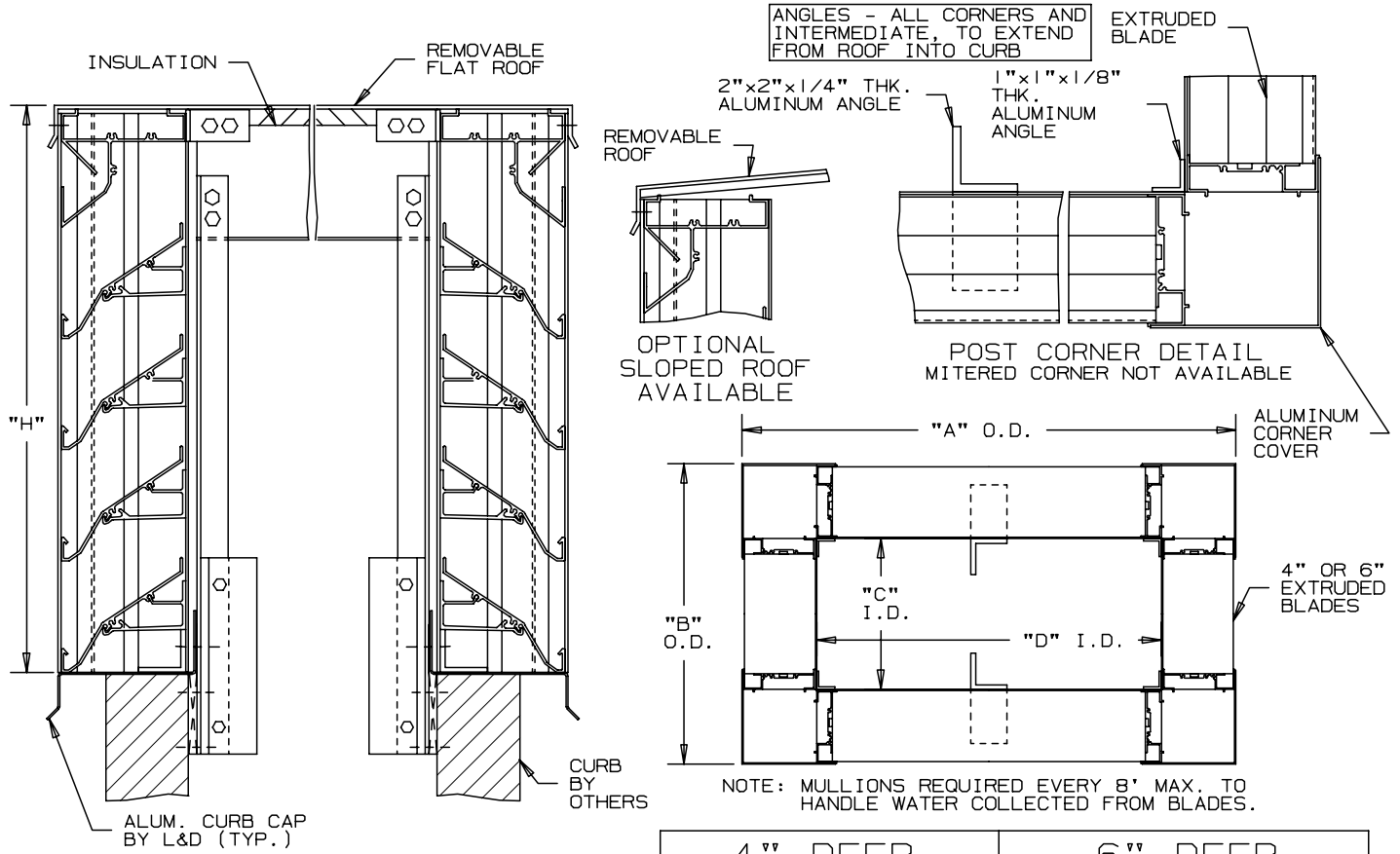


LOUVERS & DAMPERS

LOUVERED PENTHOUSES EXTRUDED ALUMINUM 4" AND 6" DEEP BLADES

INTERIOR FASTENING INSTALLATION POST CORNER - 4" OR 6" BLADE WIDTH DRAINABLE - STATIONARY



4" DEEP	6" DEEP
IP23P "DRAIN" BLADE	IP31P "DRAIN" BLADE

SPECIFICATIONS

MATERIAL: EXTRUDED ALUMINUM SECTIONS OF () .081", () .125" THICKNESS OF 6063-T52/T6 ALLOY. WITH REINFORCING RIB BOSSES.

ROOF: REMOVABLE ROOF .060" THK. SHEET ALUMINUM REINFORCED WITH ALUMINUM BRACING WHERE REQUIRED TO TAKE A SNOW LOAD OF 40 LBS./SQ.FT. PLUS A REQUIRED SAFETY FACTOR.

INSULATION: UNDERSIDE OF ROOF IS LINED WITH 1/2" THK. INSULATION.

SCREENS: (WHEN INDICATED)
BIRD SCREEN - 1/2" SQUARE MESH, 19 GA. GALVANIZED STEEL, ON INTERIOR.

NOTE: PENTHOUSE DIMENSIONS "A" OR "B" EXCEEDING 84" SHALL BE SHIPPED IN SECTIONS FOR FIELD ASSEMBLY BY OTHERS.

ITEM	QTY.	"A"	"B"	"C"	"D"	"H"	MULL	SCREENS	
								TYPE	LOC



LOUVERS & DAMPERS
A Mestek Company
450 Riverside Drive
Wyalusing, PA 18853

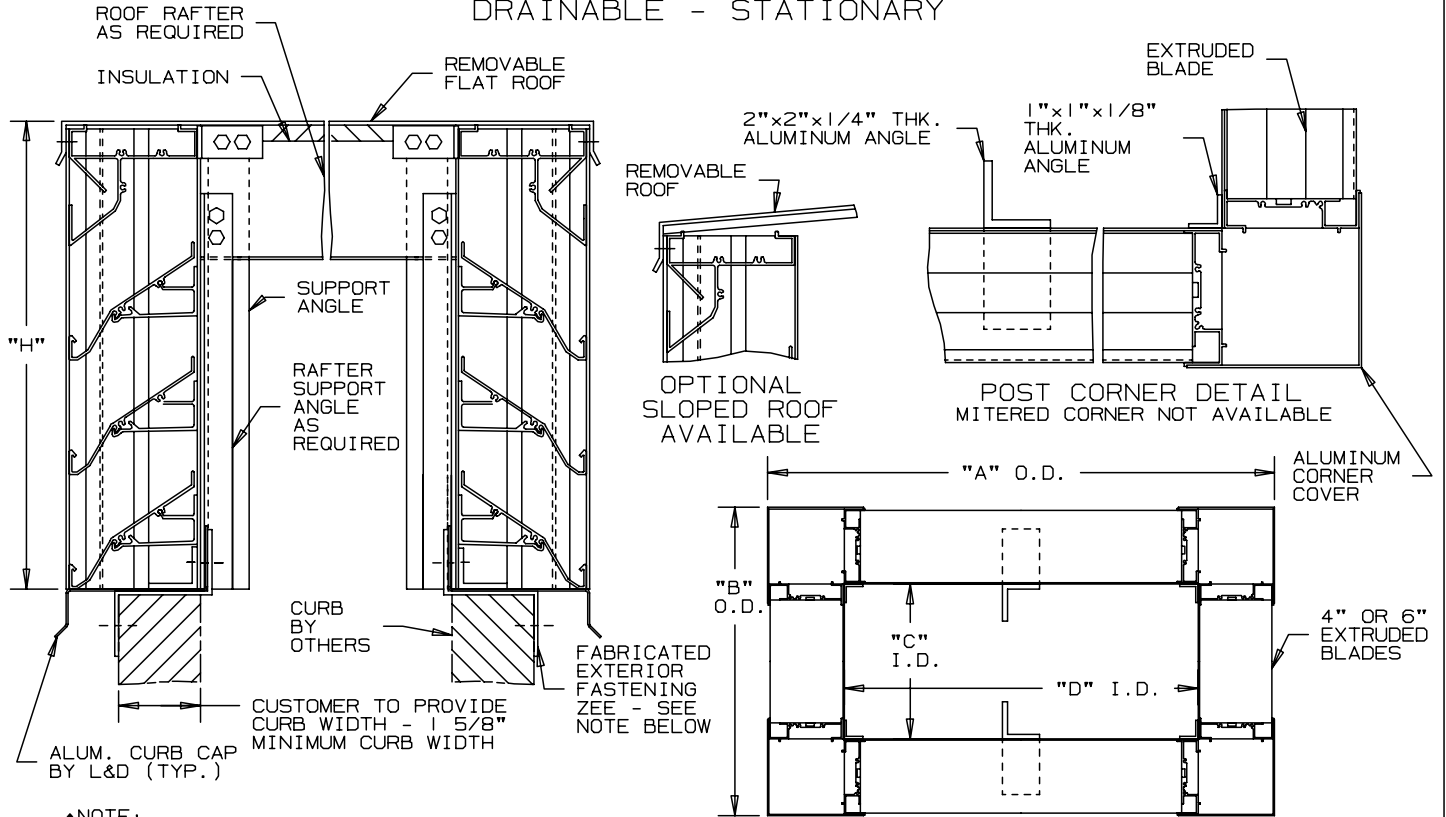
AGENT: _____

ARCH./ENG. :
CONTR. :
PROJECT :
EDR: _____ ECN: _____ JOB: _____
DATE: _____ DWN. : _____ DWG. : _____

LOUVERS & DAMPERS

LOUVERED PENTHOUSES EXTRUDED ALUMINUM 4" AND 6" DEEP BLADES

EXTERIOR FASTENING INSTALLATION POST CORNER - 4" OR 6" BLADE WIDTH DRAINABLE - STATIONARY



•NOTE:
EXTERIOR MOUNTING ZEE CLIPS SUPPLIED 2" LONG, SPACED NO MORE THAN 4" FROM EACH CORNER AND 12" O.C. MAXIMUM.

NOTE: MULLIONS REQUIRED EVERY 8' MAX. TO HANDLE WATER COLLECTED FROM BLADES.

4" DEEP	6" DEEP
IP23P "DRAIN" BLADE	IP31P "DRAIN" BLADE

SPECIFICATIONS

MATERIAL: EXTRUDED ALUMINUM SECTIONS OF () .081", () .125" THICKNESS OF 6063-T52/T6 ALLOY. WITH REINFORCING RIB BOSSES.
ROOF: REMOVABLE ROOF .060" THK. SHEET ALUMINUM REINFORCED WITH ALUMINUM BRACING WHERE REQUIRED TO TAKE A SNOW LOAD OF 40 LBS./SQ.FT. PLUS A REQUIRED SAFETY FACTOR.
INSULATION: UNDERSIDE OF ROOF IS LINED WITH 1/2" THK. INSULATION.
SCREENS: (WHEN INDICATED)
 BIRD SCREEN - 1/2" SQUARE MESH, 19 GA. GALVANIZED STEEL, ON INTERIOR.
NOTE: PENTHOUSE DIMENSIONS "A" OR "B" EXCEEDING 84" SHALL BE SHIPPED IN SECTIONS FOR FIELD ASSEMBLY BY OTHERS.

ITEM	QTY.	"A"	"B"	"C"	"D"	"H"	MULL	TYPE	LOC	CURB WIDTH			
								SCREENS					



LOUVERS & DAMPERS
 A Mestek Company
 450 Riverside Drive
 Wyalusing, PA 18853

AGENT: _____

ARCH./ENG. :
CONTR. :
PROJECT :
EDR: _____ ECN: _____ JOB: _____
DATE: _____ DWN. : _____ DWG. : _____