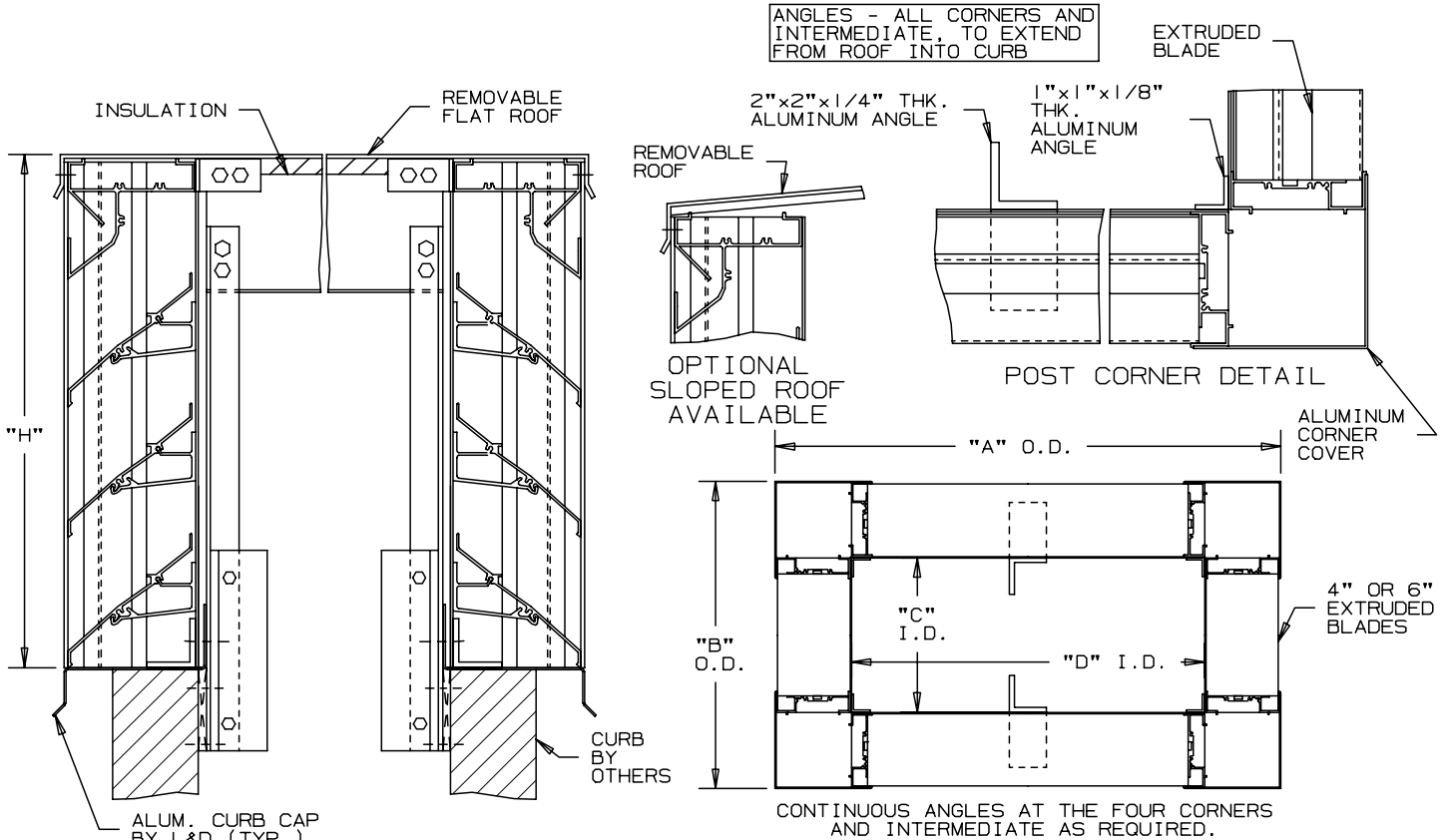


LOUVERS & DAMPERS

LOUVERED PENTHOUSES EXTRUDED ALUMINUM 4" AND 6" DEEP BLADES

INTERIOR FASTENING INSTALLATION POST CORNER - "J/K" BLADE - STATIONARY

ANGLES - ALL CORNERS AND INTERMEDIATE, TO EXTEND FROM ROOF INTO CURB



4" DEEP	6" DEEP
EP48P "J/K" BLADE	EP63P "J/K" BLADE

SPECIFICATIONS

MATERIAL: EXTRUDED ALUMINUM SECTIONS OF () .081", () .125" THICKNESS OF 6063-T52/T6 ALLOY. WITH REINFORCING RIB BOSSES.
 ROOF: REMOVABLE ROOF .060" THK. SHEET ALUMINUM REINFORCED WITH ALUMINUM BRACING WHERE REQUIRED TO TAKE A SNOW LOAD OF 40 LBS./SQ.FT. PLUS A REQUIRED SAFETY FACTOR.
 INSULATION: UNDERSIDE OF ROOF IS LINED WITH 1/2" THK. INSULATION.
 SCREENS: (WHEN INDICATED)
 NOTE: BIRD SCREEN - 1/2" SQUARE MESH, 19 GA. GALVANIZED STEEL, ON INTERIOR. PENTHOUSE DIMENSIONS "A" OR "B" EXCEEDING 84" SHALL BE SHIPPED IN SECTIONS FOR FIELD ASSEMBLY BY OTHERS.

ITEM	QTY.	"A"	"B"	"C"	"D"	"H"	MULL	SCREENS		UNION MADE
								TYPE	LOC	



LOUVERS & DAMPERS

A Mestek Company

450 Riverside Drive
Wyalusing, PA 18853

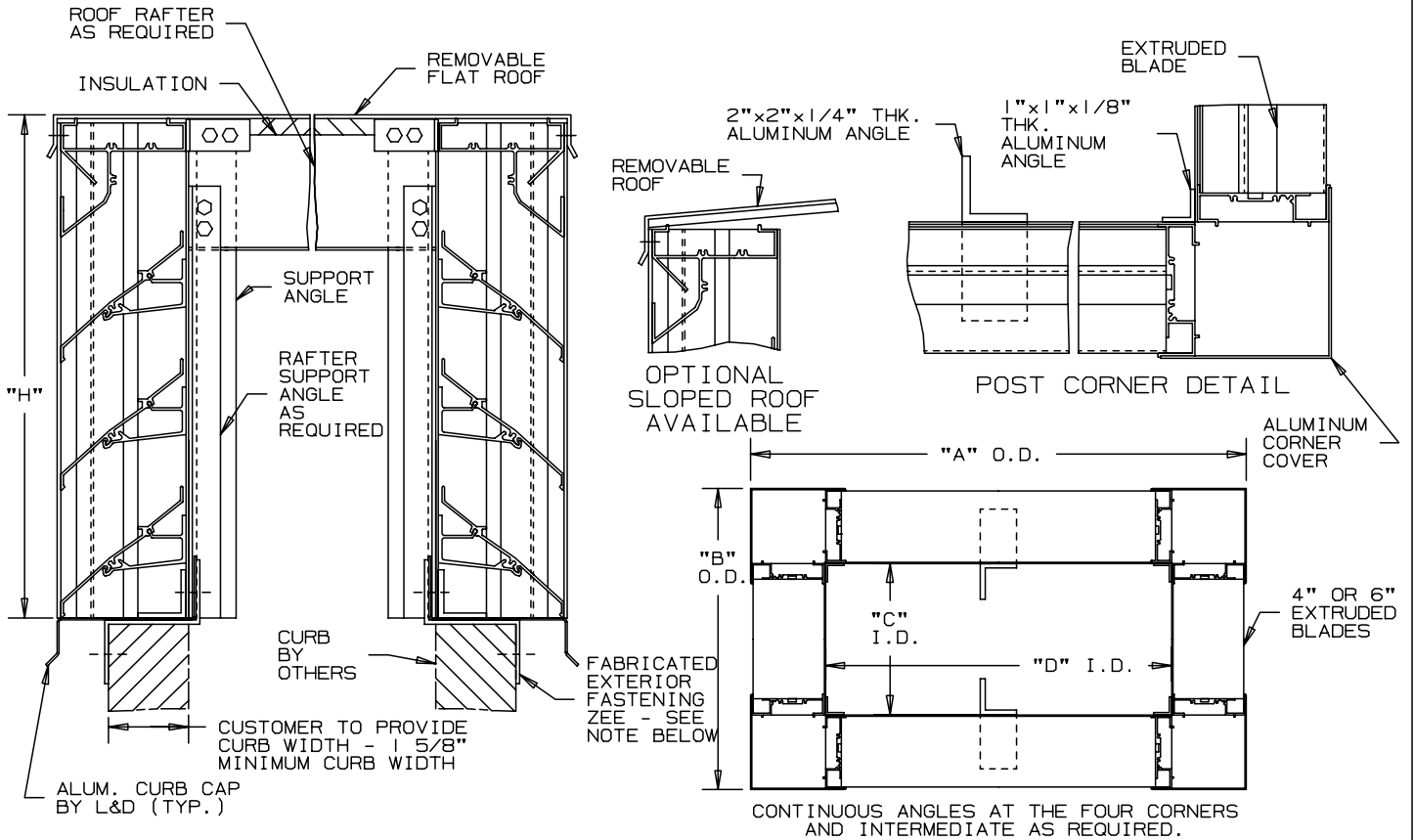
AGENT: _____

ARCH./ENG. :		
CONTR. :		
PROJECT :		
EDR :	ECN :	JOB :
DATE :	DWN. :	DWG. :

LOUVERS & DAMPERS

LOUVERED PENTHOUSES EXTRUDED ALUMINUM 4" AND 6" DEEP BLADES

EXTERIOR FASTENING INSTALLATION POST CORNER - "J/K" BLADE - STATIONARY




*NOTE:
EXTERIOR MOUNTING ZEE CLIPS SUPPLIED 2"
LONG, SPACED NO MORE THAN 4" FROM EACH
CORNER AND 12" O.C. MAXIMUM.

4" DEEP	6" DEEP
EP48P "J/K" BLADE	EP63P "J/K" BLADE

SPECIFICATIONS

MATERIAL: EXTRUDED ALUMINUM SECTIONS OF () .081", () .125" THICKNESS OF 6063-T52/T6 ALLOY. WITH REINFORCING RIB BOSSES.
 ROOF: REMOVABLE ROOF .060" THK. SHEET ALUMINUM REINFORCED WITH ALUMINUM BRACING WHERE REQUIRED TO TAKE A SNOW LOAD OF 40 LBS./SQ.FT. PLUS A REQUIRED SAFETY FACTOR.
 INSULATION: UNDERSIDE OF ROOF IS LINED WITH 1/2" THK. INSULATION.
 SCREENS: (WHEN INDICATED)
 BIRD SCREEN - 1/2" SQUARE MESH, 19 GA. GALVANIZED STEEL, ON INTERIOR.
 NOTE: PENTHOUSE DIMENSIONS "A" OR "B" EXCEEDING 84" SHALL BE SHIPPED IN SECTIONS FOR FIELD ASSEMBLY BY OTHERS.

ITEM	QTY.	"A"	"B"	"C"	"D"	"H"	MULL	TYPE	LOC	CURB WIDTH	 UNION MADE
								SCREENS			



LOUVERS & DAMPERS
 A Mestek Company
 450 Riverside Drive
 Wyalusing, PA 18853

AGENT: _____

ARCH./ENG. :		
CONTR. :		
PROJECT :		
EDR: _____	ECN: _____	JOB: _____
DATE: _____	DWN. : _____	DWG. : _____