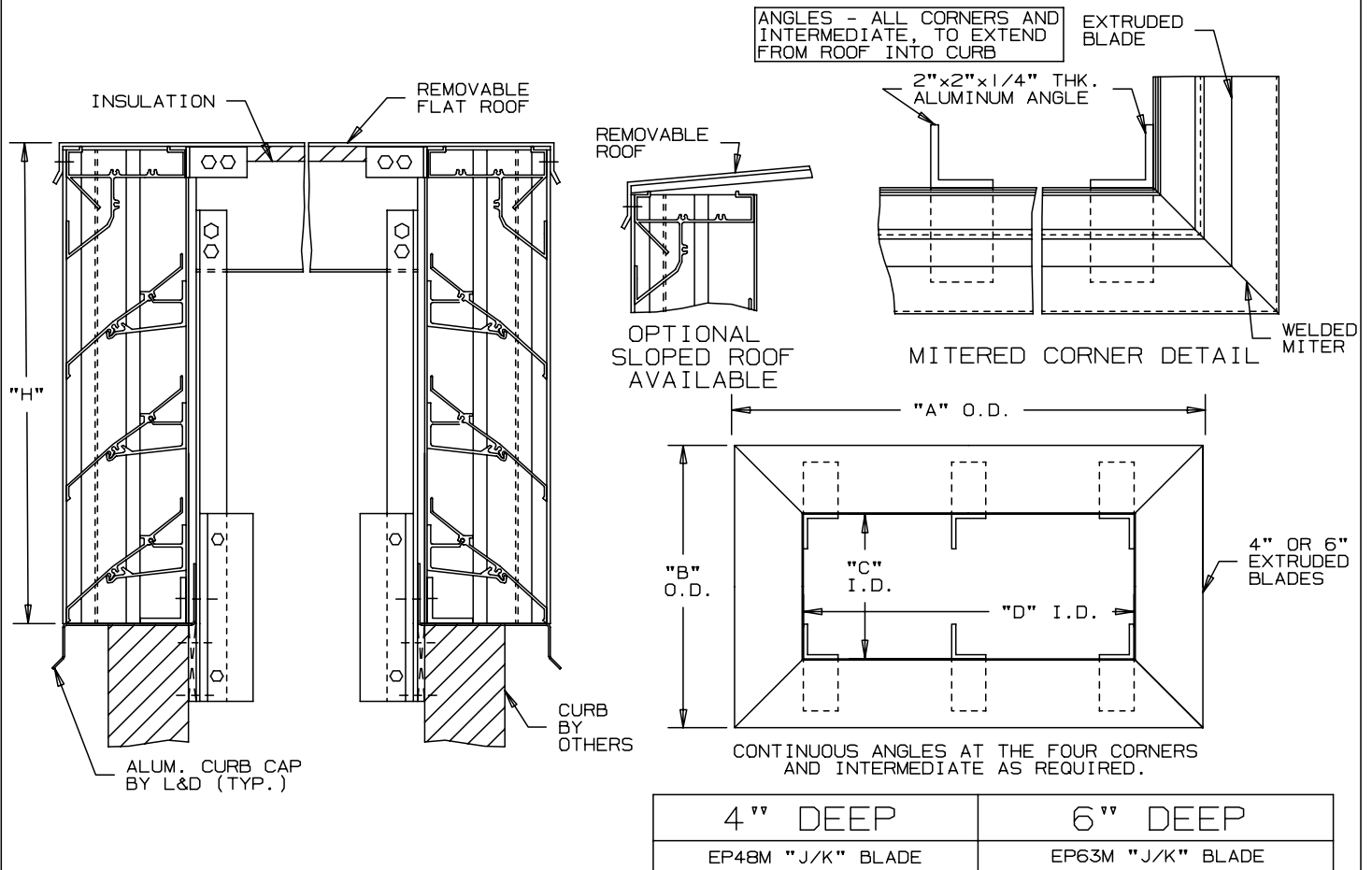


# LOUVERS & DAMPERS

## LOUVERED PENTHOUSES EXTRUDED ALUMINUM 4" AND 6" DEEP BLADES

### INTERIOR FASTENING INSTALLATION MITERED CORNER - "J/K" BLADE - STATIONARY



### SPECIFICATIONS

MATERIAL: EXTRUDED ALUMINUM SECTIONS OF ( ) .081", ( ) .125" THICKNESS OF 6063-T52/T6 ALLOY. WITH REINFORCING RIB BOSSES.

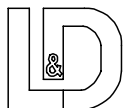
ROOF: REMOVABLE ROOF .060" THK. SHEET ALUMINUM REINFORCED WITH ALUMINUM BRACING WHERE REQUIRED TO TAKE A SNOW LOAD OF 40 LBS./SQ.FT. PLUS A REQUIRED SAFETY FACTOR.

INSULATION: UNDERSIDE OF ROOF IS LINED WITH 1/2" THK. INSULATION.

SCREENS: (WHEN INDICATED)  
BIRD SCREEN - 1/2" SQUARE MESH, 19 GA. GALVANIZED STEEL, ON INTERIOR.

NOTE: PENTHOUSE DIMENSIONS "A" OR "B" EXCEEDING 84" SHALL BE SHIPPED IN SECTIONS FOR FIELD ASSEMBLY BY OTHERS.

ITEM	QTY.	"A"	"B"	"C"	"D"	"H"	MULL	SCREENS		UNION MADE
								TYPE	LOC	



**LOUVERS & DAMPERS**  
A Mestek Company  
450 Riverside Drive  
Wyalusing, PA 18853

AGENT: \_\_\_\_\_

ARCH./ENG. :
CONTR. :
PROJECT :
EDR:                      ECN:                      JOB:
DATE:                      DWN. :                      DWG. :

