

Model 5KK21

Air-Cooled Portable Air Conditioner

Submittal Data



SD-5KK21-2

STANDARD FEATURES

- 21,000 Btu Cooling Capacity
- Spot-Cool / Room-Cool Thermostat Settings
- Internally Insulated with Fiberglass Insulation
- Thermostatic Control with Multi-Speed Fan
- Separate Direct Drive Fan Motors
- R410A Refrigerant
- Optional Easy Install Condensate Pump Kit
- With Overflow Protection
- 230V/1 Phase
- Directional Nozzles (2)
- Heavy Duty Twin Wheel Casters for Portability
- Self-Diagnostic System
- Off-Timer
- Washable Filters

SAFETY DEVICES

- Compressor Overload Protection
- Anti-freezing Thermistor
- Full Drain Tank Switch
- Automatic Restart (Power Interruption)
- Compressor Time Delay Program
- High Pressure Switch

SPECIFICATIONS

Model Number	5KK21
Cooling Capacity	21,000 Btu/hr
Cooling Test Conditions	95°F
Voltage/Phase/Hz	230/1/60
Amperage	10
Fuse Size	15 Amps*
LCDI Plug Configuration	NEMA 6-15P
Power Cord Length	10'
Refrigerant Type	R410A
Dimensions	50.4"H x 22"W x 24.4"D
Net Weight	198 Lbs
Shipping Weight	216 Lbs
Condensate Tank Capacity	3.17 Gal

*Time delay fuses and circuit breakers are recommended



ADDITIONAL SPECIFICATIONS

Ambient Temperature Range	64-113°F
Setting Temperature (Room Cool)	64-86°F
Setting Temperature (Spot Cool)	32-86°F
Application Area Ft ² (Room Cool Mode)	527
Refrigerant Type / Ounces	R410A / 42.5
Design Pressure High/Low	450 / 250 PSIG
Indoor Air Flow High/Low	512/477 CFM
Hot Air Duct Diameter	16"
Maximum Exhaust Duct Length	30'



260 North Elm St.
 Westfield, MA 01085
Phone: 413-564-5520
Fax: 413-564-5815
 www.Koldwave.com

Project: _____ Date: _____

Location: _____

Customer: _____

Engineer: _____

Submitted By: _____

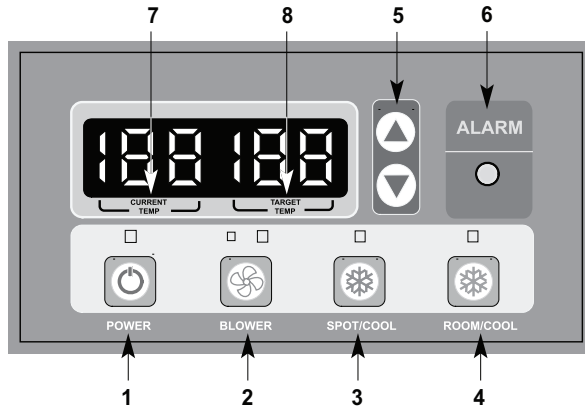
For: Reference Approval Construction

Unit Designation: _____

Schedule Number: _____

Model 5KK21-Submittal Data

CONTROL PANEL

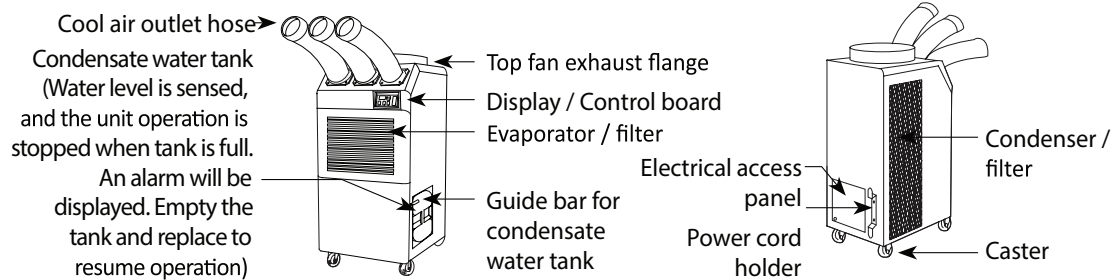


Control Panel Key Buttons:

1. Power
2. Blower
3. Spot/Cool
4. Room/Cool
5. Set Temperature
6. Alarm
7. Current Temperature
8. Target Temperature

COMPONENT PARTS

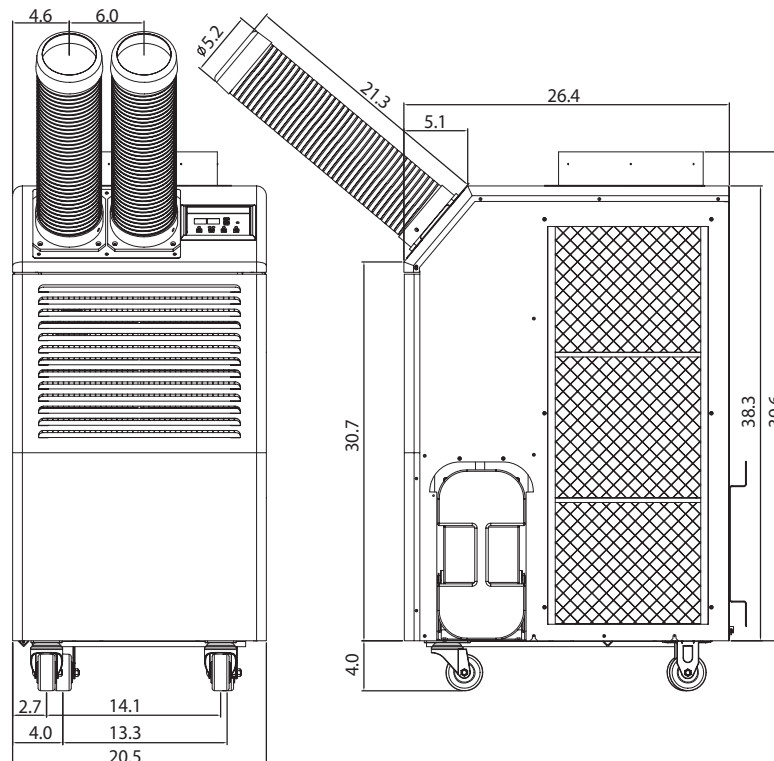
Component Parts



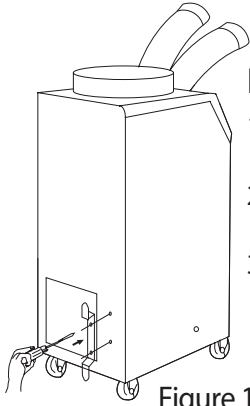
Front and Right Side View

- Back and Left Side View

DIMENSIONS (In Inches)



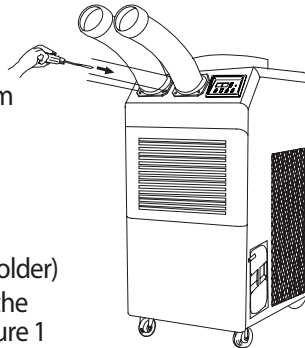
ASSEMBLY



POWER CORD HOLDER

1. Take out the cord holder from the accessory box.
2. Place the cord holder on the back side of air conditioner.
3. Use screws (enclosed inside of accessory box with cord holder) to install the cord holder on the air conditioner as shown Figure 1

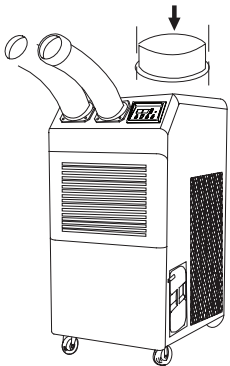
Figure 1



DISCHARGE DUCTS/SUPPLY AIR DUCT

1. Remove cool air outlet hose(s) from carton.
2. Place the cool air outlet hose(s) on the front top of air conditioner.
3. Use screws (enclosed inside of box with cool air outlet hose(s) to install the cool air outlet hose(s) on the air conditioner as shown in Figure 2.

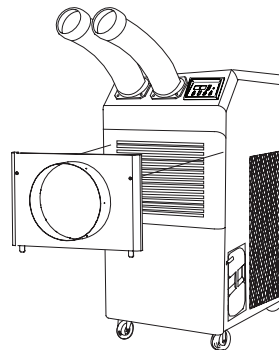
Figure 2



TOP FAN EXHAUST FLANGE

1. Remove the top fan exhaust flange from carton.
2. Place the top fan exhaust flange on the top of air conditioner.
3. Use screws (enclosed inside of box with the top fan exhaust flange) to install the top fan exhaust flange on air conditioner as shown in Figure 3

Figure 3

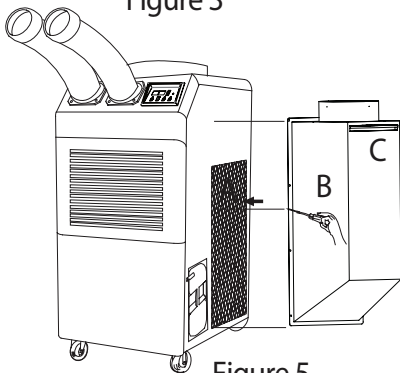


EVAPORATOR PLENUM (Optional)

An evaporator plenum can be purchased separately. Plenum fits over the evaporator to duct evaporator air to the unit to improve cooling efficiency.

1. Remove the evaporator cover from the unit.
2. Remove the filter from the evaporator cover and put it into the plenum.
3. Install the plenum in front of the evaporator.

Figure 4



AMBIENT AIR ADAPTER (Optional)

An ambient air adapter can be purchased separately. Air adapter fits over the condenser to duct condenser air to the unit to improve cooling efficiency.

1. Remove the Filter("A")
2. Check the Filter("C") is inserted properly in Intake Warm Air Duct("B")
3. Install "B" which contains "C" by using driver with enclosed bolts(6EA) as Figure 5.

Figure 5

Model 5KK21-Submittal Data

Accessory Parts

Part Name	Part Number
Condensate pump kit (220V)	SA057-0073
Condenser plenum/return air adapter	SA076-4004
Remote controller (26 ft with line)	SA076-4006
16 FT Temperature Sensor	SA076-4007
Cool air duct connecting flange (D5", L3")	SA076-4008
Long cool air duct assembly (D5",L40")	SA076-4009
Evaporator plenum	SA076-4005
Exhaust flange adapter	SA076-3311
Condenser discharge kit	SA076-3645
Condenser return/discharge kit	SA076-3635
Replacement washable filter, evaporator	KWPCFLT-02E
Replacement washable filter, condenser	KWPCFLT-02C