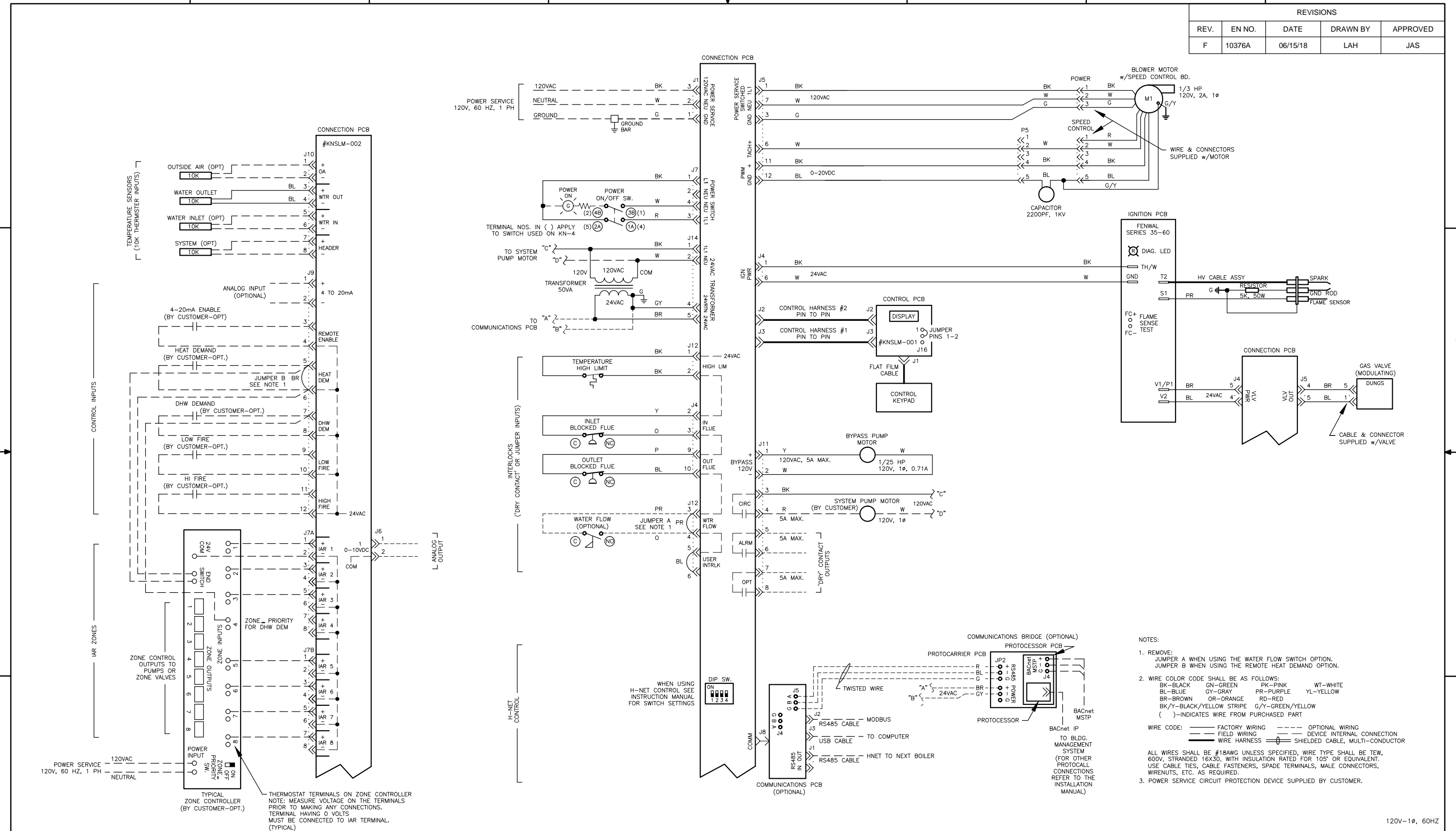


REVISIONS				
REV.	EN NO.	DATE	DRAWN BY	APPROVED
F	10376A	06/15/18	LAH	JAS



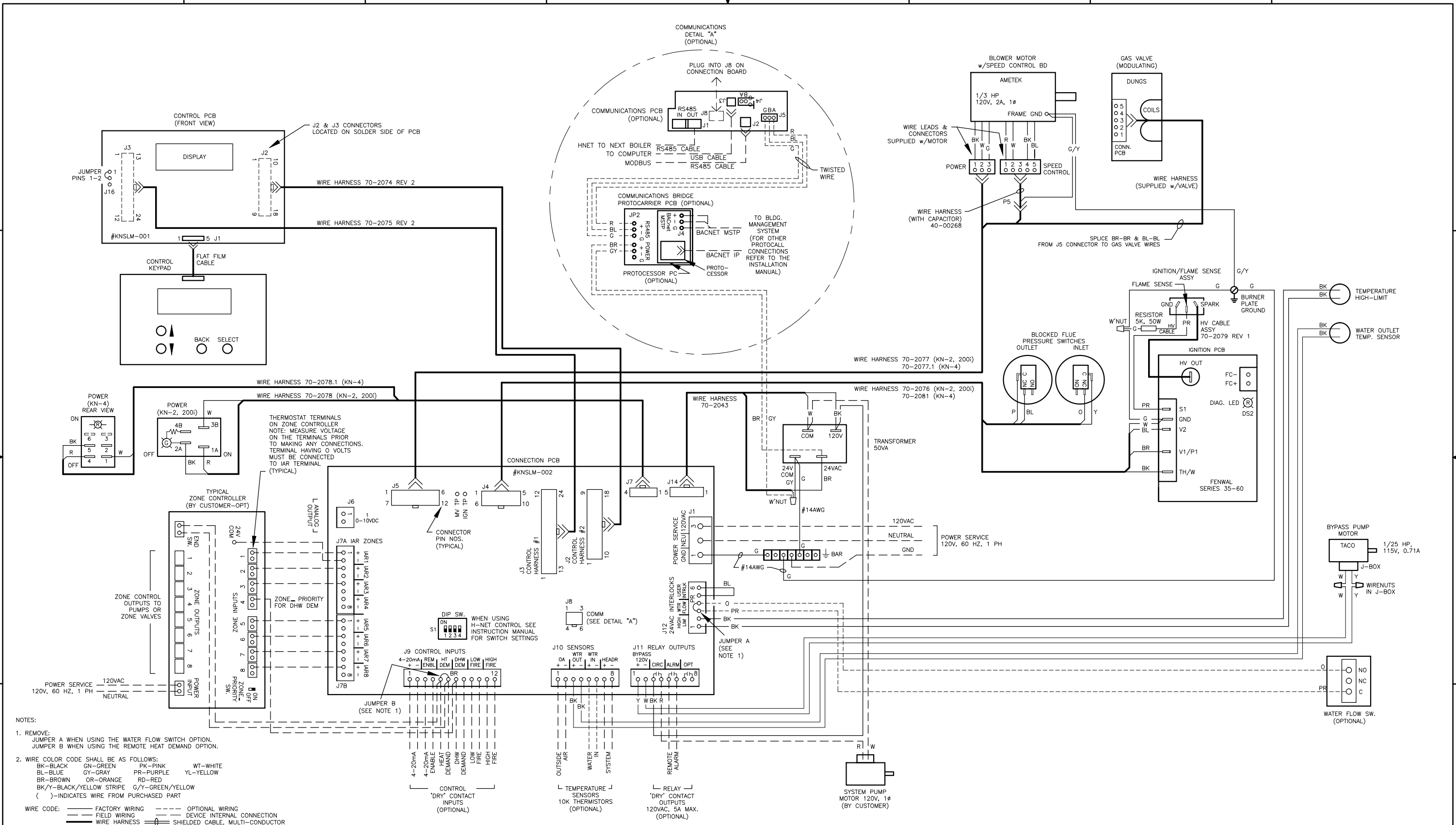
- NOTES:
- REMOVE: JUMPER A WHEN USING THE WATER FLOW SWITCH OPTION. JUMPER B WHEN USING THE REMOTE HEAT DEMAND OPTION.
 - WIRE COLOR CODE SHALL BE AS FOLLOWS:
 BK-BLACK GN-GREEN PK-PINK WT-WHITE
 BL-BLUE GR-GRAY PR-PURPLE YL-YELLOW
 BR-BROWN OR-ORANGE RD-RED
 BK/Y-BLACK/YELLOW STRIPE G/Y-GREEN/YELLOW
 () INDICATES WIRE FROM PURCHASED PART
 WIRE CODE: ——— FACTORY WIRING - - - - - OPTIONAL WIRING
 ——— FIELD WIRING - - - - - DEVICE INTERNAL CONNECTION
 ——— WIRE HARNESS - - - - - SHIELDED CABLE, MULTI-CONDUCTOR
 - ALL WIRES SHALL BE #18AWG UNLESS SPECIFIED, WIRE TYPE SHALL BE TEW, 600V, STRANDED 16X30, WITH INSULATION RATED FOR 105° OR EQUIVALENT. USE CABLE TIES, CABLE FASTENERS, SPADE TERMINALS, MALE CONNECTORS, WIRENUTS, ETC. AS REQUIRED.
 - POWER SERVICE CIRCUIT PROTECTION DEVICE SUPPLIED BY CUSTOMER.

120V-1φ, 60HZ

DIVISION	PRODUCT	DRAWN BY	DATE	DRAWING DESCRIPTION				
ATH	KN-2 TO 4	RT	11/20/07	LADDER DIAGRAM				
THE PRINT AND ALL INFORMATION THEREON IS PROPERTY OF THE ATH DIVISION OF MESTEK, INC. NEITHER THE PRINT NOR THE INFORMATION THEREON MAY BE REPRODUCED OR USED IN ANY MANNER WHATSOEVER OR DIVULGED TO ANY OTHER PERSON UNLESS SPECIFICALLY AUTHORIZED BY MESTEK, INC.			CHECKED BY	DATE	DRAWING NUMBER			
			N/A	N/A	42-5801			
			APPROVED BY	DATE	SHEET	SHEET SIZE	SCALE	REVISION
			N/A	N/A	1 of 2	B	N/A	F

D
C
B
A

D
C
B
A



NOTES:

- REMOVE:
JUMPER A WHEN USING THE WATER FLOW SWITCH OPTION.
JUMPER B WHEN USING THE REMOTE HEAT DEMAND OPTION.
- WIRE COLOR CODE SHALL BE AS FOLLOWS:
BK-BLACK GN-GREEN PK-PINK
BL-BLUE GY-GRAY PR-PURPLE WT-WHITE
BR-BROWN OR-ORANGE RD-RED
BK/Y-BLACK/YELLOW STRIPE G/Y-GREEN/YELLOW
()-INDICATES WIRE FROM PURCHASED PART
- ALL WIRES SHALL BE #18AWG UNLESS SPECIFIED. WIRE TYPE SHALL BE TEW, 600V, STRANDED 16X30, WITH INSULATION RATED FOR 105° OR EQUIVALENT. USE CABLE TIES, CABLE FASTENERS, SPADE TERMINALS, MALE CONNECTORS, WIRENUTS, ETC. AS REQUIRED.
- ALL WIRES SHALL BE #18AWG UNLESS SPECIFIED. WIRE TYPE SHALL BE TEW, 600V, STRANDED 16X30, WITH INSULATION RATED FOR 105°C OR EQUIVALENT.
- USE CABLE TIES, CABLE FASTENERS, SPADE TERMINALS, MALE CONNECTORS, WIRENUTS, ETC. AS REQUIRED.
- POWER SERVICE CIRCUIT PROTECTION DEVICE SUPPLIED BY CUSTOMER.

WIRE CODE: ——— FACTORY WIRING - - - - - OPTIONAL WIRING
 - - - - - FIELD WIRING - - - - - DEVICE INTERNAL CONNECTION
 ——— WIRE HARNESS ——— SHIELDED CABLE, MULTI-CONDUCTOR

ALL WIRES SHALL BE #18AWG UNLESS SPECIFIED, WIRE TYPE SHALL BE TEW, 600V, STRANDED 16X30, WITH INSULATION RATED FOR 105° OR EQUIVALENT. USE CABLE TIES, CABLE FASTENERS, SPADE TERMINALS, MALE CONNECTORS, WIRENUTS, ETC. AS REQUIRED.

3. ALL WIRES SHALL BE #18AWG UNLESS SPECIFIED. WIRE TYPE SHALL BE TEW, 600V, STRANDED 16X30, WITH INSULATION RATED FOR 105°C OR EQUIVALENT.

4. USE CABLE TIES, CABLE FASTENERS, SPADE TERMINALS, MALE CONNECTORS, WIRENUTS, ETC. AS REQUIRED.

5. POWER SERVICE CIRCUIT PROTECTION DEVICE SUPPLIED BY CUSTOMER.

DIVISION	PRODUCT	DRAWN BY	DATE	DRAWING DESCRIPTION		
ATH	KN-2 TO 4	RT	11/20/07	LADDER DIAGRAM		
THE PRINT AND ALL INFORMATION THEREON IS PROPERTY OF THE ATH DIVISION OF MESTEK, INC. NEITHER THE PRINT NOR THE INFORMATION THEREON MAY BE REPRODUCED OR USED IN ANY MANNER WHATSOEVER OR DIVULGED TO ANY OTHER PERSON UNLESS SPECIFICALLY AUTHORIZED BY MESTEK, INC.		CHECKED BY	DATE	DRAWING NUMBER		
		N/A	N/A	42-5801		
		APPROVED BY	DATE	SHEET	SHEET SIZE	SCALE
		N/A	N/A	2 of 2	B	N/A
						REVISION
						F