

# CELSIOR

## Submittal Data

Residential  
Wall-Mounted Gas Boiler

### “COMBI” GAS-FIRED BOILER

**Celsior, Embassy’s latest wall-mounted combination boiler and water heater offers the highest near-condensing performance efficiencies available today.**

Celsior’s innovative high operating boiler design is fully-modulating and completely packaged with operating efficiencies of 85%. All units have built-in circulator pumps, expansion tanks and air eliminators for ease of installation and service.

Instantaneous domestic hot water production of over 4 GPM provides enough hot water for today’s multi-faceted lifestyles. Celsior uses the AquaGuard filter system which prevents impurities from entering the domestic water heat exchanger for superior performance and durability.

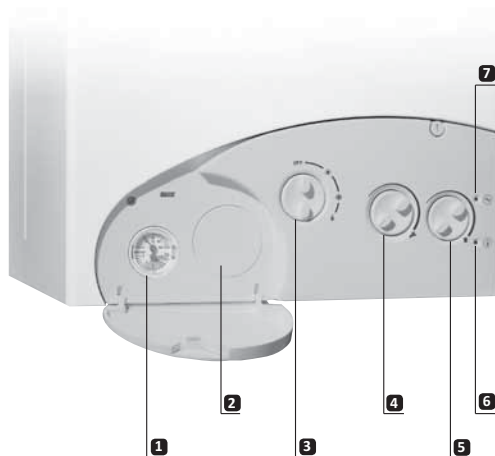
Loaded with features, Celsior boilers are equipped with ionisation ignition systems and an electronic control interface that continuously monitors system performance to seamlessly meet the demands of both heating and domestic hot water production.

### STANDARD FEATURES

- Full Modulation
- 85% Operating Efficiency
- Copper-Fin Primary Heat Exchanger
- Flow switch & Freeze Protection
- Integrated Pump, Expansion Tank & Air Separator
- 3-Way Valve
- Side-Wall Vent Kit
- Isolation Valve Kit
- 4 GPM Instantaneous DHW
- AquaGuard Filter System
- Natural or LP Gas

| Quantity | Model Number   | Description          |
|----------|----------------|----------------------|
| _____    | □ Celsior 35BF | Combination Heat/DHW |

Celsior’s easy-to-use integrated control panel is simple and intuitive for ease of set-up. It’s LED diagnostic sytem shows operational performance and can be used for accurate trouble-shooting as well.



#### List of Functions/Instuments

- |  |   |
|--|---|
| 1 Tridicator   | 5 C.H. potentiometer (104-176°F / 40-80°C)                      |
| 2 Time programmer seat                               | 6 Red LED: irregular and/or incorrect operation                 |
| 3 Rotary switch (off, summer, winter, chimney sweep) | 7 Green LED: fixed: power is on - flashing: autodiagnosis modey |
| 4 D.H.W. potentiometer (86-140°F / 30-60°C)          |   |



345 Oser Avenue, Hauppauge, NY 11788  
(631) 694-1800 Fax: (631) 694-1832  
www.embassyind.com

A MESTEK COMPANY

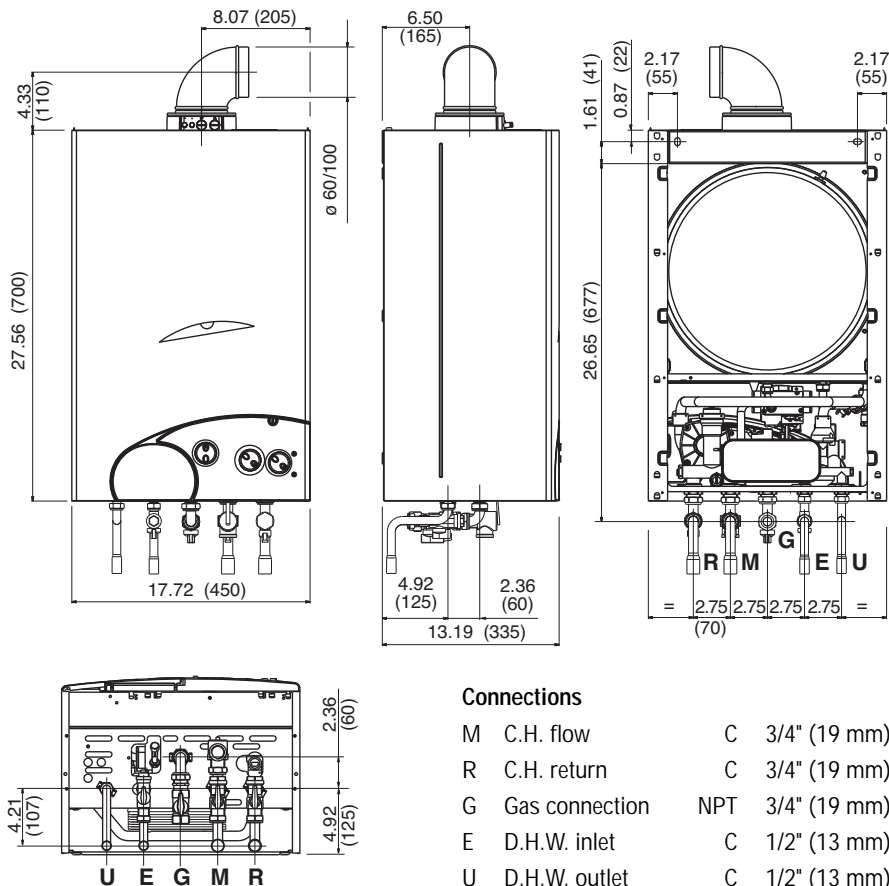
PROJECT: \_\_\_\_\_ DATE: \_\_\_\_\_  
 LOCATION: \_\_\_\_\_  
 ARCHITECT: \_\_\_\_\_  
 ENGINEER: \_\_\_\_\_  
 CONTRACTOR: \_\_\_\_\_  
 PO NUMBER: \_\_\_\_\_

# CELSIOR

## Submittal Data

Residential  
Wall-Mounted Gas Boiler

### DIMENSIONAL DATA



#### Connections

|   |                |     |              |
|---|----------------|-----|--------------|
| M | C.H. flow      | C   | 3/4" (19 mm) |
| R | C.H. return    | C   | 3/4" (19 mm) |
| G | Gas connection | NPT | 3/4" (19 mm) |
| E | D.H.W. inlet   | C   | 1/2" (13 mm) |
| U | D.H.W. outlet  | C   | 1/2" (13 mm) |

### RATINGS AND ENGINEERING DATA

|  |                 | Natural Gas     | Propane Gas     |
|--|-----------------|-----------------|-----------------|
| Maximum input                                      | Btu/h (kW)      | 133,800 (39.2)  | 120,000 (35.2)  |
| Minimum input                                      | Btu/h (kW)      | 79,200 (23.2)   | 72,700 (21.3)   |
| Maximum output                                     | Btu/h (kW)      | 111,700 (32.7)  | 106,300 (31.1)  |
| Minimum output                                     | Btu/h (kW)      | 66,900 (19.6)   | 60,700 (17.8)   |
| Water content                                      | Gal (l)         | 2.1 (8)         | 2.1 (8)         |
| Electrical power consumption                       | W               | 165             | 165             |
| Maximum C.H. pressure                              | psi (bar)       | 43.5 (3)        | 43.5 (3)        |
| Maximum C.H. temperature                           | °F (C)          | 185 (85)        | 185 (85)        |
| Expansion vessel capacity                          | Gal (l)         | 2.1 (8)         | 2.1 (8)         |
| Expansion vessel precharging pressure              | psi (bar)       | 14.5 (1)        | 14.5 (1)        |
| C.H. setting range                                 | °F (C)          | 104-176 (40-80) | 104-176 (40-80) |
| D.H.W. setting range                               | °F (C)          | 86-140 (30-60)  | 86-140 (30-60)  |
| Continuous D.H.W. flow rate $\Delta t$ 54°F (30°C) | Gal/min (l/min) | 4.09 (15.5)     | 3.89 (14.7)     |
| Minimum D.H.W. flow rate                           | Gal/min (l/min) | 0.63 (2.4)      | 0.63 (2.4)      |
| Minimum D.H.W. pressure                            | psi (bar)       | 7.3 (0.5)       | 7.3 (0.5)       |
| Maximum D.H.W. pressure                            | psi (bar)       | 125 (8.6)       | 125 (8.6)       |
| Vent category                                      |                 | III             | III             |
| Weight   | lb (kg)         | 88.2 (40)       | 88.2 (40)       |



This product is certified to the California Energy Commission in accordance with California law. Massachusetts Board of Plumbers and Gas Fitters Approval Code C1-0611-394.