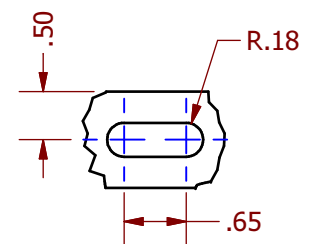


SIZE NOTE LENGTH				
NOM (in/mm)	BL (in)	CL (in)	BS (in)	INTER SC (in)
24 (610)	24	17.70	16.13	-
36 (915)	36	29.70	28.13	-
48 (1220)	48	41.70	40.13	-
60 (1525)	60	53.70	52.13	-
72 (1830)	72	65.70	64.13	32.06
84 (2135)	84	77.70	76.13	38.06
96 (2440)	96	89.70	88.13	44.06
108 (2745)	108	101.70	100.13	33.38
120 (3050)	120	113.70	112.13	37.38

SIZE NOTE WIDTH			
NOM (in)	CW (in)	BW (in)	PC (PIPE CTRS) (in)
10	10	12	8
14	14	16	12
18	18	20	16
22	22	24	20
26	26	28	24
30	30	32	28



SUPPORT SLOT  
DETAIL A

NOTES:

- DRAWING INDICATES 48" NOM LENGTH AND 10" NOM WIDTH PASSIVE BEAM (REFER TO MODEL SIZE NOTES).
- COIL WILL BE FITTED WITH SIDE PANELS DOWN BOTH SIDES WHICH WILL BE ATTACHED USING RIVETS ONTO THE COIL STIFFENERS.
- ADDITIONAL SUPPORT SLOTS SUPPLIED BASED ON LENGTH. CENTER DIMENSIONS INDICATED IN TABLE (INTER SC).

DADANCO PASSIVE BEAM SUBMITTAL DRAWING				
<b>STRICTLY CONFIDENTIAL</b>			<b>DADANCO LLC</b>	
<small>DADANCO LLC 260 North Elm Street WESTFIELD, MA 01085 Ph. (413) 564-5657, Fax. (413) 568-2969 www.dadanco.com</small>			<b>DPB</b> <b>PASSIVE BEAM ABOVE CEILING</b>	
DRN	TS	6/5/2012	TITLE	
CKD	CR	6/5/2012	DPB	
APPD	DH	6/5/2012	PASSIVE BEAM ABOVE CEILING	
ISSUED			PROJECT NO:	File Name:
UNLESS NOTED OTHERWISE ALL DIMENSIONS IN INCHES		ANSI STANDARD	SCALE:	Passive Beam.iam
ANGULAR TOL: 1.0° LINEAR TOL: ±0.02"				SHEET: 1 / 1
			RELEASE	