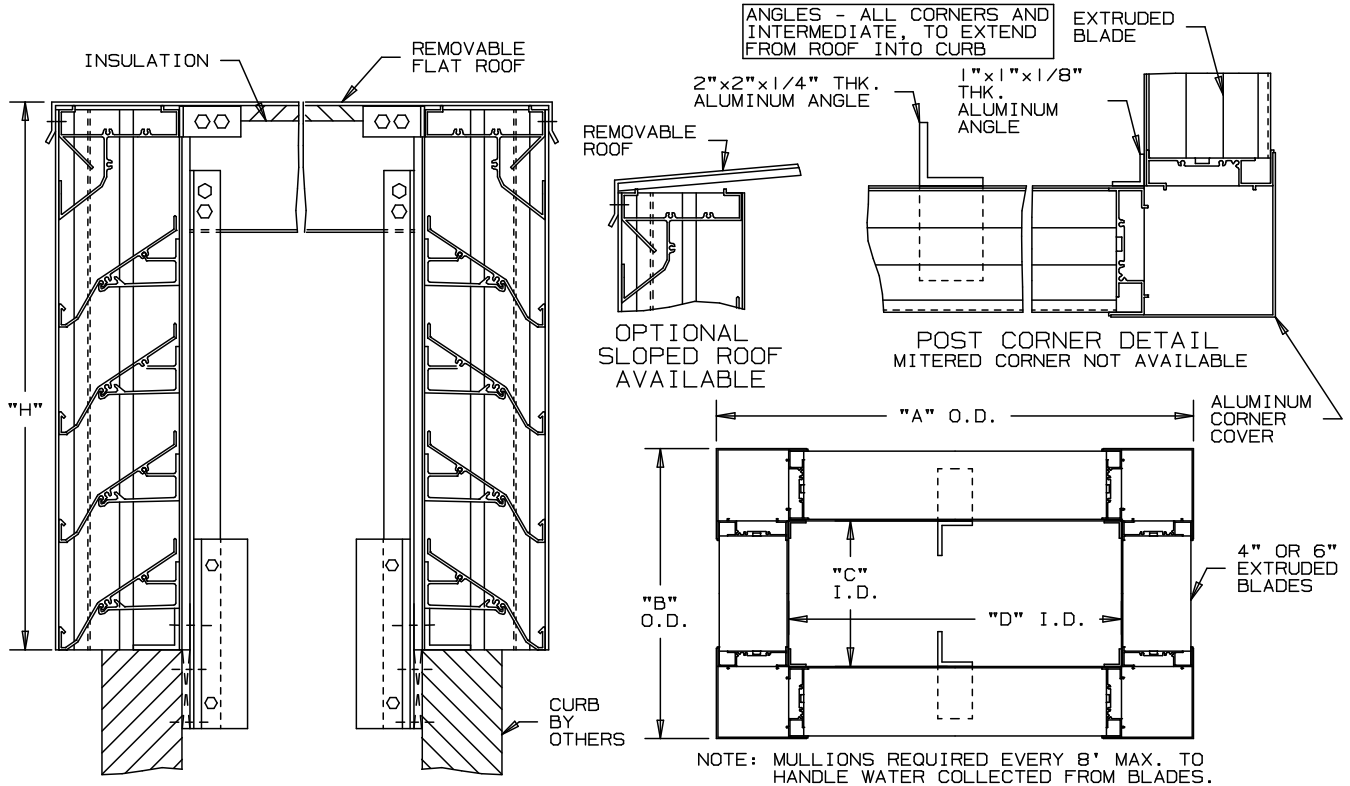


# ARROW

## LOUVERED PENTHOUSES EXTRUDED ALUMINUM 4" AND 6" DEEP BLADES

### INTERIOR FASTENING INSTALLATION POST CORNER - 4" OR 6" BLADE WIDTH DRAINABLE - STATIONARY



4" DEEP	6" DEEP
SPH-35-F "DRAIN" BLADE	SPH-35-F-6 DRAIN BLADE

### SPECIFICATIONS


MATERIAL: EXTRUDED ALUMINUM SECTIONS OF ( ) .081", ( ) .125" THICKNESS OF 6063-T52/T6 ALLOY. WITH REINFORCING RIB BOSSES.

ROOF: REMOVABLE ROOF .060" THK. SHEET ALUMINUM REINFORCED WITH ALUMINUM BRACING WHERE REQUIRED TO TAKE A SNOW LOAD OF 40 LBS./SQ.FT. PLUS A REQUIRED SAFETY FACTOR.

INSULATION: UNDERSIDE OF ROOF IS LINED WITH 1/2" THK. INSULATION.

SCREENS: (WHEN INDICATED)  
BIRD SCREEN - 1/2" SQUARE MESH, 19 GA. GALVANIZED STEEL, ON INTERIOR.

NOTE: PENTHOUSE DIMENSIONS "A" OR "B" EXCEEDING 84" SHALL BE SHIPPED IN SECTIONS FOR FIELD ASSEMBLY BY OTHERS.

												 UNION MADE
ITEM	QTY.	"A"	"B"	"C"	"D"	"H"	MULL	TYPE	LOC			
								SCREENS				

**ARROW UNITED INDUSTRIES**  
 A DIVISION OF MESTEK, INC.  
 450 RIVERSIDE DRIVE  
 WYALUSING, PA 18853  
 TEL: (570) 746-1888 FAX: (570) 746-9286  
 WEB ADDRESS: WWW.ARROWUNITED.COM

ARCH./ENG.:	
CONTR.:	
PROJECT:	
EDR:	ECN: JOB:
DATE:	DWN.: DWG.:

AGENT: \_\_\_\_\_