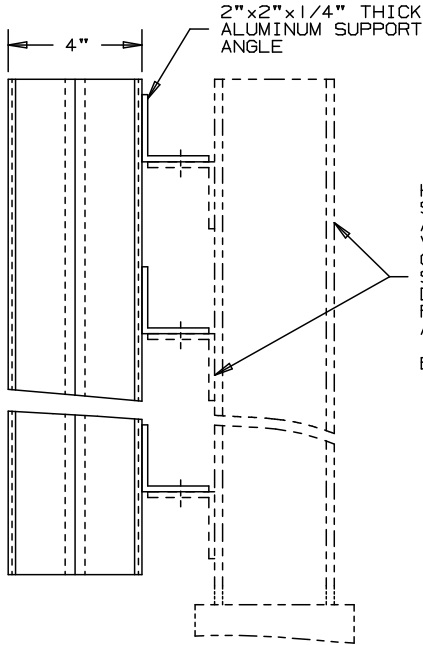


ARROW

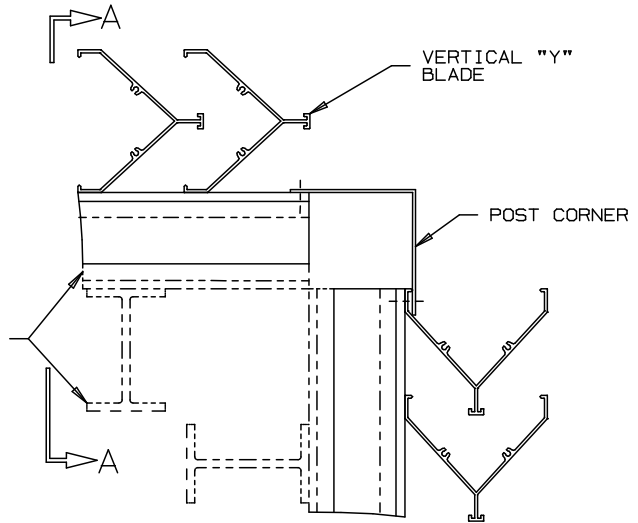
EXTRUDED ALUMINUM LOUVERS EQUIPMENT SCREEN

TYPE ESV-28

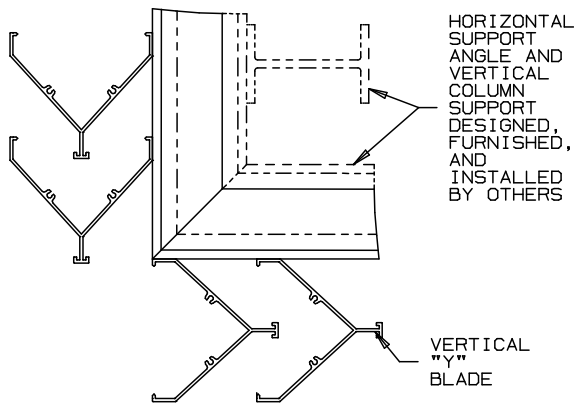


SECTION A-A
NOT TO SCALE

HORIZONTAL SUPPORT ANGLE AND VERTICAL COLUMN SUPPORT DESIGNED, FURNISHED, AND INSTALLED BY OTHERS



POST CORNER DETAIL



MITERED CORNER DETAIL

SPECIFICATIONS

MATERIAL: EXTRUDED ALUMINUM 6063-T52/T6 ALLOY, .081" THICK (NOMINAL). BLADES SPACED APPROXIMATELY 3" ON CENTER WITH ARCHITECTURAL STYLE HIDDEN MULLIONS.

SUPPORTS: SHALL INCORPORATE REAR ANGLE 2"x2"x1/4" EXTRUDED ALUMINUM TO WITHSTAND WINDLOAD OF 20 PSF, APPROXIMATELY 90 MPH WIND. SPACED ON 60" CENTERS.

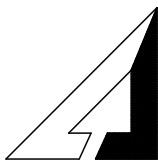
LOUVER SIZE: MAXIMUM PANEL SIZE LIMITED TO 60 S.F. PER SECTION, NOT TO EXCEED 120" WIDE AND 72" HIGH. LOUVER SECTIONS LARGER THAN FACTORY MAXIMUM SIZE WILL REQUIRE FIELD ASSEMBLY OF SMALLER SECTIONS.

SCREEN: NONE REQUIRED.

FINISH: MILL.

VARIATIONS - LOUVER VARIATIONS AVAILABLE AS MITERED CORNER, POST CORNER, HINGED ACCESS, AND CAP COVERS.

ARCHITECTURAL FINISHES: AS KYNAR, BAKED ENAMEL, CLEAR AND COLOR ANODIZE ARE AVAILABLE. CONSULT THE FACTORY.



ARROW UNITED INDUSTRIES
A DIVISION OF MESTEK, INC.

450 RIVERSIDE DRIVE
WYALUSING, PA 18853

TEL: (570) 746-1888 FAX: (570) 746-9286
WEB ADDRESS: WWW.ARROWUNITED.COM

AGENT: _____

ARCH./ENG.:

CONTR.:

PROJECT:

EDR:

ECN:

JOB:

DATE:

DWN.:

DWG.: