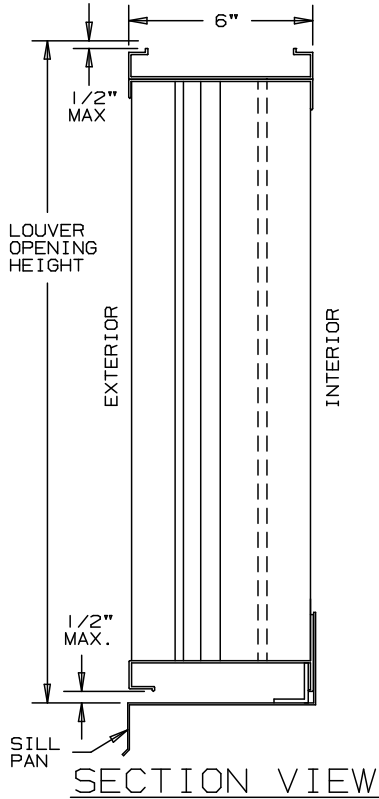


ARROW

EXTRUDED ALUMINUM LOUVERS
VERTICAL SIGHTPROOF BLADES
STATIONARY, 6" DEEP

MODEL EAV-66

DADE COUNTY APPROVED TO PRESSURES UP TO ±150 PSF



MODEL EAV-66
STANDARD SPECIFICATION

FRAME: 6" DEEP EXTRUDED ALUMINUM ALLOY; HEAD AND SILL
.125 6063-T6; JAMBS .080 6063-T5

BLADES: .081" THICK 6063-T6 EXTRUDED ALUMINUM ALLOY

SILL PAN: .060 THICK FORMED ALUMINUM

FINISH: MILL

SCREEN: 1/2" REMOVABLE ALUMINUM BIRD SCREEN, LOCATED ON
INTERIOR

MIN. PANEL SIZE: 18" WIDE x 18" HIGH

MAX. PANEL SIZE: PANEL WIDTH NOT TO EXCEED 96", PANEL HEIGHT
NOT TO EXCEED 96", PANEL SQUARE FOOTAGE NOT
TO EXCEED 32 SQ. FT. UNLIMITED ASSEMBLY
WIDTH UTILIZING STD. VISIBLE OR OPTIONAL
CONCEALED MULLIONS, ASSEMBLY HEIGHT LIMITED
TO A SINGLE PANEL. CONSULT FACTORY
FOR OPENINGS GREATER THAN 96" HIGH.

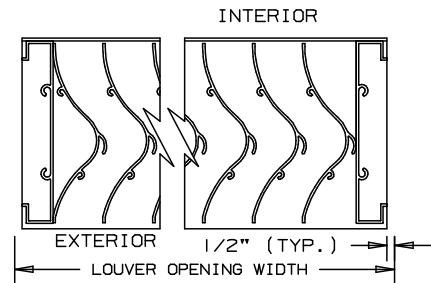
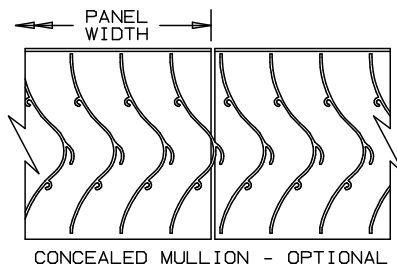
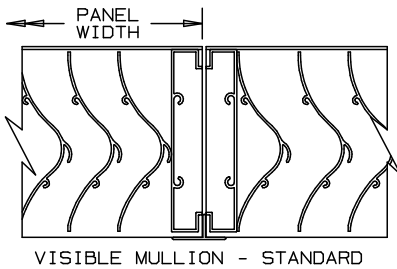
DIMENSIONS: "A" (WIDTH) AND "B" (HEIGHT) ARE OPENING SIZES;
LOUVERS ARE MADE 1" UNDERSIZED.

TESTING: IN ACCORDANCE WITH DADE COUNTY TEST PROTOCOLS
TAS-201, TAS-202, AND TAS-203 FOR STRUCTURAL
INTEGRITY. IN ACCORDANCE WITH (TAS)-100(A)-95
FOR HIGH-VELOCITY HURRICANE ZONES

SUBSTRATES: QUALIFIED SUBSTRATES ARE STEEL, 3,000-PSI
CONCRETE, OR SOUTHERN PINE

RATINGS: LOUVERS ARE QUALIFIED FOR "ENHANCED PROTECTION"
FOR ESSENTIAL FACILITIES APPLICATIONS VIA THE
SUCCESSFUL TESTING OF THE LARGE MISSILE IMPACT
TEST (AT 80 F/S) AND CYCLIC LOAD TESTS AS
SPECIFIED BY ASTM 1886/1996.

DADE COUNTY NOA NO.: 06-1211.03



PLAN VIEWS

ITEM	QTY.	WIDTH	HEIGHT	WIDTH	HEIGHT	MULL	TYPE	LOC	SCREENS	
		OPENING SIZE		LOUVER SIZE						

ARROW UNITED INDUSTRIES
A DIVISION OF MESTEK, INC.
314 RIVERSIDE DRIVE
WYALUSING, PA 18853
TEL: (570) 746-1888 FAX: (570) 746-9286

AGENT: _____

ARCH./ENG.:		
CONTR.:		
PROJECT:		
EDR:	ECN:	JOB:
DATE:	DWN.:	DWG.:

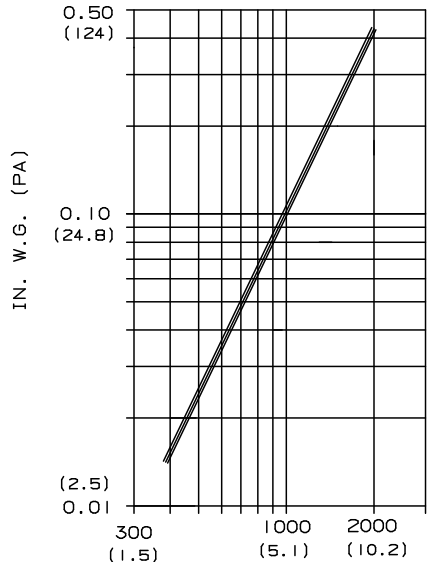
PRESSURE DROP : 0.164 IN WG (40.6 PA.) AT 1250 FPM (6.35 M/S)
AND 9813 SCFM (4.63 SCM/S)

FREE AREA : 7.85 SQ FT (0.729 SQ M)=49.1% FOR 48"x48" (1.22Mx1.22M) TEST SIZE

MISSILE IMPACT : "ENHANCED PROTECTION" RATED AT 55 MPH (80 M/S) PER ASTM 1886/1996

PERFORMANCE DATA

INTAKE PRESSURE DROP



FREE AREA IN SQUARE FEET (SQ METERS)

		WIDTH							
		IN. mm	18" 457	24" 610	36" 914	48" 1219	60" 1524	72" 1829	84" 2134
HEIGHT	18" 457	0.88 0.082	1.22 0.113	1.95 0.181	2.64 0.245	3.38 0.314	4.11 0.381	4.80 0.446	5.55 0.516
	24" 610	1.23 0.114	1.59 0.148	2.61 0.242	3.63 0.337	4.55 0.423	5.56 0.517	6.48 0.602	7.50 0.697
	36" 914	1.93 0.179	2.52 0.234	4.13 0.384	5.74 0.533	7.19 0.668	8.80 0.818	10.25 0.952	11.86 1.102
	48" 1219	2.63 0.244	3.44 0.320	5.65 0.525	7.85 0.729	9.83 0.913	12.04 1.119	14.02 1.303	16.22 1.507
	60" 1524	3.33 0.309	4.37 0.406	7.16 0.665	9.96 0.925	12.48 1.159	15.27 1.419	17.79 1.653	20.59 1.913
	72" 1829	4.03 0.374	5.30 0.492	8.68 0.806	12.07 1.121	15.12 1.405	18.51 1.720	21.56 2.003	24.95 2.318
	84" 2134	4.73 0.439	6.22 0.578	10.20 0.948	14.18 1.317	17.77 1.651	21.75 2.021	25.33 2.353	29.31 2.723
	96" 2438	5.43 0.504	7.15 0.664	11.72 1.089	16.29 1.513	20.41 1.896	24.98 2.321	29.11 2.704	33.68 3.129

VELOCITY THROUGH FREE AREA fpm (m/s)

STANDARD AIR- .075 LBS PER CU FT.
RATINGS DO NOT INCLUDE THE EFFECT OF A WIRE BIRD SCREEN
TEST BASED ON A 48"x48" TEST SIZE PER AMCA STANDARD 511

WIND-DRIVEN RAIN PENETRATION CLASSES:		DISCHARGE LOSS COEFFICIENT CLASSES:	
CLASS	EFFECTIVENESS	CLASS	COEFFICIENT
A	100% TO 99%	1	0.4 & ABOVE
B	98.9% TO 95%	2	0.3 TO 0.399
C	94.9% TO 80%	3	0.2 TO 0.299
D	BELOW 80%	4	0.199 & BELOW

WIND DRIVEN RAIN PERFORMANCE 29 MPH (46.7 KPH) WITH 3 IN/H (76 MM/H)

WIND VELOCITY MPH (KPH)	RAINFALL RATE IN/H (MM/H)	CORE VELOCITY FPM (M/S)	VENTILATION AIRFLOW CFM (CM/MIN)	FREE AREA VELOCITY FPM (M/S)	EFFECTIVENESS RATIO PERCENTAGE	WATER PENETRATION CLASS	COEFFICIENT OF DISCHARGE CLASS
29 (46.4)	3 (76)	980 (5)	10546 (299)	2170 (11)	100.0%	CLASS A	CLASS I

WIND DRIVEN RAIN PERFORMANCE 50 MPH (80.5 KPH) WITH 8 IN/H (203 MM/H)

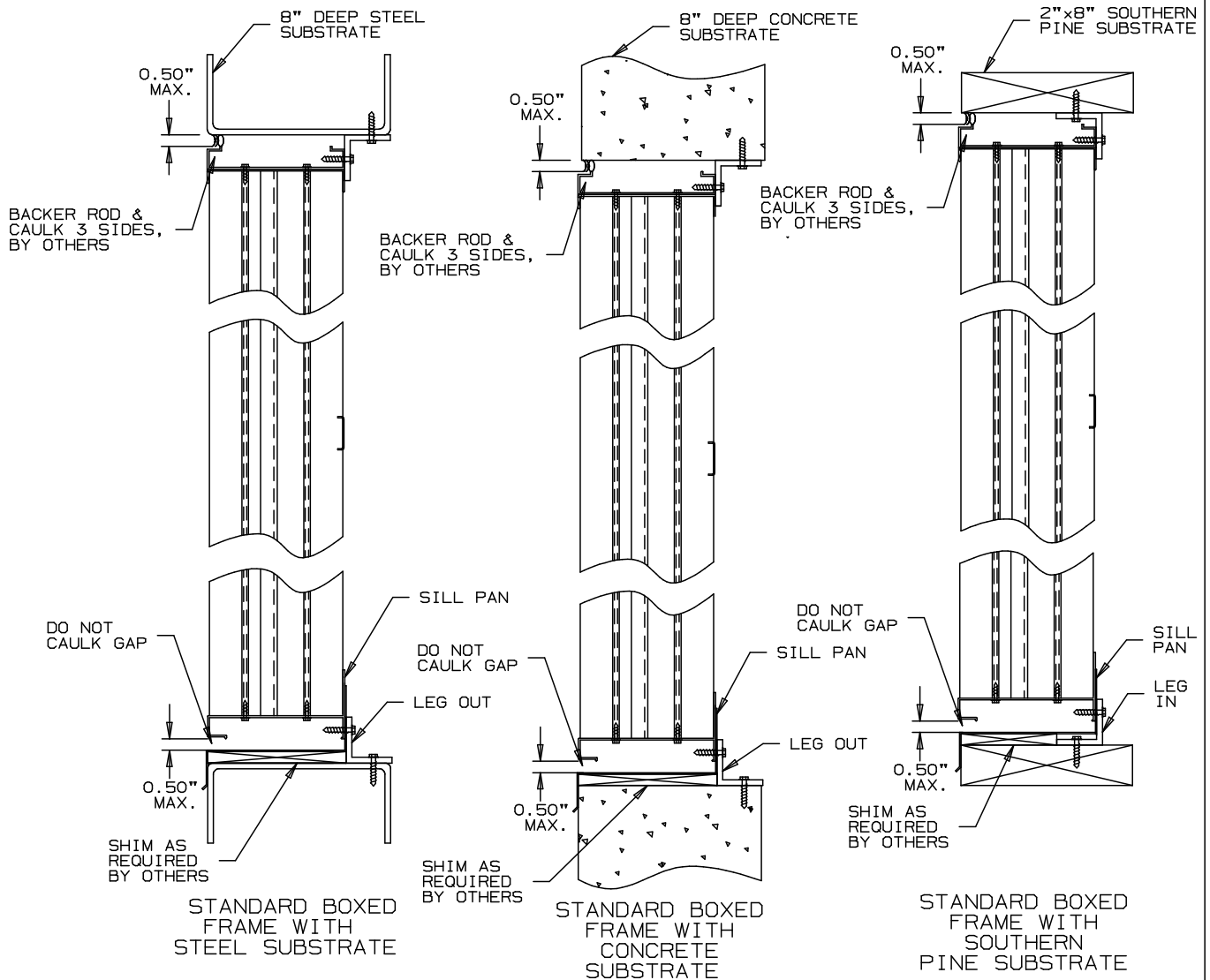
WIND VELOCITY MPH (KPH)	RAINFALL RATE IN/H (MM/H)	CORE VELOCITY FPM (M/S)	VENTILATION AIRFLOW CFM (CM/MIN)	FREE AREA VELOCITY FPM (M/S)	EFFECTIVENESS RATIO PERCENTAGE	WATER PENETRATION CLASS	COEFFICIENT OF DISCHARGE CLASS
50 (80.5)	8 (203)	784 (4)	8440 (239)	1736 (8.8)	99.2%	CLASS A	CLASS I
50 (80.5)	8 (203)	877 (4.5)	9445 (267)	1943 (9.9)	99.1%	CLASS A	CLASS I
50 (80.5)	8 (203)	982 (5)	10578 (300)	2176 (11)	99.1%	CLASS A	CLASS I



ARROW UNITED INDUSTRIES CERTIFIES THAT THE MODEL EAV-66 LOUVER SHOWN HEREIN IS LICENSED TO BEAR THE AMCA SEAL. THE RATINGS SHOWN ARE BASED ON TESTS AND PROCEDURES PERFORMED IN ACCORDANCE WITH AMCA PUBLICATION 511 AND COMPLY WITH THE REQUIREMENTS OF THE AMCA CERTIFIED RATINGS PROGRAM. THE AMCA CERTIFIED RATINGS SEAL APPLIES TO AIR PERFORMANCE AND WIND DRIVEN RAIN ONLY.

WIND DRIVEN RAIN PERFORMANCE TESTS BASED ON 1Mx1M CORE AREA (39.37"x39.37") LOUVER WITH 5.88 FT² (0.546 M²) FREE AREA

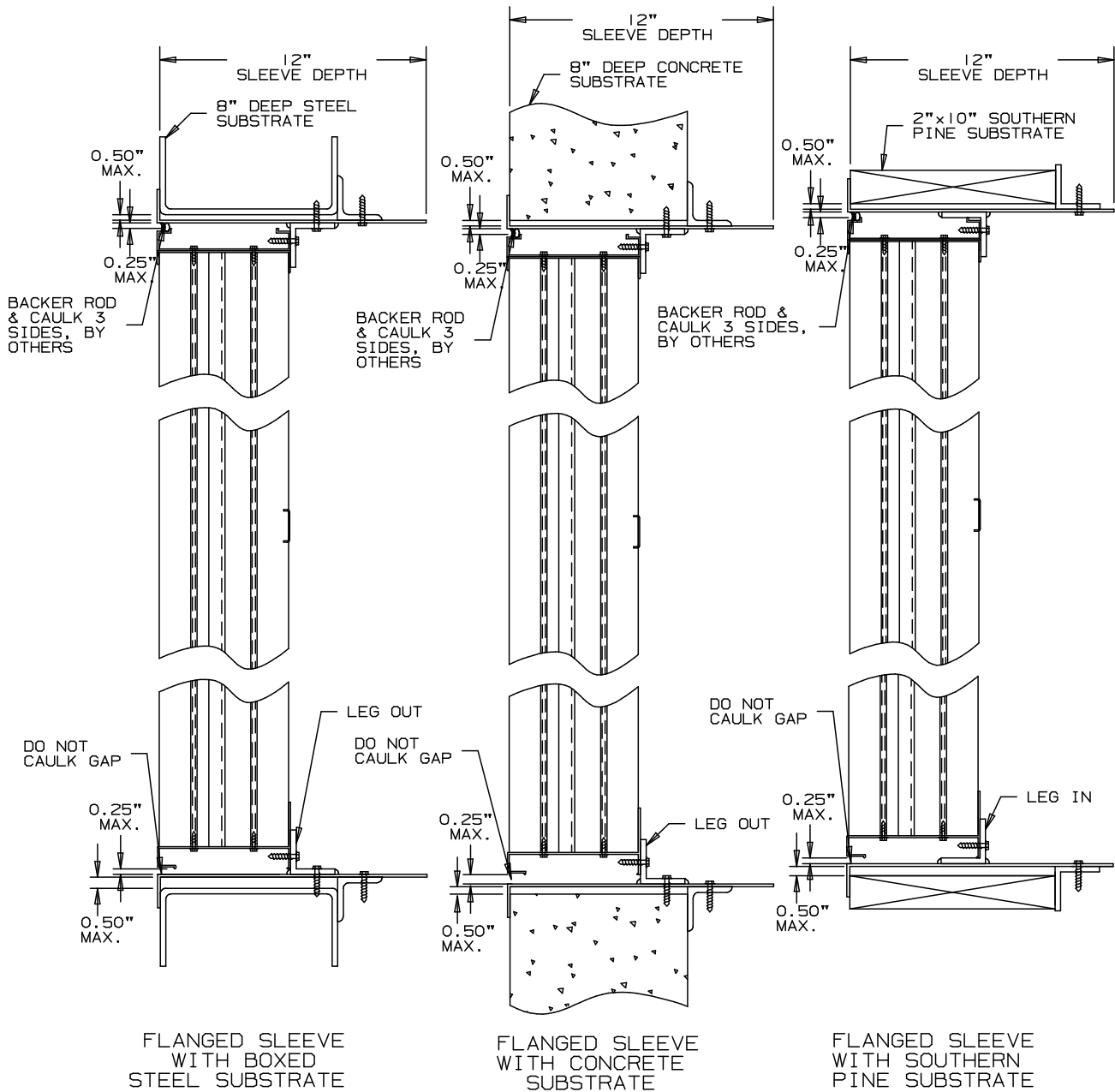
BOXED FRAME INSTALLATION INSTRUCTIONS



NOTES:

1. MOUNTING ANGLES CAN BE INSTALLED WITH "LEGS IN" OR "LEGS OUT" FOR ANY APPROVED SUBSTRATE.
2. "LEGS OUT" IS THE STANDARD CONSTRUCTION, "LEGS IN" IS OPTIONAL
3. THE FLANGED SLEEVE OPTION CAN BE USED WITH ANY APPROVED SUBSTRATE.
4. USE SHIMS TO OBTAIN UNIFORM CLEARANCE BETWEEN THE LOUVER AND THE LOUVER OPENING ON ALL SIDES, SHIMS ARE BY OTHERS.
5. SEALANT BETWEEN FLANGED ANGLE SLEEVE AND THE SUBSTRATE BY INSTALLER.
6. TWO MOUNTING ANGLES RUN THE FULL WIDTH OF LOUVER.
7. SEE DADE COUNTY NOA 06-1211.03 FOR INSTALLATION DETAILS.

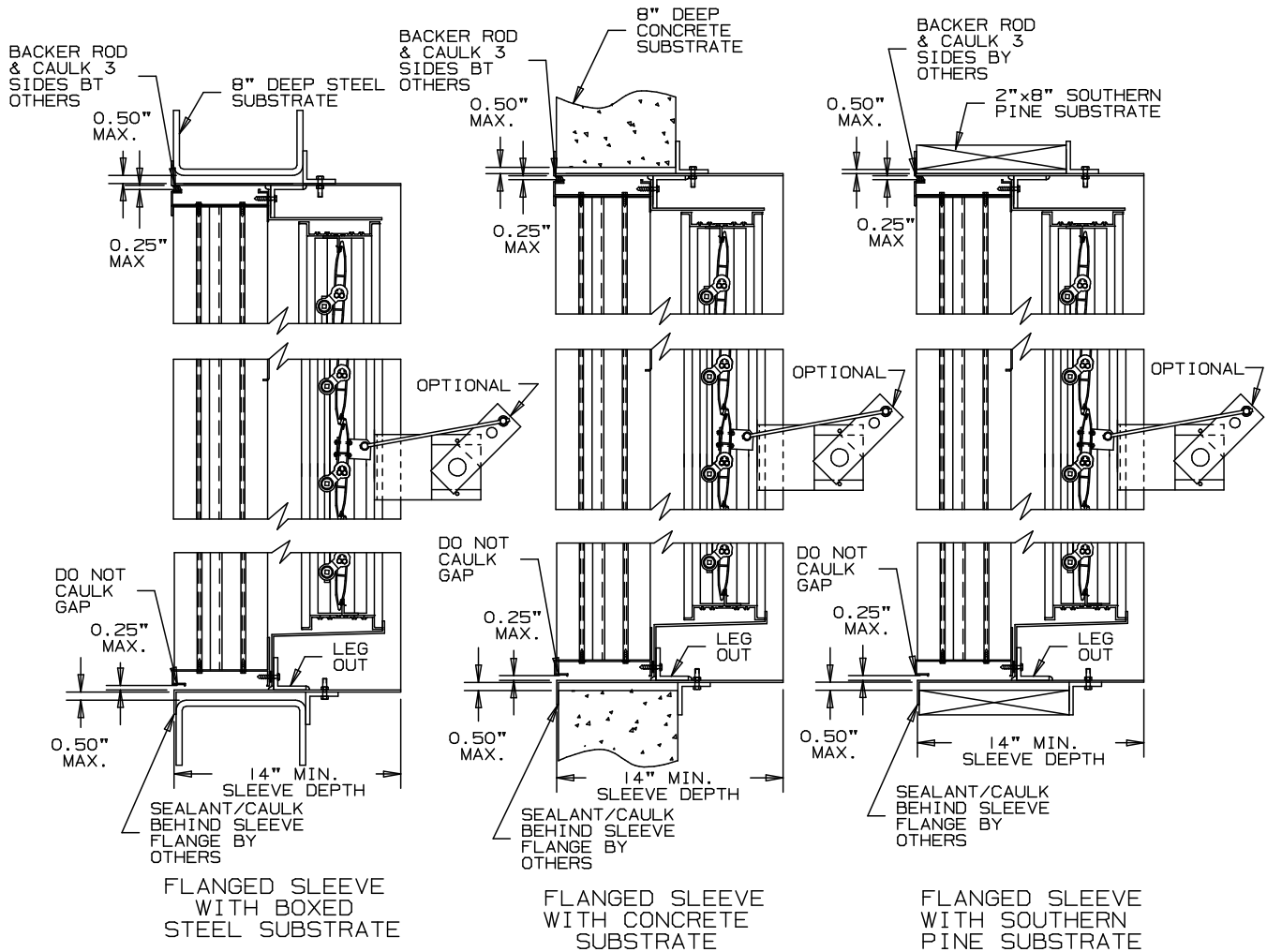
FLANGED SLEEVE INSTALLATION INSTRUCTIONS



NOTES:

1. MOUNTING ANGLES CAN BE INSTALLED WITH "LEGS IN" OR "LEGS OUT" FOR ANY APPROVED SUBSTRATE.
2. "LEGS OUT" IS THE STANDARD CONSTRUCTION, "LEGS IN" IS OPTIONAL
3. THE FLANGED SLEEVE OPTION CAN BE USED WITH ANY APPROVED SUBSTRATE.
4. USE SHIMS TO OBTAIN UNIFORM CLEARANCE BETWEEN THE LOUVER AND THE LOUVER OPENING ON ALL SIDES, SHIMS ARE BY OTHERS.
5. SEALANT BETWEEN FLANGED ANGLE SLEEVE AND THE SUBSTRATE BY INSTALLER.
6. TWO MOUNTING ANGLES RUN THE FULL WIDTH OF LOUVER.
7. SEE DADE COUNTY NOA 06-1211.03 FOR INSTALLATION DETAILS.

FLANGED SLEEVE INSTALLATION INSTRUCTIONS FOR TAS-100 APPROVED EAV-66 LOUVER / DAMPER



NOTES:

1. THE FLANGED SLEEVE OPTION CAN BE USED WITH ANY APPROVED SUBSTRATE.
2. USE SHIMS TO OBTAIN UNIFORM CLEARANCE BETWEEN THE LOUVER AND THE LOUVER OPENING ON ALL SIDES, SHIMS ARE BY OTHERS.
3. SEALANT BETWEEN FLANGED ANGLE SLEEVE AND THE SUBSTRATE BY INSTALLER.
4. TWO MOUNTING ANGLES RUN THE FULL WIDTH OF LOUVER.
5. SEE DADE COUNTY NOA 06-1211.03 FOR INSTALLATION DETAILS.