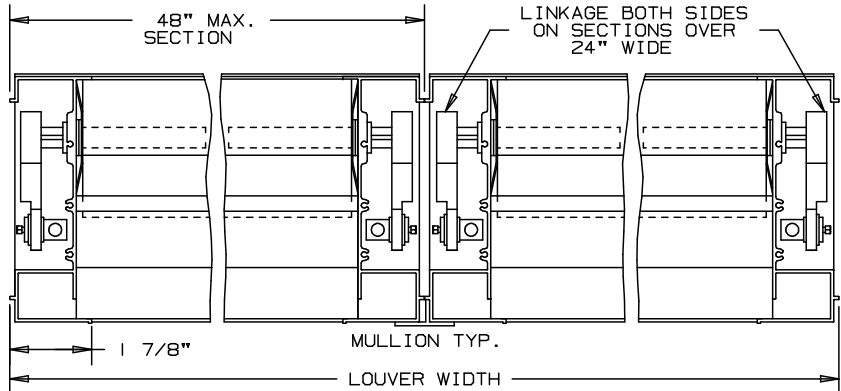
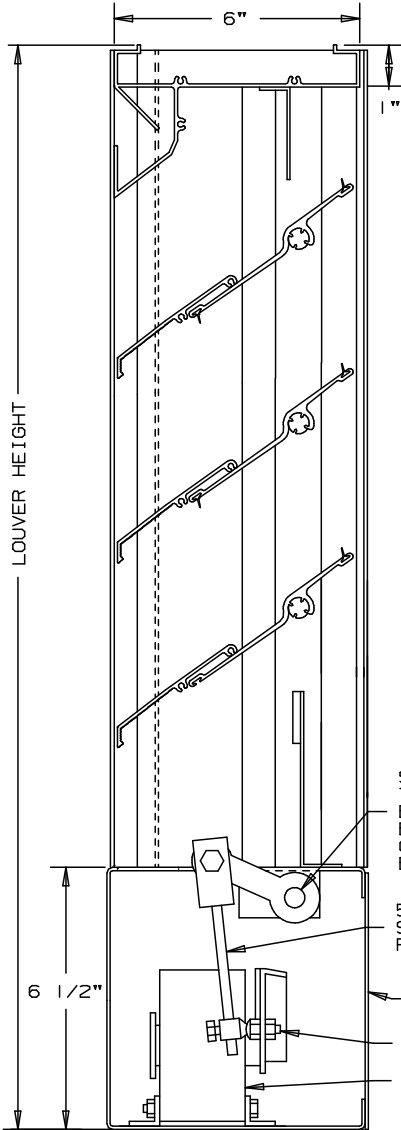


ARROW

EXTRUDED ALUMINUM LOUVERS
COMBINATION ADJUSTABLE AND
STATIONARY, 6" DEEP

TYPE EA-681-D-M

35° STRAIGHT STATIONARY BLADE - CONCEALED ACTUATOR



SPECIFICATIONS
 BEARINGS: CELCON BEARING MATERIAL SO THAT THERE WILL BE NO METAL TO METAL FRICTION. OPERATING LINKAGE CONCEALED IN FRAME, OUT OF THE AIR STREAM.
 FRAME AND STATIONARY BLADE: EXTRUDED ALUMINUM 6063-T6/T52 ALLOY, FRAME IS .080" THK., BLADE IS .080" THK. ON 4 1/2" CENTERS.
 ADJUSTABLE BLADE: EXTRUDED ALUMINUM 6063-T6/T52 ALLOY, .125" THK.
 FACE OF LOUVER: FULL WIDTH SILL WITH HEAD AND BLADES CONTAINED WITHIN THE JAMBS.
 LINKAGE: EXTRUDED ALUMINUM, CONCEALED IN CHANNEL OUT OF AIRSTREAM. PIVOTS ARE .050" DIA. MACHINED STEEL, CADMIUM PLATED AND CHROMATE TREATED. PIVOTS ROTATE IN A CELCON BEARING. A .312" DIA. ALUMINUM LINKAGE ROD IS LOCKED TO THE PIVOT BY A 1/4-20 SET SCREW WITH AN EPOXY LOCKING PATCH.
 SHAFTS: .50" DIA. ALUMINUM "PIN-LOCK" ROD.
 SEALS: EXTRUDED SILICONE RUBBER SEAL AT BLADE EDGE. STAINLESS STEEL AT JAMB.
 SCREENS: WHEN INDICATED, IN A REMOVABLE FRAME.
 BIRD SCREEN - 1/2" FLATTENED ALUMINUM, .051" THK.
 OR - 1/2" SQ. MESH, INTERMEDIATE DOUBLE-CRIMPED ALUMINUM WIRE, .063 DIA.
 OR - 18/16 MESH, .011" DIA. ALUMINUM WIRE, INSECT SCREEN.
 FINISH: MILL.
 ACTUATOR: 120 VAC, SPRING RETURN NORMALLY CLOSED
 135 IN.-LBS. TORQUE
 LOUVER SIZES: 12" x 19" MINIMUM PANEL SIZE.
 48" x 96" MAXIMUM PANEL SIZE.

- OPTIONAL**
- OTHER SCREENS
 - ARCHITECTURAL FINISHES

NOT TO SCALE

NOMINAL DEDUCTIONS WILL BE MADE TO THE OPENING SIZE GIVEN.

ITEM	QTY.	OPENING SIZE		LOUVER SIZE		MULL	SCREENS	
		WIDTH	HEIGHT	WIDTH	HEIGHT		TYPE	LOC



ARROW UNITED INDUSTRIES
 A DIVISION OF MESTEK, INC.
 450 RIVERSIDE DRIVE
 WYALUSING, PA 18853
 TEL: (570) 746-1888 FAX: (570) 746-9286
 WEB ADDRESS: WWW.ARROWUNITED.COM

AGENT: _____

ARCH./ENG. :
 CONTR. :
 PROJECT :
 EDR: ECN: JOB:
 DATE: DWN. : DWG. :