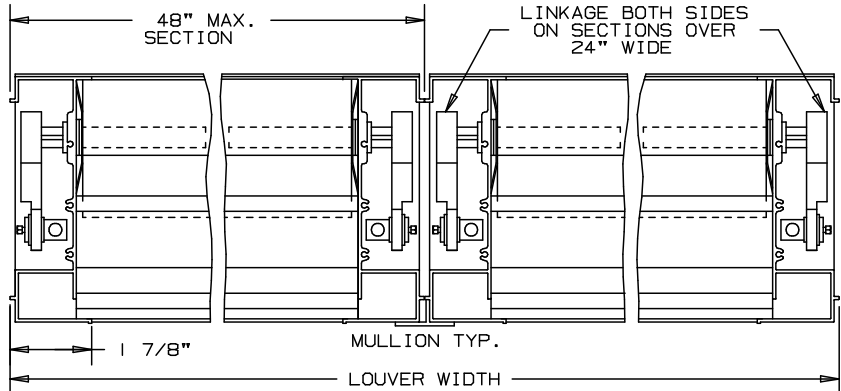
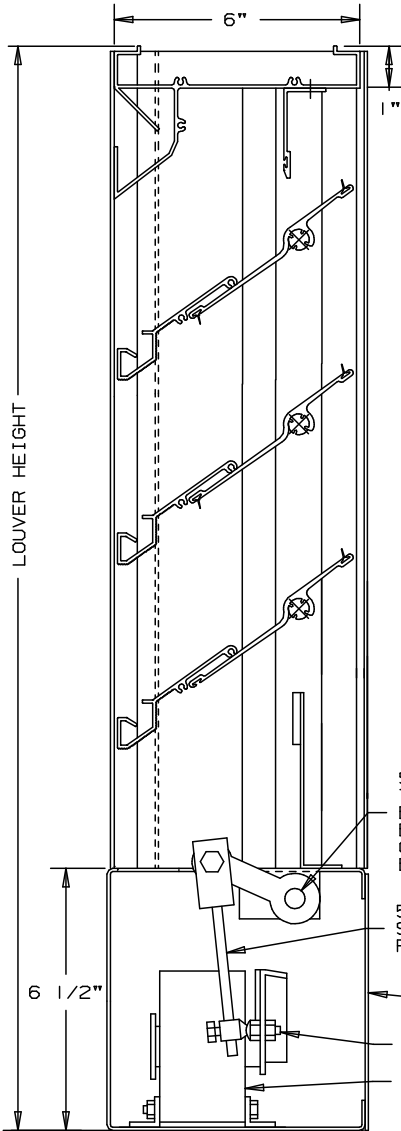


ARROW

EXTRUDED ALUMINUM LOUVERS
COMBINATION ADJUSTABLE AND
STATIONARY DRAIN, 6" DEEP

TYPE EA-680-D-M

DRAIN LOUVER - 35° STATIONARY BLADES - CONCEALED ACTUATOR



SPECIFICATIONS

FRAME AND STATIONARY BLADE: EXTRUDED ALUMINUM 6063-T6/T52 ALLOY, FRAME IS .080" THK., BLADE IS .080" THK. ON 4 1/2" CENTERS.
ADJUSTABLE BLADE: EXTRUDED ALUMINUM 6063-T6/T52 ALLOY, .125" THK.
FACE OF LOUVER: FULL WIDTH SILL WITH HEAD AND BLADES CONTAINED WITHIN THE JAMBS.
LINKAGE: EXTRUDED ALUMINUM, CONCEALED IN CHANNEL OUT OF AIRSTREAM. THE TRUNNIONS, WHICH ROTATE IN CELCON BEARINGS, ARE 1/2" DIAMETER CADMIUM PLATED AND CHROMATE TREATED MACHINED STEEL. THE TRUNNION IS LOCKED TO THE 5/16" DIA. ALUMINUM LINKAGE ROD BY A 1/4-20 SET SCREW WITH AN EPOXY LOCKING PATCH.
SHAFTS: 1/2" DIA. ALUMINUM "PIN-LOCK" EXTRUSION.
SEALS: EXTRUDED SILICONE RUBBER SEAL AT BLADE EDGE. FOAM ON BOTTOM BLADE & STAINLESS STEEL AT JAMB.
SCREENS: WHEN INDICATED, IN A REMOVABLE FRAME.
BIRD SCREEN - 1/2" FLATTENED ALUMINUM, .051" THK.
OR - 1/2" SQ. MESH, INTERMEDIATE DOUBLE-CRIMPED ALUMINUM WIRE, .063 DIA.
OR - 18/16 MESH, .011" DIA. ALUMINUM WIRE, INSECT SCREEN.
FINISH: MILL.
ACTUATOR: 120 VAC, SPRING RETURN NORMALLY CLOSED 133 IN.-LBS. TORQUE
LOUVER SIZES: 12" x 19" MINIMUM PANEL SIZE.
48" x 96" MAXIMUM PANEL SIZE.

1/2" DIA. STEEL TORSION BAR WITH BRONZE OILITE BEARINGS

5/16" DIA. STEEL DRIVE ROD

REMOVABLE ALUMINUM COVER PLATE

BALL SWIVEL

ELECTRIC ACTUATOR

FORMED ALUMINUM SILL (.081")

NOT TO SCALE

OPTIONAL

- * OTHER SCREENS
- * ARCHITECTURAL FINISHES

NOMINAL DEDUCTIONS WILL BE MADE TO THE OPENING SIZE GIVEN.

ITEM	QTY.	OPENING SIZE		LOUVER SIZE		MULL	TYPE	LOC	SCREENS	 UNION MADE
		WIDTH	HEIGHT	WIDTH	HEIGHT					

ARROW UNITED INDUSTRIES
A DIVISION OF MESTEK, INC.
450 RIVERSIDE DRIVE
WYALUSING, PA 18853
TEL: (570) 746-1888 FAX: (570) 746-9286
WEB ADDRESS: WWW.ARROWUNITED.COM

AGENT: _____

ARCH./ENG.:
CONTR.:
PROJECT:
EDR: ECN: JOB:
DATE: DWN.: DWG.: