

# ARROW

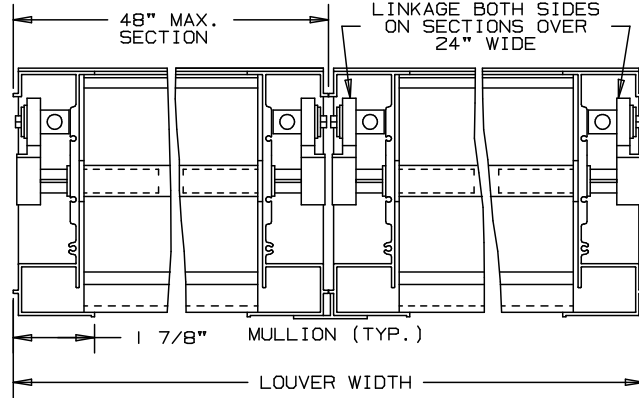
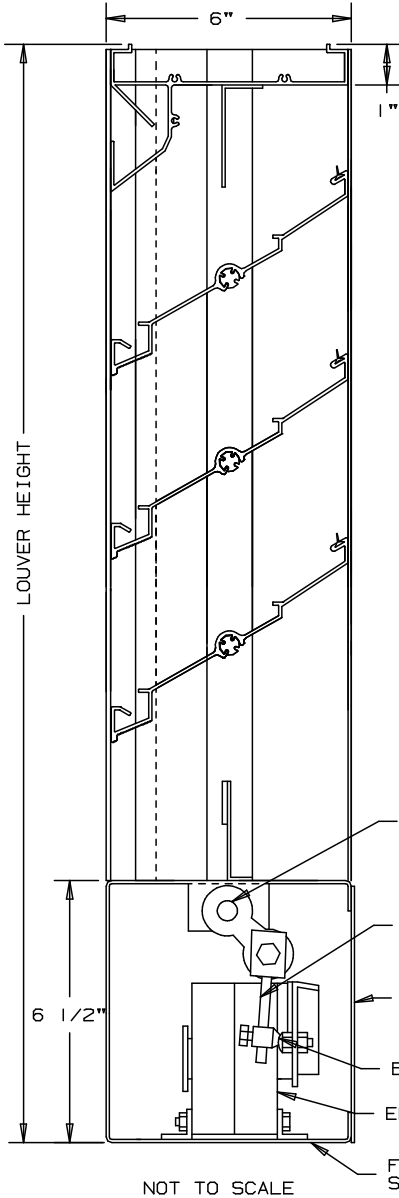
## EXTRUDED ALUMINUM LOUVERS

### ADJUSTABLE TYPE 6" DEEP

# TYPE

## EA-651-D-M

### DRAIN BLADE - CONCEALED ACTUATOR



### SPECIFICATIONS

BEARINGS: CELCON BEARING MATERIAL SO THAT THERE WILL BE NO METAL TO METAL FRICTION. OPERATING LINKAGE CONCEALED IN FRAME, OUT OF THE AIR STREAM.

MATERIAL: FRAME AND BLADE EXTRUDED ALUMINUM 6063-T6/T52 ALLOY .080" THK., BLADES ON 4 1/2" CENTERS.

FACE OF LOUVER: FULL WIDTH SILL WITH DRAIN HEAD AND DRAIN BLADES CONTAINED WITHIN THE DRAIN JAMBS.

LINKAGE: EXTRUDED ALUMINUM, CONCEALED IN CHANNEL OUT OF AIRSTREAM. PIVOTS ARE .50" DIA. MACHINED STEEL, CADMIUM PLATED AND CHROMATE TREATED. PIVOTS ROTATE IN A CELCON BEARING. A .312" DIA. ALUMINUM LINKAGE ROD IS LOCKED TO THE PIVOT BY A 1/4-20 SET SCREW WITH AN EPOXY LOCKING PATCH.

SHAFTS: .50" DIA. ALUMINUM "PIN-LOCK" ROD.

SEALS: EXTRUDED SILICONE RUBBER SEAL AT BLADE EDGE. POLYURETHANE AT THE JAMBS.

SCREENS: WHEN INDICATED, IN A REMOVABLE FRAME.  
 BIRD SCREEN - 1/2" FLATTENED ALUMINUM, .051" THK.  
 OR - 1/2" SQ. MESH, INTERMEDIATE DOUBLE-CRIMPED ALUMINUM WIRE, .063 DIA.  
 OR - 18/16 MESH, .011" DIA. ALUMINUM WIRE, INSECT SCREEN.

FINISH: MILL.

ACTUATOR: 120 VAC, SPRING RETURN NORMALLY CLOSED  
 133 IN-LBS. TORQUE.

LOUVER SIZES: 12" x 19" MINIMUM PANEL SIZE.  
 48" x 96" MAXIMUM PANEL SIZE.

### OPTIONAL

- \* OTHER SCREENS
- \* ARCHITECTURAL FINISHES

NOMINAL DEDUCTIONS WILL BE MADE TO THE OPENING SIZES GIVEN.

ITEM	QTY.	WIDTH	HEIGHT	WIDTH	HEIGHT	MULL	TYPE	LOC	SCREENS	 UNION MADE
		OPENING SIZE		LOUVER SIZE						

**ARROW UNITED INDUSTRIES**  
 A DIVISION OF MESTEK, INC.  
 450 RIVERSIDE DRIVE  
 WYALUSING, PA 18853  
 TEL: (570) 746-1888 FAX: (570) 746-9286  
 WEB ADDRESS: WWW.ARROWUNITED.COM

AGENT: \_\_\_\_\_

ARCH./ENG. : \_\_\_\_\_

CONTR. : \_\_\_\_\_

PROJECT: \_\_\_\_\_

EDR: \_\_\_\_\_ ECN: \_\_\_\_\_ JOB: \_\_\_\_\_

DATE: \_\_\_\_\_ DWN. : \_\_\_\_\_ DWG. : \_\_\_\_\_