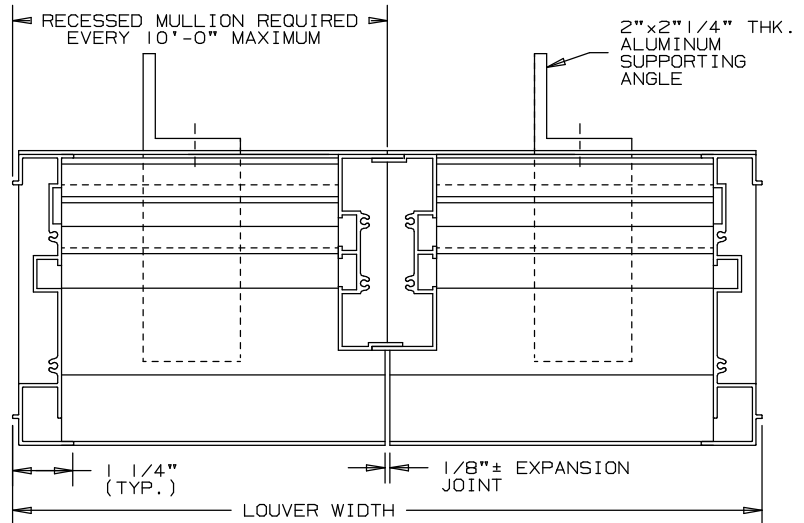
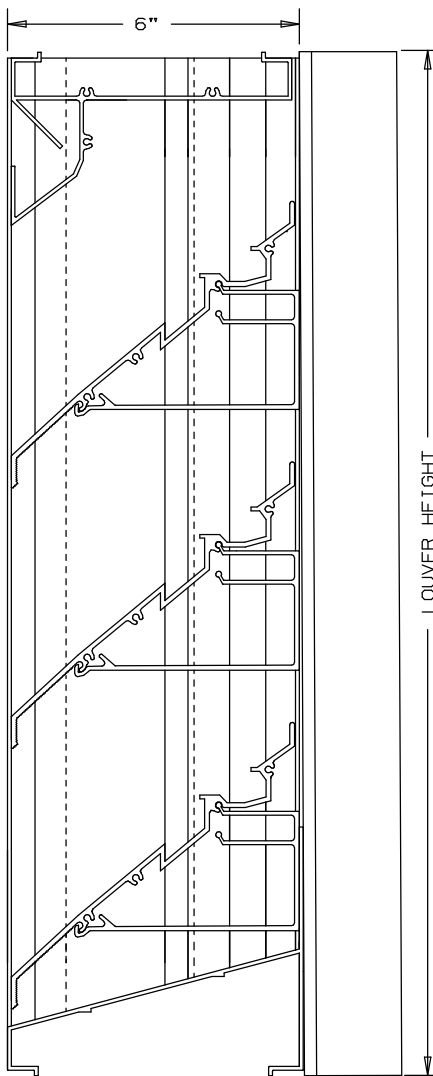


ARROW

EXTRUDED ALUMINUM LOUVERS
6" DEEP - CONTINUOUS LINE
RECESSED MULLION STYLE

TYPE EA-640-DR

DRAIN BLADE-CONTINUOUS LINE-STATIONARY-CHANNEL TYPE



SPECIFICATIONS

MATERIAL: EXTRUDED ALUMINUM 6063-T6/T52 ALLOY
 FRAMES: .081" THK. (NOMINAL)
 BLADES: .125" THK. (NOMINAL)
 FACE OF LOUVER: FULL WIDTH SILL WITH THE HEAD AND BLADES CONTAINED WITHIN JAMBS. BLADE IS 45° ON APPROXIMATE 5 3/8" BLADE CENTERS.
 SCREEN: (WHEN INDICATED, IN A REMOVABLE FRAME)
 BIRD SCREEN - 1/2" FLATTENED ALUMINUM, .051" THK.
 OR - 1/2" SQ. MESH INTERMEDIATE DOUBLE-CRIMPED ALUMINUM WIRE, .063" DIA.
 OR - 18/16 MESH, .011" DIA. ALUMINUM WIRE INSECT SCREEN.

FINISH: _____
 MINIMUM PANEL SIZE: 12" x 12"
 MAXIMUM SINGLE PANEL SIZE: 120" x 60" OR 60" x 120"

LOUVER PERFORMANCE STATEMENT

LOUVER MODEL EA-640-DR SHALL BE FABRICATED TO PROVIDE A MINIMUM OF (53%), 8.40 SQUARE FEET OF FREE AREA FOR A 48" x 48" SIZE LOUVER AND BEAR THE AMCA CERTIFIED RATINGS PROGRAM SEAL FOR AIR PERFORMANCE AND WATER PENETRATION. THE RATINGS SHALL SHOW A BEGINNING POINT OF WATER PENETRATION AT .01 OUNCES PER SQUARE FOOT OF FREE AREA TO BE 1,223 FPM, (10,273) CUBIC FEET PER MINUTE, WITH LESS THAN .10 INCHES WATER GAUGE PRESSURE DROP AT 800 FPM AIR INTAKE.

FLANGE FRAME (AVAILABLE) EITHER SIDE

1 3/8" USABLE FLANGE

FLANGE FRAME OPTION

FOR CERTIFIED RATINGS
 AUTHORIZED BY AMCA
 -SEE REVERSE SIDE

NONINAL DEDUCTIONS WILL BE MADE TO THE OPENING SIZE GIVEN.



ITEM	QTY.	OPENING SIZE		LOUVER SIZE		MULL	SCREENS	
		WIDTH	HEIGHT	WIDTH	HEIGHT		TYPE	LOC

ARROW UNITED INDUSTRIES
 A DIVISION OF MESTEK, INC.
 314 RIVERSIDE DRIVE
 WYALUSING, PA 18853
 TEL: (570) 746-1888 FAX: (570) 746-9286
 AGENT: _____

ARCH./ENG. : _____
 CONTR. : _____
 PROJECT : _____
 EDR: _____ ECN: _____ JOB: _____
 DATE: _____ DWN. : _____ DWG. : _____

LOUVER MODEL EA-640-DR

45° DUAL DRAIN BLADE

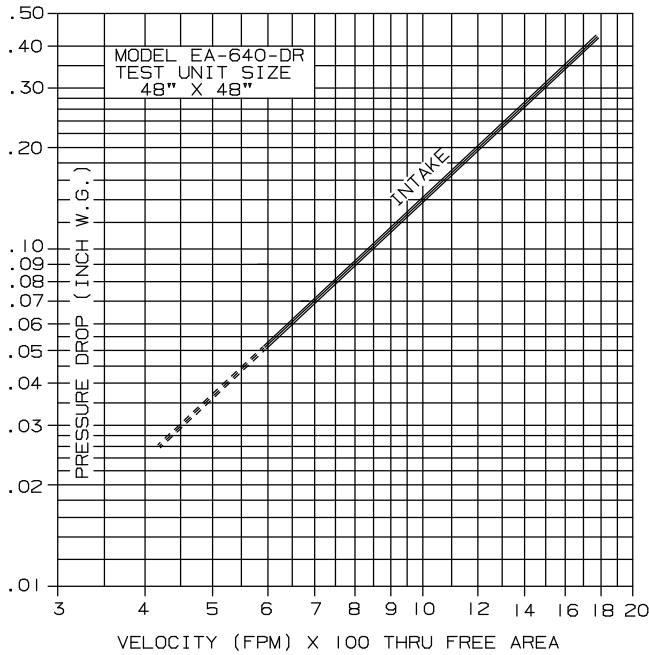
EXTRUDED ALUMINUM - STATIONARY - CONTINUOUS LINE

PERFORMANCE DATA

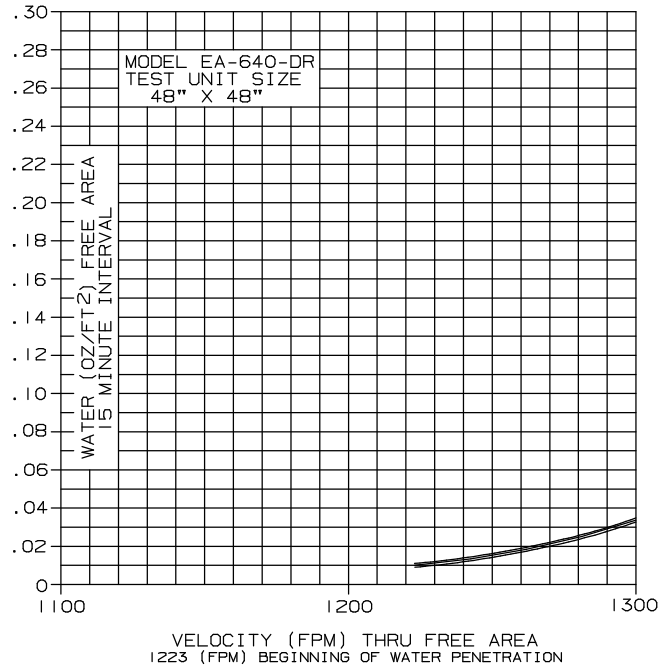
TESTS OF A 48" X 48" SAMPLE ACCORDING TO AMCA STANDARD 500-L SHOWS LOW WATER PENETRATION. TESTS SHOW THE BEGINNING POINT .01 OZ. PER SQUARE FOOT WATER PENETRATION AT 1223 FPM (FREE AREA VELOCITY) WITH LESS THAN .22 INCH W.G. PRESSURE DROP (INTAKE).

RATINGS DO NOT INCLUDE THE EFFECT OF BIRDSCREEN.

PRESSURE DROP



WATER PENETRATION



FREE AREA

HEIGHT	FREE AREA (SQ. FT.)																		
	WIDTH																		
	12"	18"	24"	30"	36"	42"	48"	54"	60"	66"	72"	78"	84"	90"	96"	102"	108"	114"	120"
12"	.23	.38	.52	.67	.81	.96	1.10	1.25	1.39	1.54	1.68	1.83	1.97	2.12	2.26	2.41	2.56	2.70	2.85
24"	.77	1.26	1.75	2.23	2.72	3.21	3.70	4.18	4.67	5.16	5.64	6.13	6.62	7.11	7.59	8.08	8.57	9.06	9.54
36"	1.24	2.02	2.81	3.59	4.37	5.15	5.94	6.72	7.50	8.29	9.07	9.85	10.64	11.42	12.20	12.98	13.77	14.55	15.33
48"	1.78	2.91	4.03	5.16	6.28	7.41	8.40	9.66	10.78	11.91	13.03	14.16	15.28	16.41	17.53	18.66	19.78	20.91	22.03
60"	2.33	3.79	5.26	6.73	8.20	9.67	11.14	12.61	14.08	15.54	17.01	18.48	19.95	21.42	22.89	24.36	25.83	27.29	28.76
72"	2.82	4.60	6.38	8.16	9.94	11.72	13.50	15.28	17.06	18.83	20.61	22.39	24.17	25.95	27.73	29.51	31.29	33.07	34.85
84"	3.30	5.38	7.46	9.54	11.62	13.70	15.78	17.87	19.95	22.03	24.11	26.19	28.27	30.35	32.44	34.52	36.60	38.68	40.76
96"	4.02	6.56	9.11	11.65	14.19	16.73	19.27	21.81	24.35	26.89	29.43	31.97	34.51	37.06	39.60	42.14	44.68	47.22	49.76
108"	4.38	7.14	9.91	12.68	15.44	18.21	20.97	23.74	26.50	29.27	32.04	34.80	37.57	40.33	43.10	45.86	48.63	51.39	54.16
120"	4.88	7.96	11.04	14.13	17.21	20.29	23.37	26.45	29.54	32.62	35.70	38.78	41.87	44.95	48.03	51.11	54.19	57.28	60.36



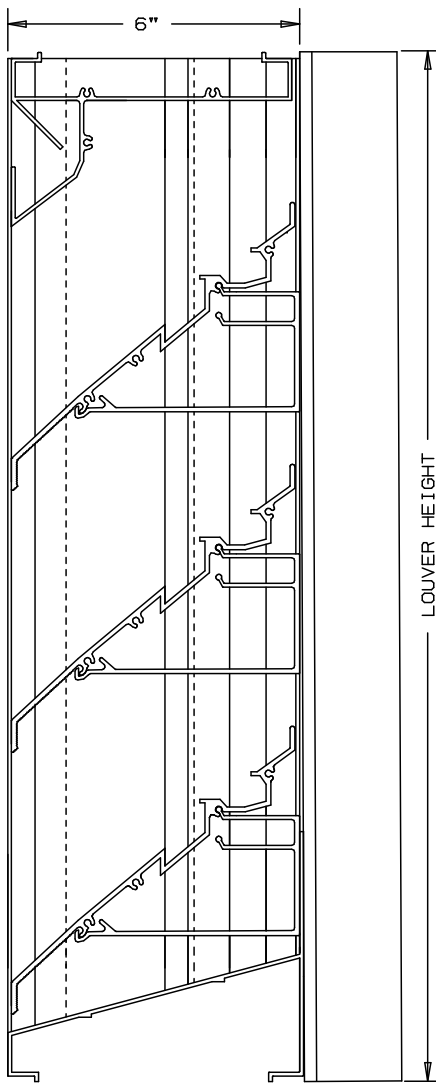
ARROW UNITED CERTIFIES THAT THE MODEL EA-640-DR LOUVERS SHOWN HEREIN IS LICENSED TO BEAR THE AMCA SEAL. THE RATINGS SHOWN ARE BASED ON TESTS AND PROCEDURES PERFORMED IN ACCORDANCE WITH THE AMCA PUBLICATION 511 AND COMPLY WITH THE REQUIREMENTS OF THE AMCA CERTIFIED RATINGS SEAL PROGRAM. THE AMCA CERTIFIED RATINGS SEAL APPLIES TO AIR PERFORMANCE RATINGS AND WATER PENETRATION RATINGS.

ARROW

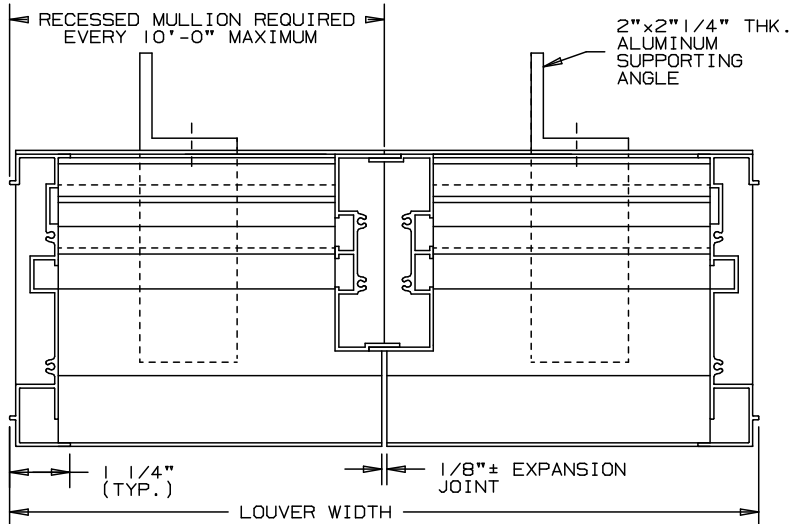
EXTRUDED ALUMINUM LOUVERS
6" DEEP - CONTINUOUS LINE
RECESSED MULLION STYLE

TYPE EA-640-DR

DRAIN BLADE-CONTINUOUS LINE-STATIONARY-CHANNEL TYPE



NOT TO SCALE



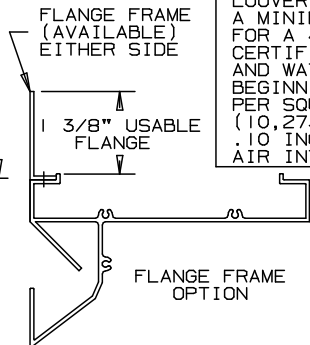
SPECIFICATIONS

MATERIAL: EXTRUDED ALUMINUM 6063-T6/T52 ALLOY
FRAMES: .081" THK. (NOMINAL)
BLADES: .125" THK. (NOMINAL)
FACE OF LOUVER: FULL WIDTH SILL WITH THE HEAD AND
BLADES CONTAINED WITHIN JAMBS. BLADE
IS 45° ON APPROXIMATE 5 3/8" BLADE
CENTERS.
SCREEN: (WHEN INDICATED, IN A REMOVABLE FRAME)
BIRD SCREEN - 1/2" FLATTENED ALUMINUM, .051" THK.
OR - 1/2" SQ. MESH INTERMEDIATE DOUBLE-
CRIMPED ALUMINUM WIRE, .063" DIA.
OR - 18/16 MESH, .011" DIA. ALUMINUM
WIRE INSECT SCREEN.

FINISH: _____
MINIMUM PANEL SIZE: 12" x 12"
MAXIMUM SINGLE PANEL SIZE: 120" x 60" OR 60" x 120"

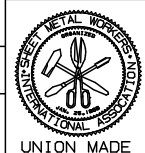
LOUVER PERFORMANCE STATEMENT

LOUVER MODEL EA-640-DR SHALL BE FABRICATED TO PROVIDE
A MINIMUM OF (53%), 8.40 SQUARE FEET OF FREE AREA
FOR A 48" x 48" SIZE LOUVER AND BEAR THE AMCA
CERTIFIED RATINGS PROGRAM SEAL FOR AIR PERFORMANCE
AND WATER PENETRATION. THE RATINGS SHALL SHOW A
BEGINNING POINT OF WATER PENETRATION AT .01 OUNCES
PER SQUARE FOOT OF FREE AREA TO BE 1223 FPM,
(10,273) CUBIC FEET PER MINUTE, WITH LESS THAN
.10 INCHES WATER GAUGE PRESSURE DROP AT 800 FPM
AIR INTAKE.

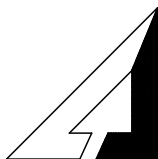


FOR CERTIFIED RATINGS
AUTHORIZED BY AMCA
-SEE REVERSE SIDE

NONINAL DEDUCTIONS WILL BE MADE TO THE OPENING SIZE GIVEN.



ITEM	QTY.	WIDTH	HEIGHT	WIDTH	HEIGHT	MULL	TYPE	LOC
		OPENING SIZE		LOUVER SIZE				



ARROW UNITED INDUSTRIES
A DIVISION OF MESTEK, INC.

450 RIVERSIDE DRIVE
WYALUSING, PA 18853

TEL: (570) 746-1888 FAX: (570) 746-9286
WEB ADDRESS: WWW.ARROWUNITED.COM

AGENT: _____

ARCH./ENG. :

CONTR. :

PROJECT :

EDR: ECN: JOB:

DATE: DWN.: DWG.: