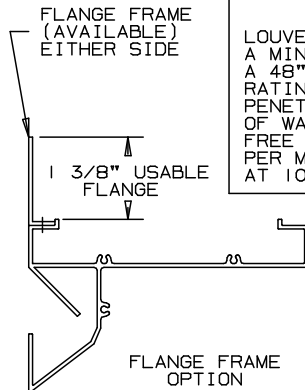
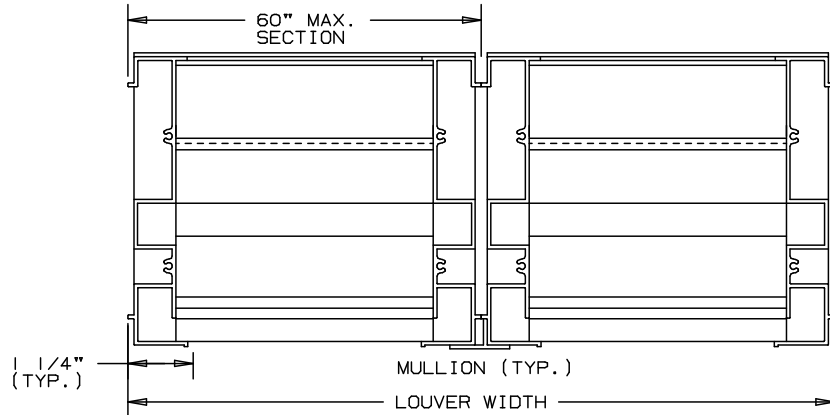
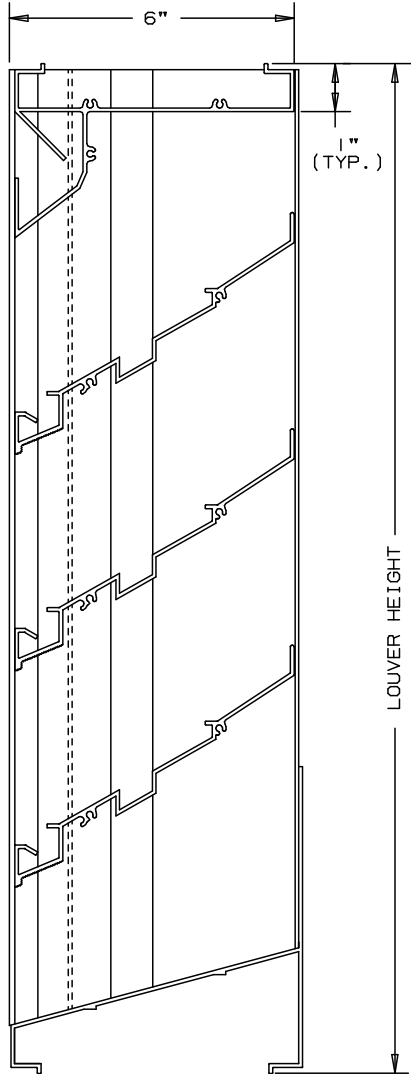


ARROW

EXTRUDED ALUMINUM LOUVERS 6" DEEP

TYPE EA-625-DD

DRAIN BLADE-STATIONARY-CHANNEL TYPE



SPECIFICATIONS

MATERIAL: EXTRUDED ALUMINUM 6063-T6/T52 ALLOY
.125" THK. (NOMINAL)
FACE OF LOUVER: FULL WIDTH SILL WITH HEAD AND BLADES CONTAINED WITHIN JAMBS. BLADE IS 35°/42° ON APPROXIMATE 4 1/2" BLADE CENTERS.
SCREEN: (WHEN INDICATED, IN A REMOVABLE FRAME)
BIRD SCREEN - 1/2" FLATTENED ALUMINUM, .051" THK.
OR - 1/2" SQ. MESH INTERMEDIATE DOUBLE-CRIMPED ALUMINUM WIRE, .063" DIA.
OR - 18/16 MESH, .011" DIA. ALUMINUM WIRE INSECT SCREEN.

FINISH: _____
MINIMUM PANEL SIZE: 12" x 12"
MAXIMUM SINGLE PANEL SIZE: 60" x 96"

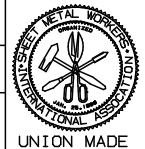
LOUVER PERFORMANCE STATEMENT

LOUVER MODEL EA-625-DD SHALL BE FABRICATED TO PROVIDE A MINIMUM OF (56%), 8.91 SQUARE FEET OF FREE AREA FOR A 48" x 48" SIZE LOUVER AND BEAR THE AMCA CERTIFIED RATINGS PROGRAM SEAL FOR AIR PERFORMANCE AND WATER PENETRATION. THE RATINGS SHALL SHOW A BEGINNING POINT OF WATER PENETRATION AT .01 OUNCES PER SQUARE FOOT OF FREE AREA TO BE ABOVE 1250 FPM, (11,138) CUBIC FEET PER MINUTE. WITH .12 INCHES WATER GAUGE PRESSURE DROP AT 1000 FPM AIR INTAKE.

FOR CERTIFIED RATINGS
AUTHORIZED BY AMCA
-SEE REVERSE SIDE

NONINAL DEDUCTIONS WILL BE MADE TO THE OPENING SIZE GIVEN.

ITEM	QTY.	WIDTH	HEIGHT	WIDTH	HEIGHT	MULL	TYPE	LOC	SCREENS	UNION MADE
		OPENING SIZE		LOUVER SIZE						



ARROW UNITED INDUSTRIES
A DIVISION OF MESTEK, INC.
450 RIVERSIDE DRIVE
WYALUSING, PA 18853
TEL: (570) 746-1888 FAX: (570) 746-9286
WEB ADDRESS: WWW.ARROWUNITED.COM

AGENT: _____

ARCH./ENG. :
CONTR. :
PROJECT :
EDR: _____ ECN: _____ JOB: _____
DATE: _____ DWN.: _____ DWG.: _____

LOUVER MODEL EA-625-DD

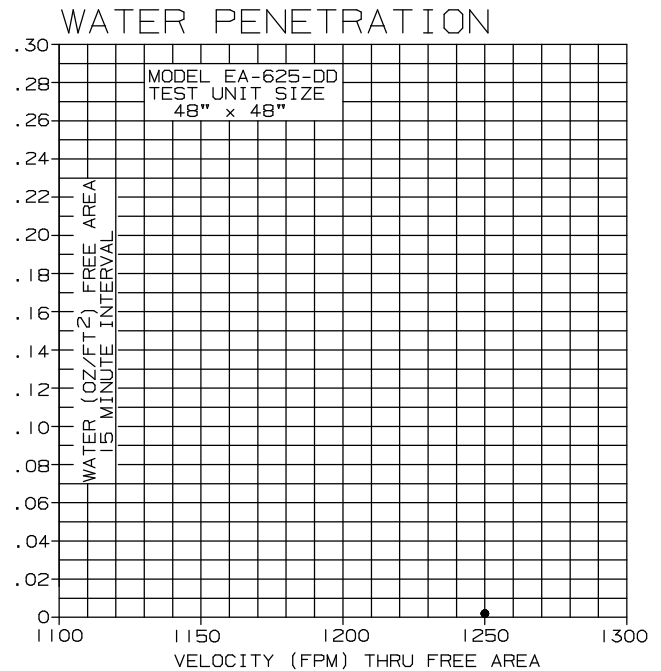
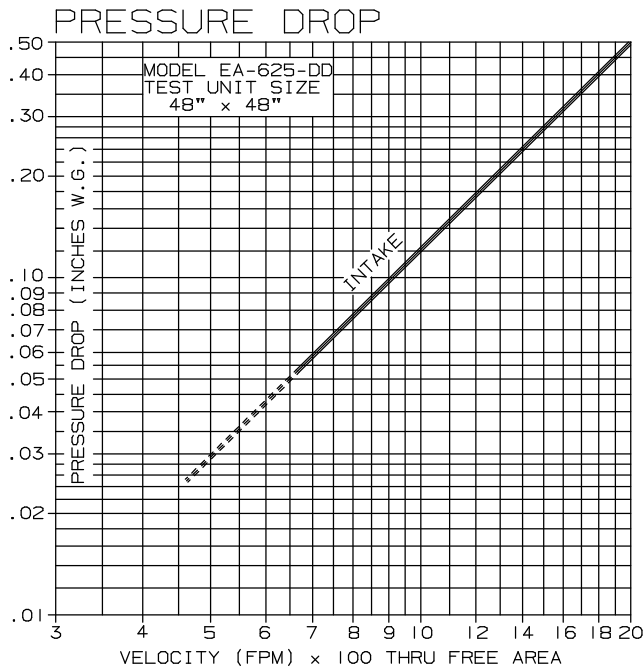
DRAIN LOUVERS

EXTRUDED ALUMINUM - STATIONARY

PERFORMANCE DATA

TESTS OF A 48" x 48" SAMPLE BY AN AMCA ACCREDITED LABORATORY ACCORDING TO AMCA STANDARD 500 SHOWS THE BEGINNING POINT OF WATER PENETRATION IS ABOVE 1250 FPM THROUGH THE FREE AREA OF THE LOUVER, WITH LESS THAN .12" W.G. PRESSURE DROP AT 950 FPM (INTAKE).

RATINGS DO NOT INCLUDE EFFECTS OF BIRDSCREEN.



*THE BEGINNING POINT OF WATER PENETRATION IS ABOVE 1250 FPM THROUGH THE FACE FREE AREA OF THE LOUVER.

*AMCA STANDARD 500 LIMITS TESTING OF WATER PENETRATION TO EITHER A MAXIMUM VELOCITY OF 1250 FPM OR 2.5 OUNCES OF WATER PER SQUARE FOOT OF LOUVER FREE AREA.



FREE AREA

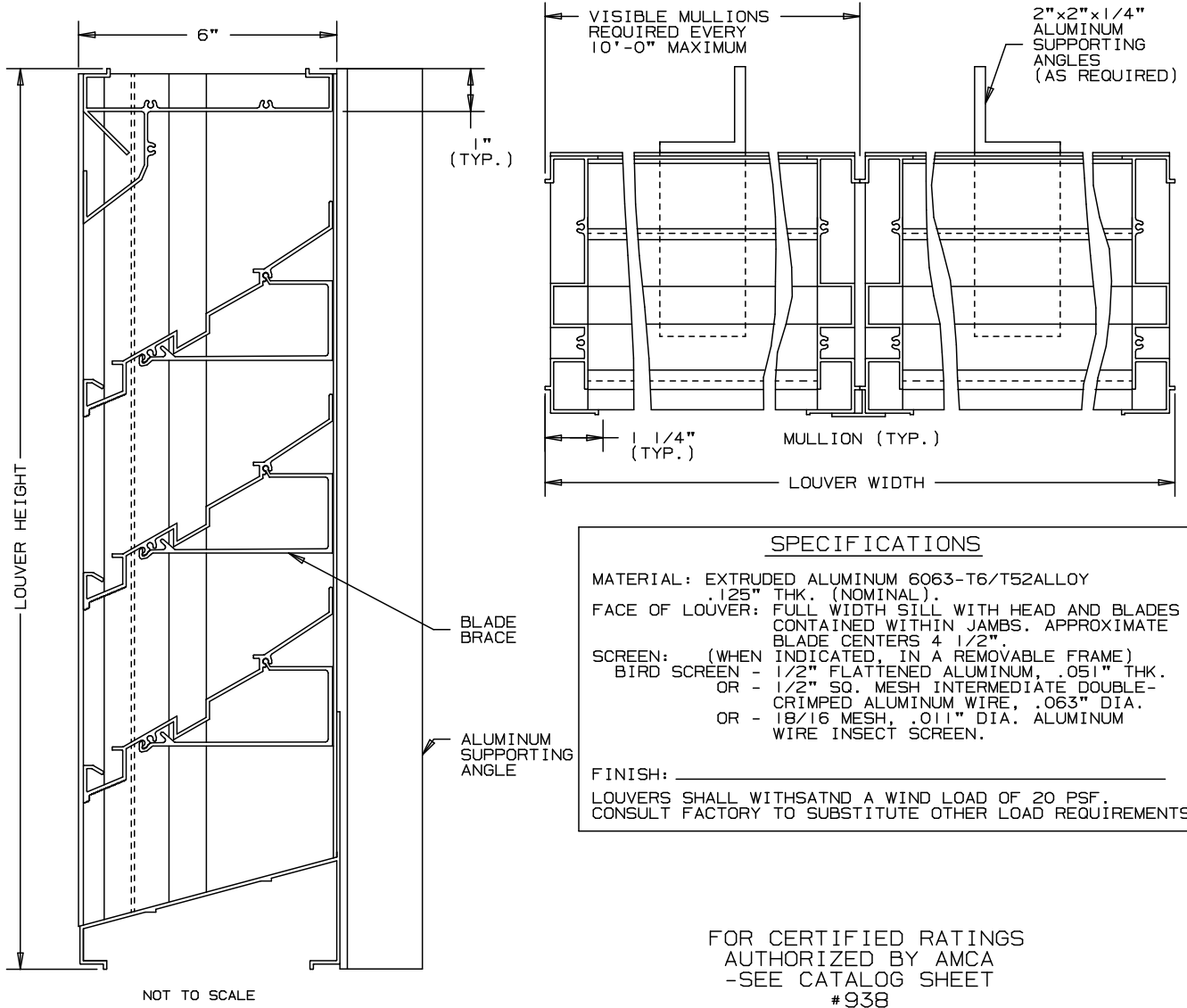
HEIGHT	FREE AREA (SQ. FT.)								
	WIDTH								
	12"	18"	24"	30"	36"	42"	48"	54"	60"
12"	.25	.41	.57	.72	.88	1.04	1.20	1.36	1.51
24"	.78	1.27	1.76	2.25	2.74	3.23	3.72	4.21	4.70
36"	1.29	2.11	2.92	3.74	4.55	5.37	6.18	7.00	7.81
48"	1.83	2.99	4.15	5.31	6.47	7.62	8.91	9.94	11.10
60"	2.36	3.85	5.34	6.83	8.32	9.81	11.30	12.79	14.28
72"	2.87	4.69	6.50	8.32	10.13	11.95	13.76	15.58	17.39
84"	3.42	5.57	7.73	9.89	12.05	14.21	16.36	18.52	20.68
96"	3.94	6.43	8.92	11.41	13.90	16.39	18.88	21.37	23.86

ARROW UNITED CERTIFIES THAT THE MODEL EA-625-DD LOUVERS SHOWN HEREIN ARE LICENSED TO BEAR THE AMCA SEAL. THE RATINGS SHOWN ARE BASED ON TESTS MADE IN ACCORDANCE WITH THE AMCA STANDARD 500 CERTIFIED RATINGS PROGRAM. THE CERTIFIED RATINGS SEAL APPLIES TO AIR PERFORMANCE AND WATER PENETRATION RATINGS.

* AMCA ACCREDITED LABORATORY IS A LABORATORY EQUIPPED AND STAFFED TO CONDUCT TESTS ACCORDING TO THE APPROPRIATE AMCA TEST METHOD AND WHICH HAS BEEN LICENSED AS A AMCA ACCREDITED LABORATORY.

ARROW TYPE EXTRUDED ALUMINUM LOUVERS EA-625-DD CONTINUOUS LINE

DRAIN BLADE-STATIONARY-CHANNEL TYPE



SPECIFICATIONS

MATERIAL: EXTRUDED ALUMINUM 6063-T6/T52ALLOY
 .125" THK. (NOMINAL).
 FACE OF LOUVER: FULL WIDTH SILL WITH HEAD AND BLADES
 CONTAINED WITHIN JAMBS. APPROXIMATE
 BLADE CENTERS 4 1/2".
 SCREEN: (WHEN INDICATED, IN A REMOVABLE FRAME)
 BIRD SCREEN - 1/2" FLATTENED ALUMINUM, .051" THK.
 OR - 1/2" SQ. MESH INTERMEDIATE DOUBLE-
 CRIMPED ALUMINUM WIRE, .063" DIA.
 OR - 18/16 MESH, .011" DIA. ALUMINUM
 WIRE INSECT SCREEN.

FINISH: _____

LOUVERS SHALL WITHSATND A WIND LOAD OF 20 PSF.
 CONSULT FACTORY TO SUBSTITUTE OTHER LOAD REQUIREMENTS.

FOR CERTIFIED RATINGS
 AUTHORIZED BY AMCA
 -SEE CATALOG SHEET
 #938

NOMINAL DEDUCTIONS WILL BE MADE TO THE OPENING SIZE GIVEN.

ITEM	QTY.	WIDTH	HEIGHT	WIDTH	HEIGHT	MULL	TYPE	LOC
		OPENING SIZE		LOUVER SIZE				



ARROW UNITED INDUSTRIES
 A DIVISION OF MESTEK, INC.
 450 RIVERSIDE DRIVE
 WYALUSING, PA 18853
 TEL: (570) 746-1888 FAX: (570) 746-9286
 WEB ADDRESS: WWW.ARROWUNITED.COM

AGENT: _____

ARCH./ENG. : _____
 CONTR. : _____
 PROJECT: _____
 EDR: _____ ECN: _____ JOB: _____
 DATE: _____ DWN. : _____ DWG. : _____