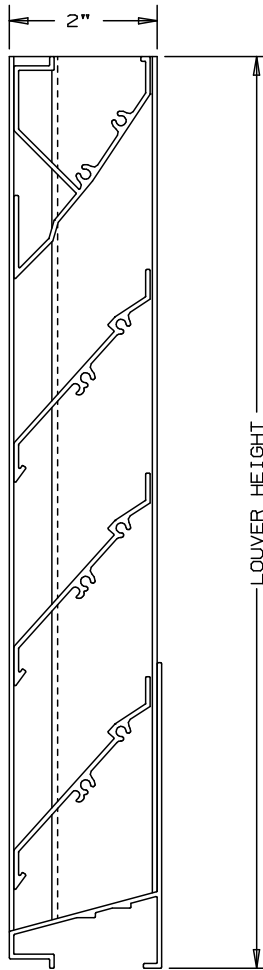


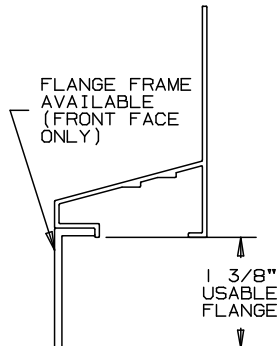
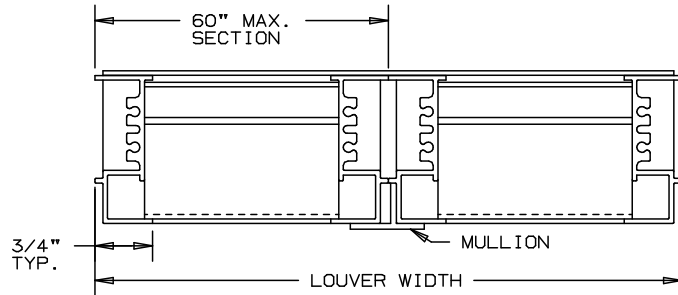
# ARROW EXTRUDED ALUMINUM LOUVERS 2" DEEP

# TYPE EA-200

## CURTAIN WALL LOUVERS 45° BAFFLE BLADE-STATIONARY-MODIFIED FLANGE FRAME



NOT TO SCALE



FLANGE FRAME OPTION

### SPECIFICATIONS

MATERIAL: EXTRUDED ALUMINUM 6063-T6/T52 ALLOY,  
FRAME - .063" THK., BLADES - .063" THK.

FACE OF LOUVER: FULL SILL, WITH BLADES, AND HEAD CONTAINED IN JAMBS. APPROXIMATE BLADE CENTERS 2 3/4".

SCREEN: (WHEN INDICATED)  
BIRD SCREEN - 1/2" FLATTENED ALUMINUM, .051" THK.  
OR - 1/2" SQ. MESH INTERMEDIATE DOUBLE-CRIMPED ALUMINUM WIRE, .063" DIA.  
OR - 18/16 MESH, .011" DIA. ALUMINUM WIRE INSECT SCREEN.

FINISH: \_\_\_\_\_

### LOUVER PERFORMANCE STATEMENT

LOUVER MODEL EA-200 SHALL BE FABRICATED TO PROVIDE A MINIMUM OF (45%), 7.23 SQUARE FEET OF FREE AREA FOR A 48" x 48" SIZE LOUVER AND BEAR THE AMCA CERTIFIED RATINGS PROGRAM SEAL FOR AIR PERFORMANCE AND WATER PENETRATION. THE RATING SHALL SHOW A BEGINNING POINT OF WATER PENETRATION AT .01 OUNCES PER SQUARE FOOT OF FREE AREA AT A FREE AREA VELOCITY OF 748 FEET PER MINUTE, (5408) CUBIC FEET PER MINUTE. WITH .085 INCHES WATER GAUGE PRESSURE DROP FOR AIR INTAKE.

FOR CERTIFIED RATINGS  
AUTHORIZED BY AMCA  
-SEE REVERSE SIDE

NOMINAL DEDUCTIONS WILL BE MADE TO OPENING SIZES GIVEN.

ITEM	QTY.	WIDTH	HEIGHT	WIDTH	HEIGHT	MULL	TYPE	LOC	SCREENS	UNION MADE
		OPENING SIZE		LOUVER SIZE						



**ARROW UNITED INDUSTRIES**  
A DIVISION OF MESTEK, INC.  
450 RIVERSIDE DRIVE  
WYALUSING, PA 18853  
TEL: (570)746-1888 FAX: (570)746-9286  
WEB ADDRESS: WWW.ARROWUNITED.COM

AGENT: \_\_\_\_\_

ARCH./ENG. : \_\_\_\_\_  
CONTR. : \_\_\_\_\_  
PROJECT : \_\_\_\_\_  
EDR : \_\_\_\_\_ ECN : \_\_\_\_\_ JOB : \_\_\_\_\_  
DATE : \_\_\_\_\_ DWN. : \_\_\_\_\_ DWG. : \_\_\_\_\_

# LOUVER MODEL EA-200

## 45° BAFFLE BLADE

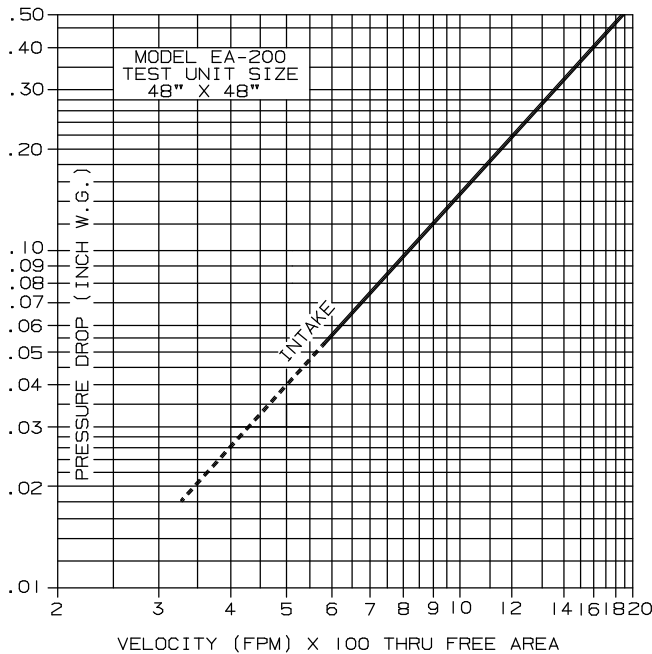
### EXTRUDED ALUMINUM - STATIONARY

## PERFORMANCE DATA

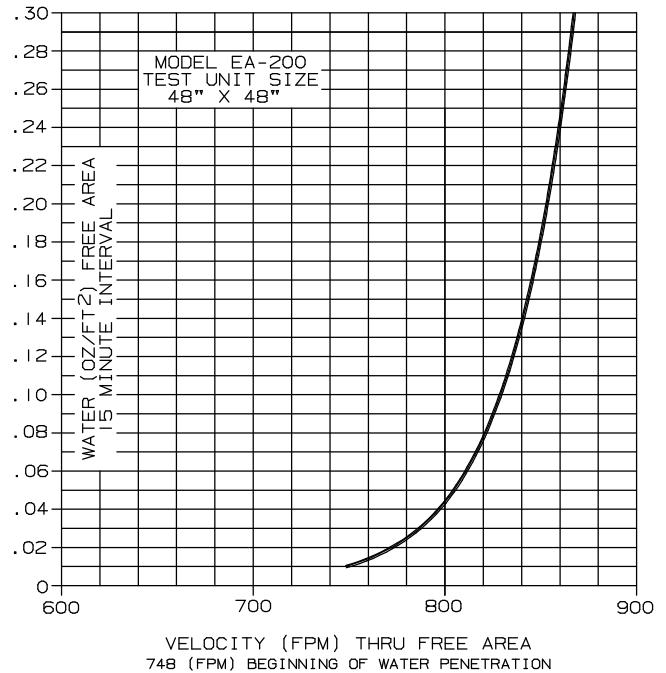
TESTS OF A 48" X 48" SAMPLE ACCORDING TO AMCA STANDARD 500-L SHOWS  
LESS THAN .02 OZ. PER SQ. FT. WATER PENETRATION AT 750 FPM  
(FREE AREA VELOCITY) WITH LESS THAN .09" W.G. PRESSURE DROP (INTAKE).

RATINGS DO NOT INCLUDE THE EFFECT OF BIRDSCREEN.

### PRESSURE DROP



### WATER PENETRATION



### FREE AREA

HEIGHT	FREE AREA (SQ. FT.)								
	WIDTH								
	12"	18"	24"	30"	36"	42"	48"	54"	60"
12"	.28	.44	.60	.76	.92	1.08	1.24	1.40	1.56
24"	.78	1.23	1.69	2.14	2.59	3.04	3.49	3.94	4.39
36"	1.19	1.87	2.55	3.23	3.91	4.60	5.28	5.96	6.64
48"	1.63	2.56	3.50	4.43	5.37	6.30	7.23	8.17	9.11
60"	2.05	3.23	4.41	5.59	6.77	7.95	9.14	10.32	11.50
72"	2.45	3.86	5.27	6.68	8.09	9.50	10.91	12.32	13.73
84"	2.94	4.63	6.32	8.01	9.70	11.39	13.08	14.77	16.46
96"	3.36	5.29	7.22	9.15	11.08	13.00	14.93	16.86	18.79



ARROW UNITED CERTIFIES THAT THE MODEL EA-200 SHOWN HEREIN IS LICENSED TO BEAR THE AMCA SEAL. THE RATINGS SHOWN ARE BASED ON TESTS AND PROCEDURES PERFORMED IN ACCORDANCE WITH THE AMCA PUBLICATION 511 AND COMPLY WITH THE REQUIREMENTS OF THE AMCA CERTIFIED RATINGS PROGRAM. THE AMCA CERTIFIED RATINGS SEAL APPLIES TO AIR PERFORMANCE RATINGS AND WATER PENETRATION RATINGS.