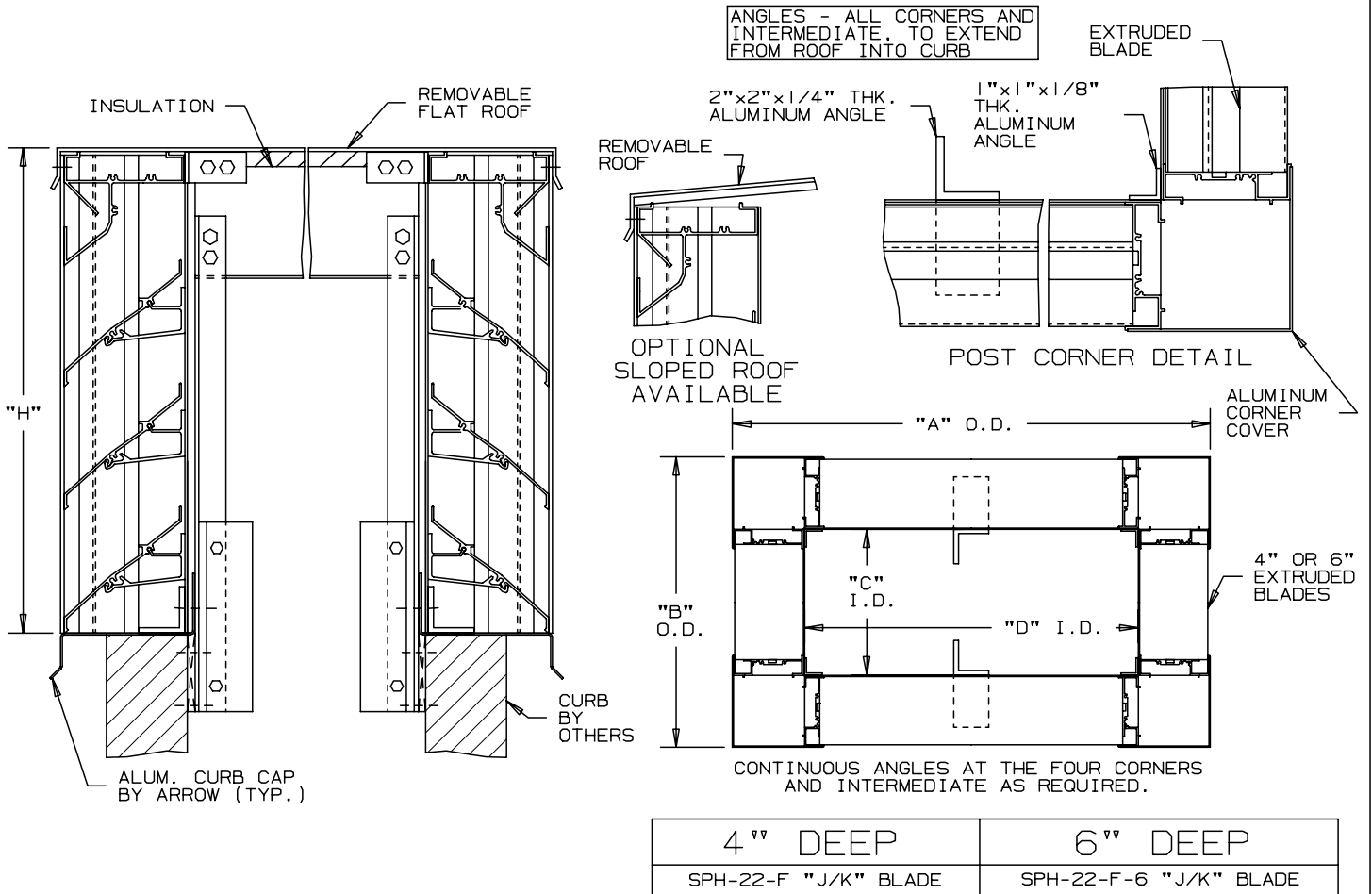


ARROW

LOUVERED PENTHOUSES EXTRUDED ALUMINUM 4" AND 6" DEEP BLADES

INTERIOR FASTENING INSTALLATION POST CORNER - "J/K" BLADE - STATIONARY



SPECIFICATIONS


MATERIAL: EXTRUDED ALUMINUM SECTIONS OF () .081", () .125" THICKNESS OF 6063-T52/T6 ALLOY. WITH REINFORCING RIB BOSSES.

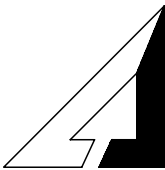
ROOF: REMOVABLE ROOF .060" THK. SHEET ALUMINUM REINFORCED WITH ALUMINUM BRACING WHERE REQUIRED TO TAKE A SNOW LOAD OF 40 LBS./SQ.FT. PLUS A REQUIRED SAFETY FACTOR.

INSULATION: UNDERSIDE OF ROOF IS LINED WITH 1/2" THK. INSULATION.

SCREENS: (WHEN INDICATED)
BIRD SCREEN - 1/2" SQUARE MESH, 19 GA. GALVANIZED STEEL, ON INTERIOR.

NOTE: PENTHOUSE DIMENSIONS "A" OR "B" EXCEEDING 84" SHALL BE SHIPPED IN SECTIONS FOR FIELD ASSEMBLY BY OTHERS.

ITEM	QTY.	"A"	"B"	"C"	"D"	"H"	MULL	TYPE	LOC	SCREENS	 UNION MADE


ARROW UNITED INDUSTRIES
 A DIVISION OF MESTEK, INC.
 450 RIVERSIDE DRIVE
 WYALUSING, PA 18853
 TEL: (570) 746-1888 FAX: (570) 746-9286
 WEB ADDRESS: WWW.ARROWUNITED.COM

ARCH./ENG. : _____

CONTR. : _____

PROJECT: _____

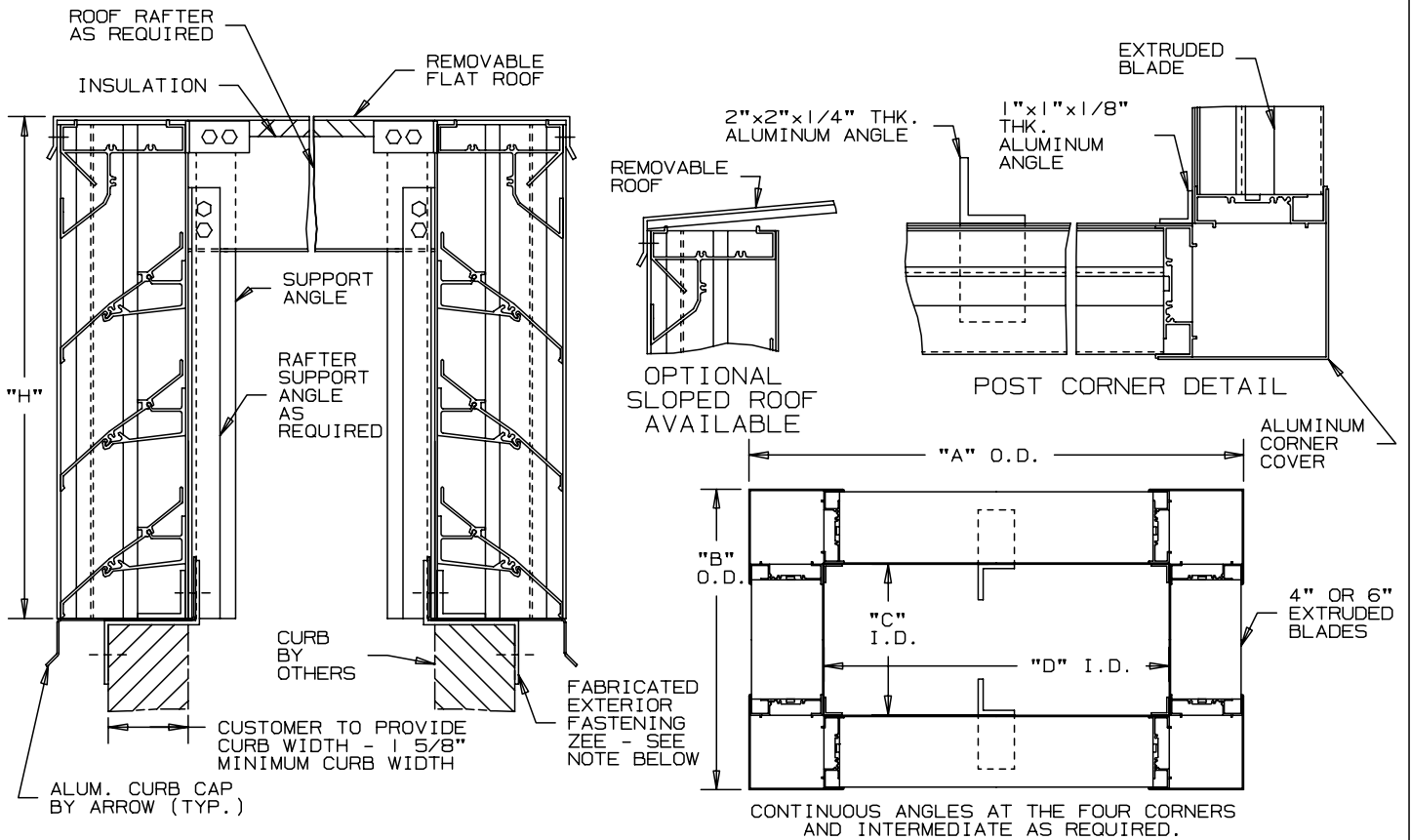
EDR: _____ ECN: _____ JOB: _____

DATE: _____ DWN. : _____ DWG. : _____

ARROW

LOUVERED PENTHOUSES EXTRUDED ALUMINUM 4" AND 6" DEEP BLADES

EXTERIOR FASTENING INSTALLATION POST CORNER - "J/K" BLADE - STATIONARY



*NOTE:
EXTERIOR MOUNTING ZEE CLIPS SUPPLIED 2"
LONG, SPACED NO MORE THAN 4" FROM EACH
CORNER AND 12" O.C. MAXIMUM.

4" DEEP	6" DEEP
SPH-22-F "J/K" BLADE	SPH-22-F-6 "J/K" BLADE

SPECIFICATIONS

MATERIAL: EXTRUDED ALUMINUM SECTIONS OF () .081", () .125" THICKNESS OF 6063-T52/T6 ALLOY. WITH REINFORCING RIB BOSSÉS.
 ROOF: REMOVABLE ROOF .060" THK. SHEET ALUMINUM REINFORCED WITH ALUMINUM BRACING WHERE REQUIRED TO TAKE A SNOW LOAD OF 40 LBS./SQ.FT. PLUS A REQUIRED SAFETY FACTOR.
 INSULATION: UNDERSIDE OF ROOF IS LINED WITH 1/2" THK. INSULATION.
 SCREENS: (WHEN INDICATED)
 BIRD SCREEN - 1/2" SQUARE MESH, 19 GA. GALVANIZED STEEL, ON INTERIOR.
 NOTE: PENTHOUSE DIMENSIONS "A" OR "B" EXCEEDING 84" SHALL BE SHIPPED IN SECTIONS FOR FIELD ASSEMBLY BY OTHERS.

ITEM	QTY.	"A"	"B"	"C"	"D"	"H"	MULL	SCREENS		CURB WIDTH	UNION MADE
								TYPE	LOC		

ARROW UNITED INDUSTRIES
 A DIVISION OF MESTEK, INC.
 450 RIVERSIDE DRIVE
 WYALUSING, PA 18853
 TEL: (570) 746-1888 FAX: (570) 746-9286
 WEB ADDRESS: WWW.ARROWUNITED.COM

AGENT: _____

ARCH./ENG. :
CONTR. :
PROJECT :
EDR: _____ ECN: _____ JOB: _____
DATE: _____ DWN. : _____ DWG. : _____