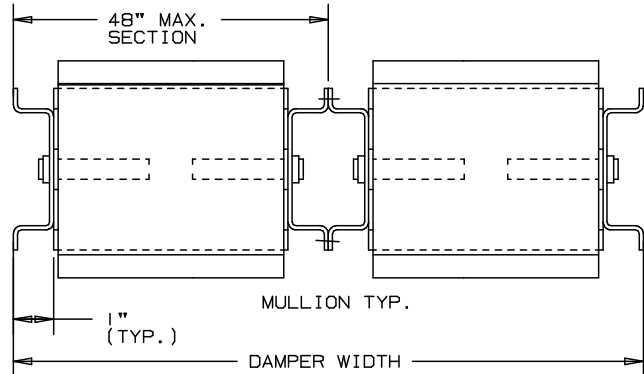
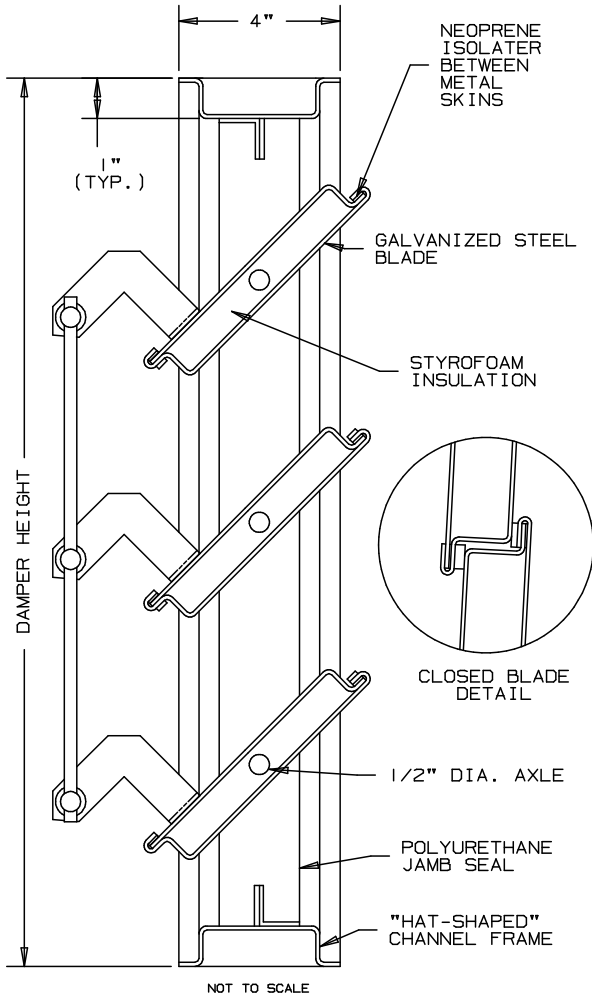


ARROW INSULATED DAMPER 4" DEEP

MODEL ID-200

PARALLEL BLADES ONLY



SPECIFICATIONS

- FRAME: 4" WIDE, 16 GA. GALVANIZED STEEL "HAT-SHAPED" CHANNEL PROVIDES GREATER STRENGTH AND RIGIDITY.
- BLADE: 18 GA. GALVANIZED STEEL "DOUBLE-THICKNESS" 1" THICK WITH STYROFOAM INSULATION SANDWICHED BETWEEN METAL SKINS, MECHANICALLY FASTENED TOGETHER. ON 6" C-C STANDARD SPACING.
- AXLES: 1/2" DIAMETER CADMIUM PLATED STEEL STUB.
- BEARINGS: OILITE BRONZE.
- LINKAGE: PIVOTS ARE .050" DIAMETER STEEL, CADMIUM PLATED AND CHROMATE TREATED. A 1/4-20 SET SCREWS WITH LOCKING PATCH LOCKS THE PIVOTS TO A .312" DIAMETER ALUMINUM ROD. PIVOTS ROTATE IN A CELCON BEARING. BLADE LINKAGES ARE INDIVIDUALLY FACTORY ADJUSTED FOR MAXIMUM SHUTOFF.
- SEALS: BLADE AND JAMB OF POLYURETHANE.
- DRIVESHAFT: 1/2" DIAMETER CADMIUM PLATED STEEL, PERMANENTLY EXTENDED 6" BEYOND FRAME FOR EXTERNAL DRIVE. FOR INTERNAL DRIVE A BLADE CLIP WILL BE PROVIDED. PLEASE SPECIFY LOCATION OF DRIVE REQUIRED.
- SIZES: MADE TO EXACT SIZE REQUIRED.
MAXIMUM PANEL SIZE: 48" x 72"
MINIMUM PANEL SIZE: 10" x 8 1/2"
- FINISH: MILL.

INSULATING FACTORS FOR ABOVE CONSTRUCTION

R-VALUE = 4
U-FACTOR, .25 BTU PER HOUR PER SQUARE FOOT PER DEGREE ° F

THE ABOVE VALUES ARE BASED ON CALCULATIONS CONSIDERING THE FACE AREA OF THE DAMPER ONLY. THIS DOES NOT INCLUDE FRAMES. INSULATION OF DAMPER FRAME SHALL BE BY OTHERS.

OPTIONAL

- A: FLANGED FRAMES
- B: WIDER FRAMES, WIDER THAN 4"
- C: FRAMES AND BLADES OF OTHER GAUGES AND MATERIALS
- D: FINISHES: ENAMELS, EPOXIES, ETC.
- E: SEALS: STAINLESS STEEL FOR JAMBS ONLY

DAMPERS WILL BE FABRICATED 1/4" SMALLER THAN OPENING SIZE UNLESS OTHERWISE SPECIFIED.

ITEM	QTY.	OPENING SIZE		DAMPER SIZE		MULL	UNION MADE
		WIDTH	HEIGHT	WIDTH	HEIGHT		
							

ARROW UNITED INDUSTRIES
A DIVISION OF MESTEK, INC.
450 RIVERSIDE DRIVE
WYALUSING, PA 18853
TEL: (570) 746-1888 FAX: (570) 746-9286
WEB ADDRESS: WWW.ARROWUNITED.COM

AGENT: _____

ARCH./ENG.:
CONTR.:
PROJECT:
EDR: ECN: JOB:
DATE: DWN.: DWG.: