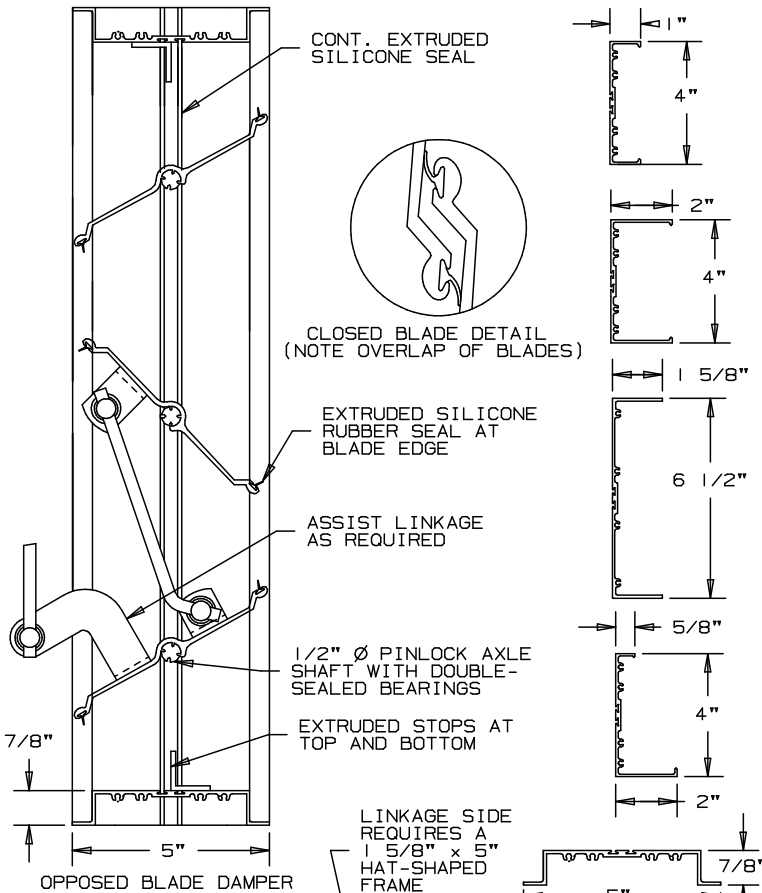


ARROW EXTRUDED ALUMINUM PIN-LOCK DAMPERS

TYPE PBDPL-506 & OBDPL-507

PIN-LOCK DAMPERS WITH JAMB LINKAGE



SPECIFICATIONS

DAMPERS SHALL BE PIN-LOCK DAMPER OBDPL-507 (OPPOSED) OR PBDPL-506 (PARALLEL) WITH JAMB LINKAGE AS MANUFACTURED BY ARROW UNITED INDUSTRIES, WYALUSING, PA 18853.

FRAMES TO BE A MINIMUM 12 GA (.081") EXTRUDED ALUMINUM. BLADES TO BE A MINIMUM .125" THK. EXTRUDED ALUMINUM. BLADES TO BE A SINGLE UNIT PIN-LOCK DESIGN, 6" WIDE, WITH THE PIN-LOCK AN INTEGRAL SECTION WITHIN THE BLADE CORE.

OVERLAP BLADES AND SEALS (NOT JUST OVERLAP SEALS) ASSURE MINIMUM AIR LEAKAGE. EXTRUDED SILICONE SEALS FIT INTO DOVETAIL SHAPED SLOTS ON BOTH FRAMES AND BLADES.

FRAMES TO BE EXTRUDED ALUMINUM "HAT-SHAPED" CHANNEL WITH REINFORCING BOSSES AND GROOVE INSERTS FOR SILICONE SEALS. STANDARD FRAMES ARE 5" WIDE "HAT-SHAPED" CHANNELS ON (4) SIDES.

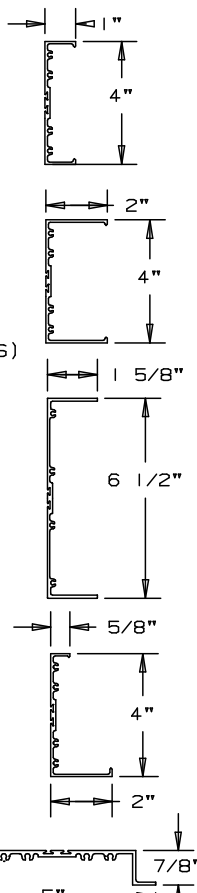
AXLE SHAFTS TO BE 1/2" DIA. EXTRUDED ALUMINUM, PIN-LOCK DESIGN INTERLOCKING INTO BLADE SECTION. BEARINGS TO BE "DOUBLE-SEALED" TYPE WITH CELCON INNER BEARING ON AXLE RIDING IN POLYCARBONATE OUTER BEARING INSERTED IN FRAME SO THAT OUTER BEARING CANNOT ROTATE.

AXLE BEARINGS TO BE DESIGNED SO THAT THERE SHALL BE NO METAL-TO-METAL OR METAL-TO-BEARING RIDING SURFACES. INTERCONNECTING LINKAGE TO HAVE A SEPRATE CELCON BEARING TO ELIMINATE FRICTION IN LINKAGE.

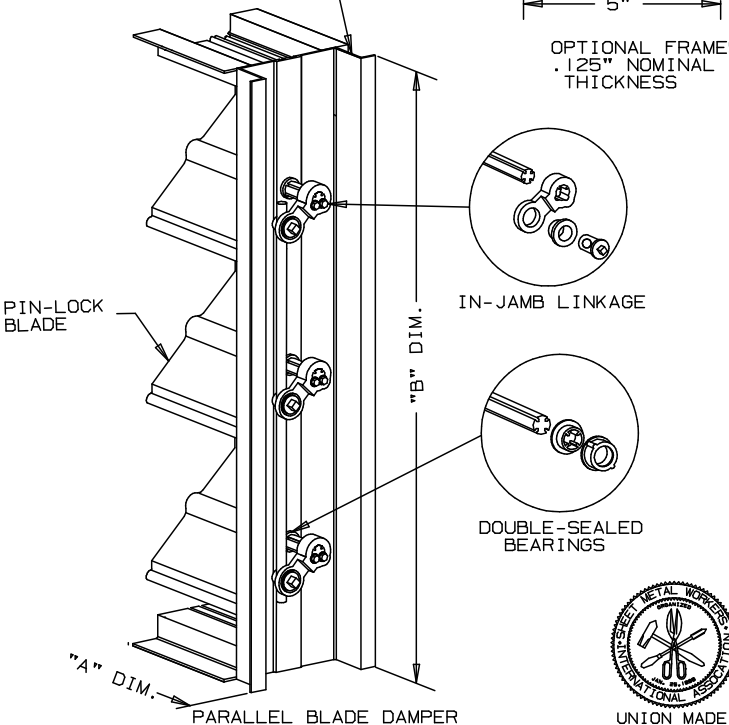
BLADE LINKAGE HARDWARE IS INSTALLED IN FRAME, OUT OF AIR-STREAM. INSTALLATION OF ASSIST LINKAGE SHALL BE DETERMINED BY THE FACTORY AND INSTALLED AS NECESSARY. ALL HARDWARE TO BE NON-CORROSIVE REINFORCED MATERIAL OR PLATED STEEL.

PLEASE SPECIFY WHETHER OPPOSED OR PARALLEL BLADE OPERATION IS REQUIRED.

NOMINAL DEDUCTIONS WILL BE MADE TO THE OPENING SIZE GIVEN.



FOR DAMPER PERFORMANCE
- SEE REVERSE SIDE



SCHEDULE

ITEM	QTY.	"A" DIM.	"B" DIM.

ARROW UNITED INDUSTRIES
A DIVISION OF MESTEK, INC.
450 RIVERSIDE DRIVE
WYALUSING, PA 18853
TEL: (570) 746-1888 FAX: (570) 746-9286
WEB ADDRESS: WWW.ARROWUNITED.COM

AGENT: _____

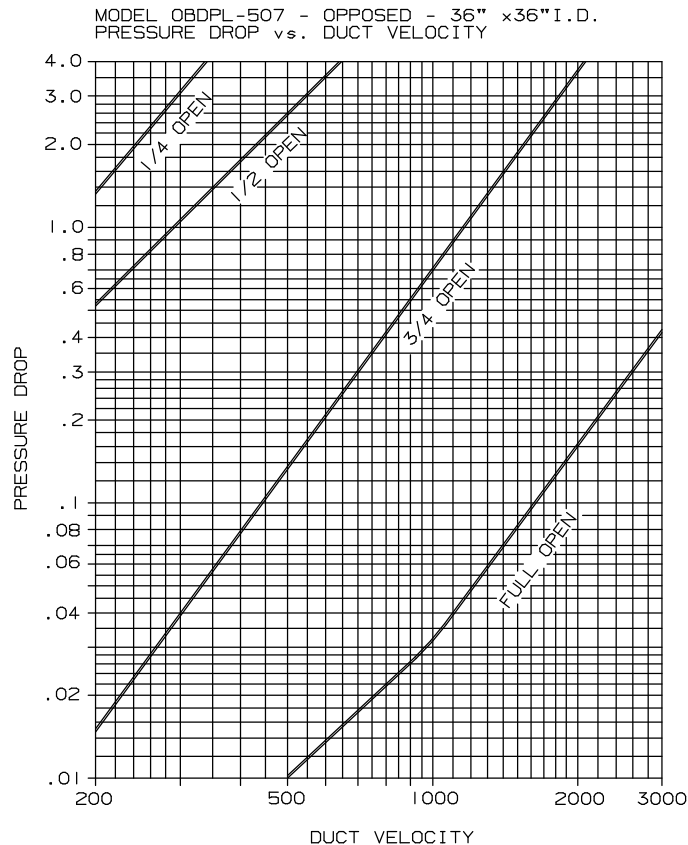
ARCH./ENG. :
CONTR. :
PROJECT :
EDR: ECN: JOB:
DATE: DWN. : DWG. :



DAMPER MODEL PINLOCK PBDPL-506 & OBDPL-507

PERFORMANCE DATA LOW AIR LEAKAGE, EFFICIENT PRESSURE DROP

PRESSURE DROP RATINGS ARE BASED ON AMCA STANDARD 500 USING TEST SET-UP 5.3 FOR DAMPER INSTALLED WITH DUCT UPSTREAM AND DOWNSTREAM. STATIC PRESSURES ARE CORRECTED TO .075 LB./CU. FT. AIR DENSITY.



AIR LEAKAGE RATINGS ARE BASED ON AMCA STANDARD 500 USING TEST SET-UP 5.4. THE TEST RESULTS INDICATE EXCEPTIONAL LOW LEAKAGE. DAMPER LEAKAGE PERFORMANCE MEETS SPECIFICATIONS REQUIRING LESS THAN 1/2% OF 1% FOR DAMPER RANGE OF SIZES.

MAXIMUM DAMPER WIDTH	MAXIMUM SYSTEM STATIC PRESSURE	MAXIMUM SYSTEM VELOCITY	AIR LEAKAGE CFM/SQ.FT.
48"	2.0" W.G.	2000 FPM	7.5 CFM/SF
36"	2.5" W.G.	2500 FPM	10.5 CFM/SF
24"	2.5" W.G.	2500 FPM	10.5 CFM/SF
12"	4.0" W.G.	3000 FPM	13.2 CFM/SF